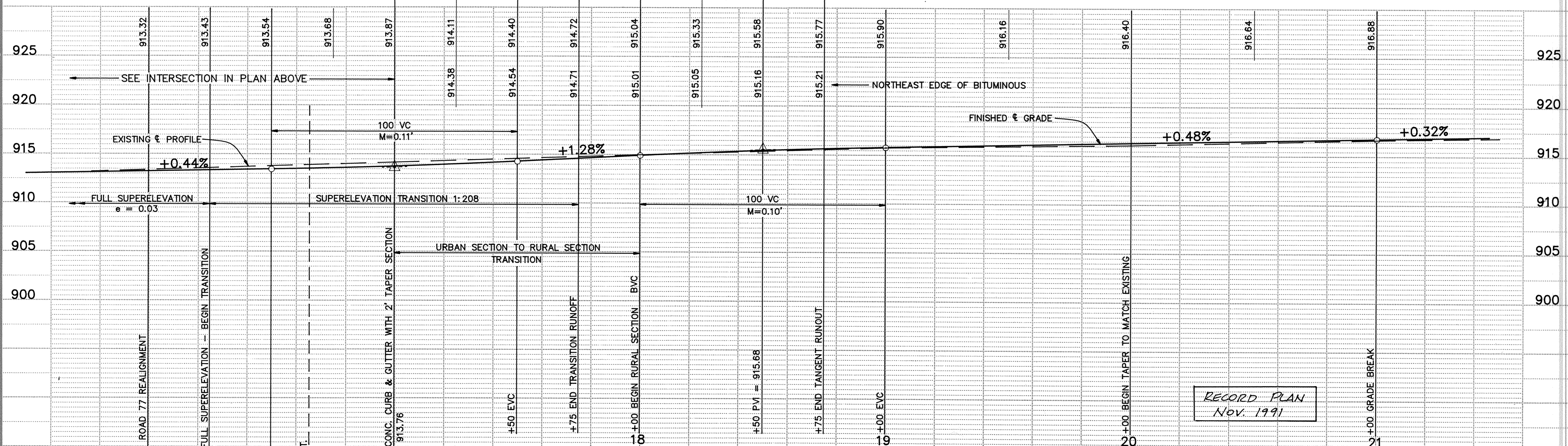
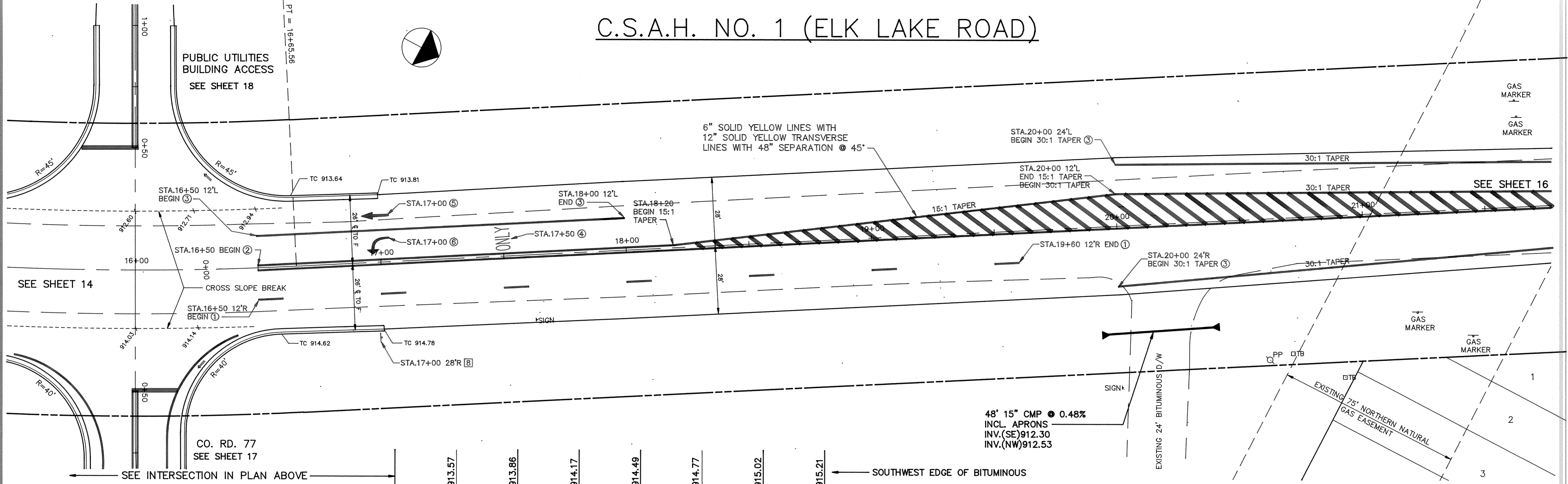


# C.S.A.H. NO. 1 (ELK LAKE ROAD)



I HEREBY CERTIFY THAT THIS PLAN, SPECIFICATION, OR REPORT WAS PREPARED BY ME OR UNDER MY DIRECT SUPERVISION AND THAT I AM A DULY REGISTERED PROFESSIONAL ENGINEER UNDER THE LAWS OF THE STATE OF MINNESOTA.

*Terry J. Maun*  
 DATE 4/4/91 REG. NO. 15314

**MSA** CONSULTING ENGINEERS  
**Maier Stewart & Associates Inc.**  
 1959 SLOAN PLACE (612)774-6021 ST. PAUL, MINNESOTA 55117

DATE	DESCRIPTION	DESIGNED	GC
5/28/91	CO. RD. 77 ALIGNMENT	CHECKED	GG
		DRAWN	GG
		GRAPHIC SCALE	
		1" = 20'	
		1" = 5'	

**SHERBURNE COUNTY**  
**STREET IMPROVEMENTS**  
**C.S.A.H. NO. 1 (ELK LAKE ROAD)**  
**S.A.P. 71-601-13**

DATE FEB. 1991 SHEET 15 OF 28 SHEETS PROJECT NO. 231-001