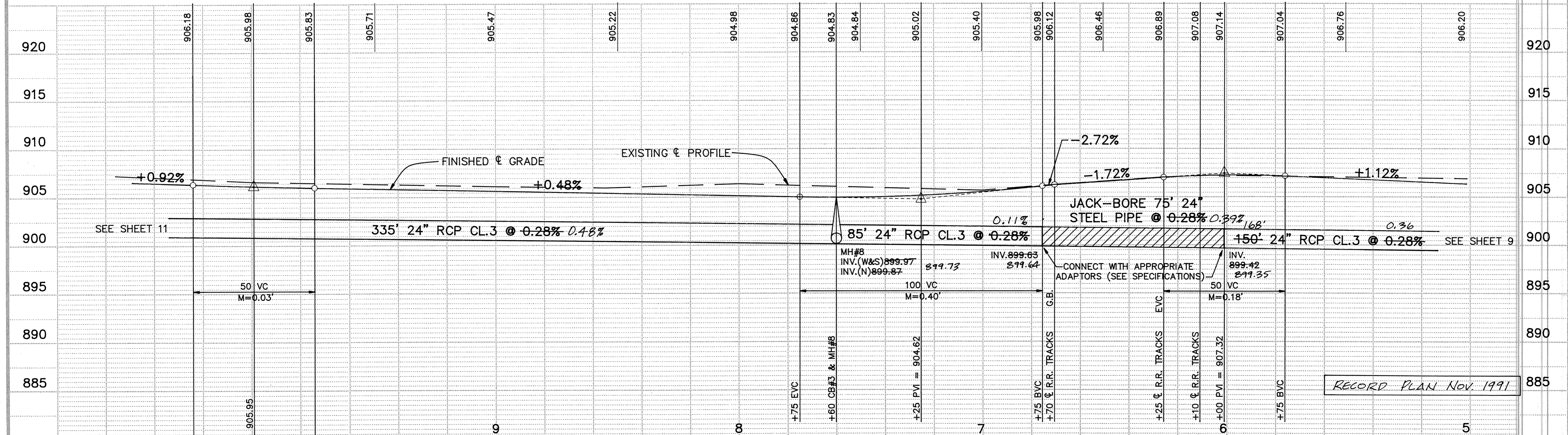
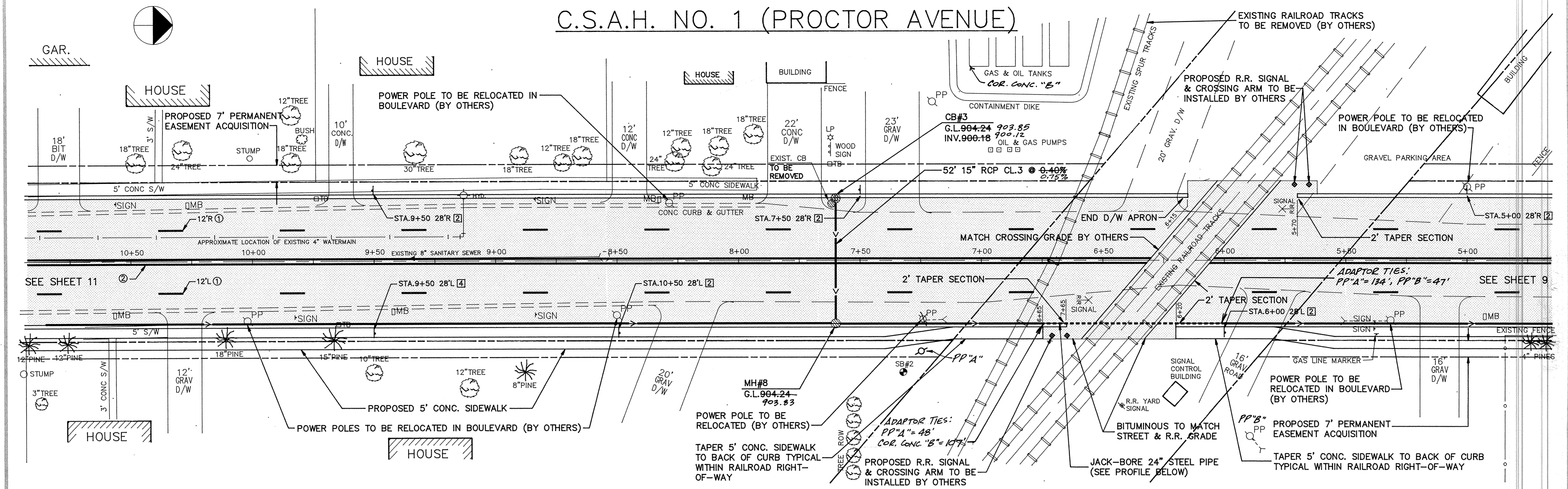


C.S.A.H. NO. 1 (PROCTOR AVENUE)



I HEREBY CERTIFY THAT THIS PLAN, SPECIFICATION, OR REPORT WAS PREPARED BY ME OR UNDER MY DIRECT SUPERVISION AND THAT I AM A DULY REGISTERED PROFESSIONAL ENGINEER UNDER THE LAWS OF THE STATE OF MINNESOTA.

Tony Maurer
 DATE 1/23/91 REG. NO. 15316

Maier Stewart & Associates Inc.
 CONSULTING ENGINEERS
 1959 SLOAN PLACE (612) 774-6021 ST. PAUL, MINNESOTA 55117

DATE	DESCRIPTION	DESIGNED_VGH
7/22/91	SIDEWALK IN R.R. R.O.W.	CHECKED JEJ DRAWN GG
REVISIONS		GRAPHIC SCALE HORIZ. 20' VERT. 5'

SHERBURNE COUNTY
 STREET IMPROVEMENTS
 C.S.A.H. NO. 1 (PROCTOR AVENUE)
 S.A.P. 71-601-13

DATE JAN. 1991 SHEET 10 OF 28 SHEETS PROJECT NO. 231-001