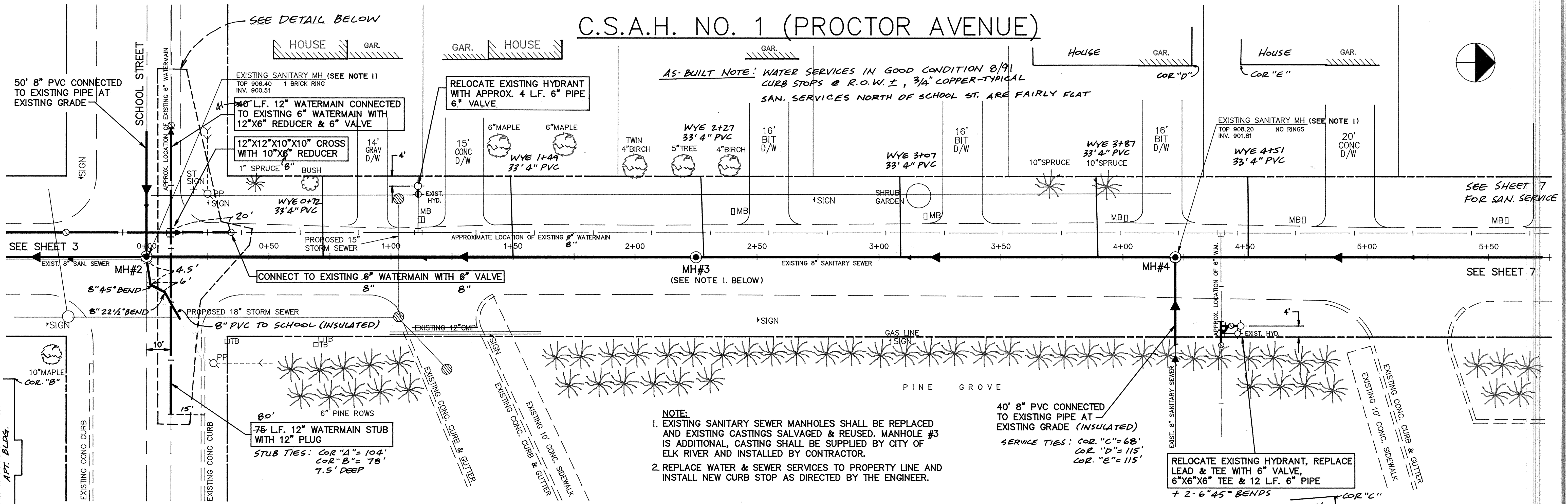
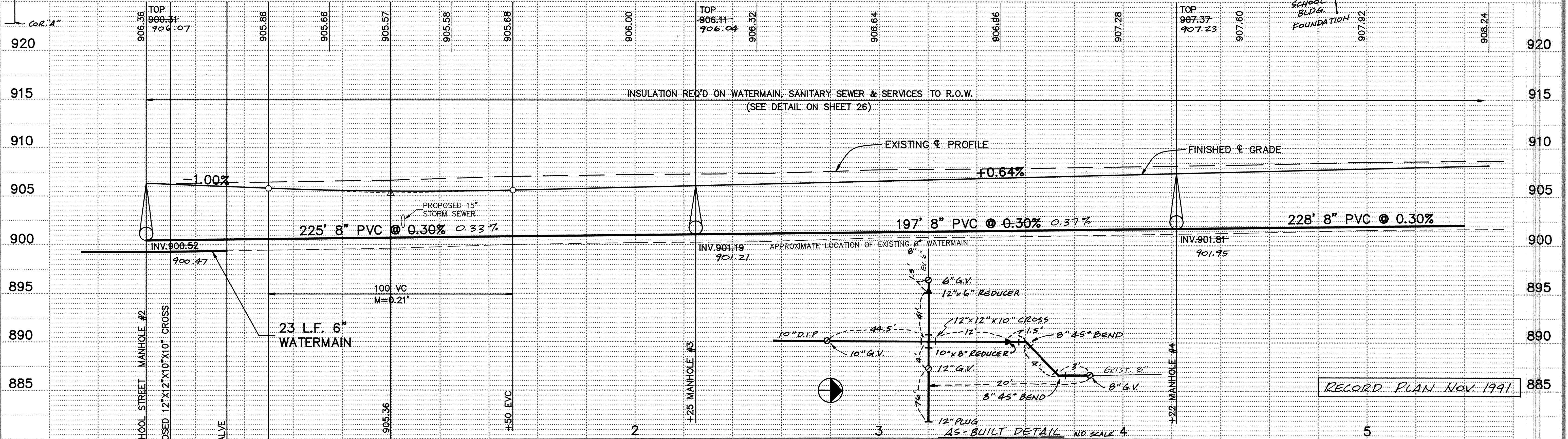


C.S.A.H. NO. 1 (PROCTOR AVENUE)

AS-BUILT NOTE: WATER SERVICES IN GOOD CONDITION 8/91
CURB STOPS @ R.O.W. ±, 3/4" COPPER-TYPICAL
SAN. SERVICES NORTH OF SCHOOL ST. ARE FAIRLY FLAT



- NOTE:**
- EXISTING SANITARY SEWER MANHOLES SHALL BE REPLACED AND EXISTING CASTINGS SALVAGED & REUSED. MANHOLE #3 IS ADDITIONAL, CASTING SHALL BE SUPPLIED BY CITY OF ELK RIVER AND INSTALLED BY CONTRACTOR.
 - REPLACE WATER & SEWER SERVICES TO PROPERTY LINE AND INSTALL NEW CURB STOP AS DIRECTED BY THE ENGINEER.



I HEREBY CERTIFY THAT THIS PLAN, SPECIFICATION OR REPORT WAS PREPARED BY ME OR UNDER MY DIRECT SUPERVISION AND THAT I AM A DULY REGISTERED PROFESSIONAL ENGINEER UNDER THE LAWS OF THE STATE OF MINNESOTA. <i>Larry J. Maier</i> DATE <u>3/15/91</u> REG. NO. <u>15316</u>		 CONSULTING ENGINEERS 1959 SLOAN PLACE (612)774-6021 ST. PAUL, MINNESOTA 55117		DESIGNED <u>VGH</u> CHECKED <u>GG</u> DRAWN <u>GG</u> GRAPHIC SCALE HORIZ. 20' VERT. 5'	SHERBURNE COUNTY SANITARY SEWER & WATERMAIN IMPROVEMENTS C.S.A.H. NO. 1 (PROCTOR AVENUE) S.A.P. 71-601-13 DATE <u>JAN. 1991</u> SHEET <u>6</u> OF <u>28</u> SHEETS PROJECT NO. <u>231-001</u>
--	--	--	--	--	---