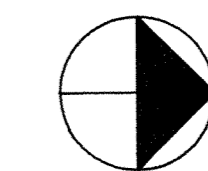
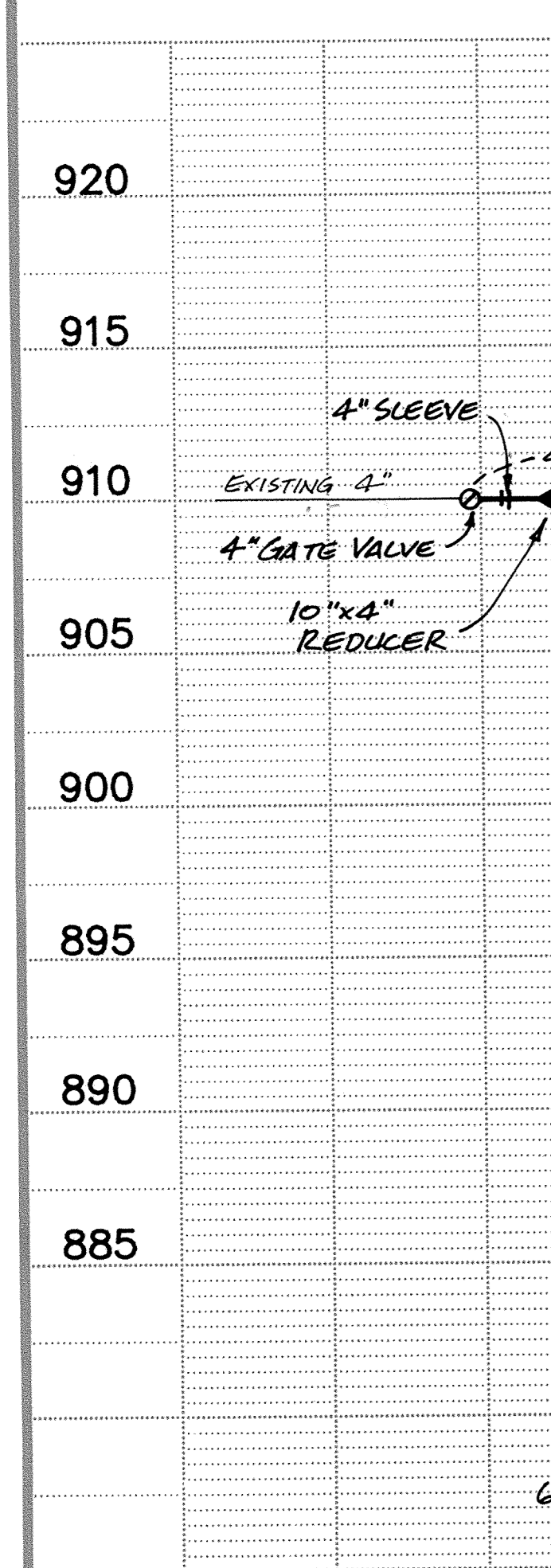
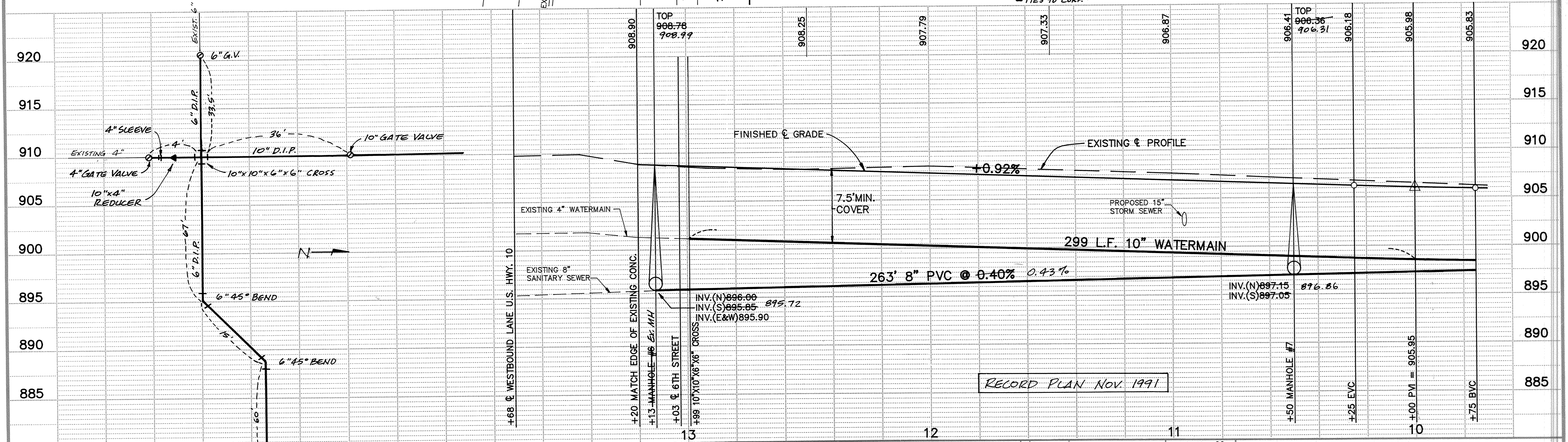


C.S.A.H. NO. 1 (PROCTOR AVENUE)



NOTE:
EXISTING SANITARY SEWER MANHOLES SHALL BE REPLACED AND EXISTING CASTINGS SALVAGED & REUSED. MANHOLE #7 IS ADDITIONAL, CASTING SHALL BE SUPPLIED BY CITY OF ELK RIVER AND INSTALLED BY CONTRACTOR.

NOTE: REPLACE WATER & SEWER SERVICES TO PROPERTY LINE AND INSTALL NEW CURB STOP AS DIRECTED BY THE ENGINEER.



I HEREBY CERTIFY THAT THIS PLAN, SPECIFICATION, OR REPORT WAS PREPARED BY ME OR UNDER MY DIRECT SUPERVISION AND THAT I AM A DULY REGISTERED PROFESSIONAL ENGINEER UNDER THE LAWS OF THE STATE OF MINNESOTA.
Terry J. Maier
DATE 3/15/91 REG. NO. 15314

Maier Stewart & Associates Inc.
CONSULTING ENGINEERS
1959 SLOAN PLACE (612) 774-6021 ST. PAUL, MINNESOTA 55117

DATE	DESCRIPTION	DESIGNED	CHECKED	DRAWN
		GG	GG	GG

GRAPHIC SCALE
HORIZ. 20
VERT. 5

SHERBURNE COUNTY
STREET IMPROVEMENTS
C.S.A.H. NO. 1 (PROCTOR AVENUE)
S.A.P. 71-601-13
SANITARY SEWER AND WATER MAIN
DATE JAN. 1991 SHEET 5 OF 28 SHEETS PROJECT NO. 231-001