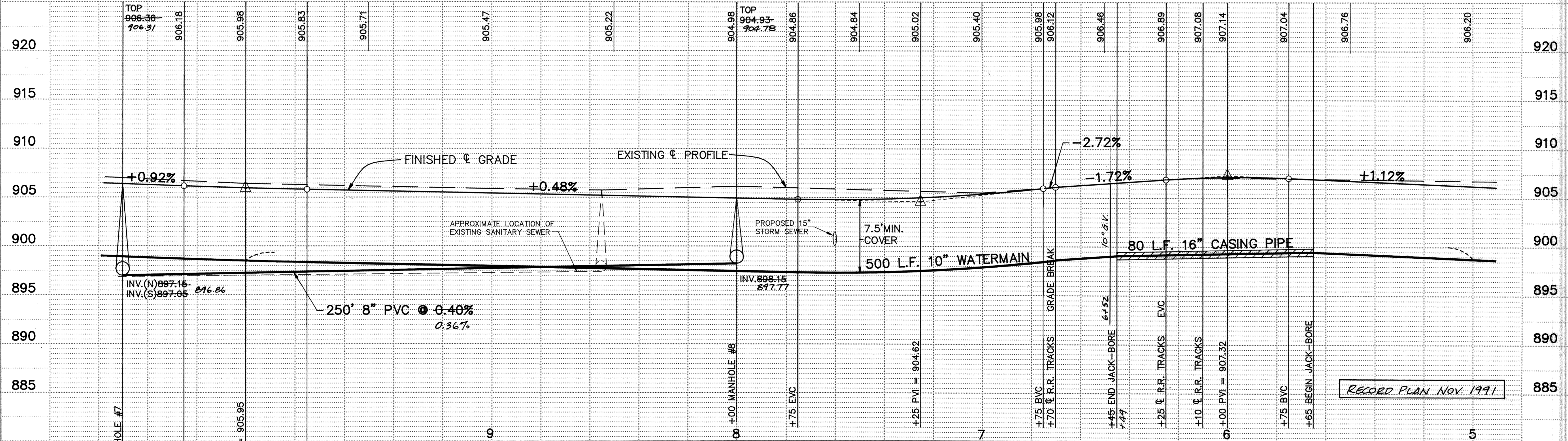
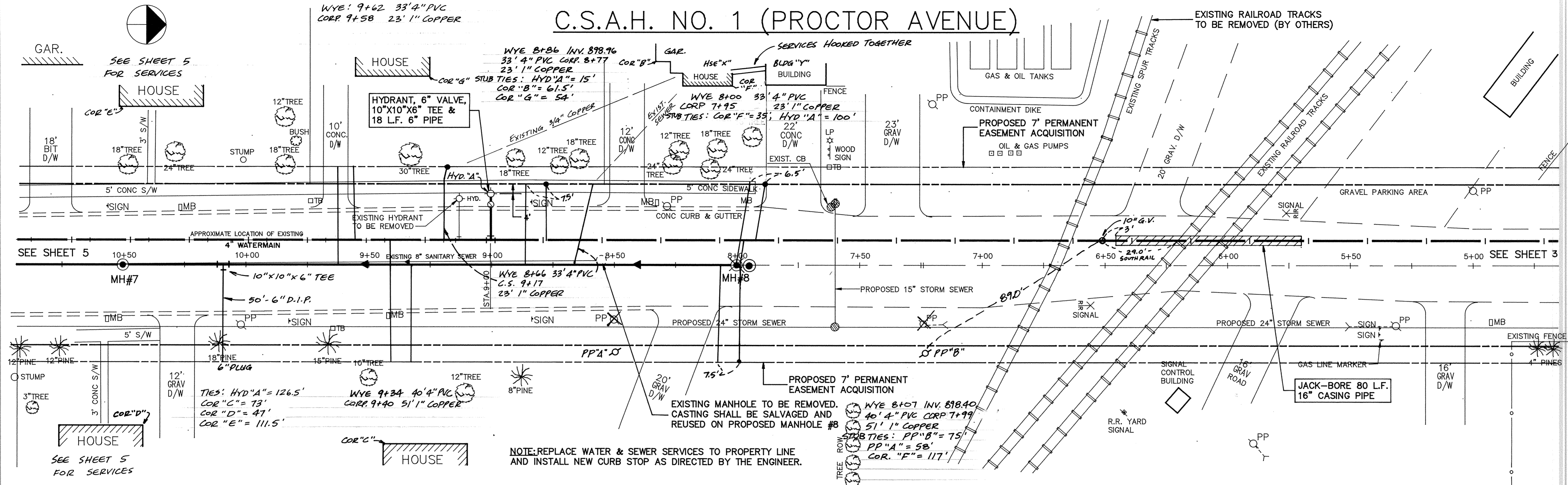


# C.S.A.H. NO. 1 (PROCTOR AVENUE)



I HEREBY CERTIFY THAT THIS PLAN, SPECIFICATION OR REPORT WAS PREPARED BY ME OR UNDER MY DIRECT SUPERVISION AND THAT I AM A DULY REGISTERED PROFESSIONAL ENGINEER UNDER THE LAWS OF THE STATE OF MINNESOTA.

*Samy M. Maier*  
 DATE 3/15/91 REG. NO. 15314

**Maier Stewart & Associates Inc.**  
 CONSULTING ENGINEERS  
 1959 SLOAN PLACE (612) 774-6021 ST. PAUL, MINNESOTA 55117

DATE	DESCRIPTION	DESIGNED	VGH
		CHECKED	GG
		DRAWN	GG
		GRAPHIC SCALE	0 HORIZ. 20
			0 VERT. 5

**SHERBURNE COUNTY**  
 SANITARY SEWER & WATERMAIN IMPROVEMENTS  
 C.S.A.H. NO. 1 (PROCTOR AVENUE)  
 S.A.P. 71-601-13

DATE JAN. 1991 SHEET 4 OF 28 SHEETS PROJECT NO. 231-001