

C.S.A.H. NO. 1 (PROCTOR AVENUE)

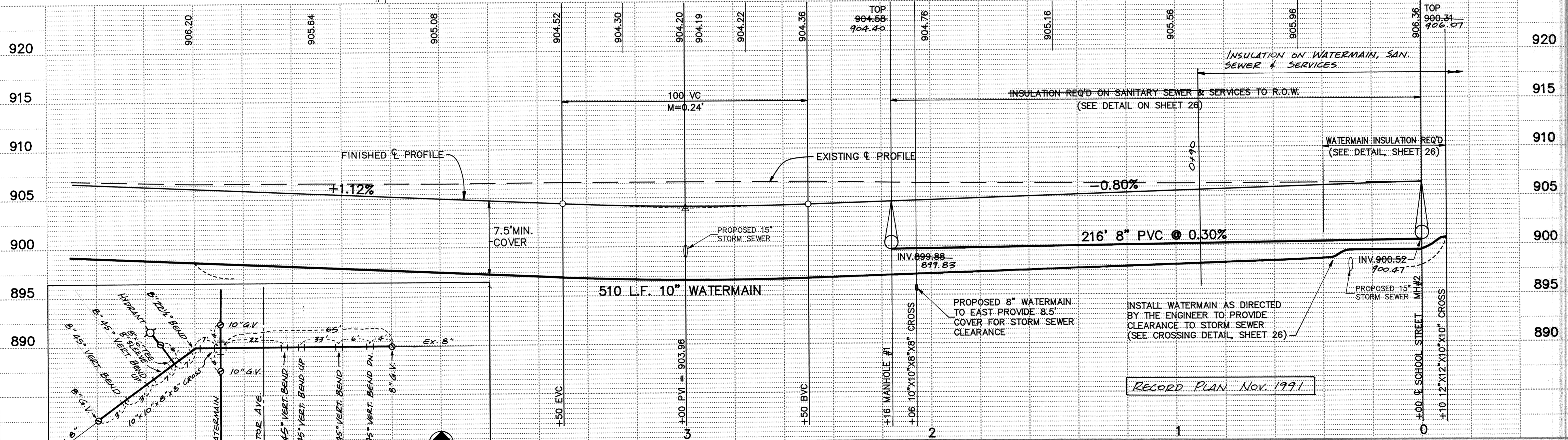
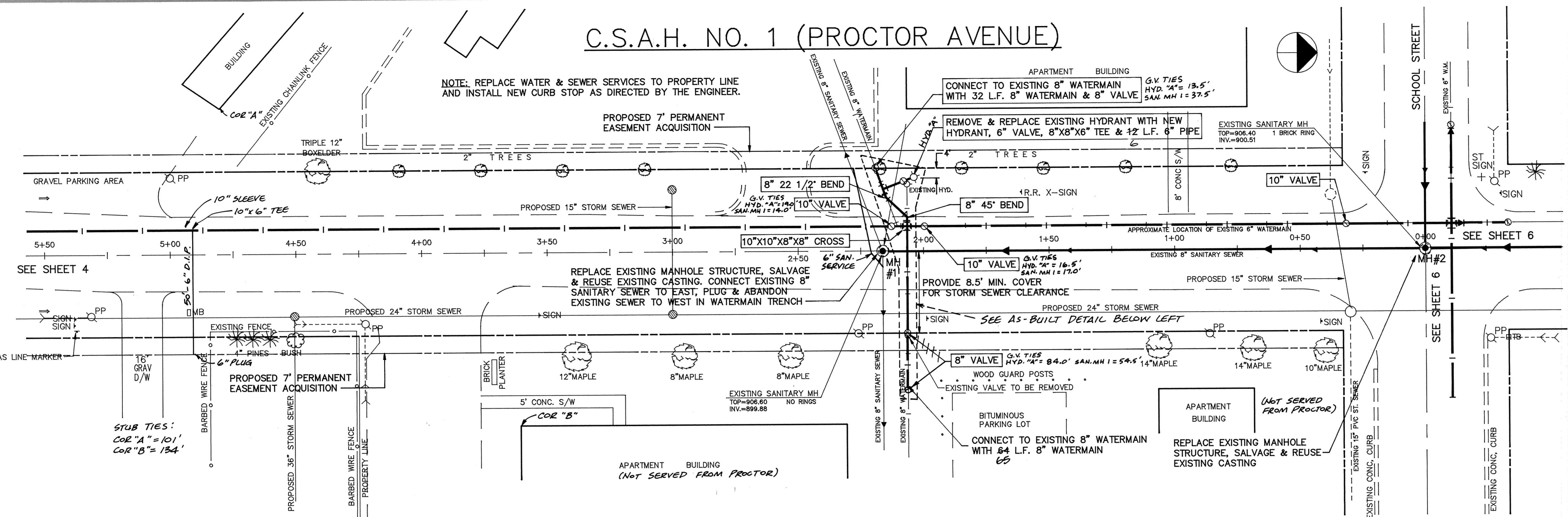
NOTE: REPLACE WATER & SEWER SERVICES TO PROPERTY LINE AND INSTALL NEW CURB STOP AS DIRECTED BY THE ENGINEER.

PROPOSED 7' PERMANENT EASEMENT ACQUISITION

CONNECT TO EXISTING 8" WATERMAIN WITH 32 L.F. 8" WATERMAIN & 8" VALVE

REMOVE & REPLACE EXISTING HYDRANT WITH NEW HYDRANT, 6" VALVE, 8"X8"X6" TEE & 12 L.F. 6" PIPE

EXISTING SANITARY MH
TOP=906.40
INV.=900.51



AS-BUILT DETAIL
NO SCALE

I HEREBY CERTIFY THAT THIS PLAN, SPECIFICATION, OR REPORT WAS PREPARED BY ME OR UNDER MY DIRECT SUPERVISION AND THAT I AM A DULY REGISTERED PROFESSIONAL ENGINEER UNDER THE LAWS OF THE STATE OF MINNESOTA.
Luigi Mauro
DATE 3/15/91 REG. NO. 15316

MS&A CONSULTING ENGINEERS
Maier Stewart & Associates Inc.
1959 SLOAN PLACE (612) 774-6021 ST. PAUL, MINNESOTA 55117

DATE	DESCRIPTION	DESIGNED	CHECKED	DRAWN
		VGH	VGH	GG
REVISIONS		GRAPHIC SCALE		
		0 HORIZ. 20		
		0 VERT. 5		

SHERBURNE COUNTY
SANITARY SEWER & WATERMAIN IMPROVEMENTS
C.S.A.H. NO. 1 (PROCTOR AVENUE)
S.A.P. 71-601-13
DATE JAN. 1991 SHEET 3 OF 28 SHEETS PROJECT NO. 231-001

DRAWING NUMBER 10SAH 91
DRAWING NUMBER 3
DRAWING NUMBER 444