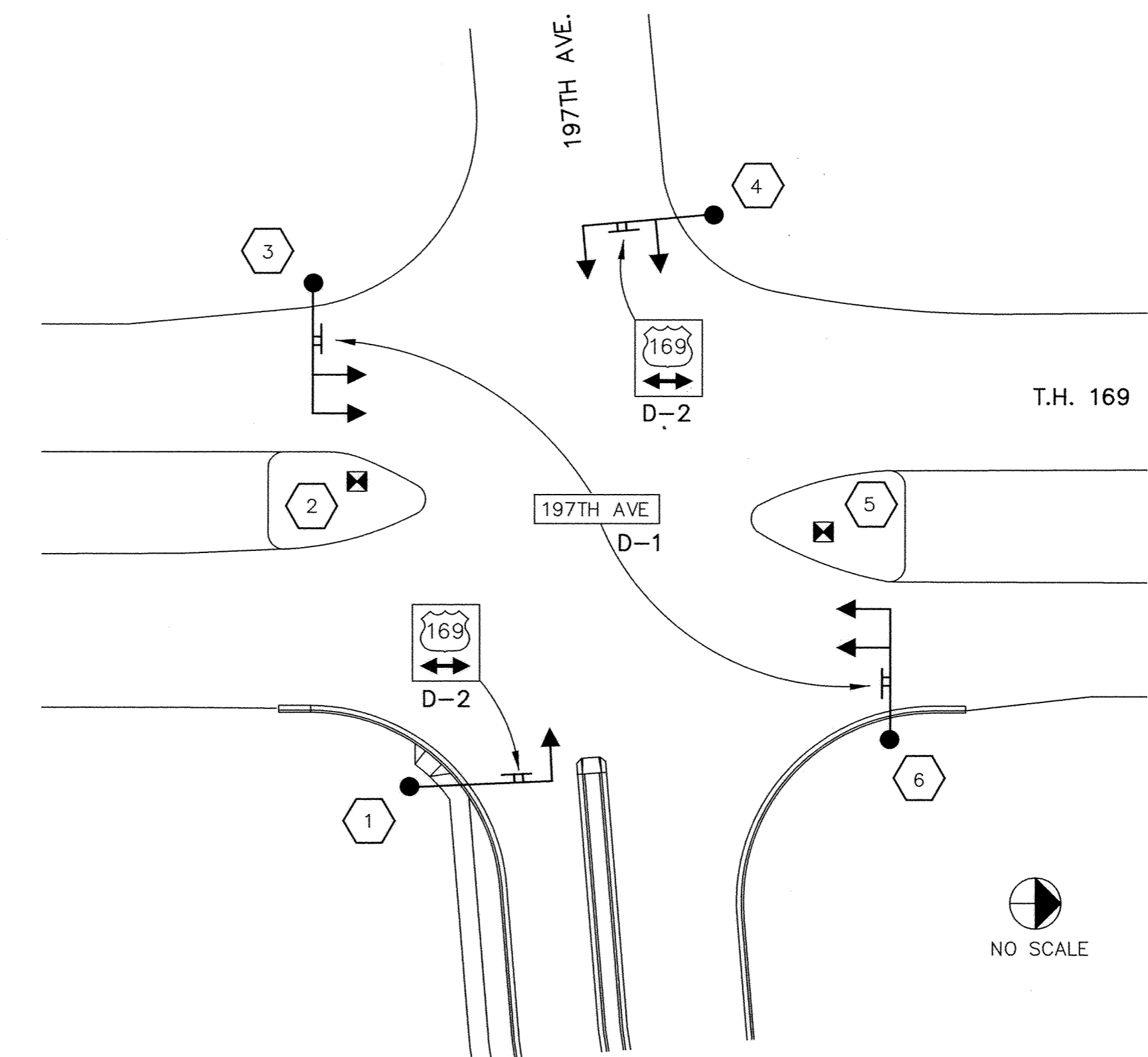


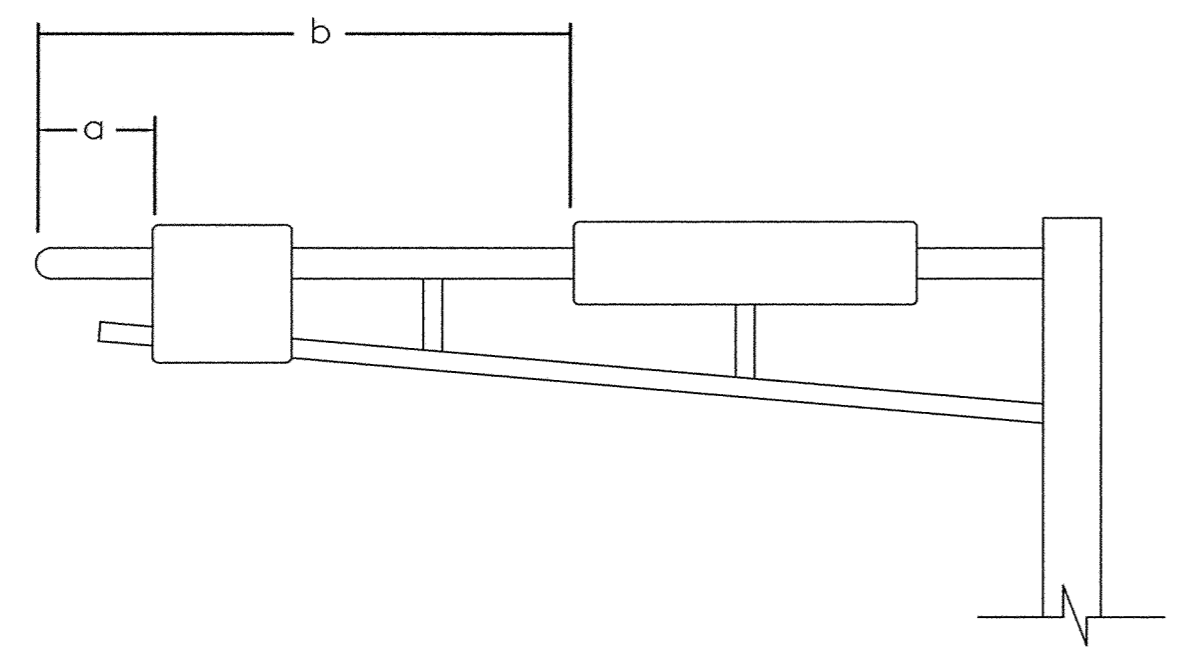
SFCO PRODUCTS • NEW HOPE, MINNESOTA
 REVISION BY PART NUMBER 0552
 PREPARED UNDER THE SUPERVISION OF THE ENGINEER



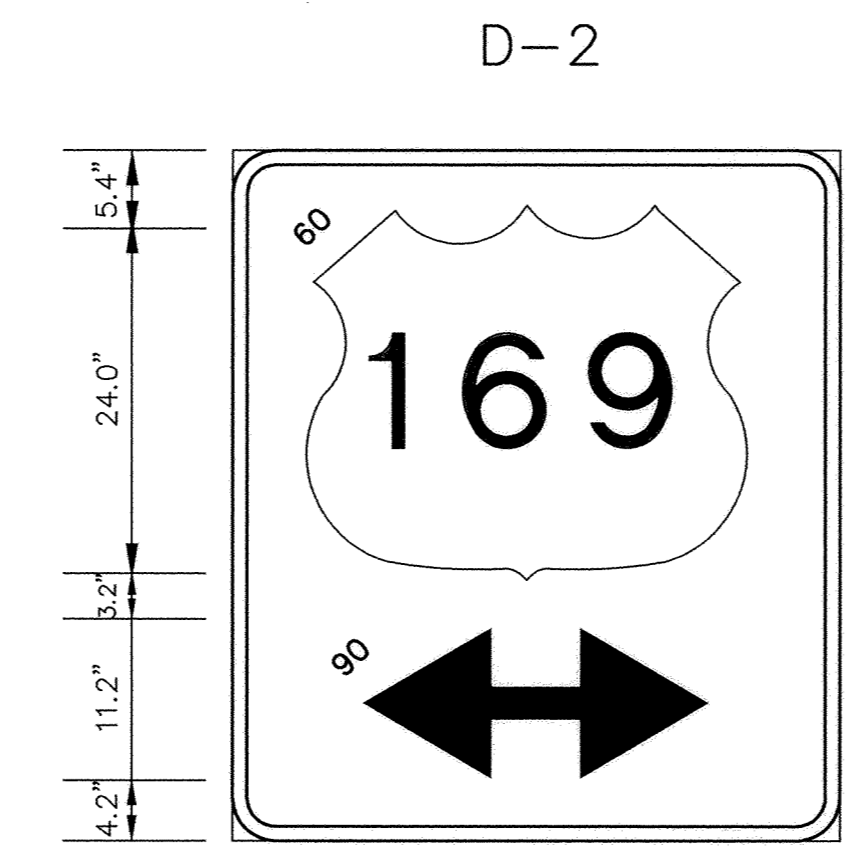
MAST ARM SIGN LAYOUT @ TH 169/197TH AVE.

MAST ARM MOUNTED SIGNS								
SIGN PANEL	SIZE	NUMBER REQUIRED	BRACKETS PER SIGN	BRACKET SPACING	SQUARE FT. PER SIGN	a	b	POLE NUMBER
D-1	78" x 18"	2	2	42"	9.75		28'	③, ⑥
D-2	42" x 48"	2	2	24"	14.00	4'		①, ④

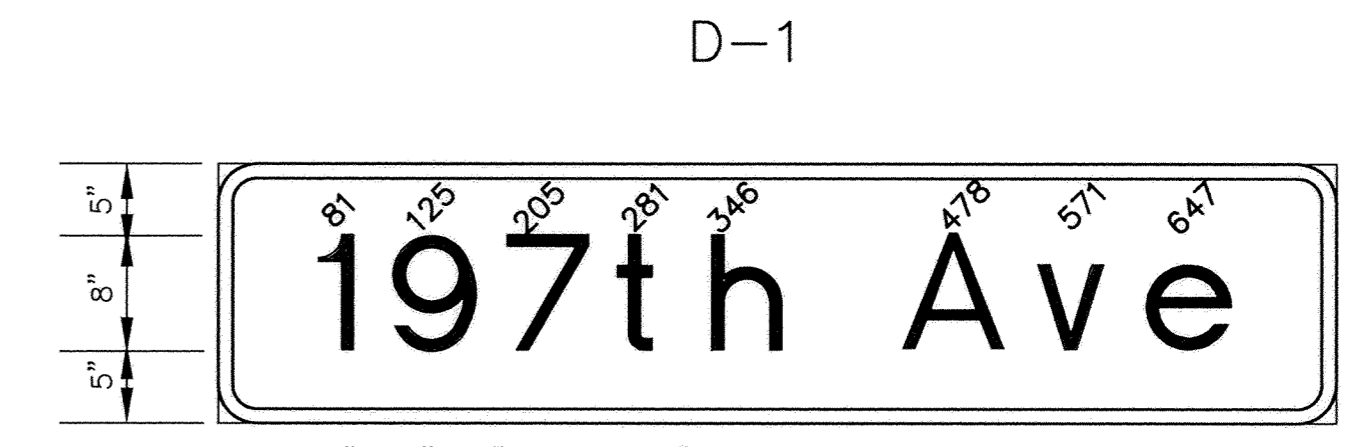
OVERLAYS				
CODE NO.	QUANTITY	SIZE	LEGEND	SQ. FT. PER OVERLAY
M1-4A	2	30" x 24"	169	5.00



MAST ARM SIGN DIMENSIONING DETAIL



42"x48", 3" R. 1.0"B,
 LINE 1 30.0 : 30"x24"OL-10" NUM
 LINE 2 24.0 : 5-24 DBL ARROW



78"x18", 3" R. 1.0"B,
 LINE 1 61.8 : 8"- 6" E MOD.

- NOTES:**
- COLOR - HIGH INTENSITY WHITE LEGEND AND BORDER ON HIGH INTENSITY GREEN BACKGROUND, FULLY REFLECTORIZED.
 - CORNERS EXTENDING BEYOND THE BORDER SHALL NOT BE TRIMMED.
 - BORDERS SHALL BE AS SHOWN ON PLANS.
 - FOR STRUCTURAL DETAILS, TYPE "D" SIGNS, SEE STANDARD SIGNS MANUAL, PAGE 105B.
 - FOR TYPE "D" STRINGER AND PANEL - JOINT DETAIL, SEE STANDARD SIGNS MANUAL, PAGE 105.
 - LETTERING STYLE SHALL BE HIGHWAY GOTHIC CONFORMING TO MN/DOT STANDARDS.

SIGN DETAILS

RECORD PLAN
 DECEMBER 1998

I HEREBY CERTIFY THAT THIS PLAN, SPECIFICATION, OR REPORT WAS PREPARED BY ME OR UNDER MY DIRECT SUPERVISION AND THAT I AM A DULY REGISTERED PROFESSIONAL ENGINEER UNDER THE LAWS OF THE STATE OF MINNESOTA. <i>George W. Stumpfig</i> DATE <u>3/11/97</u> REG. NO. <u>21849</u>		1326 ENERGY PARK DRIVE ST. PAUL, MINNESOTA 55108 (612) 644-4389	DATE	DESCRIPTION	DESIGNED _____	CITY OF ELK RIVER TRUNK HIGHWAY 169 AT 197TH AVENUE S.A.P. 204-116-01 MAST ARM SIGN DETAILS
			REVISIONS		CHECKED _____	
			GRAPHIC SCALE 0 NA 0 VERT. NA		DATE DEC 1996 SHEET 8 OF 9 SHEETS PROJECT NO. 230-306	