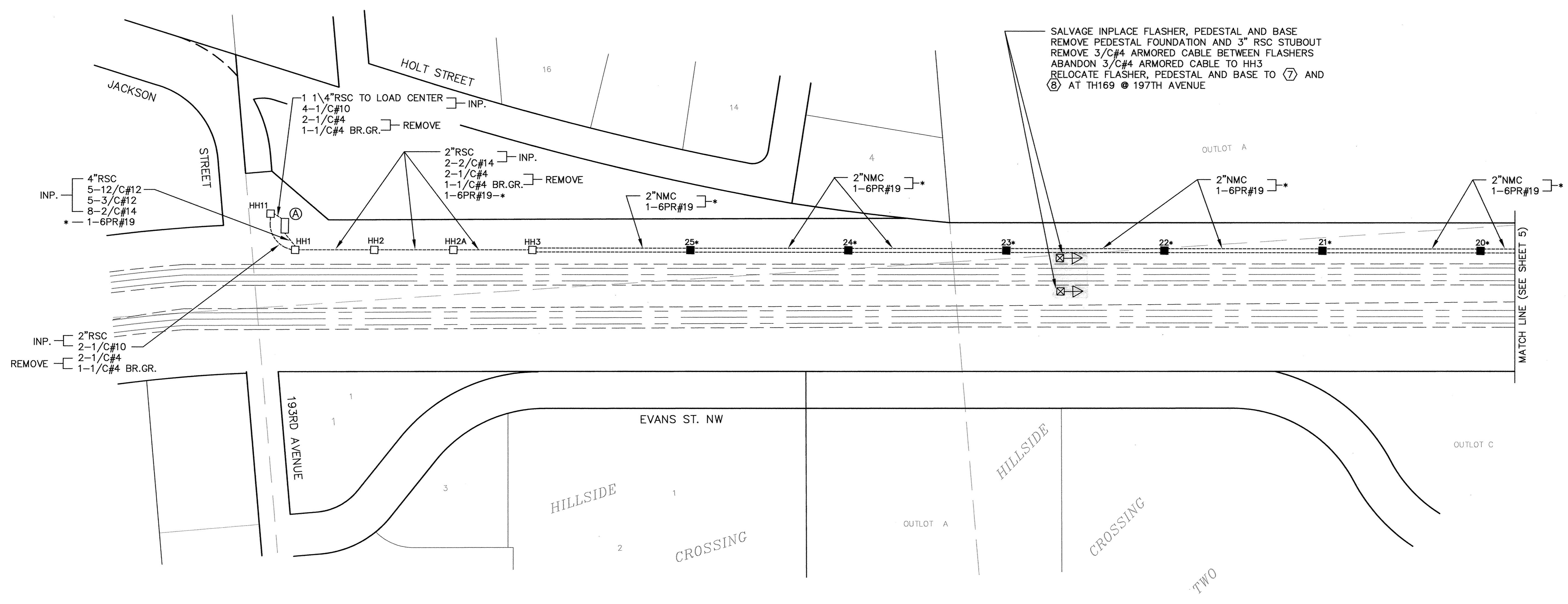
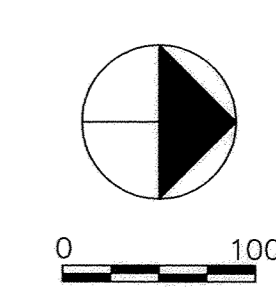


# US HIGHWAY NO. 169



SALVAGE INPLACE FLASHER, PEDESTAL AND BASE  
 REMOVE PEDESTAL FOUNDATION AND 3" RSC STUBOUT  
 REMOVE 3/C#4 ARMORED CABLE BETWEEN FLASHERS  
 ABANDON 3/C#4 ARMORED CABLE TO HH3  
 RELOCATE FLASHER, PEDESTAL AND BASE TO (7) AND  
 (8) AT TH169 @ 197TH AVENUE

\* INDICATES ITEMS TO BE INCLUDED IN INTERCONNECT SYSTEM PAY ITEM.  
 ALL OTHER WORK THIS SHEET TO BE INCLUDED IN TH169/197TH AVE.  
 SIGNAL SYSTEM PAY ITEM.



RECORD PLAN  
 DECEMBER 1998

I HEREBY CERTIFY THAT THIS PLAN, SPECIFICATION,  
 OR REPORT WAS PREPARED BY ME OR UNDER MY DIRECT  
 SUPERVISION AND THAT I AM A DULY REGISTERED  
 PROFESSIONAL ENGINEER UNDER THE LAWS OF THE  
 STATE OF MINNESOTA.  
*George M. Stuenkel*  
 DATE 5/12/97 REG. NO. 21849



1326 ENERGY PARK DRIVE  
 ST. PAUL, MINNESOTA 55108  
 (612) 644-4389

| REVISIONS | DATE   | DESCRIPTION      | DESIGNED | CHECKED | DRAWN |
|-----------|--------|------------------|----------|---------|-------|
|           | 5/9/97 | PER MNDOT REVIEW |          |         |       |
|           |        |                  |          |         |       |
|           |        |                  |          |         |       |

GRAPHIC SCALE  
 0 100  
 0 VERT. NA

CITY OF ELK RIVER  
 TRUNK HIGHWAY 169 AT 197TH AVENUE  
 S.A.P. 204-116-01  
 INTERCONNECT TO T.H. 169 @ JACKSON ST./193RD AVE.

DATE DEC 1996 SHEET 7 OF 9 SHEETS PROJECT NO. 230-306

1304

DRAWING NUMBER  
 197AV/97  
 7  
 SARGO PRODUCTS • NEW HOPE, MINNESOTA  
 REPORT BY PART NUMBER 8028  
 DRAWING NUMBER  
 SARGO PRODUCTS • NEW HOPE, MINNESOTA  
 REPORT BY PART NUMBER 8028  
 DRAWING NUMBER  
 SARGO PRODUCTS • NEW HOPE, MINNESOTA  
 REPORT BY PART NUMBER 8028  
 DRAWING NUMBER  
 SARGO PRODUCTS • NEW HOPE, MINNESOTA  
 REPORT BY PART NUMBER 8028  
 DRAWING NUMBER