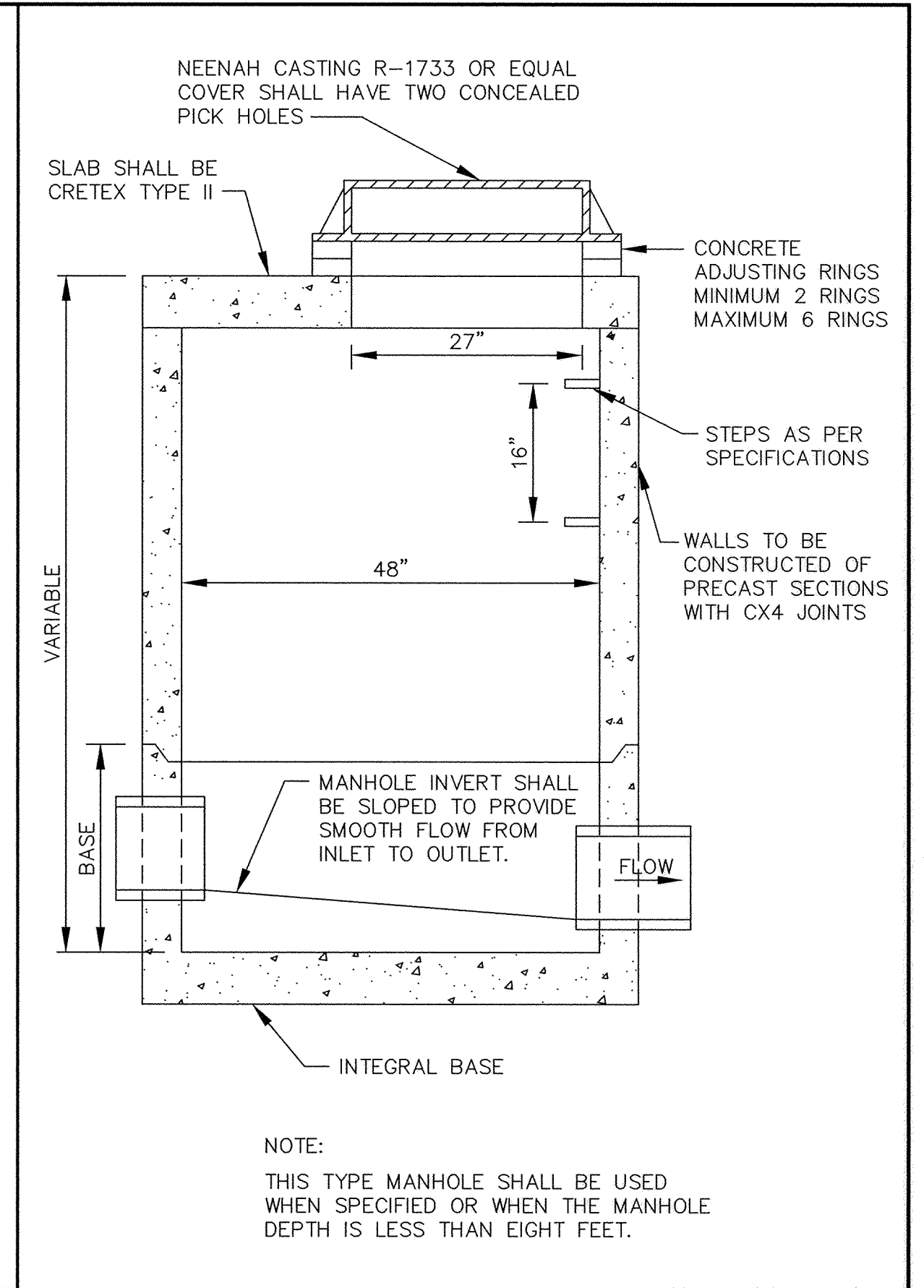
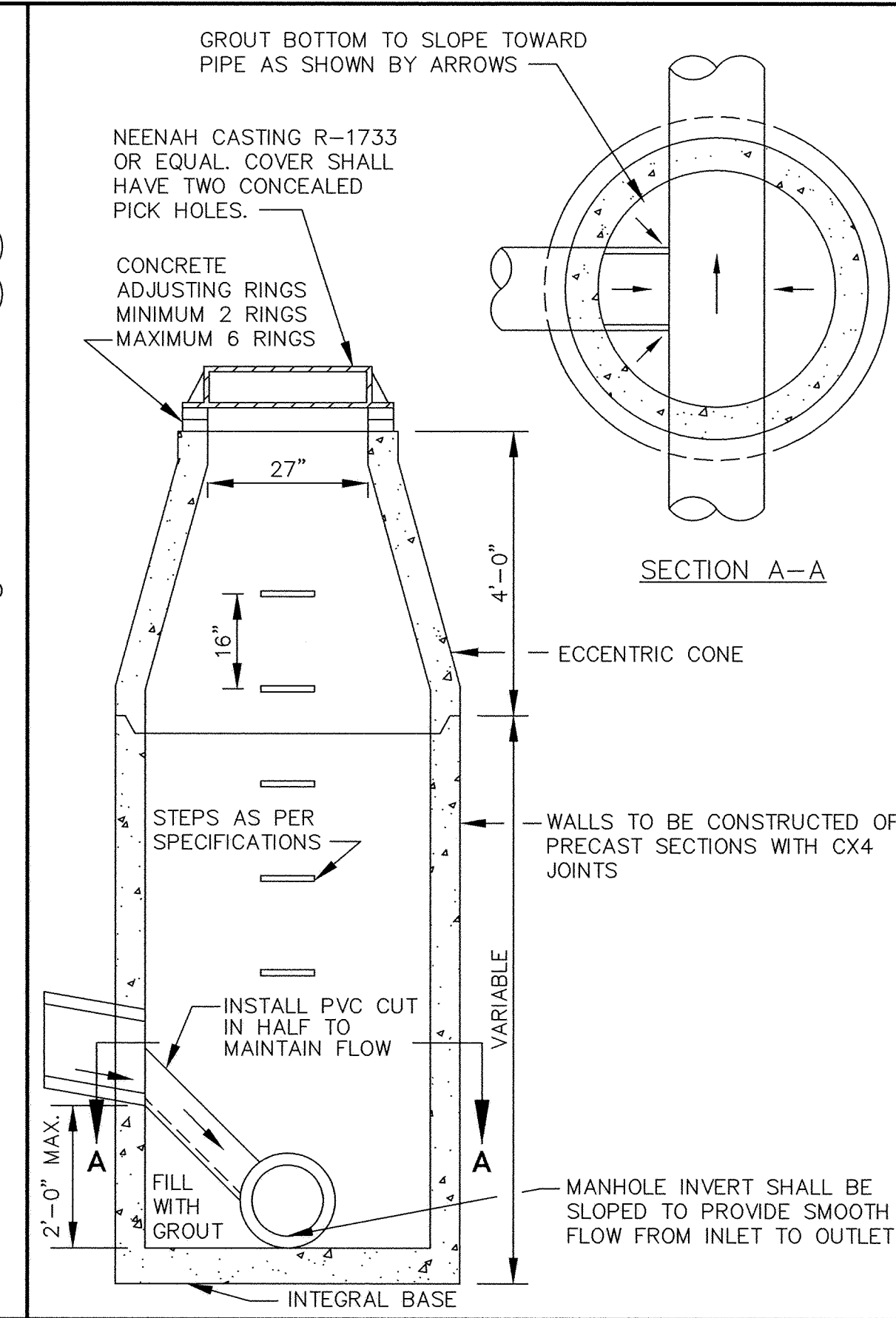


SAFECO PRODUCTS • NEW HAVEN, CONNECTICUT
REORDER BY PART NUMBER 6592
MINNESOTA DIVISION OF HIGHWAY DESIGN
SAFECO PRODUCTS • NEW HAVEN, CONNECTICUT
REORDER BY PART NUMBER 6592
MINNESOTA DIVISION OF HIGHWAY DESIGN

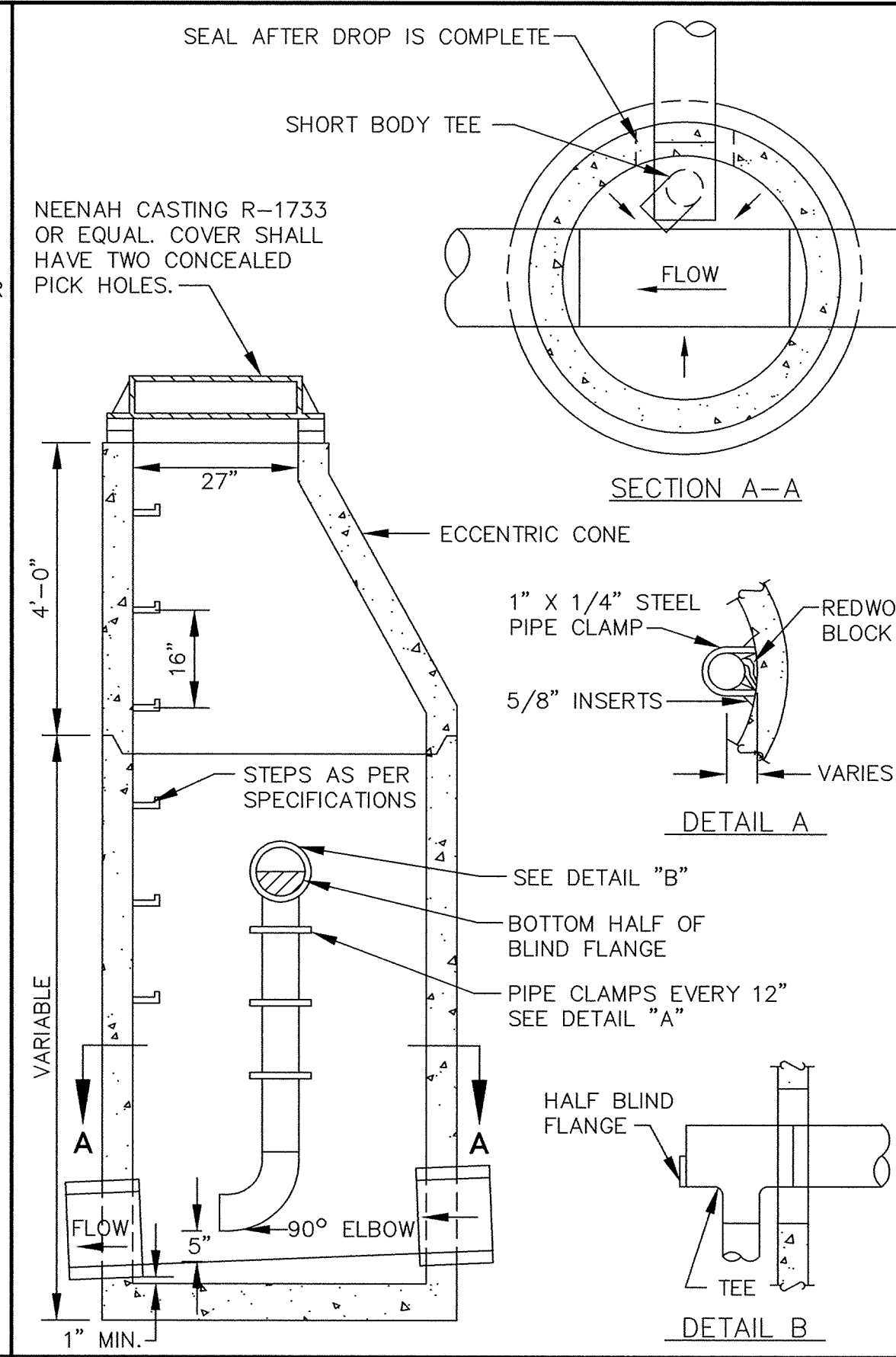


NOTE:
THIS TYPE MANHOLE SHALL BE USED
WHEN SPECIFIED OR WHEN THE MANHOLE
DEPTH IS LESS THAN EIGHT FEET.

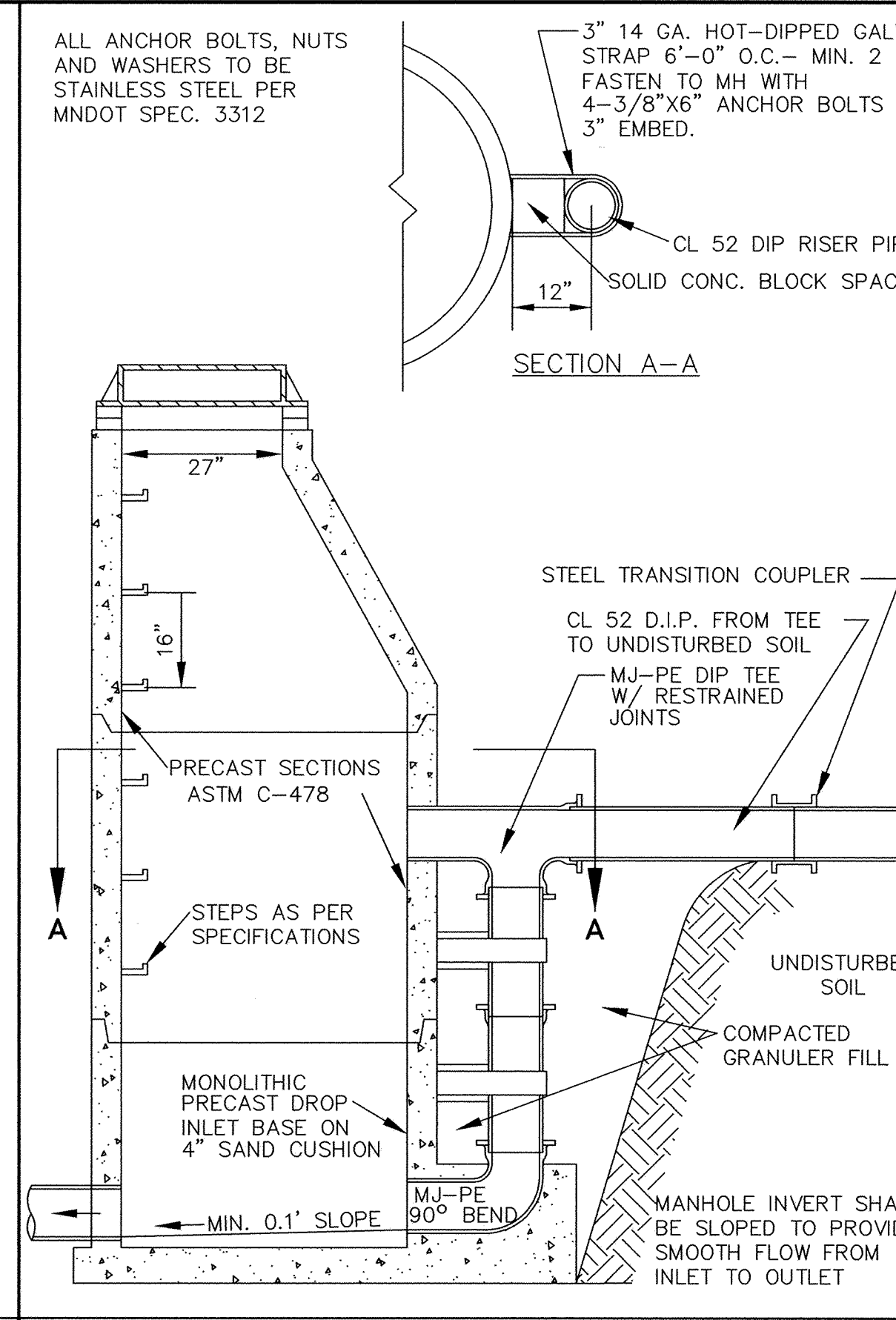
SLAB TOP MANHOLE



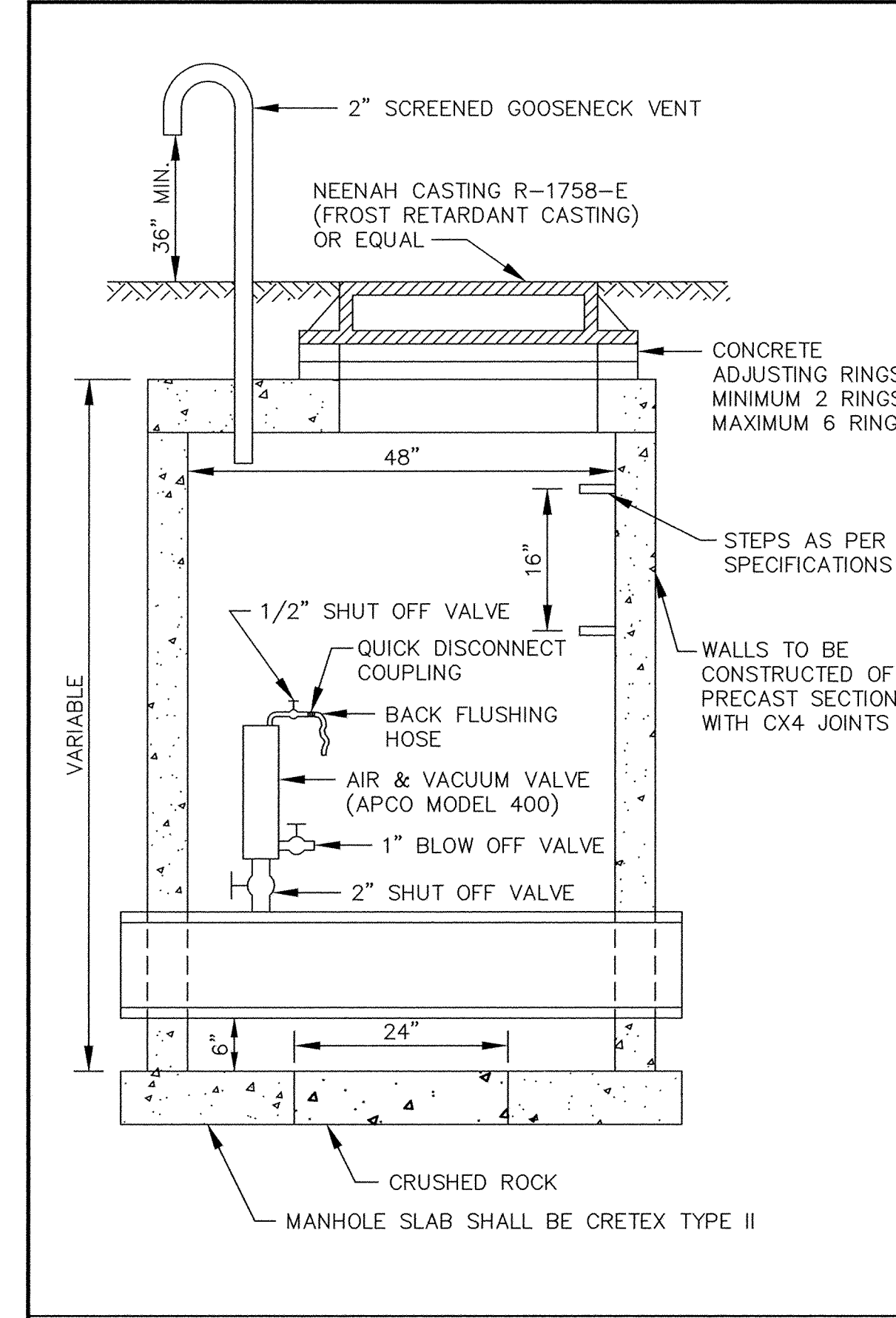
INSIDE DROP MANHOLE (TWO FEET OR LESS)



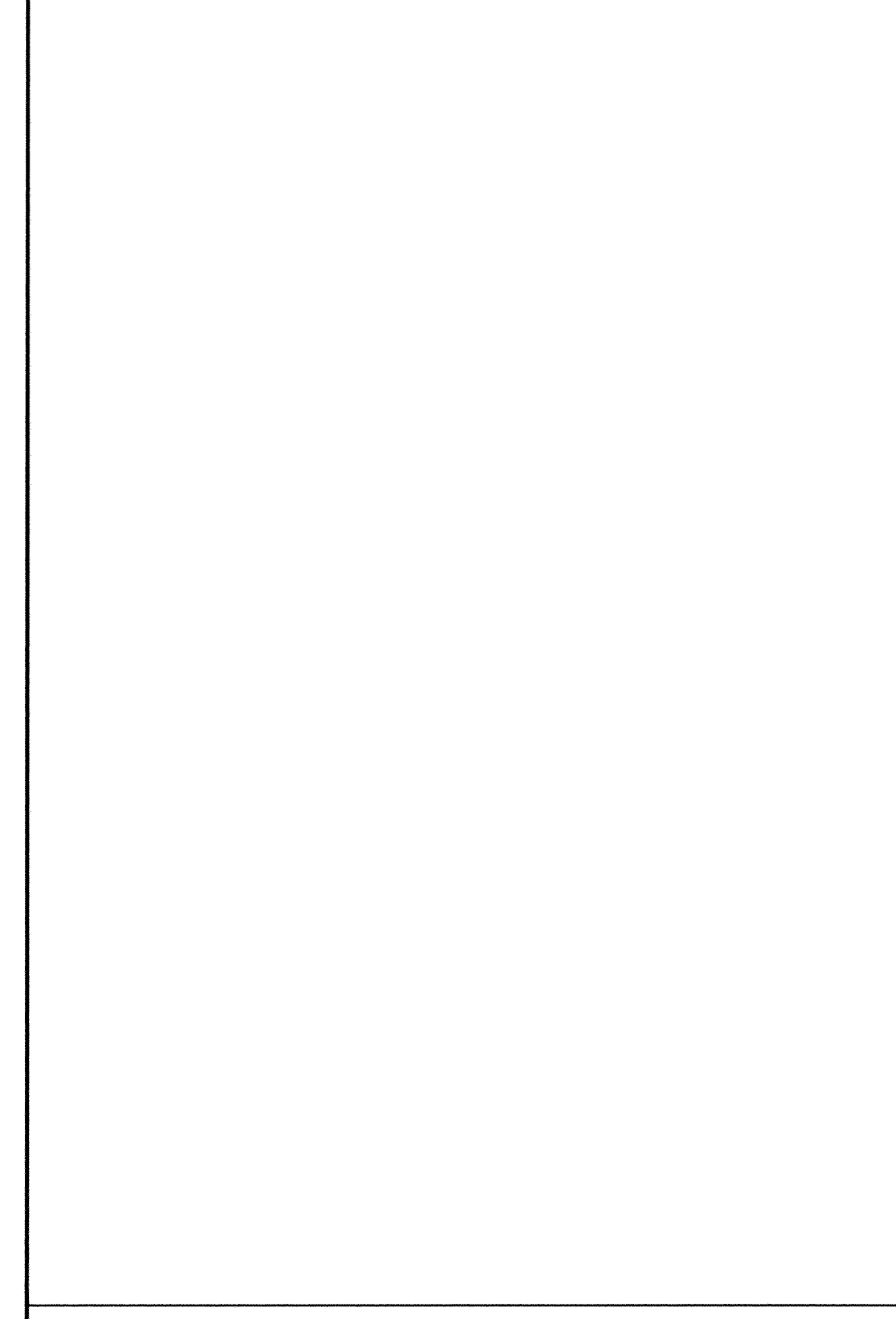
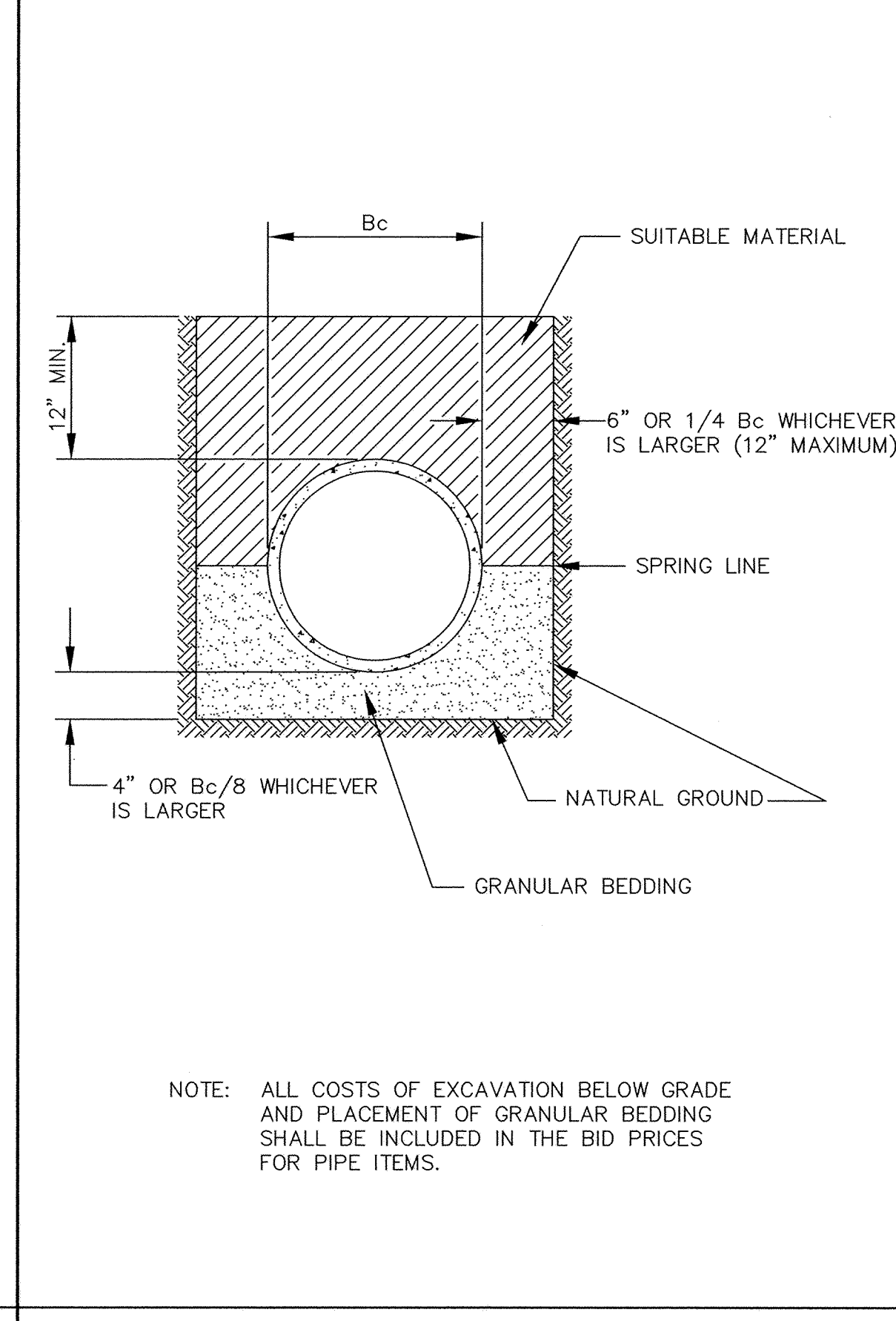
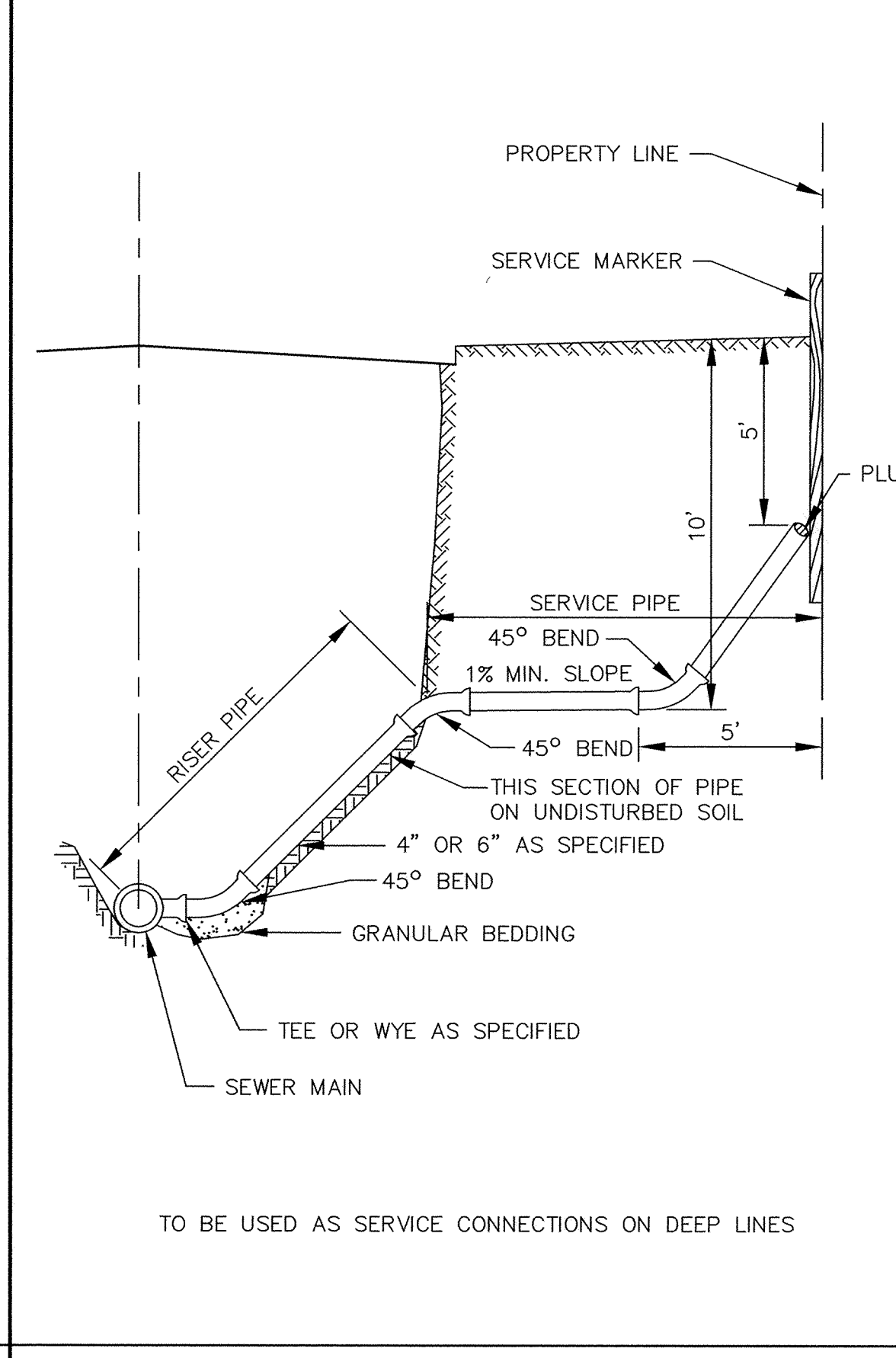
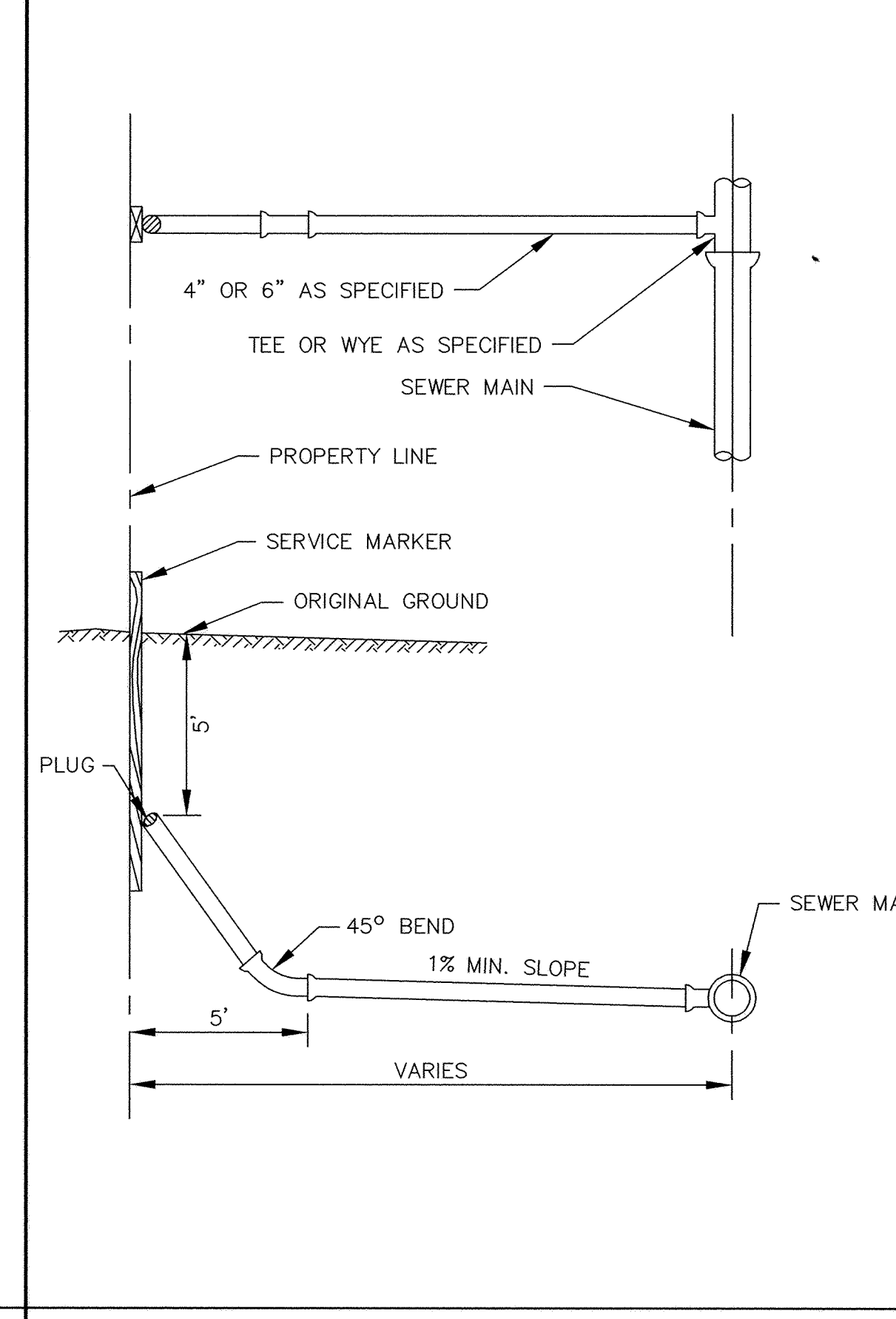
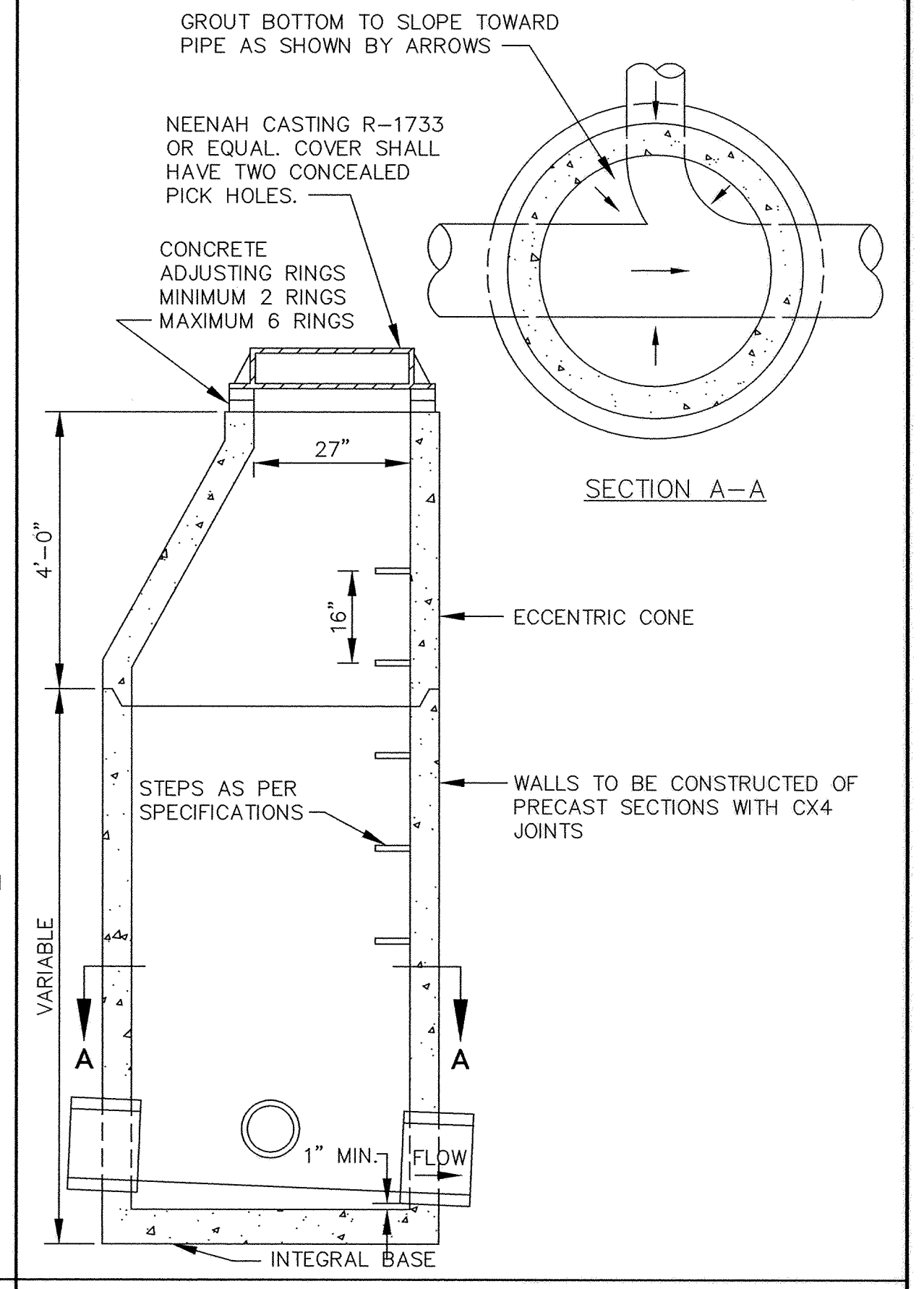
INSIDE DROP MANHOLE



OUTSIDE DROP MANHOLE

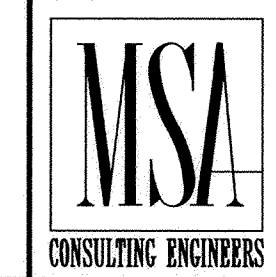


STANDARD AIR RELIEF MANHOLE



RECORD DRAWING
OCTOBER 1997

I HEREBY CERTIFY THAT THIS PLAN, SPECIFICATION,
OR REPORT WAS PREPARED BY ME OR UNDER MY DIRECT
SUPERVISION AND THAT I AM A DULY REGISTERED
PROFESSIONAL ENGINEER UNDER THE LAWS OF THE
STATE OF MINNESOTA.
Robert M. Mauer
DATE 3/29/96 REG. NO. 15316



1326 ENERGY PARK DRIVE
ST. PAUL, MINNESOTA 55108
(612) 644-4389
5075 WAYZATA BLVD. SUITE #225
MINNEAPOLIS, MINNESOTA 55416
(612) 546-0432

DATE	DESCRIPTION	DESIGNED
		CHECKED
		DRAWN
		GRAPHIC SCALE
		0 HORIZ. N/A
		0 VERT.

CITY OF ELK RIVER		
185TH AVENUE / T.H. 10 TURN LANES		
SANITARY SEWER DETAILS		
DATE	JAN 1996	SHEET 38 OF 41 SHEETS
PROJECT NO.	230-277	