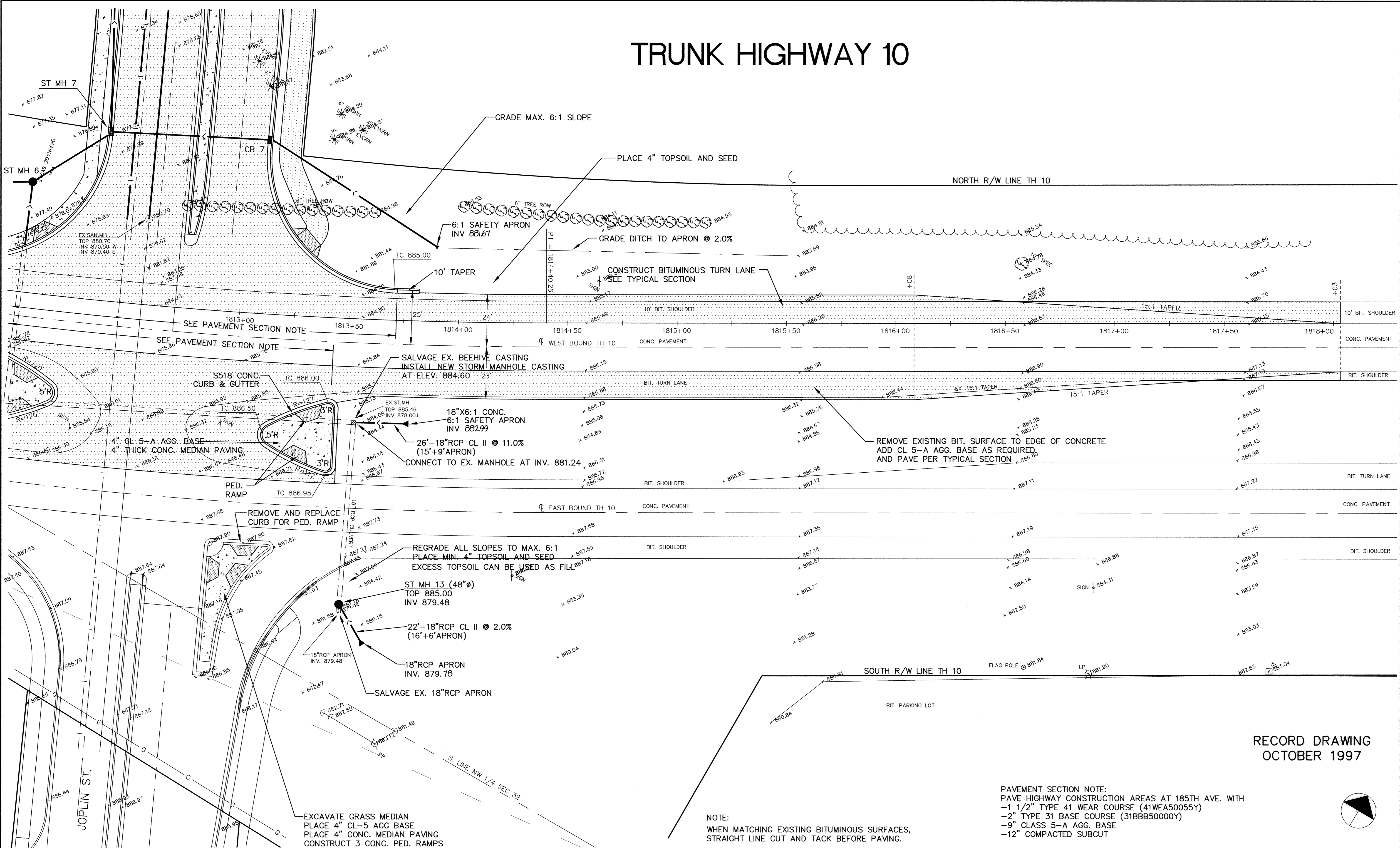


TRUNK HIGHWAY 10



RECORD DRAWING
OCTOBER 1997

PAVEMENT SECTION NOTE:
PAVE HIGHWAY CONSTRUCTION AREAS AT 185TH AVE. WITH
-1 1/2" TYPE 41 WEAR COURSE (41WEA50055Y)
-2" TYPE 31 BASE COURSE (31BBB50000Y)
-9" CLASS 5-A AGG. BASE
-12" COMPACTED SUBCUT

NOTE:
WHEN MATCHING EXISTING BITUMINOUS SURFACES,
STRAIGHT LINE CUT AND TACK BEFORE PAVING.

I HEREBY CERTIFY THAT THIS PLAN, SPECIFICATION,
OR REPORT WAS PREPARED BY ME OR UNDER MY DIRECT
SUPERVISION AND THAT I AM A DULY REGISTERED
PROFESSIONAL ENGINEER UNDER THE LAWS OF THE
STATE OF MINNESOTA
Ken J. Mauer
DATE 3/29/96 REG. NO. 15316



1326 ENERGY PARK DRIVE
ST. PAUL, MINNESOTA 55108
(612) 644-4389
5075 WAYZATA BLVD. SUITE #225
MINNEAPOLIS, MINNESOTA 55416
(612) 546-0432

DATE	DESCRIPTION	DESIGNED	BY
3/22/96	PER MNDOT REVIEW	CSF	
		CHECKED	
		DRAWN	
REVISIONS		GRAPHIC SCALE	
		0	20
		0	NA
		VERT.	NA

CITY OF ELK RIVER			
TRUNK HIGHWAY 10			
TURN LANE CONSTRUCTION			
WEST BOUND T.H. 10 AT 185TH AVE./JOPLIN ST.			
S.P. 7102-87(TH 10)		1813+00 (TH 10) TO 1818+00 (TH10)	
DATE	JAN 1996	SHEET	27 OF 41 SHEETS
PROJECT NO.	230-277		

DRAWING NUMBER

DRAWING NUMBER

DRAWING NUMBER

DRAWING NUMBER