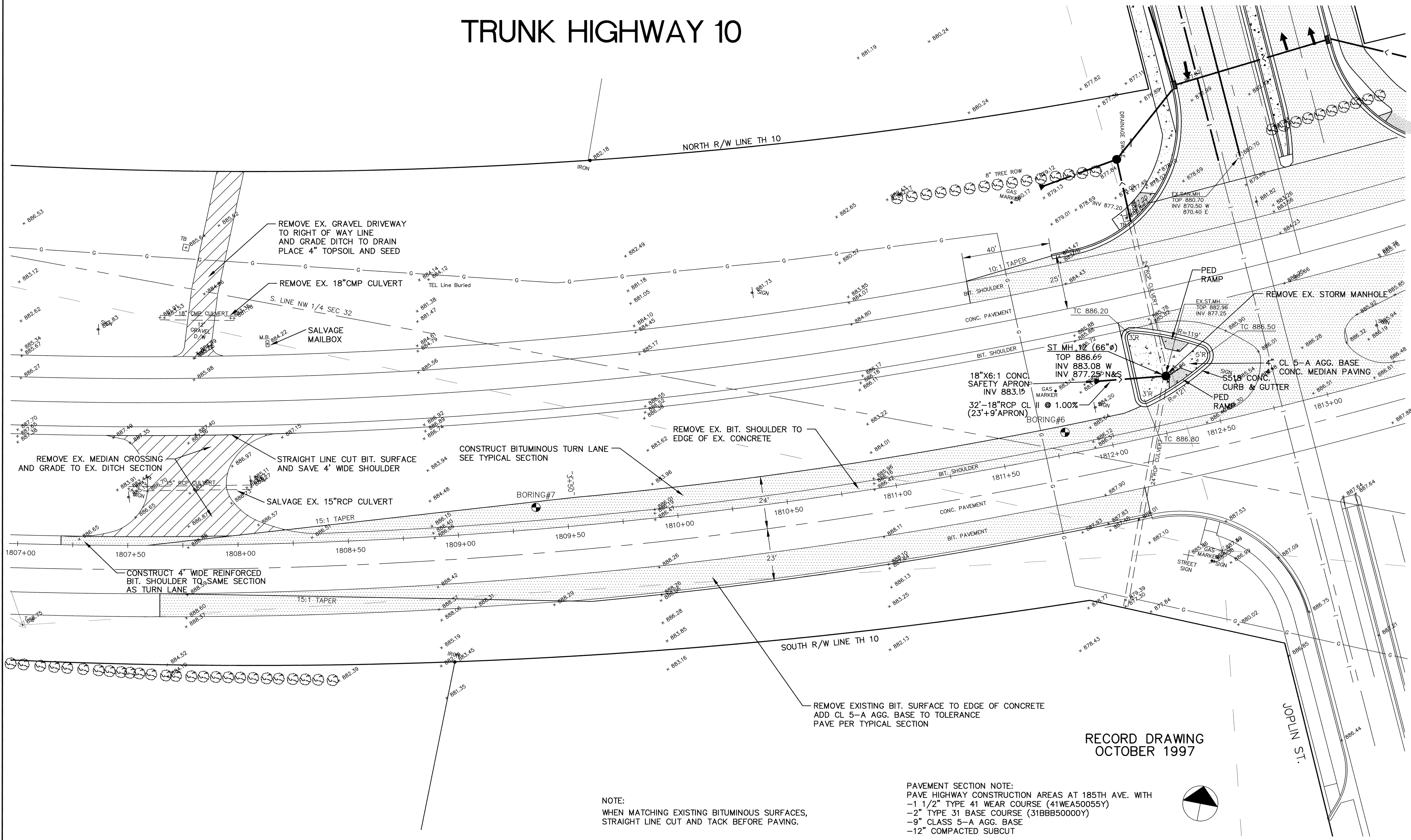


TRUNK HIGHWAY 10

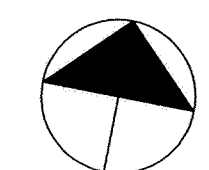


NOTE:
WHEN MATCHING EXISTING BITUMINOUS SURFACES,
STRAIGHT LINE CUT AND TACK BEFORE PAVING.

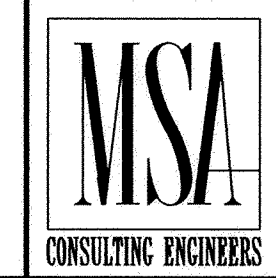
REMOVE EXISTING BIT. SURFACE TO EDGE OF CONCRETE
ADD CL 5-A AGG. BASE TO TOLERANCE
PAVE PER TYPICAL SECTION

PAVEMENT SECTION NOTE:
PAVE HIGHWAY CONSTRUCTION AREAS AT 185TH AVE. WITH
-1 1/2" TYPE 41 WEAR COURSE (41WEA50055Y)
-2" TYPE 31 BASE COURSE (31BBB50000Y)
-9" CLASS 5-A AGG. BASE
-12" COMPACTED SUBCUT

RECORD DRAWING
OCTOBER 1997



I HEREBY CERTIFY THAT THIS PLAN, SPECIFICATION,
OR REPORT WAS PREPARED BY ME OR UNDER MY DIRECT
SUPERVISION AND THAT I AM A DULY REGISTERED
PROFESSIONAL ENGINEER UNDER THE LAWS OF THE
STATE OF MINNESOTA.
Clayton M. Menn
DATE 3/27/96 REG. NO. 15316



1326 ENERGY PARK DRIVE
ST. PAUL, MINNESOTA 55108
(612) 644-4389
5075 WAYZATA BLVD. SUITE #225
MINNEAPOLIS, MINNESOTA 55416
(612) 546-0432

DATE	DESCRIPTION	DESIGNED	BY
3/22/96	PER MNDOT REVIEW	CHECKED	BY
		DRAWN	BY

GRAPHIC SCALE	0	20
0	VERT.	NA

CITY OF ELK RIVER
TRUNK HIGHWAY 10
TURN LANE CONSTRUCTION
EAST BOUND T.H. 10 AT 185TH AVE. JOPLIN ST.
S.P. 7102-87(TH 10) 1807+50 (TH 10) TO 1812+50 (TH10)
DATE JAN 1996 SHEET 26 OF 41 SHEETS PROJECT NO. 230-277