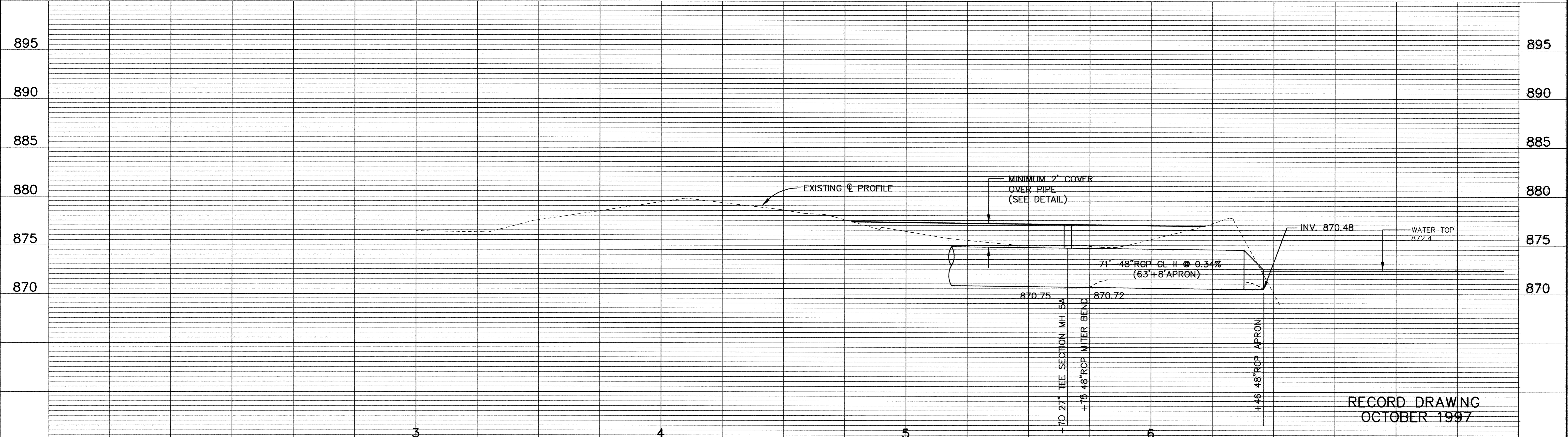
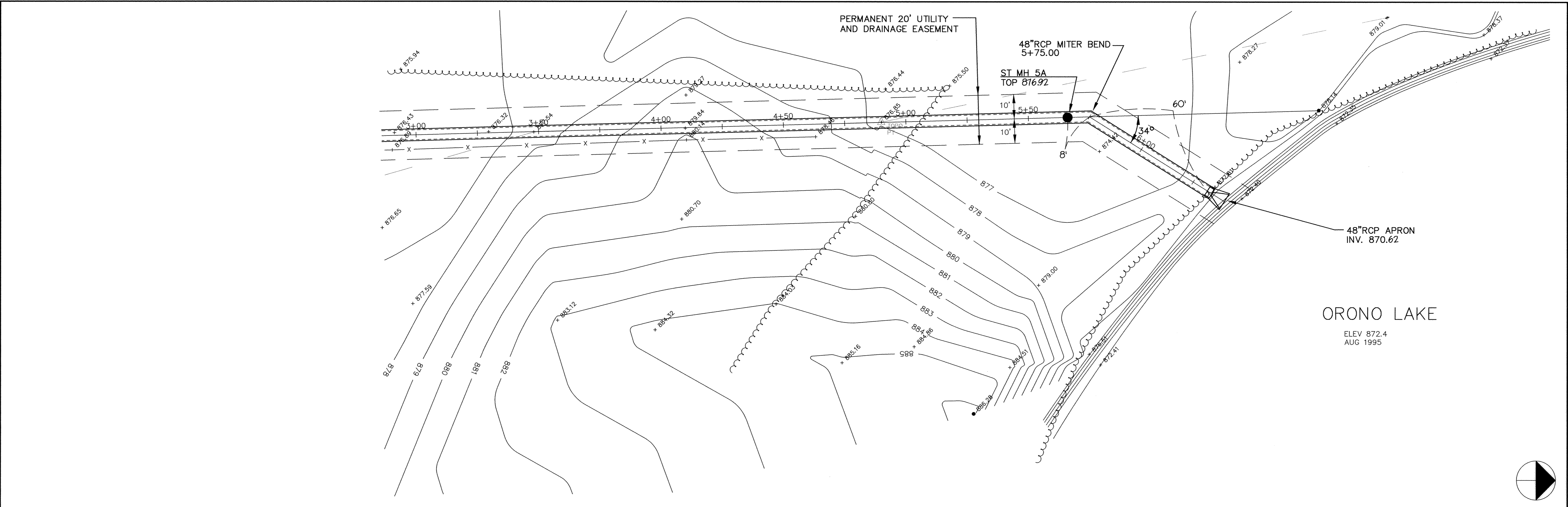


SDCO PRODUCTS • NEVA AUSTE, MINNESOTA
REGISTERED PROFESSIONAL ENGINEER
REVISIONS: SEE SHEET 18 FOR REVISIONS

SDCO PRODUCTS • NEVA AUSTE, MINNESOTA
REGISTERED PROFESSIONAL ENGINEER
REVISIONS: SEE SHEET 18 FOR REVISIONS

SDCO PRODUCTS • NEVA AUSTE, MINNESOTA
REGISTERED PROFESSIONAL ENGINEER
REVISIONS: SEE SHEET 18 FOR REVISIONS

SDCO PRODUCTS • NEVA AUSTE, MINNESOTA
REGISTERED PROFESSIONAL ENGINEER
REVISIONS: SEE SHEET 18 FOR REVISIONS



3	4	5	6
---	---	---	---

I HEREBY CERTIFY THAT THIS PLAN, SPECIFICATION, OR REPORT WAS PREPARED BY ME OR UNDER MY DIRECT SUPERVISION AND THAT I AM A DULY REGISTERED PROFESSIONAL ENGINEER UNDER THE LAWS OF THE STATE OF MINNESOTA.

Kevin Mauer
DATE 3/29/96 REG. NO. 15316

MSA
CONSULTING ENGINEERS

1326 ENERGY PARK DRIVE
ST. PAUL, MINNESOTA 55108
(612) 644-4389

5075 WAYZATA BLVD. SUITE #225
MINNEAPOLIS, MINNESOTA 55416
(612) 546-0432

DATE	DESCRIPTION	DESIGNED	SCALE
3/22/96	PER MNDOT REVIEW	CHECKED	20
8/9/96	LOWERING STORM SEWER	DRAWN	5
REVISIONS		GRAPHIC SCALE	
		0	5
		0	VERT. 5

CITY OF ELK RIVER
185TH AVENUE
STORM SEWER CONSTRUCTION
TO ORONO LAKE

S.P. 7102-87(TH 10) 3+00 TO 6+40

DATE JAN 1996 SHEET 18 OF 41 SHEETS PROJECT NO. 230-277

D:\CAD\ElkRiver\ER277\ER277S13.dwg Wed Nov 12 10:21:56 1997