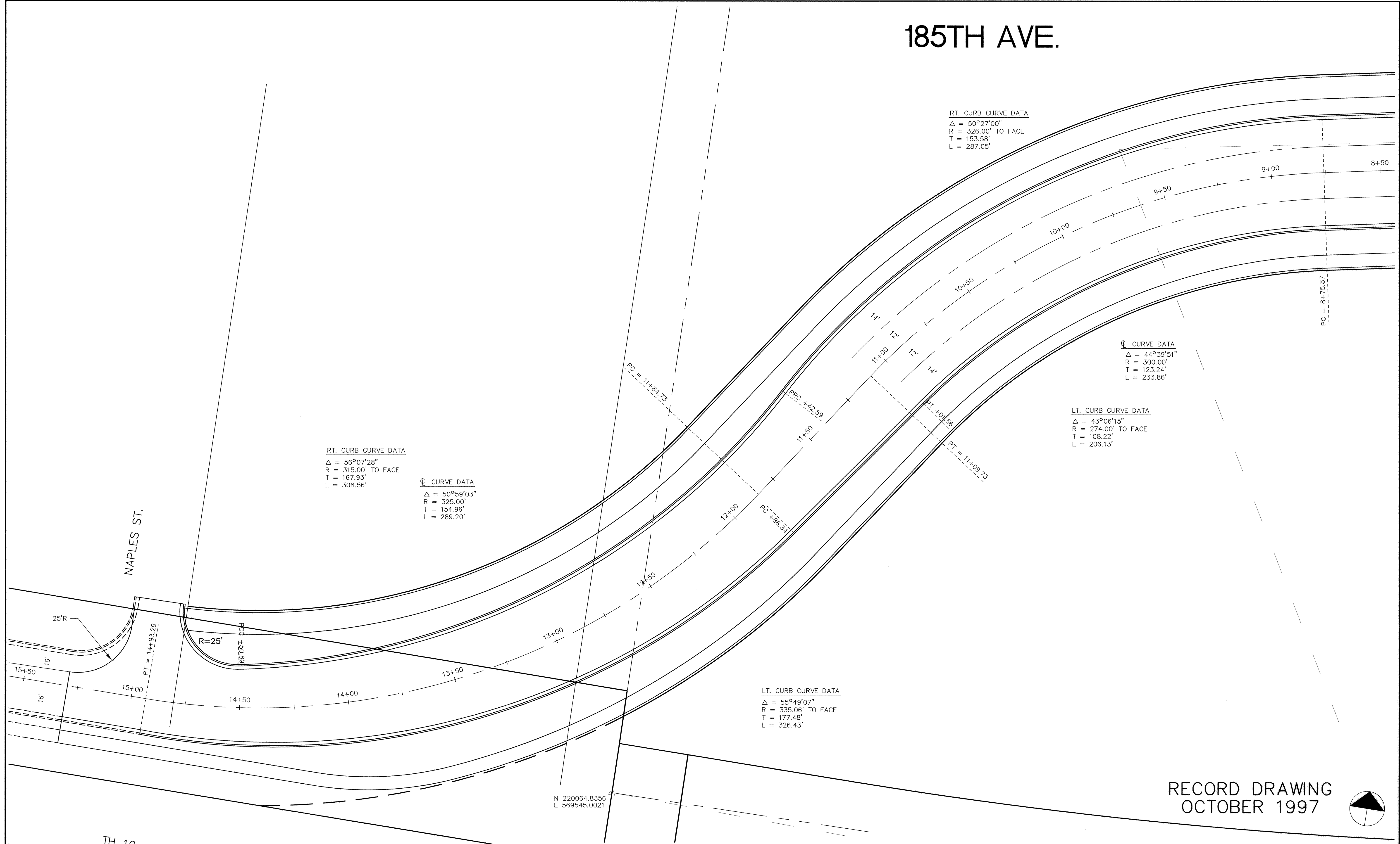


SAVED PRODUCTS • NEW HOPKINS, MINNESOTA  
RENDER BY PART NUMBER 8522

# 185TH AVE.



RT. CURB CURVE DATA  
 $\Delta = 50^{\circ}27'00''$   
 $R = 326.00'$  TO FACE  
 $T = 153.58'$   
 $L = 287.05'$

CL CURVE DATA  
 $\Delta = 44^{\circ}39'51''$   
 $R = 300.00'$   
 $T = 123.24'$   
 $L = 233.86'$

LT. CURB CURVE DATA  
 $\Delta = 43^{\circ}06'15''$   
 $R = 274.00'$  TO FACE  
 $T = 108.22'$   
 $L = 206.13'$

RT. CURB CURVE DATA  
 $\Delta = 56^{\circ}07'28''$   
 $R = 315.00'$  TO FACE  
 $T = 167.93'$   
 $L = 308.56'$

CL CURVE DATA  
 $\Delta = 50^{\circ}59'03''$   
 $R = 325.00'$   
 $T = 154.96'$   
 $L = 289.20'$

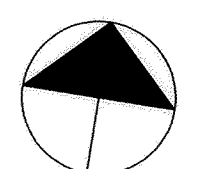
LT. CURB CURVE DATA  
 $\Delta = 55^{\circ}49'07''$   
 $R = 335.06'$  TO FACE  
 $T = 177.48'$   
 $L = 326.43'$

NAPLES ST.

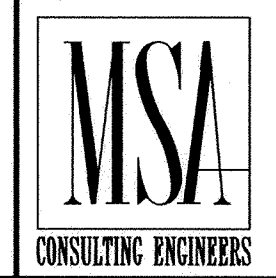
TH 10

N 220064.8356  
E 569545.0021

RECORD DRAWING  
OCTOBER 1997



I HEREBY CERTIFY THAT THIS PLAN, SPECIFICATION, OR REPORT WAS PREPARED BY ME OR UNDER MY DIRECT SUPERVISION AND THAT I AM A DULY REGISTERED PROFESSIONAL ENGINEER UNDER THE LAWS OF THE STATE OF MINNESOTA.  
*Kevin J. Mann*  
 DATE 3/21/96 REG. NO. 15316



1326 ENERGY PARK DRIVE  
 ST. PAUL, MINNESOTA 55108  
 (612) 644-4389  
 5075 WAYZATA BLVD. SUITE #225  
 MINNEAPOLIS, MINNESOTA 55416  
 (612) 546-0432

DATE	DESCRIPTION	DESIGNED

CHECKED	
DRAWN	

GRAPHIC SCALE	
0 20	
0 VERT. N/A	

CITY OF ELK RIVER 185TH AVENUE / TRUNK HIGHWAY 10		
CURVE DATA PLAN		
S.P. 7102-87(TH 10)		
DATE JAN 1996	SHEET 12 OF 41 SHEETS	PROJECT NO. 230-277