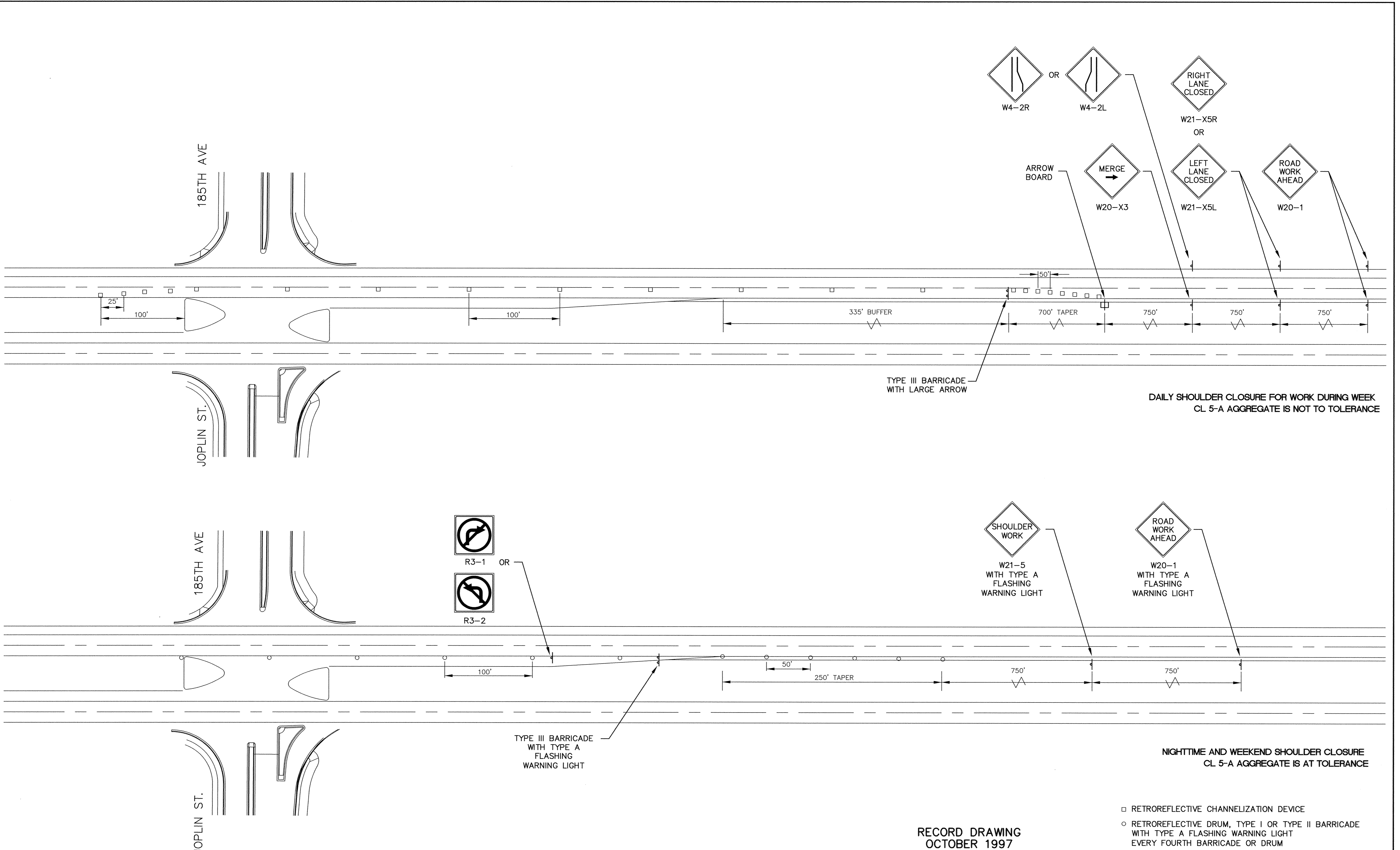


SDCO PRODUCTS • NEW HARBOR, MINNESOTA
REORDER BY PART NUMBER 6532
SDCO PRODUCTS • NEW HARBOR, MINNESOTA
REORDER BY PART NUMBER 6532
SDCO PRODUCTS • NEW HARBOR, MINNESOTA
REORDER BY PART NUMBER 6532
SDCO PRODUCTS • NEW HARBOR, MINNESOTA
REORDER BY PART NUMBER 6532



DAILY SHOULDER CLOSURE FOR WORK DURING WEEK
CL 5-A AGGREGATE IS NOT TO TOLERANCE

NIGHTTIME AND WEEKEND SHOULDER CLOSURE
CL 5-A AGGREGATE IS AT TOLERANCE

- RETROREFLECTIVE CHANNELIZATION DEVICE
- RETROREFLECTIVE DRUM, TYPE I OR TYPE II BARRICADE WITH TYPE A FLASHING WARNING LIGHT EVERY FOURTH BARRICADE OR DRUM

RECORD DRAWING
OCTOBER 1997

I HEREBY CERTIFY THAT THIS PLAN, SPECIFICATION, OR REPORT WAS PREPARED BY ME OR UNDER MY DIRECT SUPERVISION AND THAT I AM A DULY REGISTERED PROFESSIONAL ENGINEER UNDER THE LAWS OF THE STATE OF MINNESOTA.

Scott J. Maurer
DATE 3/21/94 REG. NO. 15314



1326 ENERGY PARK DRIVE
ST. PAUL, MINNESOTA 55108
(612) 644-4389

5075 WAYZATA BLVD. SUITE #225
MINNEAPOLIS, MINNESOTA 55416
(612) 546-0432

REVISIONS	DATE	DESCRIPTION	DESIGNED	SF
	3/22/96	PER MNDOT REVIEW	CHECKED	
			DRAWN	

GRAPHIC SCALE
NOT TO SCALE
0 VERT. N/A

CITY OF ELK RIVER TRUNK HIGHWAY 10	
LANE CLOSURE SIGNING	
S.P. 7102-87(TH 10)	
DATE JAN 1996	SHEET 8 OF 41 SHEETS
PROJECT NO. 230-277	