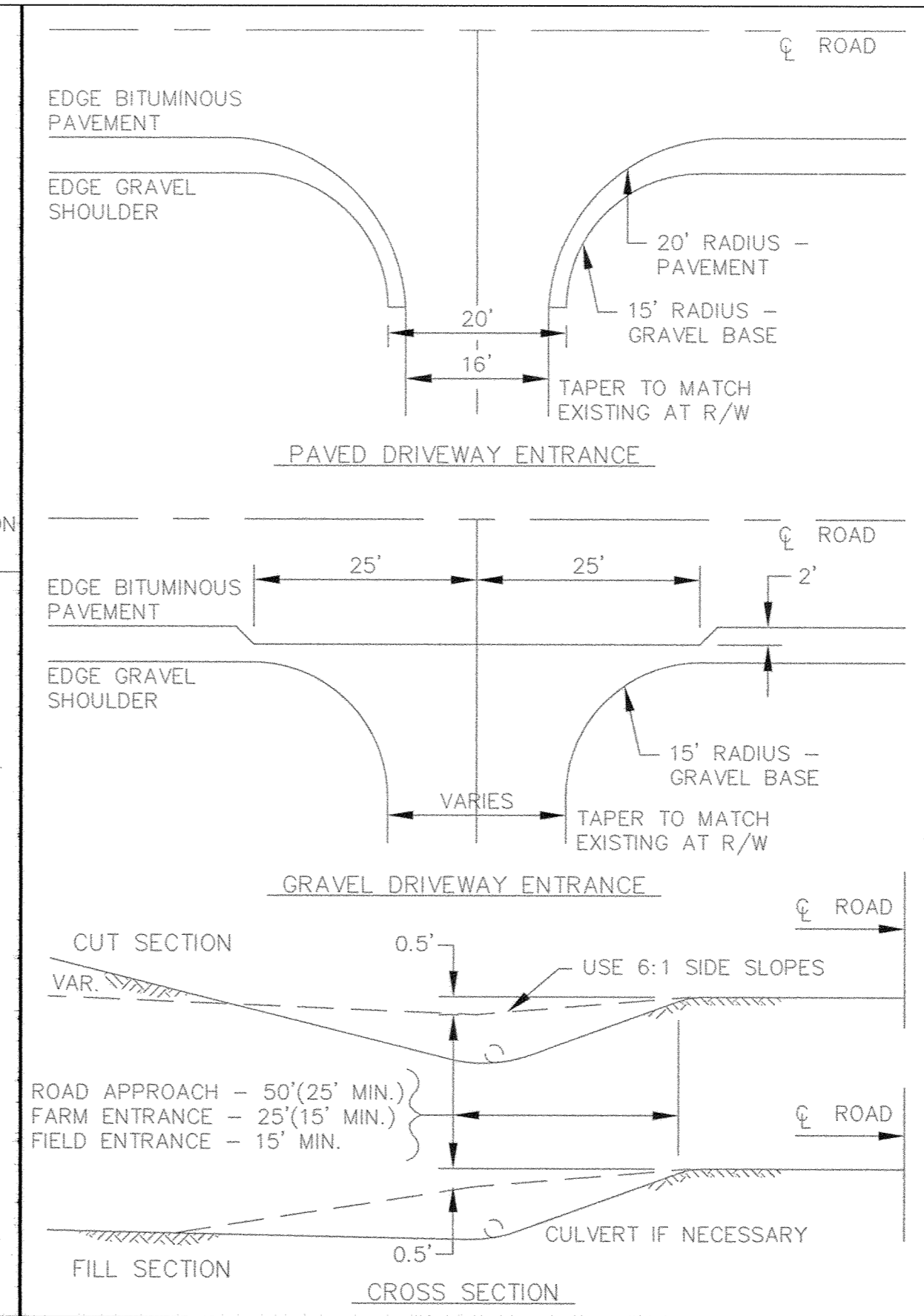


RURAL DRIVEWAY ENTRANCE

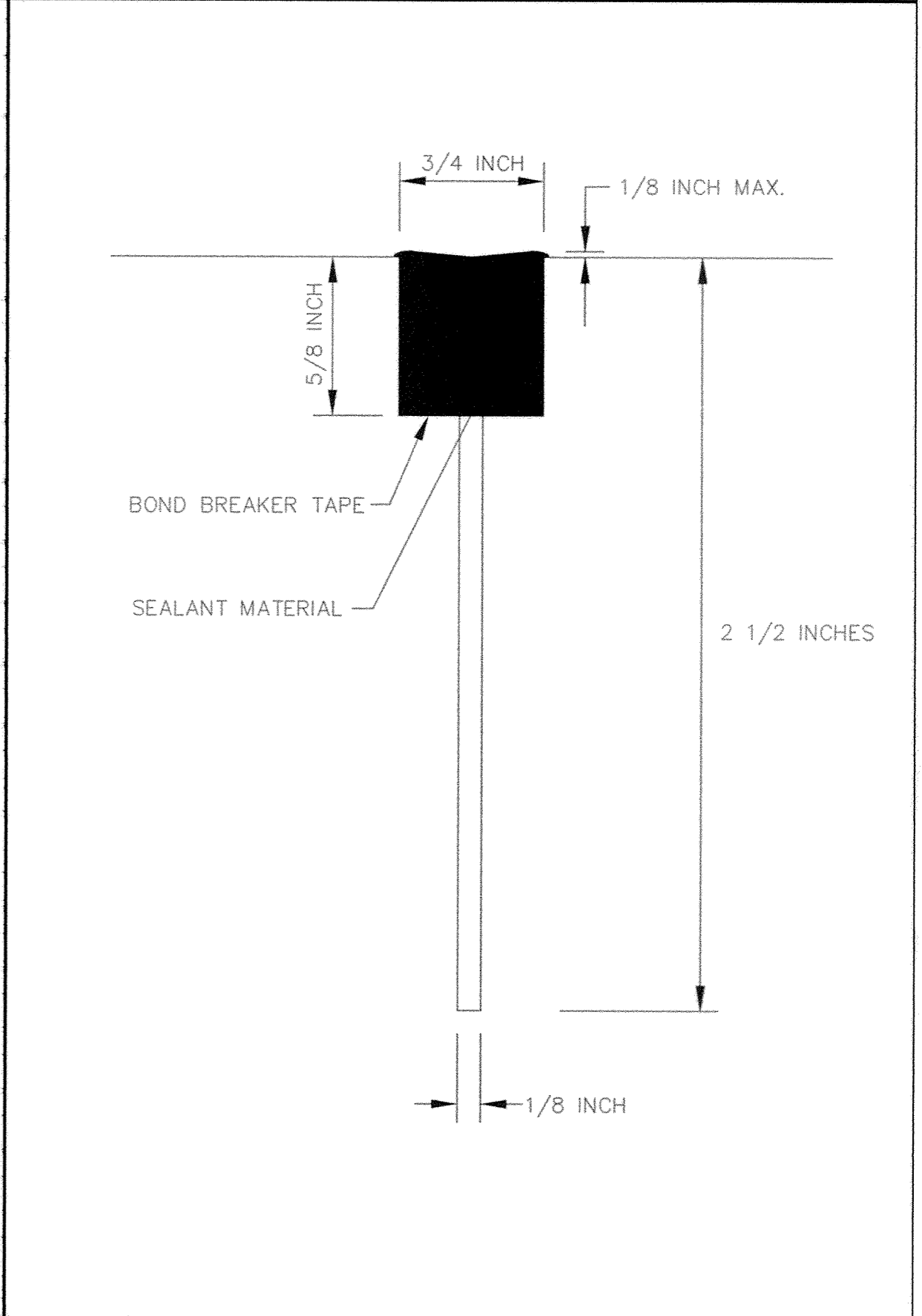
MATCH EXISTING BITUMINOUS SURFACING



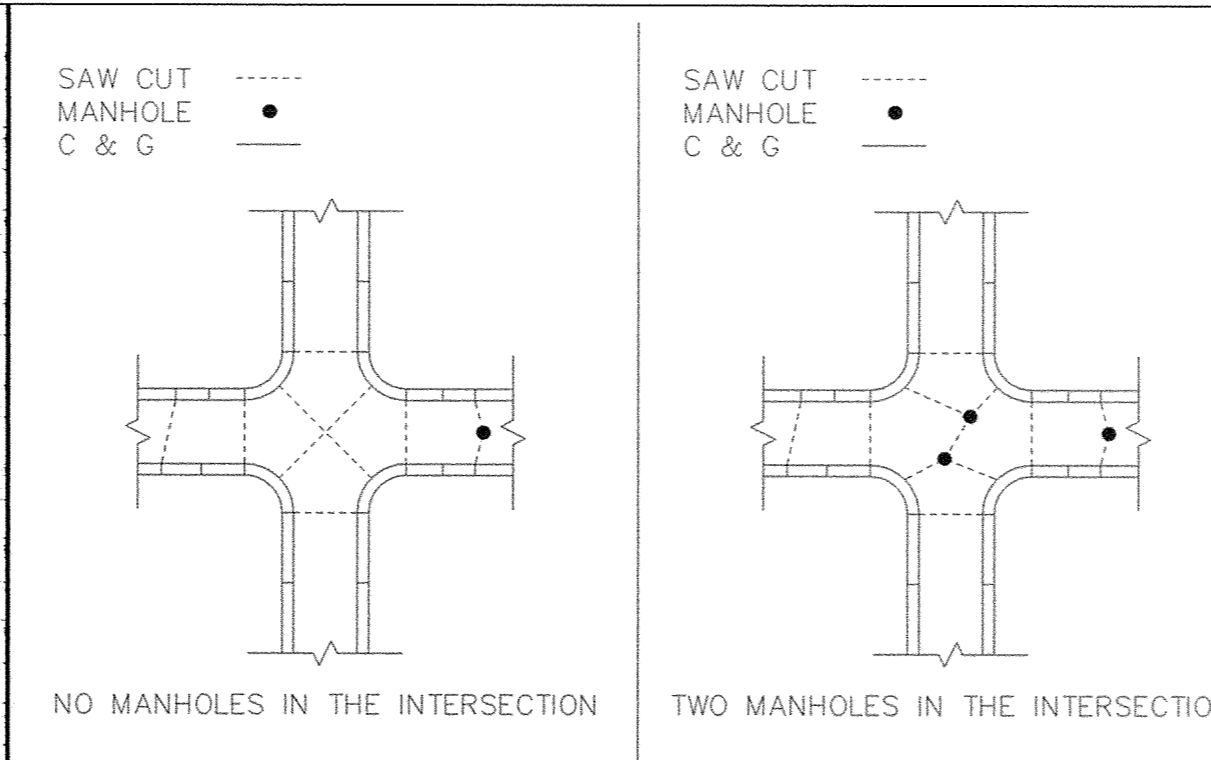
SAW AND SEAL CUTTING

RURAL DRIVEWAY ENTRANCE

MATCH EXISTING BITUMINOUS SURFACING



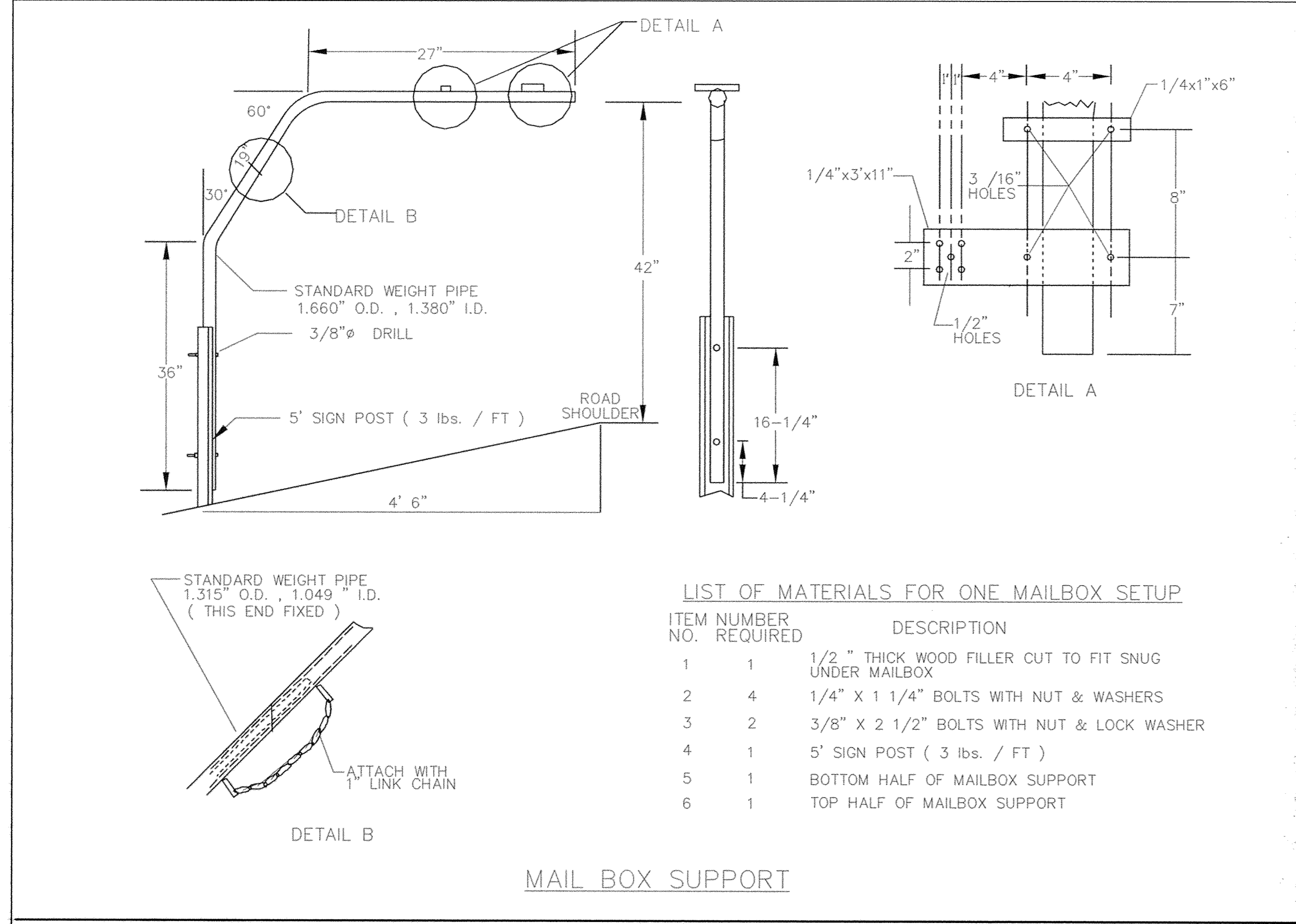
SAW AND SEAL TYPICAL JOINT CONFIGURATION



MAIL BOX SUPPORT

LIST OF MATERIALS FOR ONE MAILBOX SETUP

ITEM NO.	NO. REQUIRED	DESCRIPTION
1	1	1/2" THICK WOOD FILLER CUT TO FIT SNUG UNDER MAILBOX
2	4	1/4" X 1 1/4" BOLTS WITH NUT & WASHERS
3	2	3/8" X 2 1/2" BOLTS WITH NUT & LOCK WASHER
4	1	5' SIGN POST ( 3 lbs. / FT )
5	1	BOTTOM HALF OF MAILBOX SUPPORT
6	1	TOP HALF OF MAILBOX SUPPORT



MAIL BOX



DESIGNED BY: KJT DRAWN BY: RKM  
 APPROVED: TJM JOB NUMBER 806550J  
 CAD DATE: August 23, 2001 1:52:23 p.m.  
 CAD FILE: 806550J\MISC\806550-D2.DWG

I HEREBY CERTIFY THAT THIS PLAN, SPECIFICATION, OR REPORT WAS PREPARED BY ME OR UNDER MY DIRECT SUPERVISION AND THAT I AM A DULY LICENSED PROFESSIONAL ENGINEER UNDER THE LAWS OF THE STATE OF MINNESOTA.  
 DATE: \_\_\_\_\_  
 TERRY J. MAURER LIC. 15316

NO.	DATE	BY	REVISION DESCRIPTION

1326 ENERGY PARK DRIVE  
 ST. PAUL, MINNESOTA 55108  
 (651) 644-4389  
**Howard R. Green Company**  
 CONSULTING ENGINEERS

175TH AVENUE  
 CITY OF ELK RIVER  
 175TH AVENUE

STREET CONSTRUCTION DETAILS  
 S.P. 204-111-04

SHEET NO.  
**40**