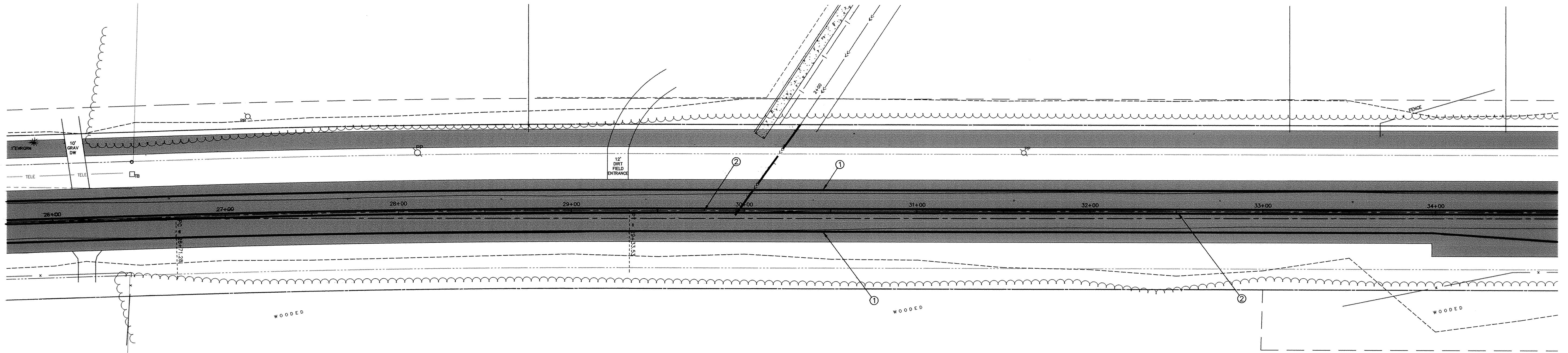
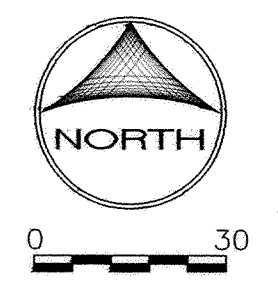
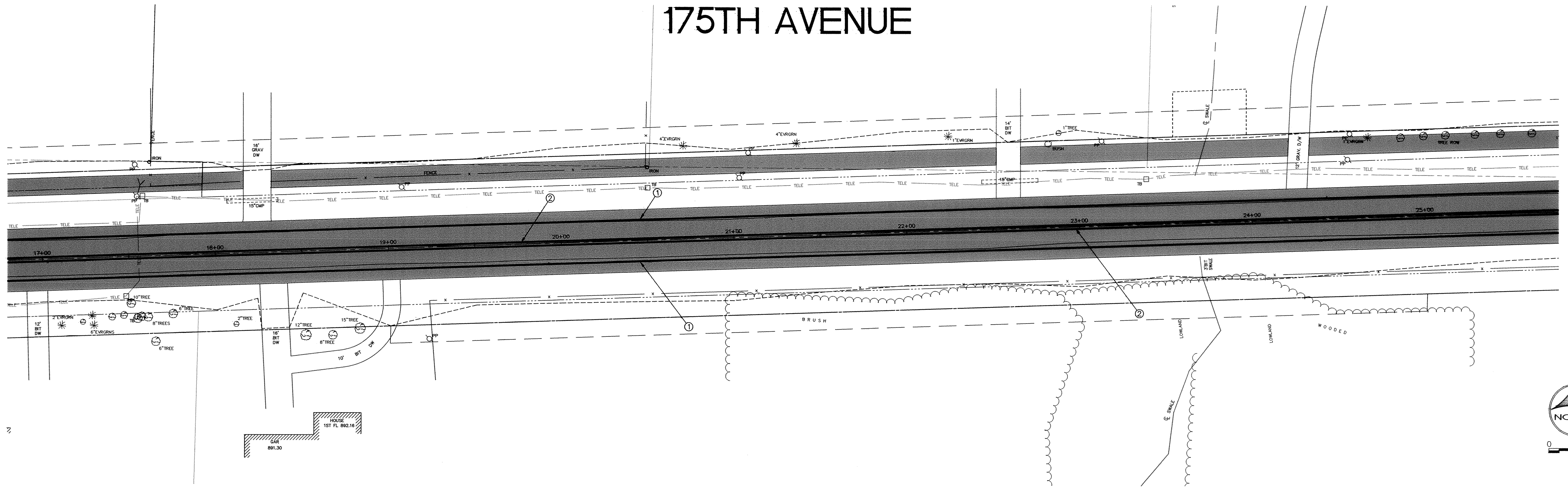


175TH AVENUE



KEY	SYMBOL	WORDING/SYMBOL PLATE CODE	SIZE
A		R1-1	30" x 30"
B		R2-1	24" x 30"

KEY	SYMBOL	WORDING/SYMBOL PLATE CODE	SIZE
C		R3-X1	30" x 30"

KEY	DESCRIPTION	WIDTH	COLOR	REMARKS
①	PAVEMENT EDGE	4"	WHITE	SOLID
②	CENTER STRIPE	4"	YELLOW	SOLID DOUBLE
③	LANE LINE	4"	WHITE	BROKEN

DESIGNED BY: KJT DRAWN BY: RKM
 APPROVED: TJM JOB NUMBER 806550J
 CAD DATE: July 20, 2001 2:31:38 p.m.
 CAD FILE: 806550J\MISC\806550-SS2.DWG

I HEREBY CERTIFY THAT THIS PLAN, SPECIFICATION, OR REPORT WAS PREPARED BY ME OR UNDER MY DIRECT SUPERVISION AND THAT I AM A DULY LICENSED PROFESSIONAL ENGINEER UNDER THE LAWS OF THE STATE OF MINNESOTA.
 DATE: _____
 TERRY J. MAURER LIC. 15316

NO.	DATE	BY	REVISION DESCRIPTION

Howard R. Green Company
 CONSULTING ENGINEERS

1326 ENERGY PARK DRIVE
 ST. PAUL, MINNESOTA 55108
 (651) 644-4389
175TH AVENUE
 CITY OF ELK RIVER
 175TH AVENUE

SIGNING AND STRIPING
 S.P. 204-111-04
 17+00 TO 34+50

SHEET NO.
37