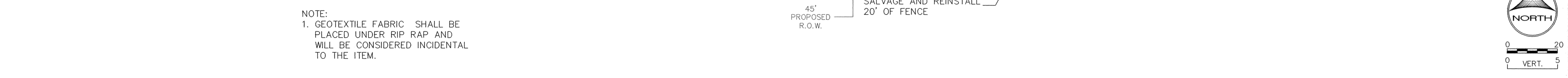
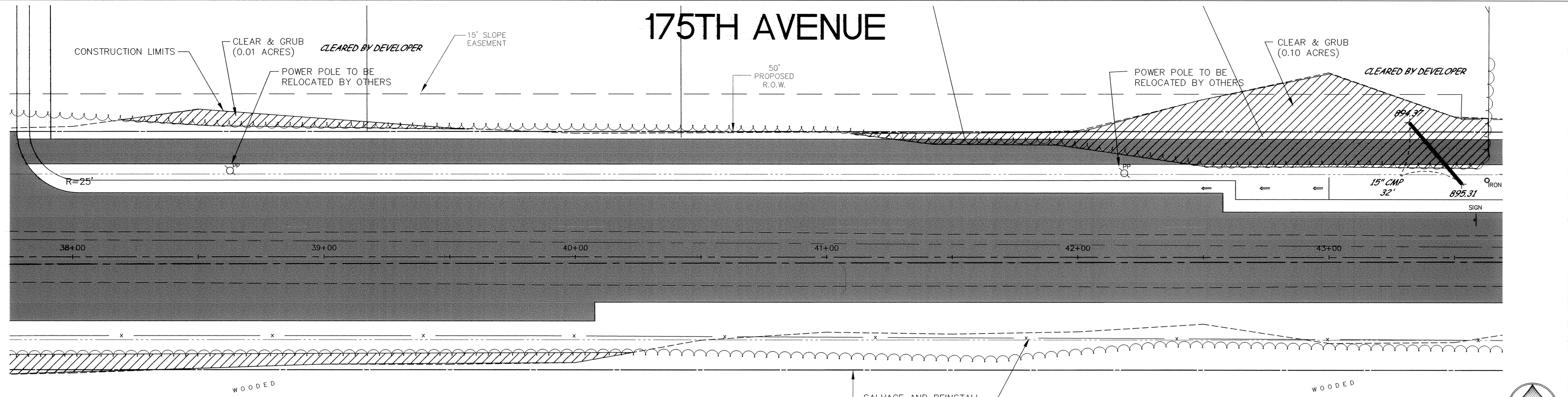
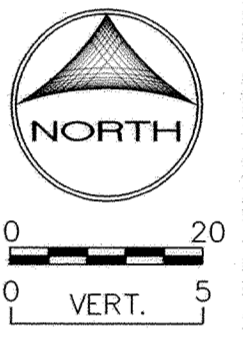


175TH AVENUE



NOTE:
1. GEOTEXTILE FABRIC SHALL BE PLACED UNDER RIP RAP AND WILL BE CONSIDERED INCIDENTAL TO THE ITEM.

45' PROPOSED R.O.W.
SALVAGE AND REINSTALL 20' OF FENCE



910	899.1 898.00	898.6 897.75	898.2 897.50	897.8 897.25	897.3 897.00	896.9 896.75	896.6 896.50	896.2 896.25	896.0 896.01	895.8	895.5 895.70	895.3	895.2 895.66	895.2	895.3 895.88	895.6	896.0 896.36	896.4 896.69	896.9 897.02	897.4 897.36	897.9 897.70	898.3 898.04	898.7 898.37	910	
905																									905
900																									900
895																									895
890																									890
885																									885
880																									880
875																									875
870																									870
865	38+00	38+50	39+00	39+50	40+00	40+50	41+00	41+50	42+00	42+50	43+00	865													865

**RECORD PLAN
JANUARY 2005**

DESIGNED BY: KJT DRAWN BY: RKM
APPROVED: TJM JOB NUMBER 806550J
CAD DATE: January 28, 2005 10:57:57 a.m.
CAD FILE: 806550J\AS-BUILT\08N_R14.DWG (JCUNNIN)

I HEREBY CERTIFY THAT THIS PLAN, SPECIFICATION, OR REPORT WAS PREPARED BY ME OR UNDER MY DIRECT SUPERVISION AND THAT I AM A DULY LICENSED PROFESSIONAL ENGINEER UNDER THE LAWS OF THE STATE OF MINNESOTA.
DATE: 2/2/05
JOHN M. ANDERSON LIC. 25889

NO.	DATE	BY	REVISION DESCRIPTION
1	7/9/02	EY	CONSTRUCTION LIMITS

1326 ENERGY PARK DRIVE
ST. PAUL, MINNESOTA 55108
(651) 644-4389
Howard R. Green Company
CONSULTING ENGINEERS

175TH AVENUE
CITY OF ELK RIVER
175TH AVENUE

STREET IMPROVEMENTS
S.P. 204-111-04
38+00 TO 43+50

SHEET NO.
15

DRAWING NUMBER 175AV_05 15
SACD PRODUCTS • NEW HOPE, MINNESOTA
REVISIONS BY PART NUMBER 806550J
PROFESSIONAL ENGINEER UNDER THE LAWS OF THE STATE OF MINNESOTA
LIC. 25889