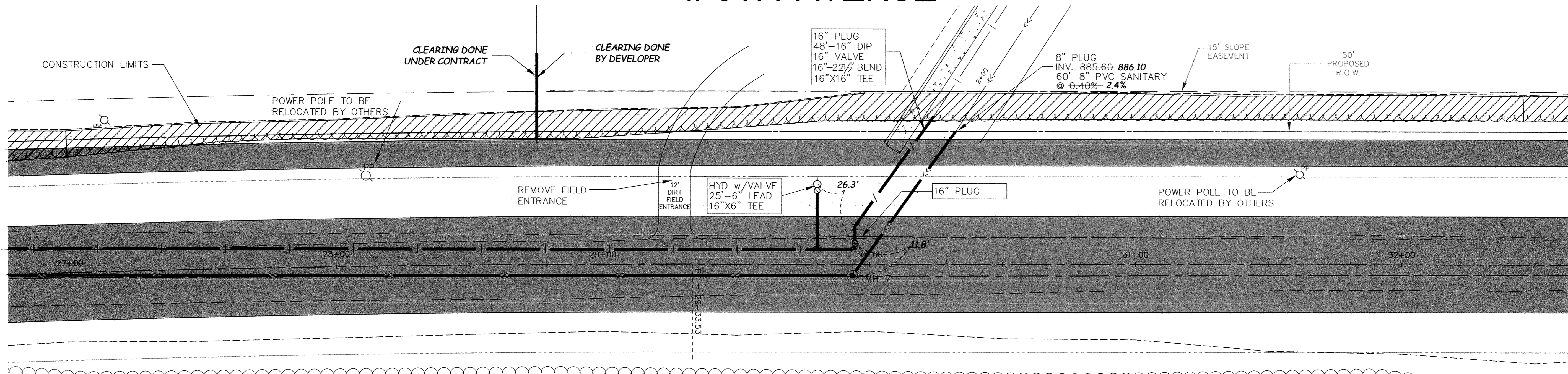
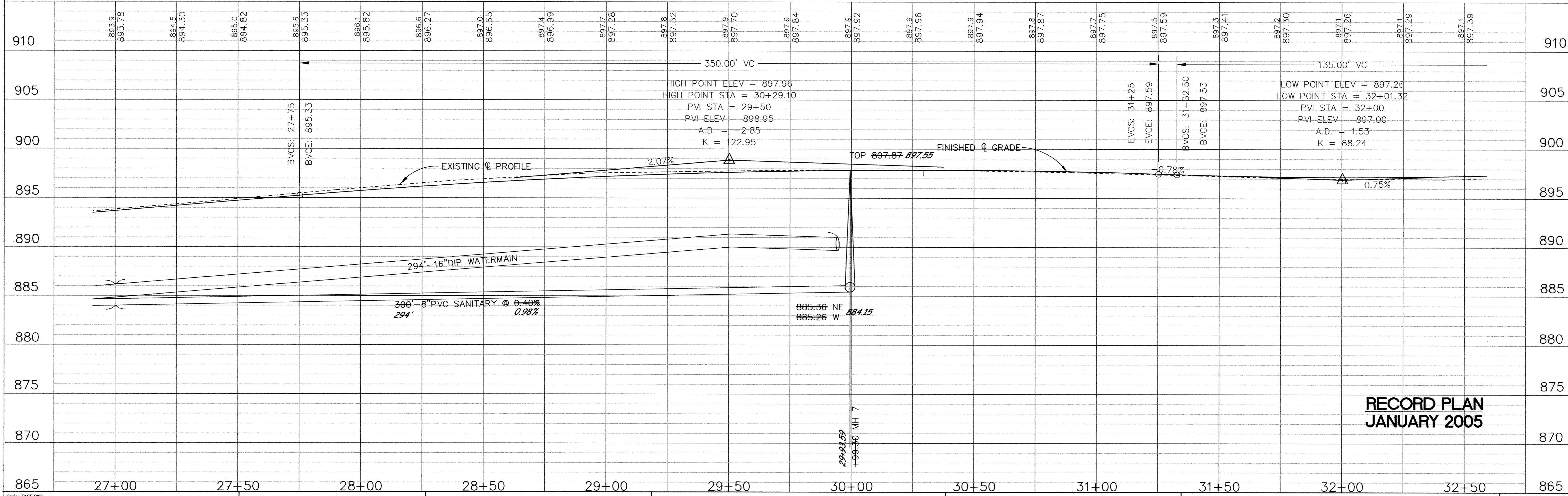
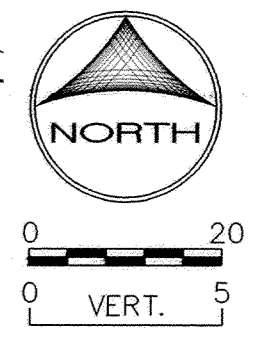


# 175TH AVENUE



△ CURVE DATA  
 △ = 01°52'42"  
 R = 8000.00'  
 L = 262.25'

NOTE:  
 1. GEOTEXTILE FABRIC SHALL BE PLACED UNDER RIP RAP AND WILL BE CONSIDERED INCIDENTAL TO THE ITEM.



**RECORD PLAN  
 JANUARY 2005**

DESIGNED BY: KJT DRAWN BY: RKM  
 APPROVED: TJM JOB NUMBER 806550J  
 CAD DATE: January 28, 2005 10:50:16 a.m.  
 CAD FILE: 806550J\AS-BUILT\06N\_R14.DWG (JCUNNIN)

I HEREBY CERTIFY THAT THIS PLAN, SPECIFICATION, OR REPORT WAS PREPARED BY ME OR UNDER MY DIRECT SUPERVISION AND THAT I AM A DULY LICENSED PROFESSIONAL ENGINEER UNDER THE LAWS OF THE STATE OF MINNESOTA.  
 JOHN M. ANDERSON LIC. 25889 DATE 2/2/05

NO.	DATE	BY	REVISION DESCRIPTION
1	7/05/02	EY	SANITARY SEWER, WATERMAIN

1326 ENERGY PARK DRIVE  
 ST. PAUL, MINNESOTA 55108  
 (651) 644-4389  
**Howard R. Green Company**  
 CONSULTING ENGINEERS

**175TH AVENUE**  
 CITY OF ELK RIVER  
 175TH AVENUE

SP. 204-111-04  
**STREET IMPROVEMENTS**  
 27+00 TO 32+50

SHEET NO.  
**13**