

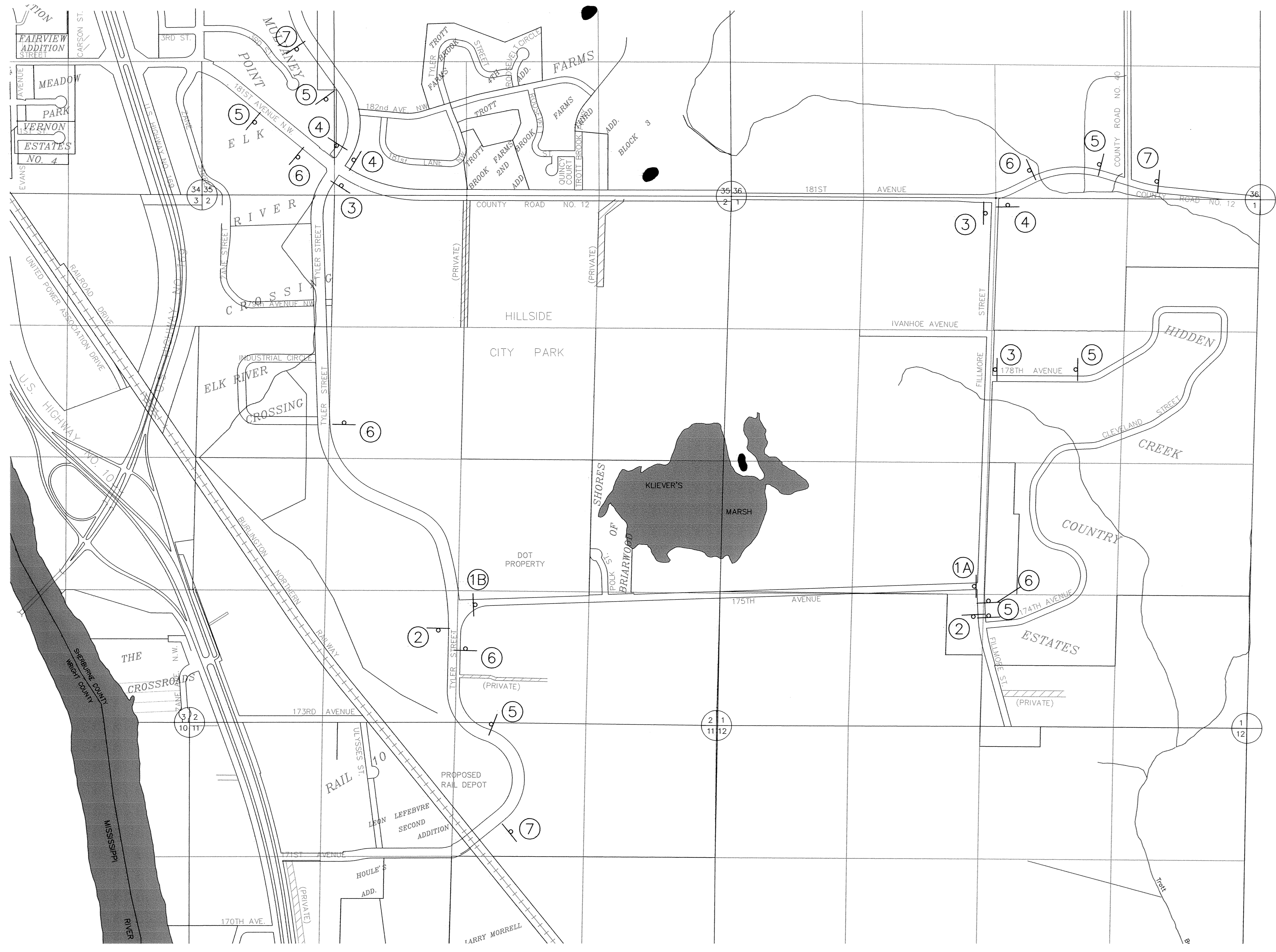
GENERAL DETOUR NOTES:

- 1) BARRICADES SHALL BE TYPE III AND SHALL BE CONSTRUCTED OF LIGHT MATERIAL (SEE STANDARD PLATE 8000I FOR RECOMMENDED SUPPORT).
- 2) THE ACTUAL NUMBER OF BARRICADES AT EACH LOCATION REQUIRED MAY VARY DEPENDING UPON THE SIZE OF BARRICADES USED, THE WIDTH OF THE ROAD CLOSURE AND THE MOVEMENT OF LOCAL AND CONSTRUCTION TRAFFIC.
- 3) ALL TRAFFIC CONTROL DEVICES SHALL CONFORM TO THE REQUIREMENTS OF THE MINNESOTA MANUAL ON UNIFORM TRAFFIC CONTROL DEVICES, INCLUDING FIELD MANUAL FOR TEMPORARY TRAFFIC CONTROL ZONE LAYOUTS, DATED JANUARY 2001 AND THE MINNESOTA STANDARD SIGNS MANUAL.
- 4) ALL SIGN POSTS USED TO POST DETOUR ROUTES SHALL BE REMOVED AND THE SURROUNDING GROUND RETURNED TO ITS ORIGINAL CONDITION WHEN DETOUR IS TAKEN OFF THAT STREET.
- 5) ALL SIGNS PROVIDED BY THE CONTRACTOR FOR TRAFFIC CONTROL DURING CONSTRUCTION SHALL REMAIN PROPERTY OF THE CONTRACTOR AND SHALL BE REMOVED FROM THE JOB SITE WHEN THEY ARE NO LONGER NEEDED.
- 6) ALL TRAFFIC CONTROL DEVICES SHALL HAVE WIDE ANGLE PRISMATIC SHEETING.
- 7) WHERE TRAFFIC MAY APPROACH THE BARRICADE FROM EITHER SIDE, THE BARRICADE SHOULD BE REFLECTORIZED ON BOTH SIDES OR TWO BARRICADES, BACK TO BACK, SHOULD BE USED TO PROVIDE VISIBILITY.



RECORD PLAN  
JANUARY 2005

0 500



DESIGNED BY: KJT DRAWN BY: RKM  
 APPROVED: TJM JOB NUMBER 806550J  
 CAD DATE: January 28, 2005 10:32:35 a.m.  
 CAD FILE: 806550J\AS-BUILT\MISC\806550-DETOUR.DWG

I HEREBY CERTIFY THAT THIS PLAN, SPECIFICATION, OR REPORT WAS PREPARED BY ME OR UNDER MY DIRECT SUPERVISION AND THAT I AM A DULY LICENSED PROFESSIONAL ENGINEER UNDER THE LAWS OF THE STATE OF MINNESOTA.  
 DATE: \_\_\_\_\_  
 JOHN M. ANDERSON LIC. 25889

NO.	DATE	BY	REVISION DESCRIPTION

1326 ENERGY PARK DRIVE  
 ST. PAUL, MINNESOTA 55108  
 (651) 644-4389  
**Howard R. Green Company**  
 CONSULTING ENGINEERS

175TH AVENUE  
 CITY OF ELK RIVER  
 175TH AVENUE

DETOUR PLAN  
 S.P. 204-111-04

SHEET NO.  
**7**