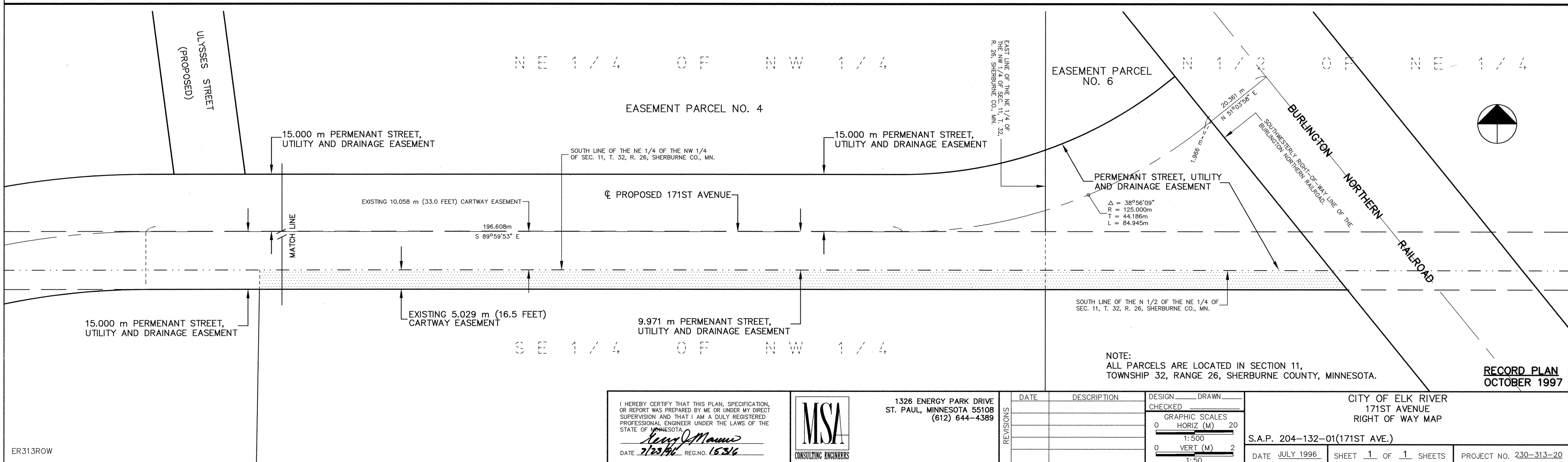
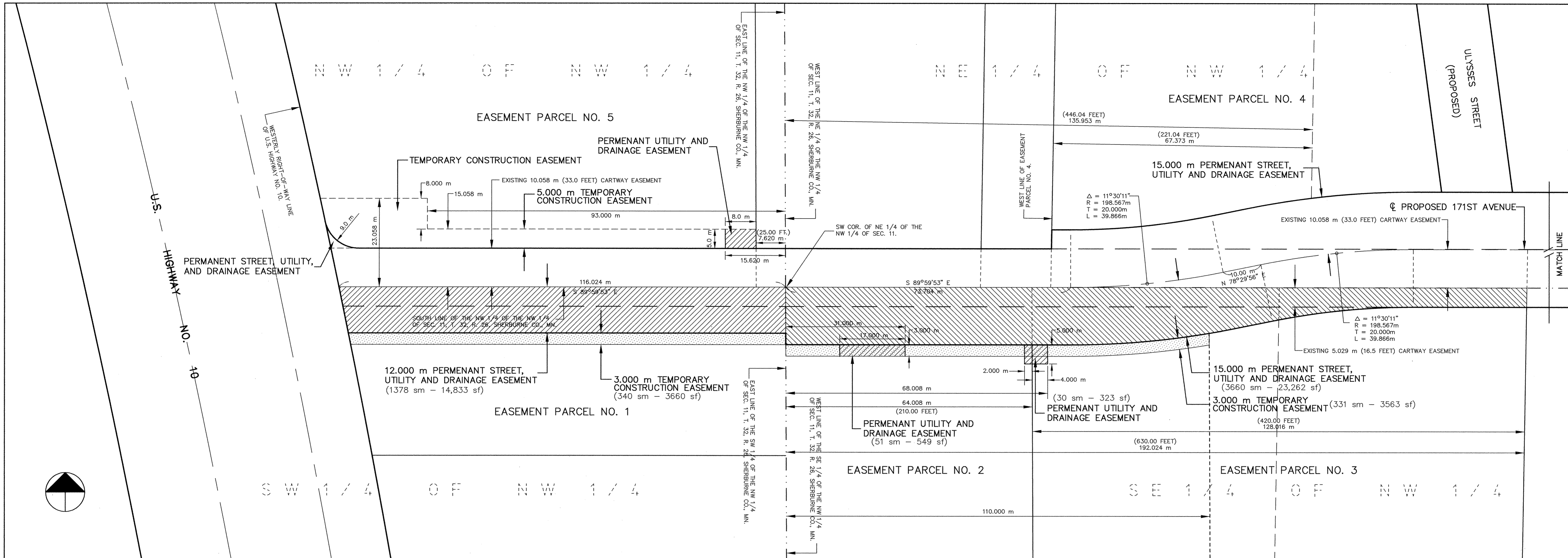


SACCO PRODUCTS • NEW HOPE, MINNESOTA
DESIGNED BY PART NUMBER 6522
REVISIONS BY PART NUMBER 6522
SACCO PRODUCTS • NEW HOPE, MINNESOTA
DESIGNED BY PART NUMBER 6522
REVISIONS BY PART NUMBER 6522
SACCO PRODUCTS • NEW HOPE, MINNESOTA
DESIGNED BY PART NUMBER 6522
REVISIONS BY PART NUMBER 6522



ER313ROW

I HEREBY CERTIFY THAT THIS PLAN, SPECIFICATION, OR REPORT WAS PREPARED BY ME OR UNDER MY DIRECT SUPERVISION AND THAT I AM A DULY REGISTERED PROFESSIONAL ENGINEER UNDER THE LAWS OF THE STATE OF MINNESOTA.

Henry J. Mann
DATE 7/23/96 REG. NO. 16216

MSA CONSULTING ENGINEERS

1326 ENERGY PARK DRIVE
ST. PAUL, MINNESOTA 55108
(612) 644-4389

DATE	DESCRIPTION	DESIGN	DRAWN

GRAPHIC SCALES
0 HORIZ (M) 20
1:500
0 VERT (M) 2
1:50

CITY OF ELK RIVER
171ST AVENUE
RIGHT OF WAY MAP
S.A.P. 204-132-01(171ST AVE.)
DATE JULY 1996 SHEET 1 OF 1 SHEETS PROJECT NO. 230-313-20

RECORD PLAN
OCTOBER 1997

1180