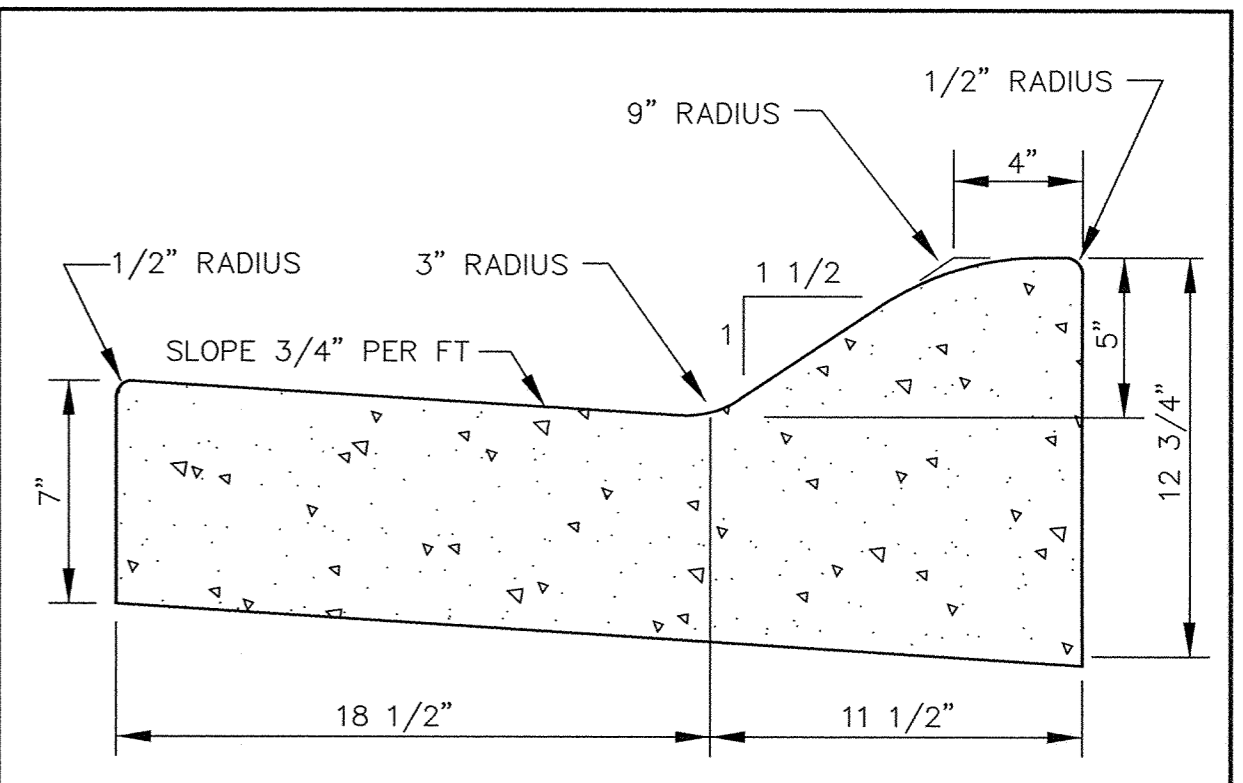


SARCO PRODUCTS • NEW HOPE, MINNESOTA
REPRODUCED BY PART NUMBER 8032

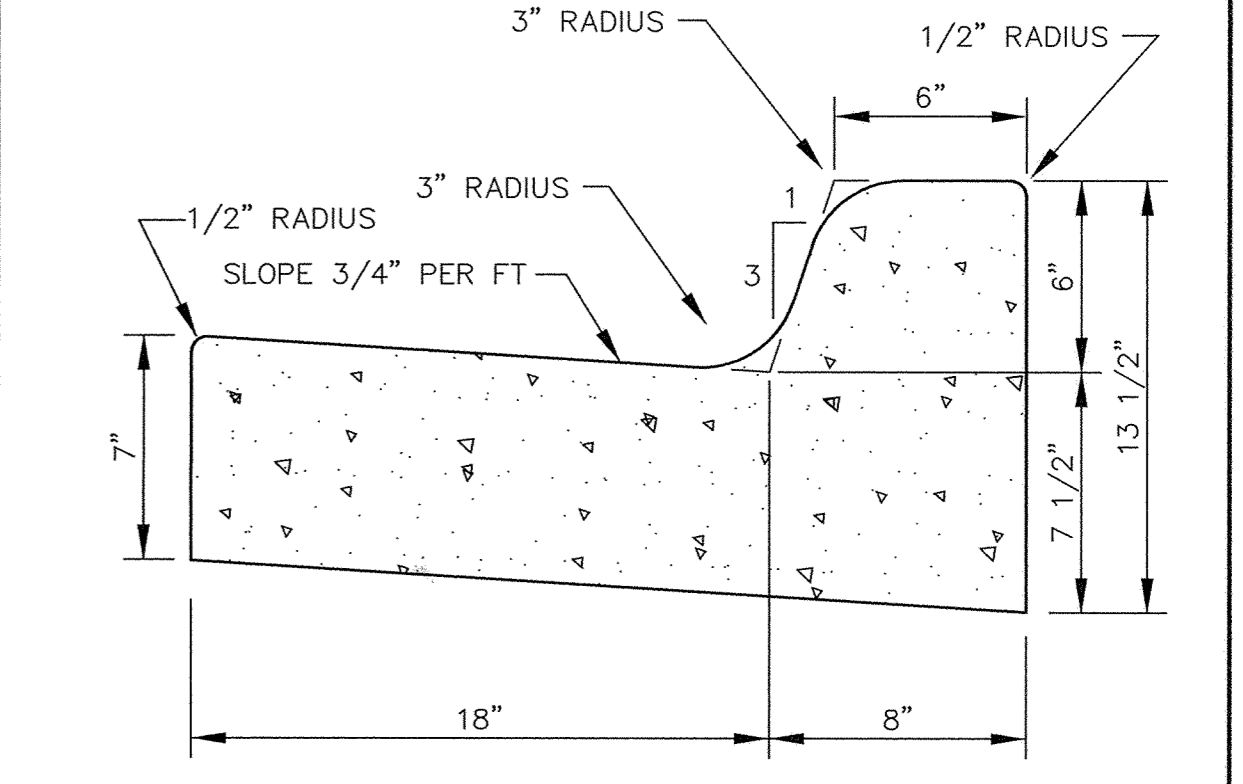
SARCO PRODUCTS • NEW HOPE, MINNESOTA
REPRODUCED BY PART NUMBER 8032

SARCO PRODUCTS • NEW HOPE, MINNESOTA
REPRODUCED BY PART NUMBER 8032

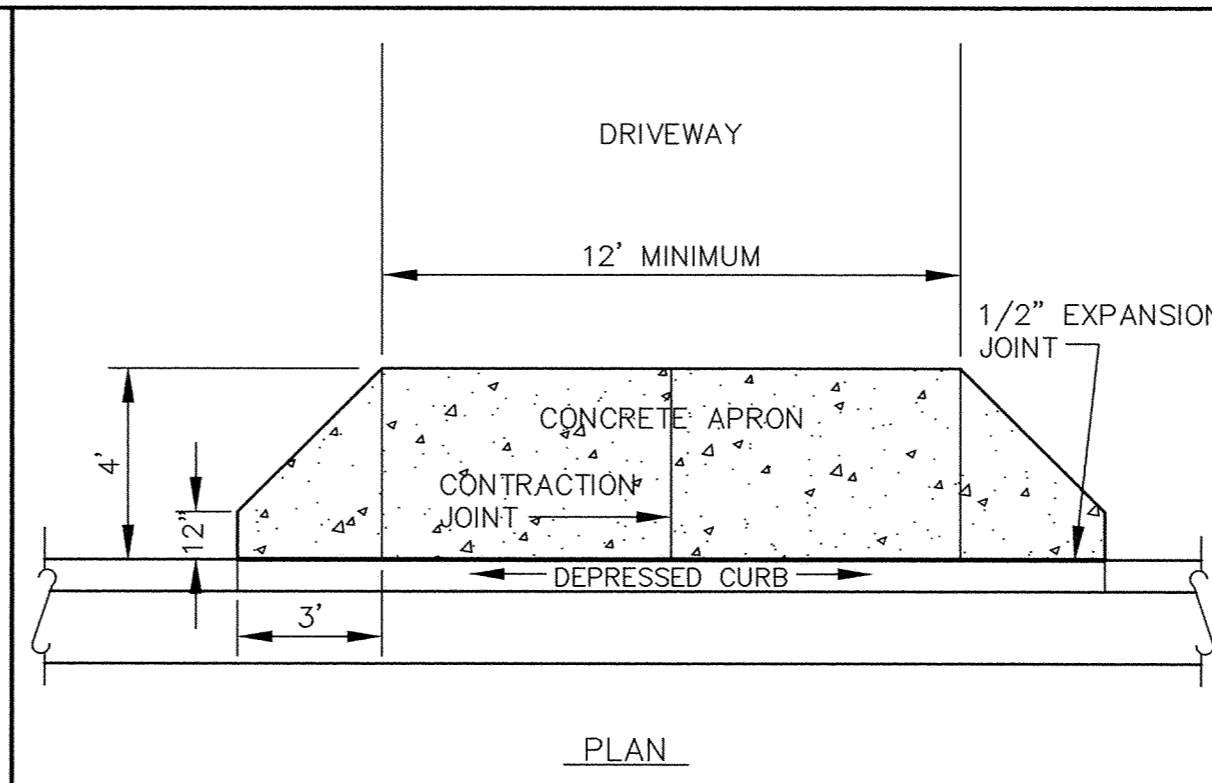
SARCO PRODUCTS • NEW HOPE, MINNESOTA
REPRODUCED BY PART NUMBER 8032



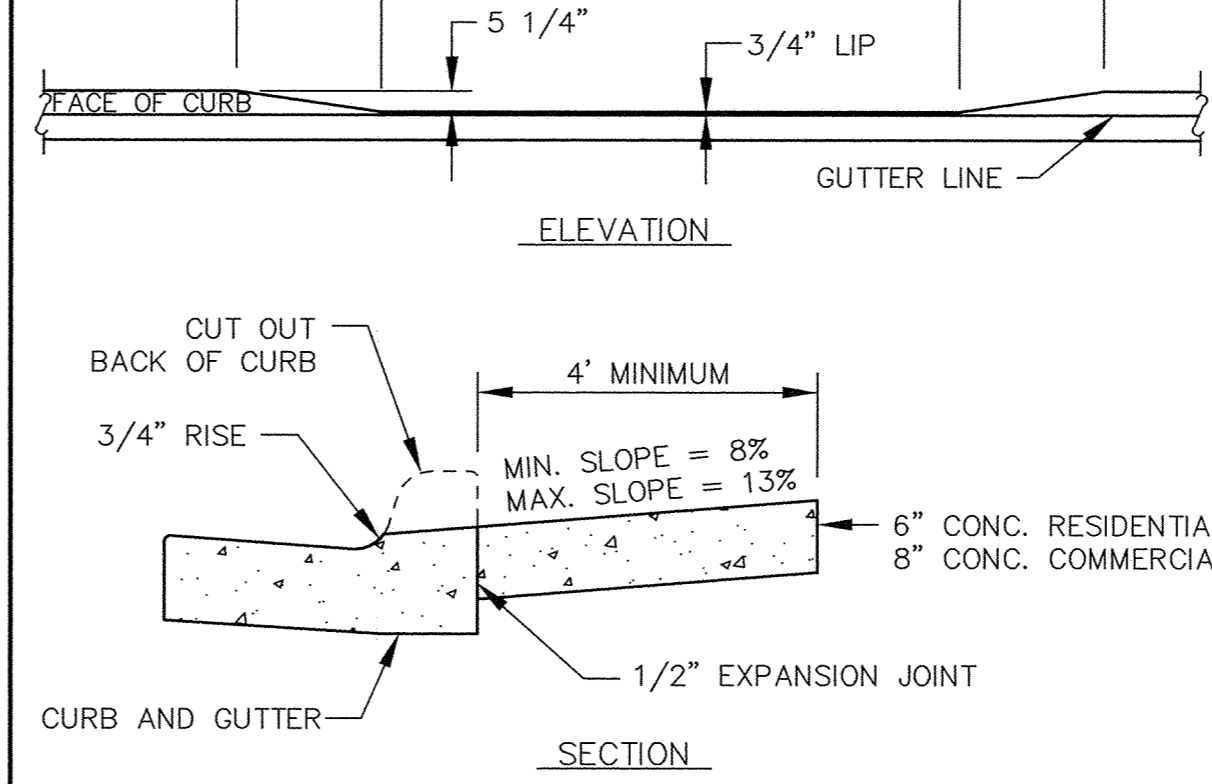
CONCRETE CURB AND GUTTER S518



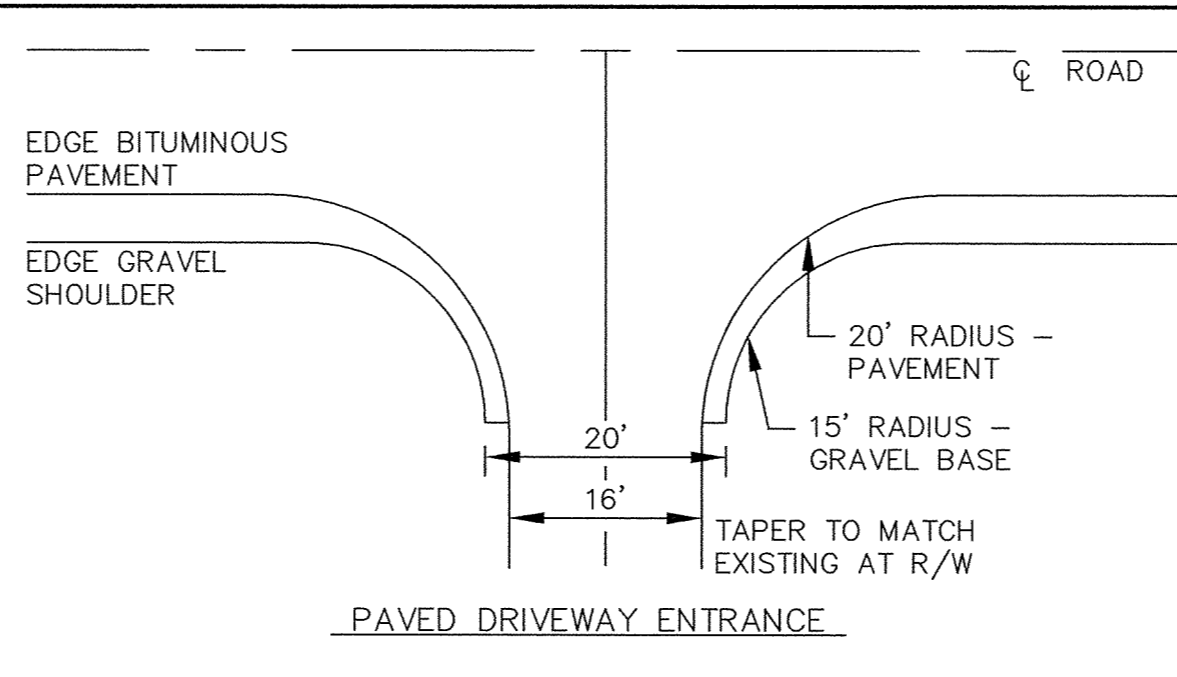
CONCRETE CURB AND GUTTER B618



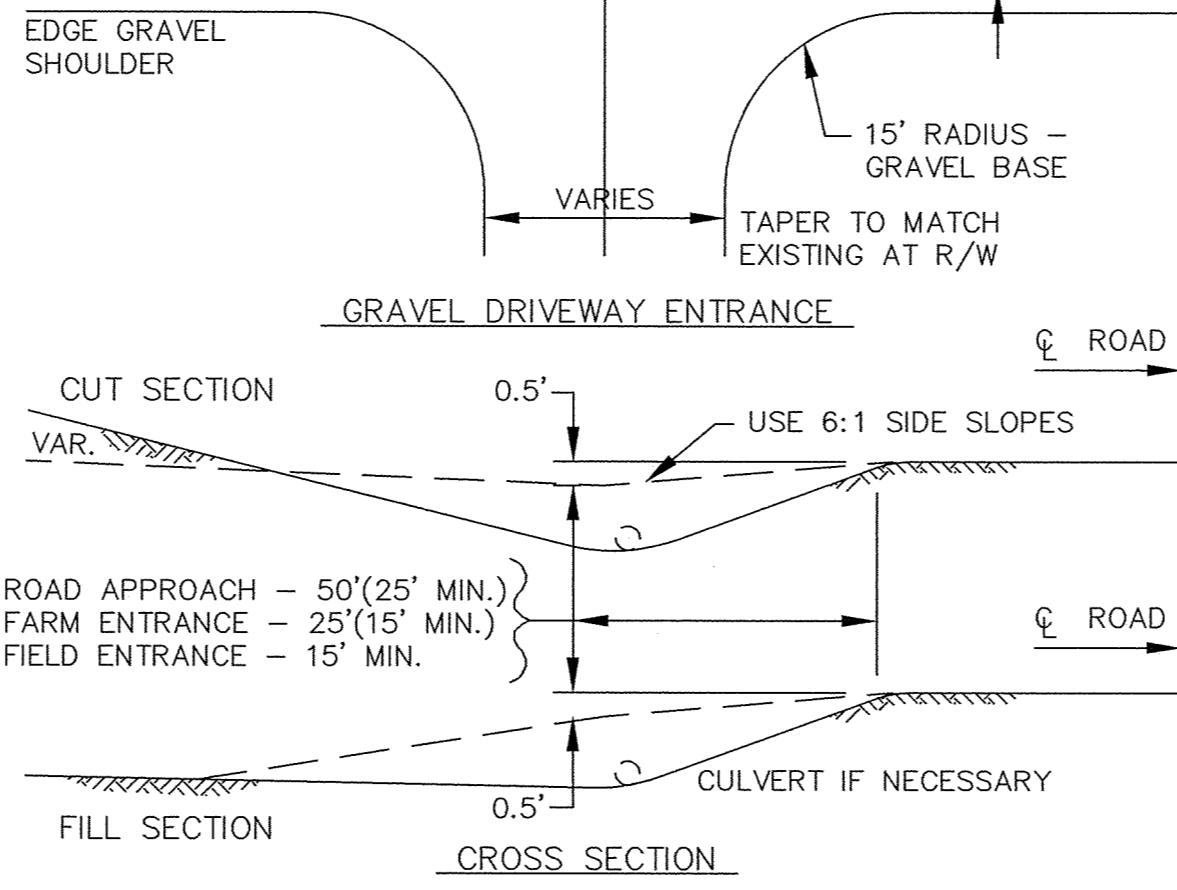
DEPRESSED CURB WITH DRIVEWAY APRON



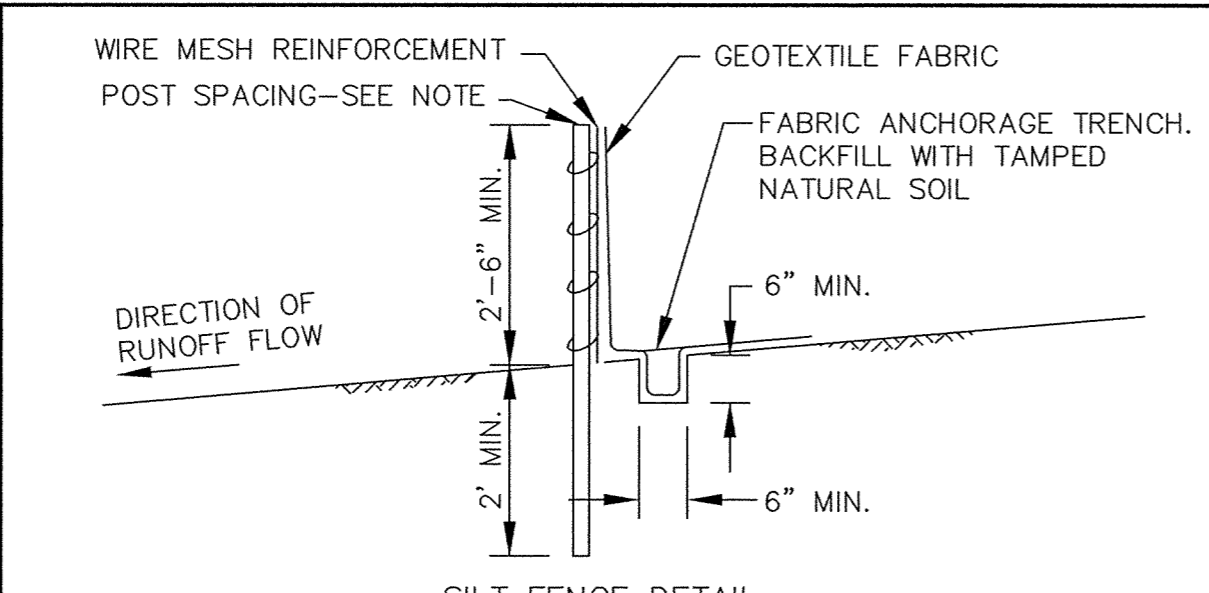
DEPRESSED CURB WITH DRIVEWAY APRON



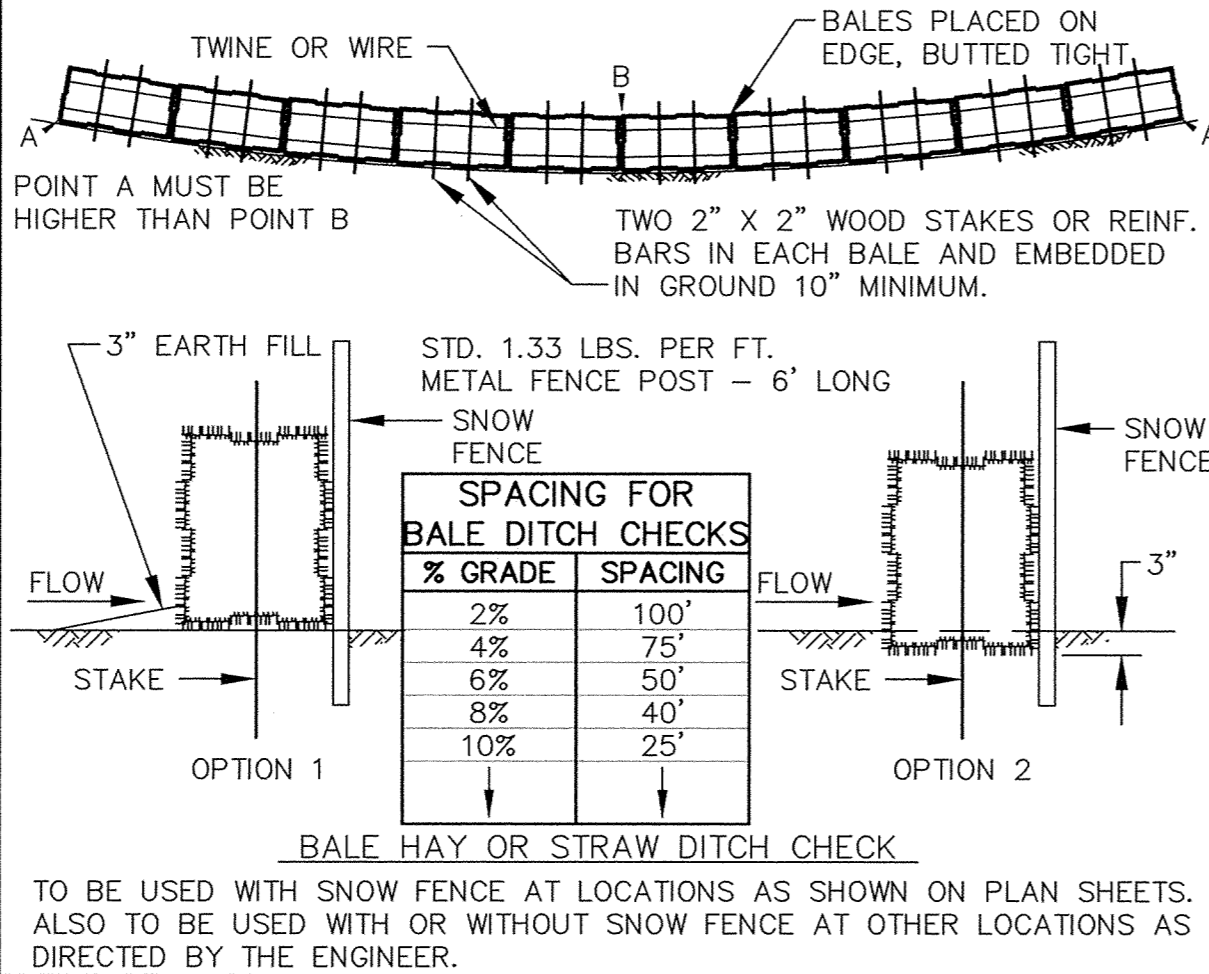
RURAL DRIVEWAY ENTRANCE



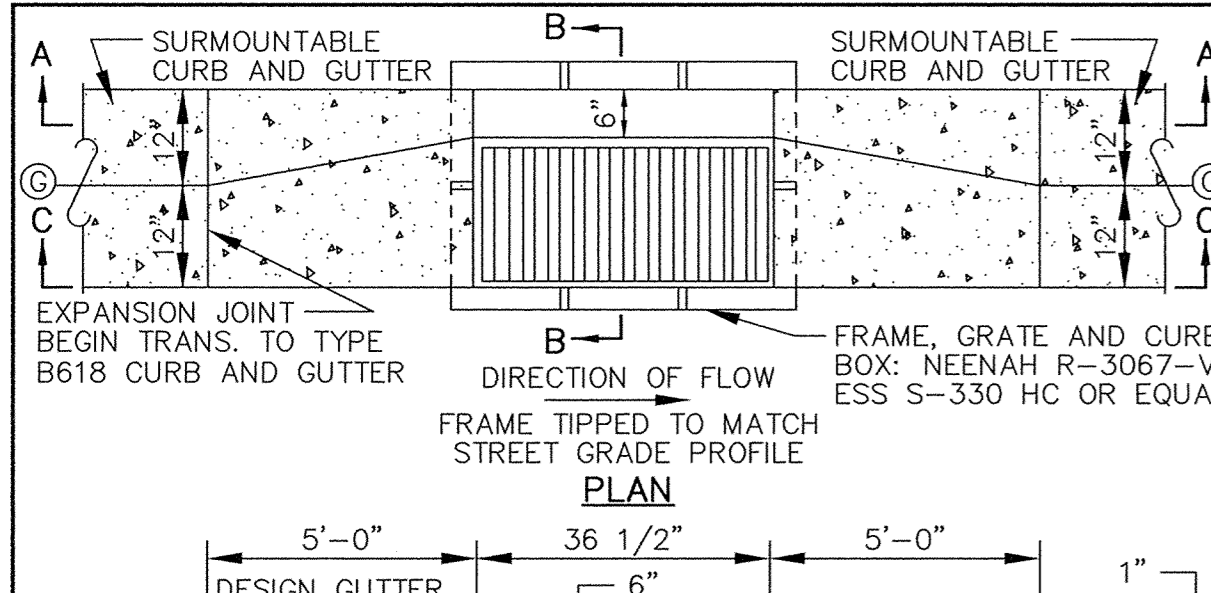
RURAL DRIVEWAY ENTRANCE



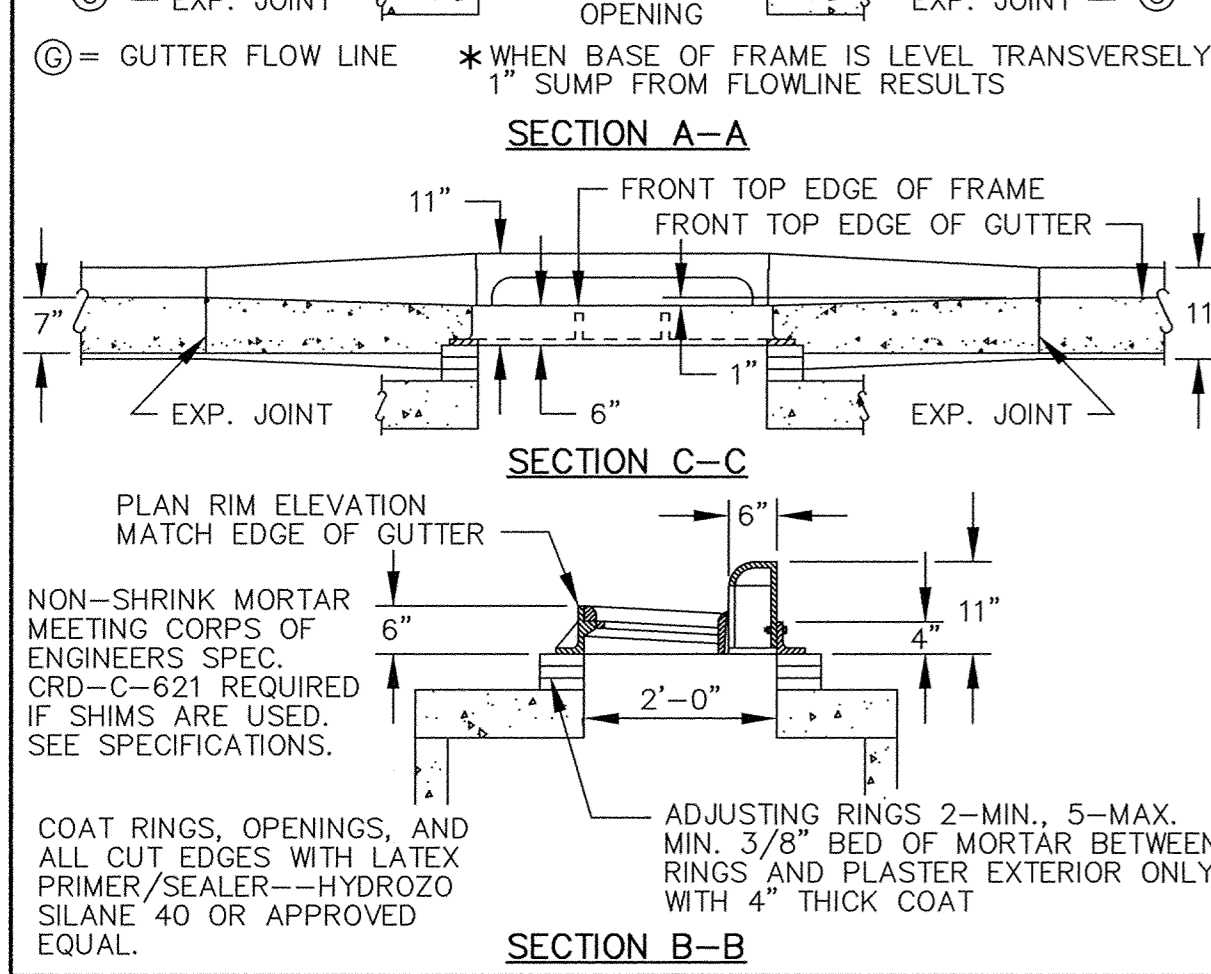
EROSION CONTROL DETAIL



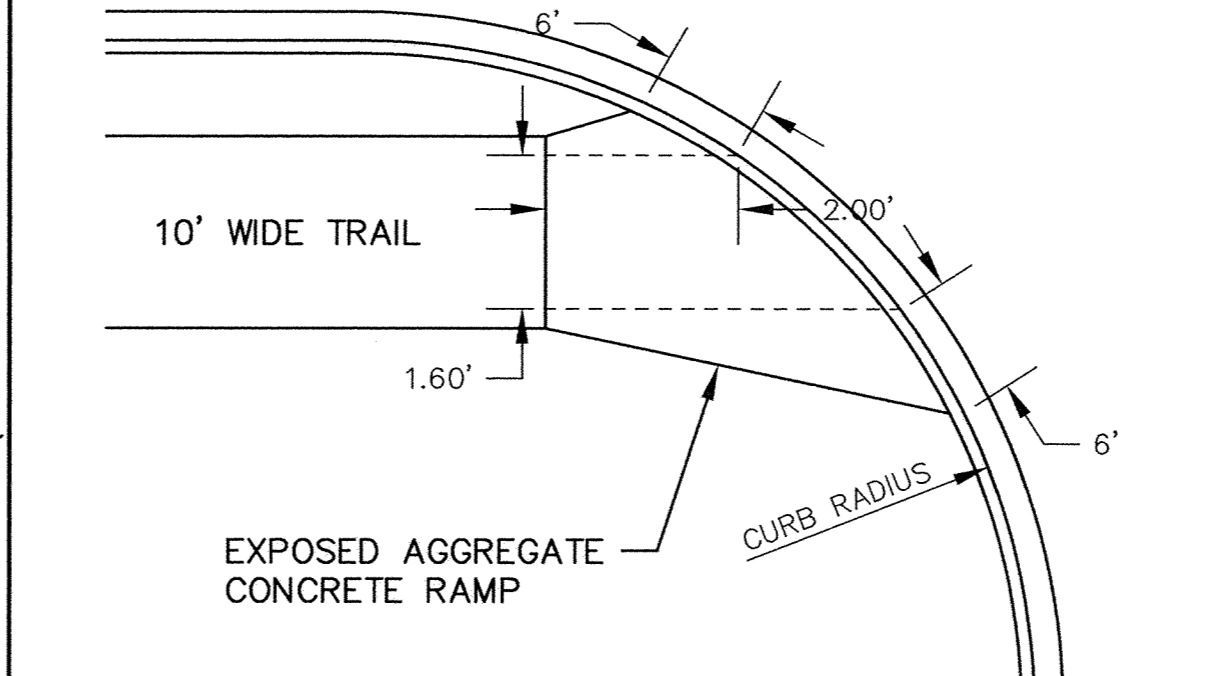
EROSION CONTROL DETAIL



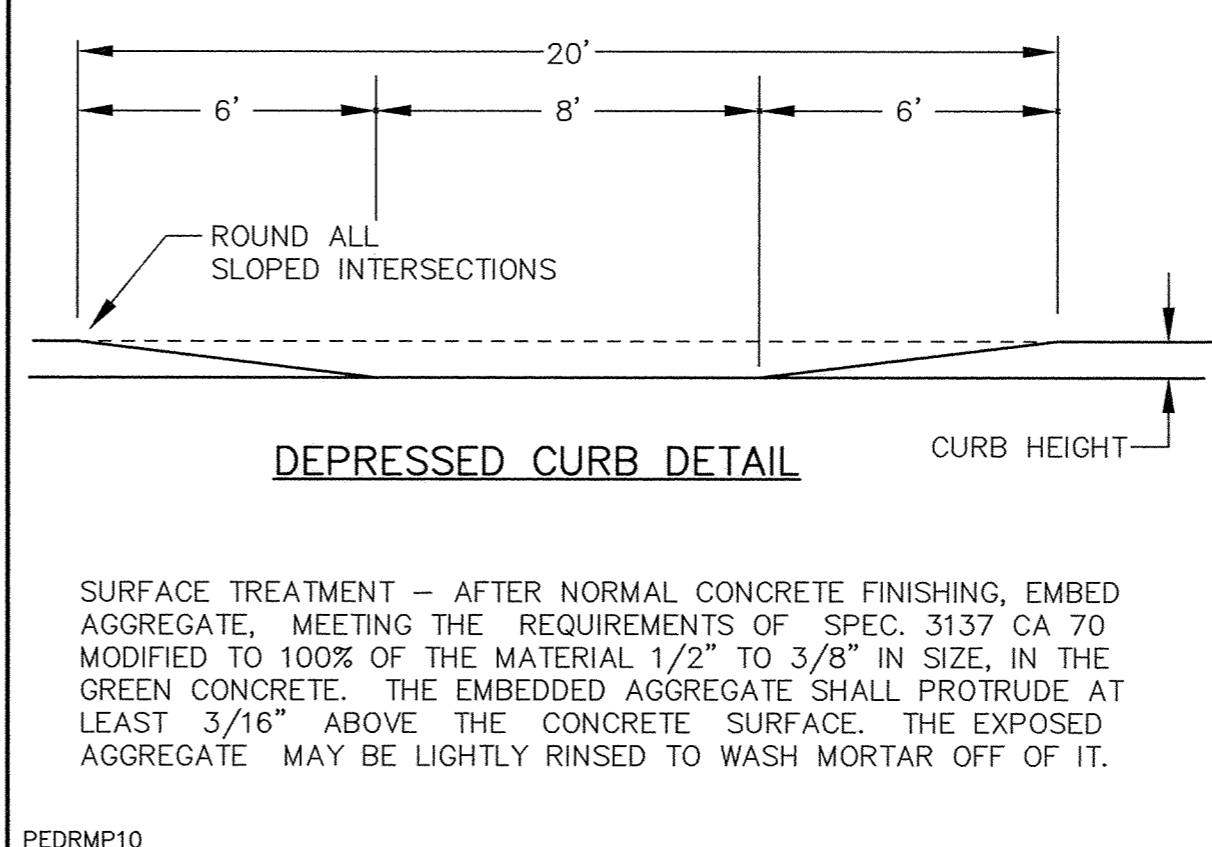
CATCH BASIN FRAME PLACEMENT SURMOUNTABLE CURB AND GUTTER



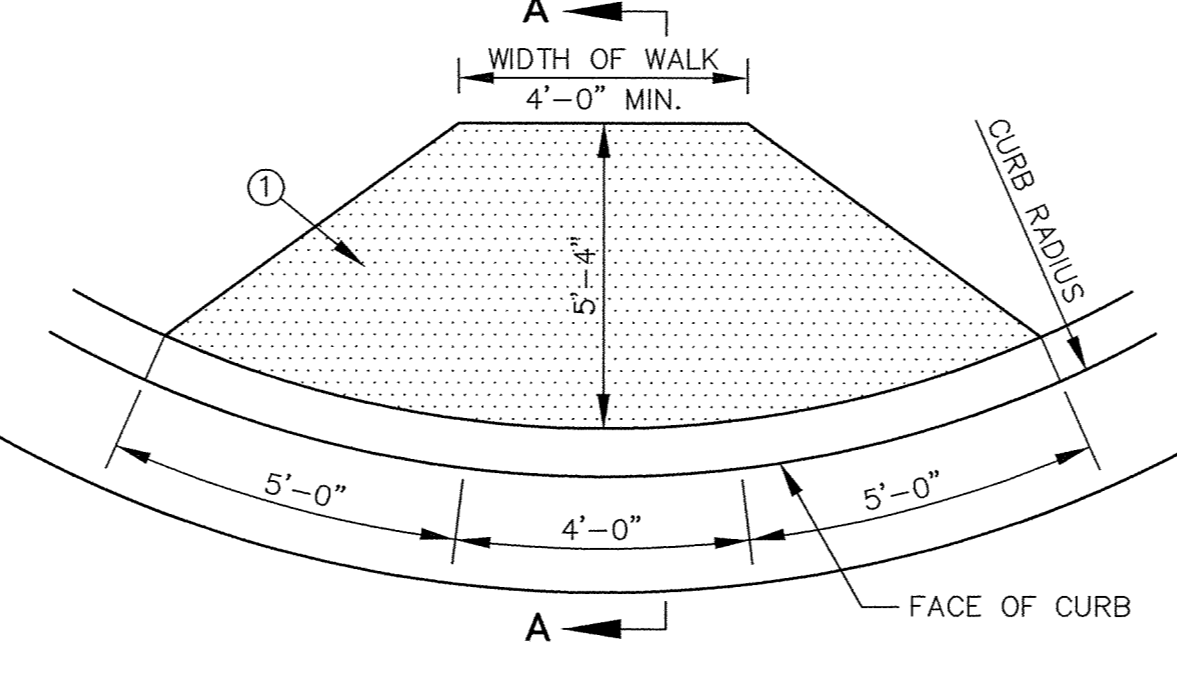
CATCH BASIN FRAME PLACEMENT SURMOUNTABLE CURB AND GUTTER



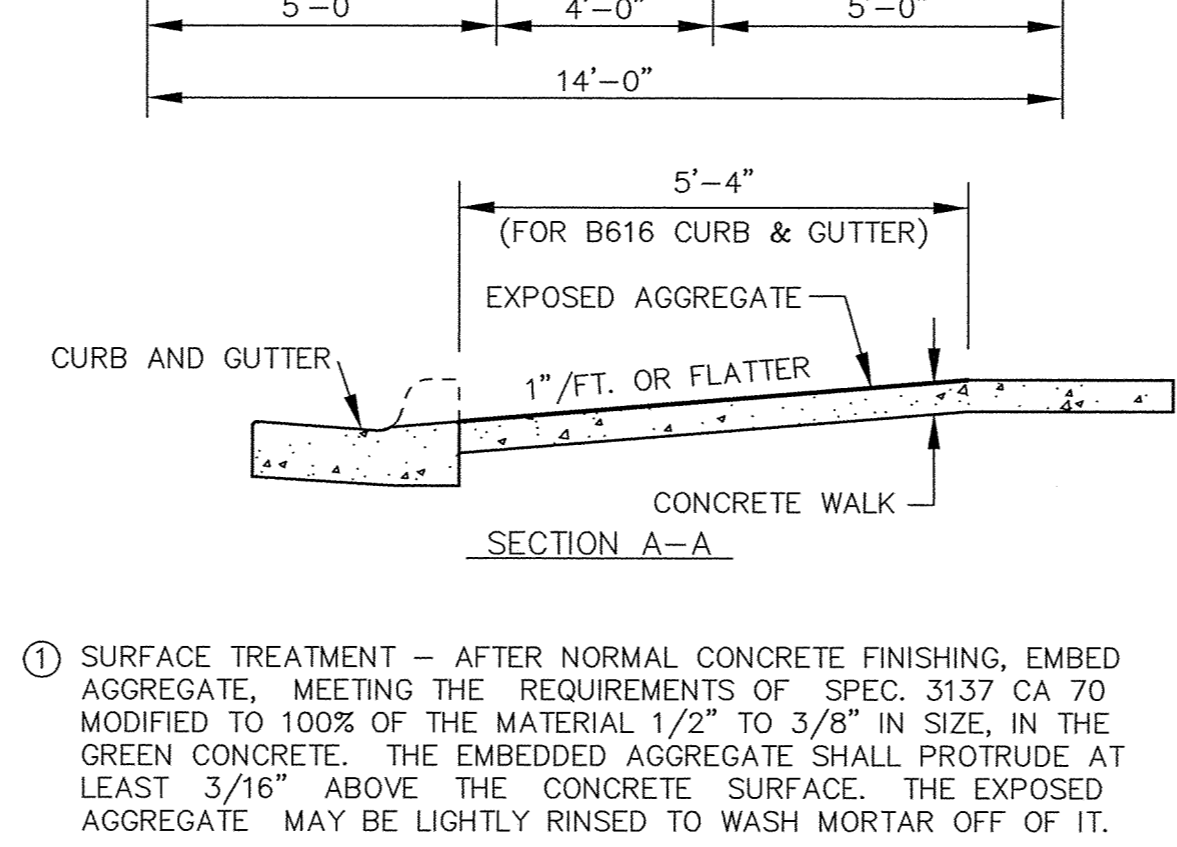
DEPRESSED CURB DETAIL



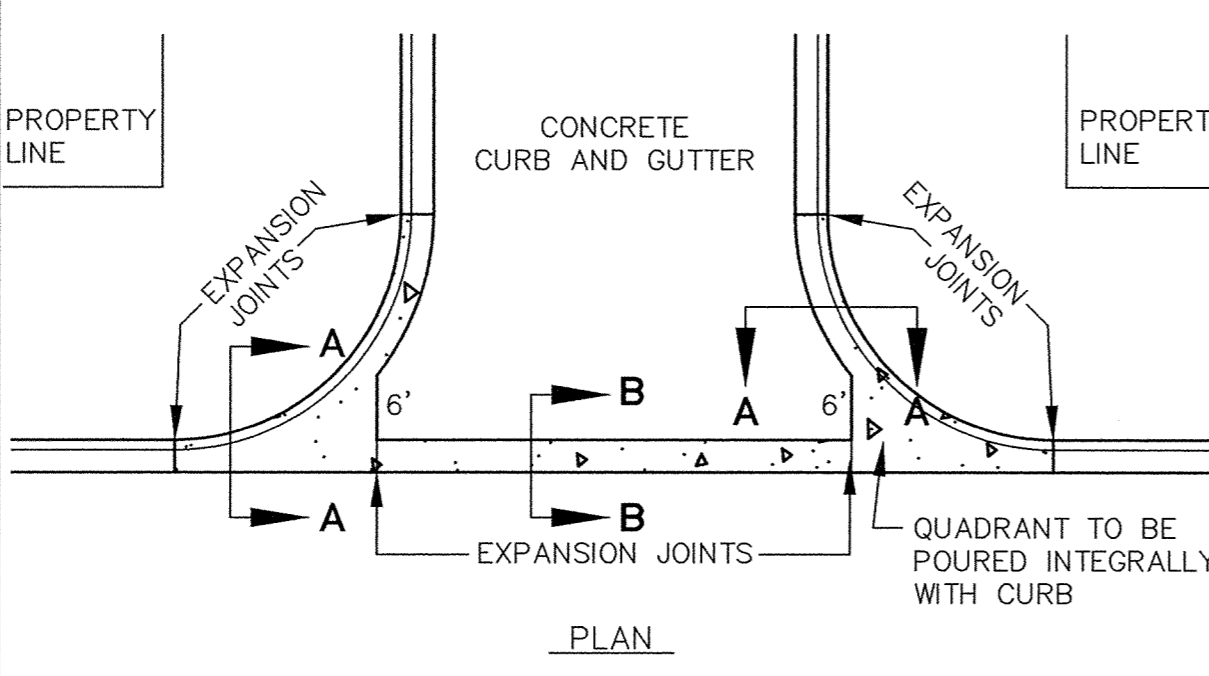
DEPRESSED CURB DETAIL



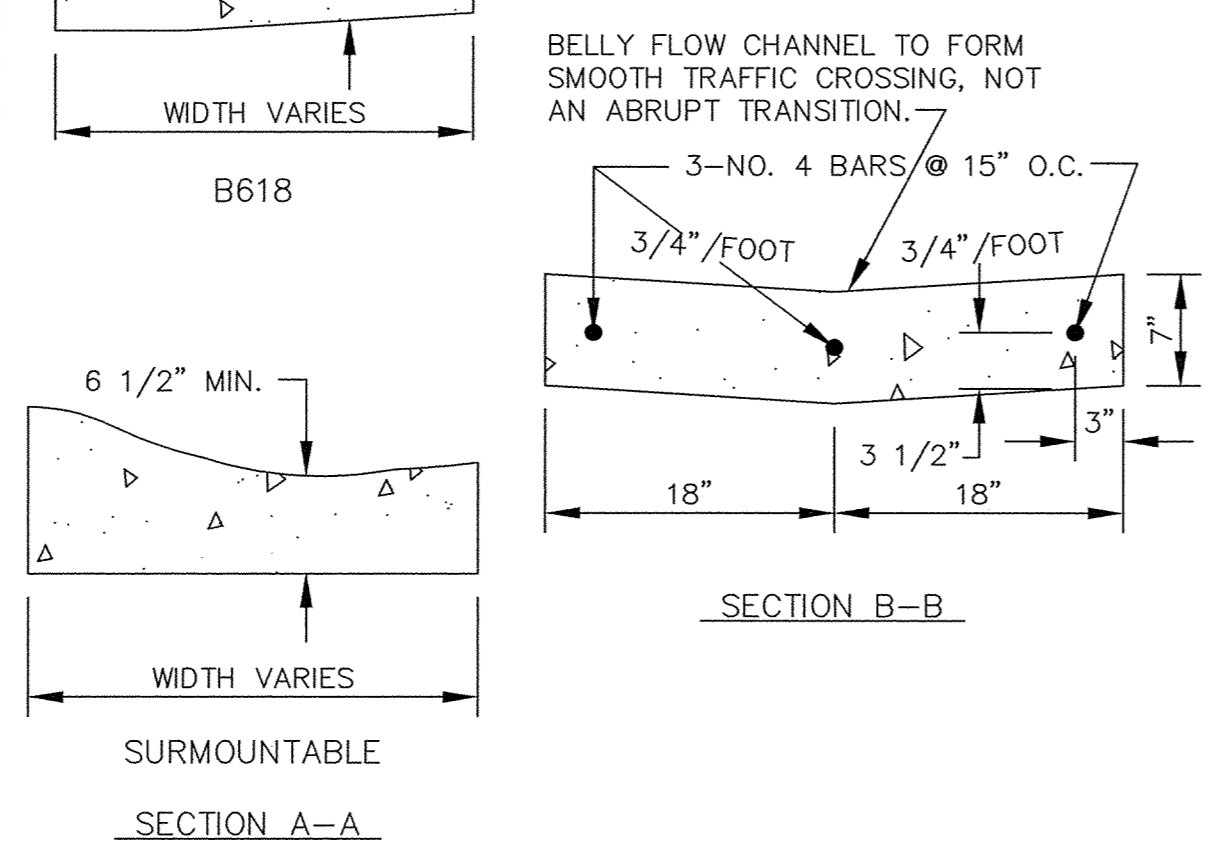
PEDESTRIAN CURB RAMPS



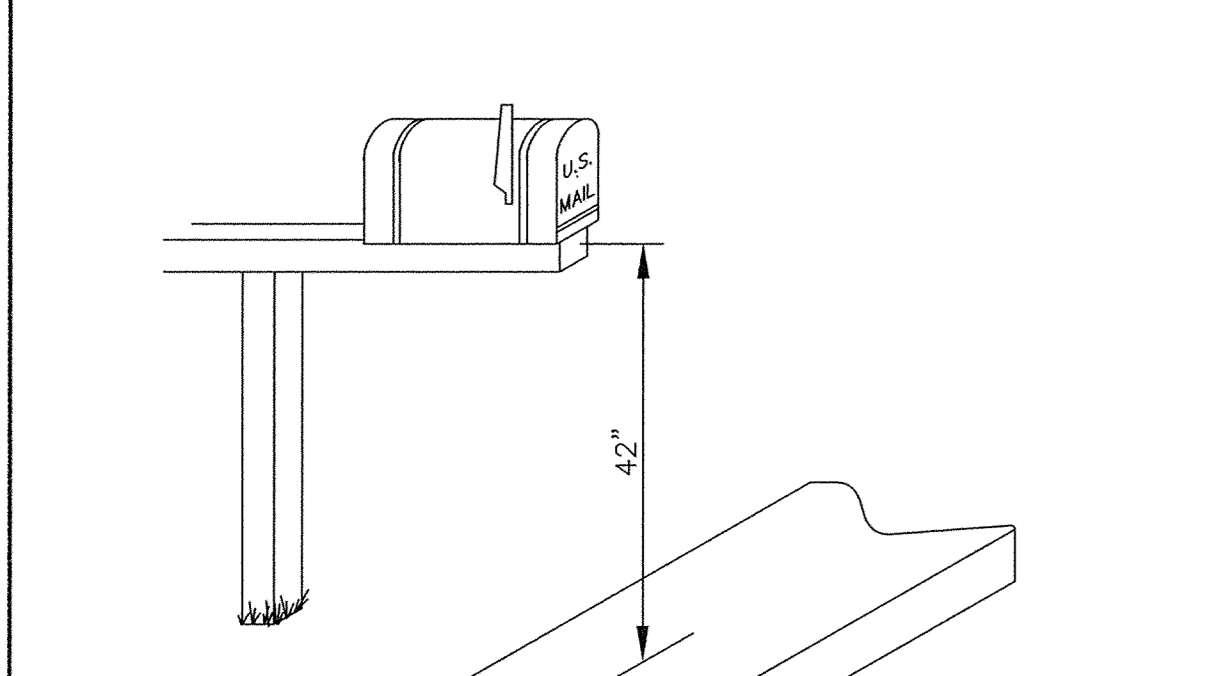
PEDESTRIAN CURB RAMPS



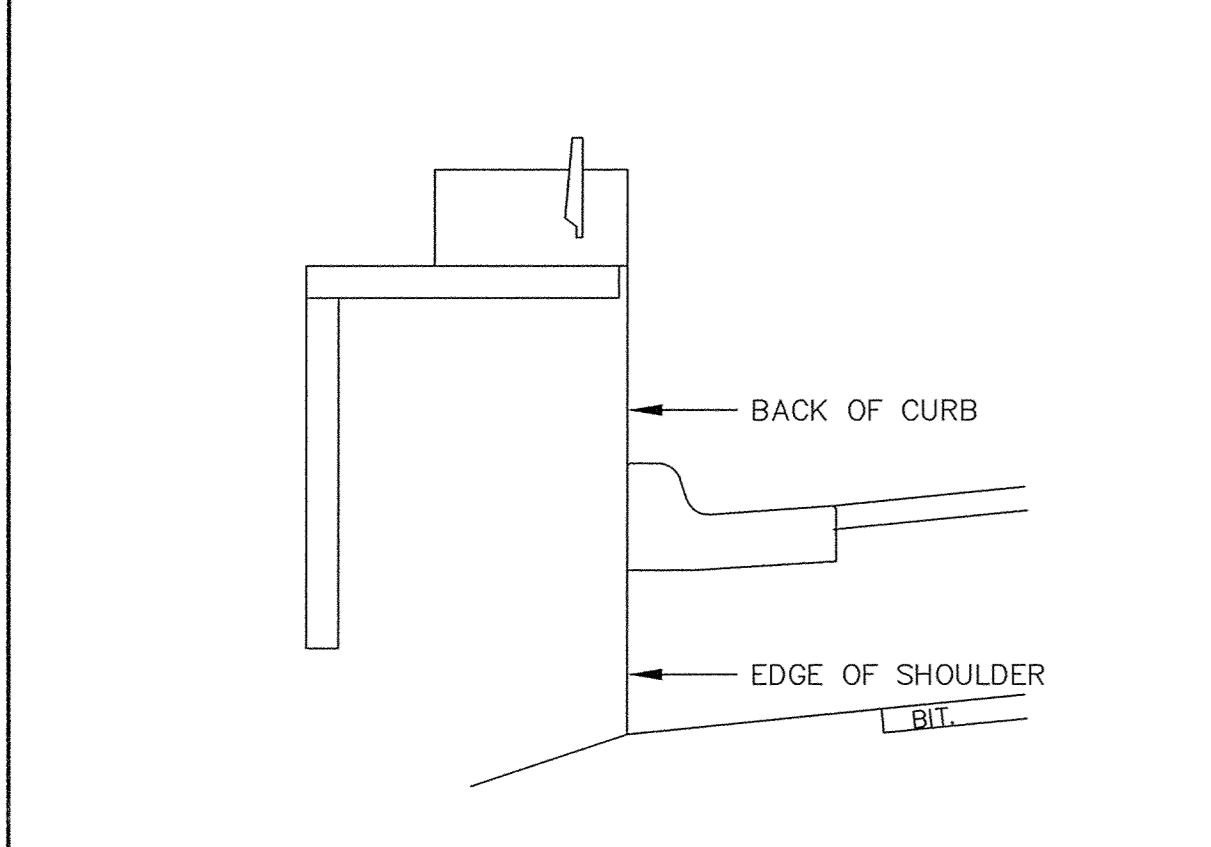
CONCRETE V GUTTER



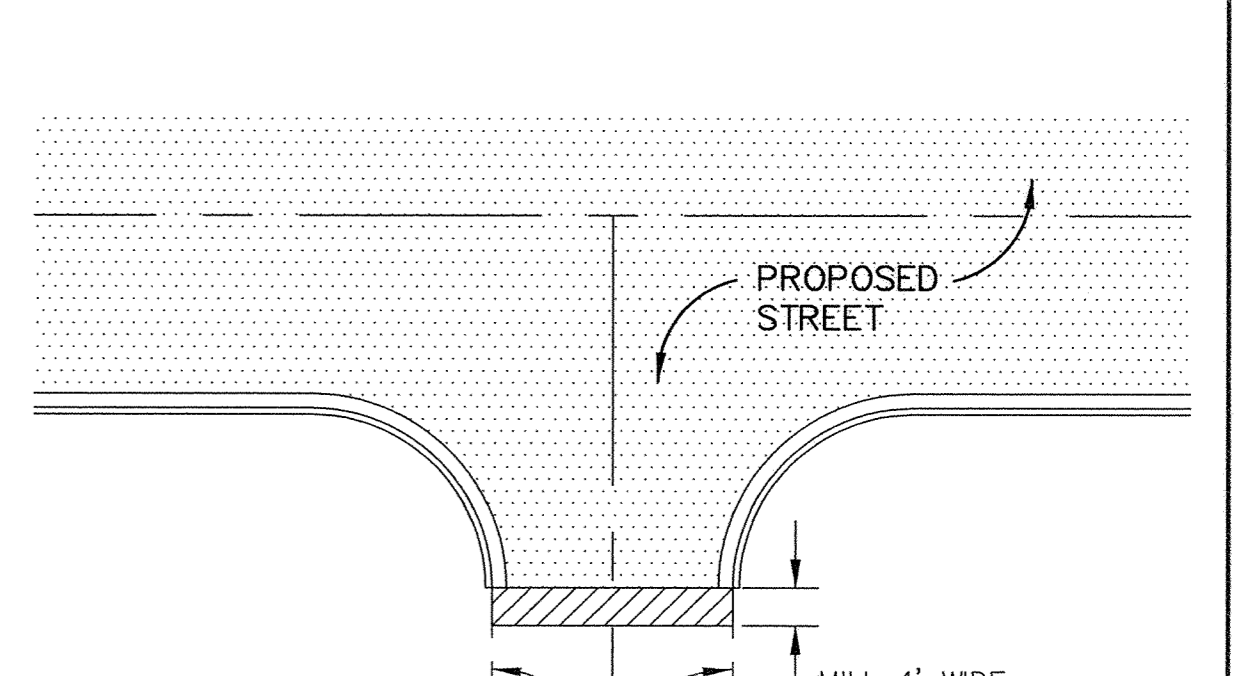
CONCRETE V GUTTER



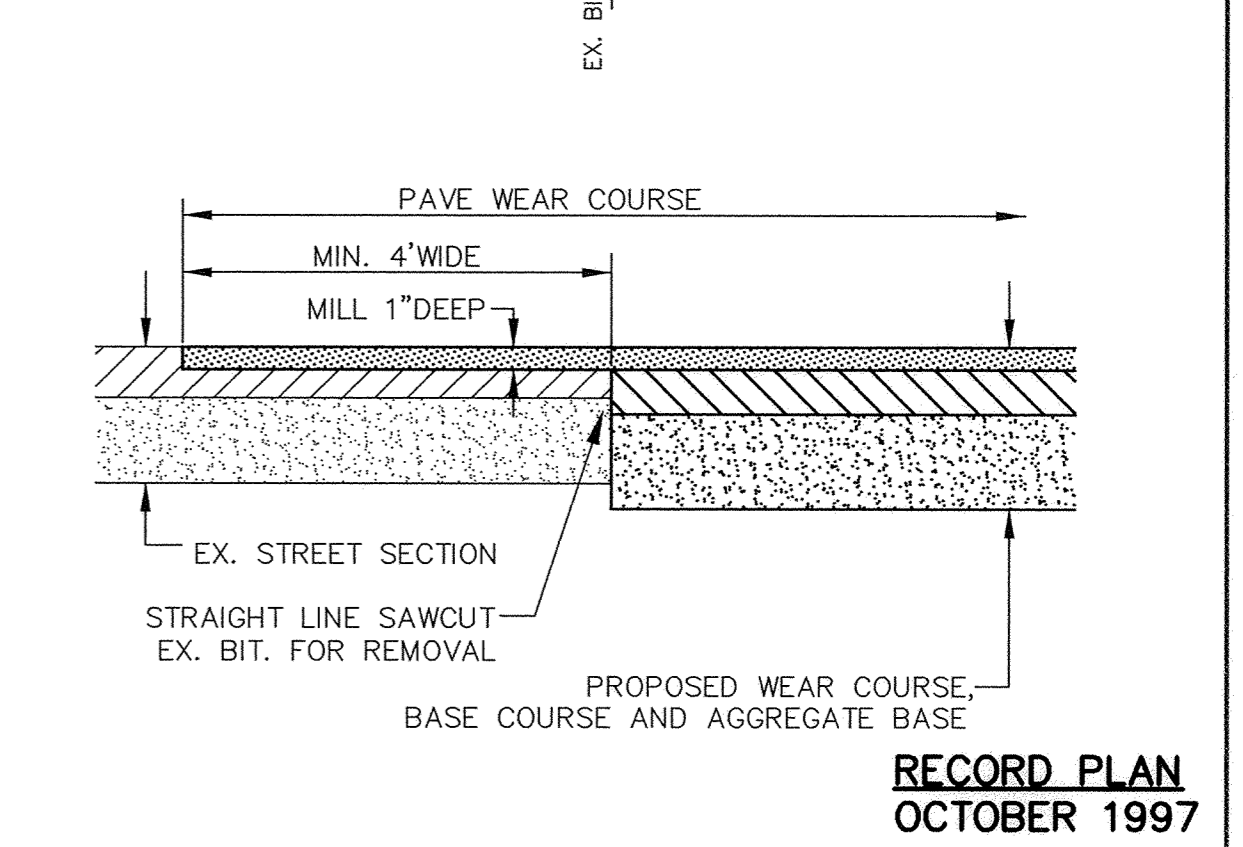
MAIL BOX



MAIL BOX



MATCH EXISTING BITUMINOUS SURFACING



MATCH EXISTING BITUMINOUS SURFACING

RECORD PLAN
OCTOBER 1997

CITY OF ELK RIVER
171ST AVENUE / T.H. 10 / ULYSSES STREET
STREET CONSTRUCTION DETAILS

S.A.P. 204-132-01(171ST AVE.) S.A.P. 204-010-04(TH 10)

DATE JULY 1996 SHEET 25 OF 25 SHEETS PROJECT NO. 230-313-20

I HEREBY CERTIFY THAT THIS PLAN, SPECIFICATION, OR REPORT WAS PREPARED BY ME OR UNDER MY DIRECT SUPERVISION AND THAT I AM A DULY REGISTERED PROFESSIONAL ENGINEER UNDER THE LAWS OF THE STATE OF MINNESOTA.

Sam Manner
DATE 7/23/96 REG. NO. 15316

MSA CONSULTING ENGINEERS

REVISIONS	DATE	DESCRIPTION	DESIGNED	CHECKED	DRAWN

GRAPHIC SCALE
0 HORIZ. N/A
0 VERT. N/A

NOTE:
DETAIL PLATES SHOWN HAVE NOT BEEN CONVERTED TO METRIC UNITS.

ER313-D2