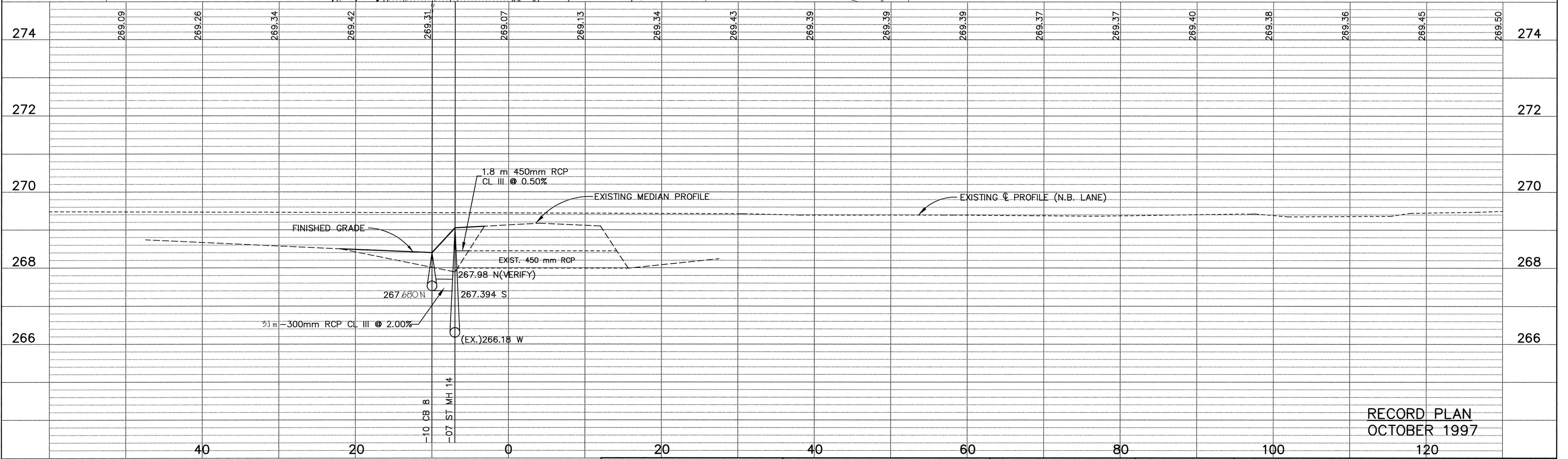
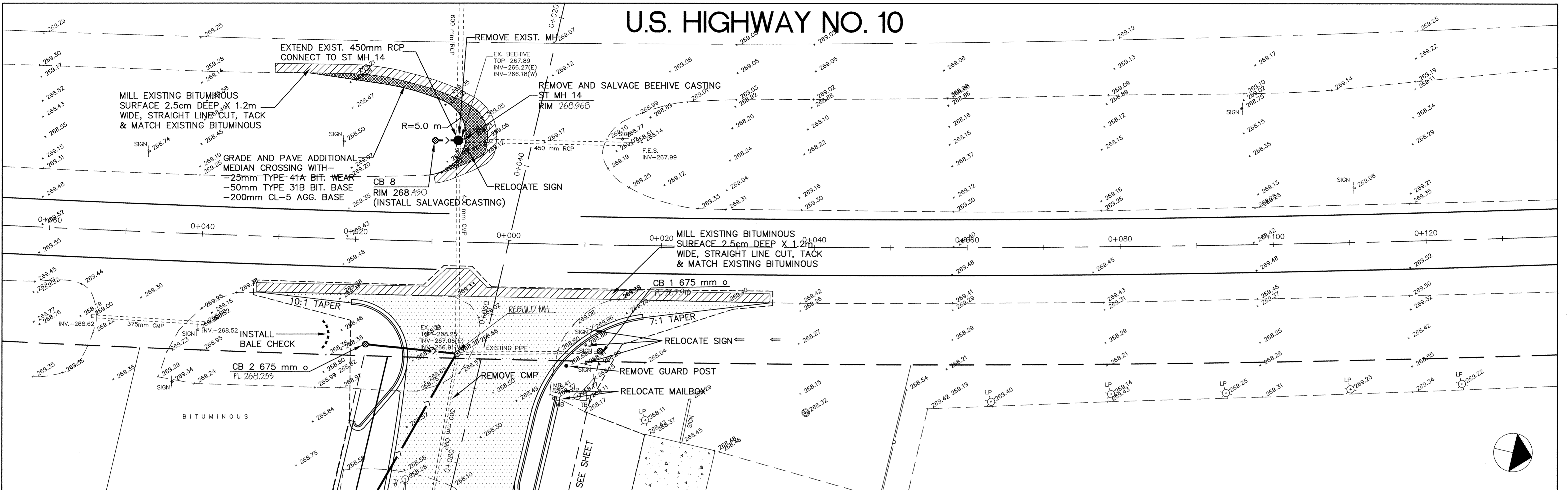


U.S. HIGHWAY NO. 10



RECORD PLAN
OCTOBER 1997

ER313-G

I HEREBY CERTIFY THAT THIS PLAN, SPECIFICATION, OR REPORT WAS PREPARED BY ME OR UNDER MY DIRECT SUPERVISION AND THAT I AM A DULY REGISTERED PROFESSIONAL ENGINEER UNDER THE LAWS OF THE STATE OF MINNESOTA.

Edward Mauer
DATE 7/23/96 REG. NO. 1536



1326 ENERGY PARK DRIVE
ST. PAUL, MINNESOTA 55108
(612) 644-4389

| REVISIONS | DATE | DESCRIPTION |
|-----------|------|-------------|
| | | |
| | | |

| | |
|----------------|--------------|
| DESIGN | DRAWN |
| CHECKED | |
| GRAPHIC SCALES | |
| 0 | HORIZ (M) 10 |
| 0 | VERT (M) 2 |
| | 1:50 |

CITY OF ELK RIVER
171ST AVENUE
ACCELERATION LANE CONSTRUCTION
U.S. HIGHWAY NO. 10

S.A.P. 204-010-04 STA 0-035 TO STA 0+035
DATE JULY 1996 SHEET 11 OF 25 SHEETS PROJECT NO. 230-313-20