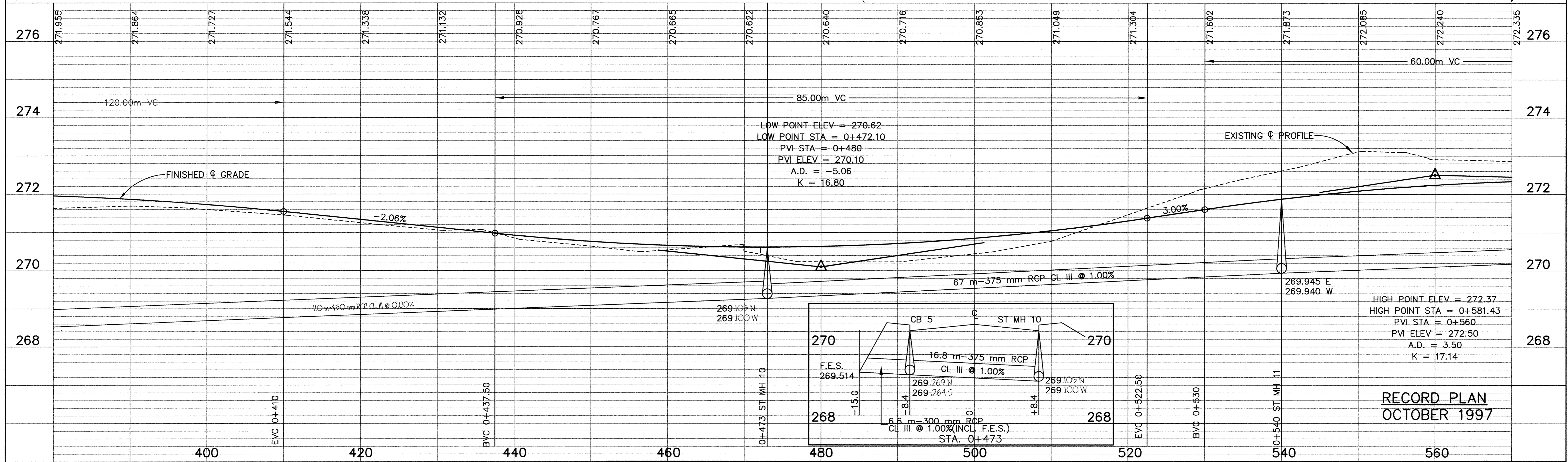
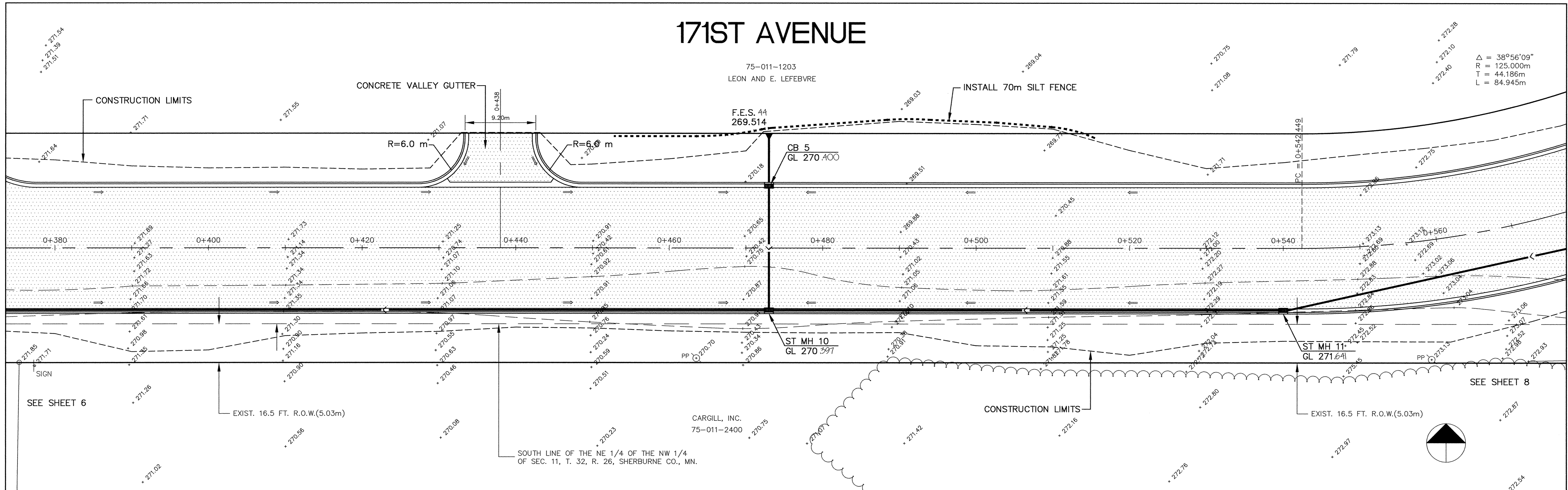


171ST AVENUE

75-011-1203
LEON AND E. LEFEBVRE

$\Delta = 38^{\circ}56'09''$
R = 125.000m
T = 44.186m
L = 84.945m



LOW POINT ELEV = 270.62
LOW POINT STA = 0+472.10
PVI STA = 0+480
PVI ELEV = 270.10
A.D. = -5.06
K = 16.80

HIGH POINT ELEV = 272.37
HIGH POINT STA = 0+581.43
PVI STA = 0+560
PVI ELEV = 272.50
A.D. = 3.50
K = 17.14

RECORD PLAN
OCTOBER 1997

I HEREBY CERTIFY THAT THIS PLAN, SPECIFICATION, OR REPORT WAS PREPARED BY ME OR UNDER MY DIRECT SUPERVISION AND THAT I AM A DULY REGISTERED PROFESSIONAL ENGINEER UNDER THE LAWS OF THE STATE OF MINNESOTA.
Levy M. Munn
DATE 7/23/96 REG. NO. 15316



1326 ENERGY PARK DRIVE
ST. PAUL, MINNESOTA 55108
(612) 644-4389

DATE	DESCRIPTION

DESIGN	DRAWN
CHECKED	

S.A.P. 204-132-01
DATE JULY 1996

CITY OF ELK RIVER
171ST AVENUE
STORM SEWER AND STREET CONSTRUCTION
171ST AVENUE

STA 0+380 TO STA 0+560
SHEET 7 OF 25 SHEETS
PROJECT NO. 230-313-20

DRAWING NUMBER 171AV/96 7

SAICO PRODUCTS • NEW HOPE, MINNESOTA
RENDERED BY PART NUMBER 8582

DRAWING NUMBER 171AV/96 7

SAICO PRODUCTS • NEW HOPE, MINNESOTA
RENDERED BY PART NUMBER 8582