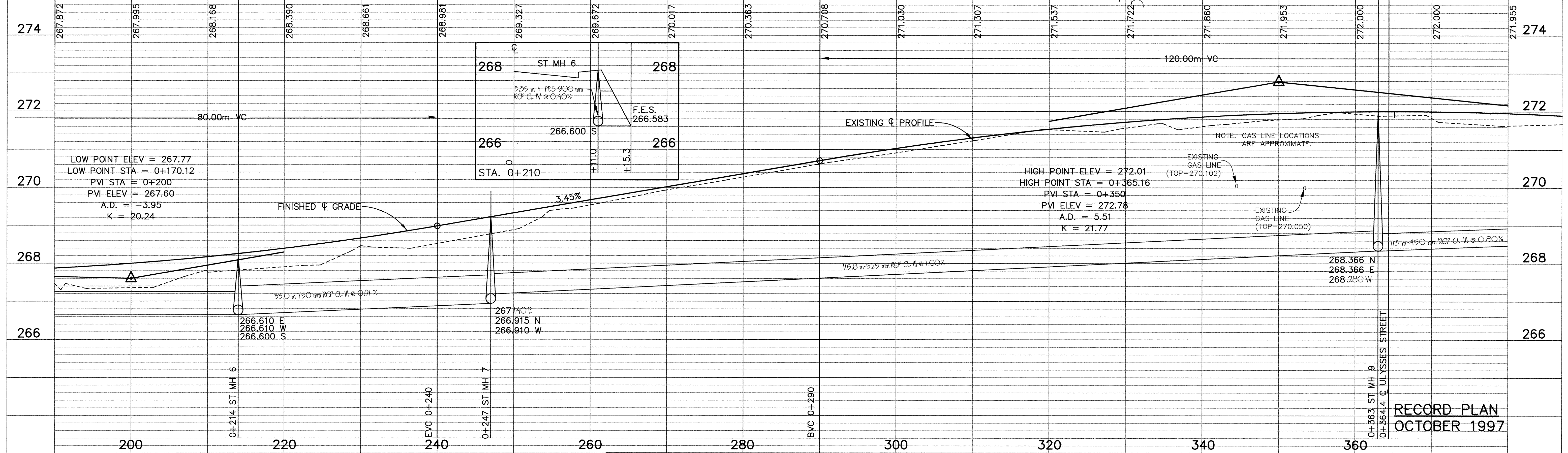
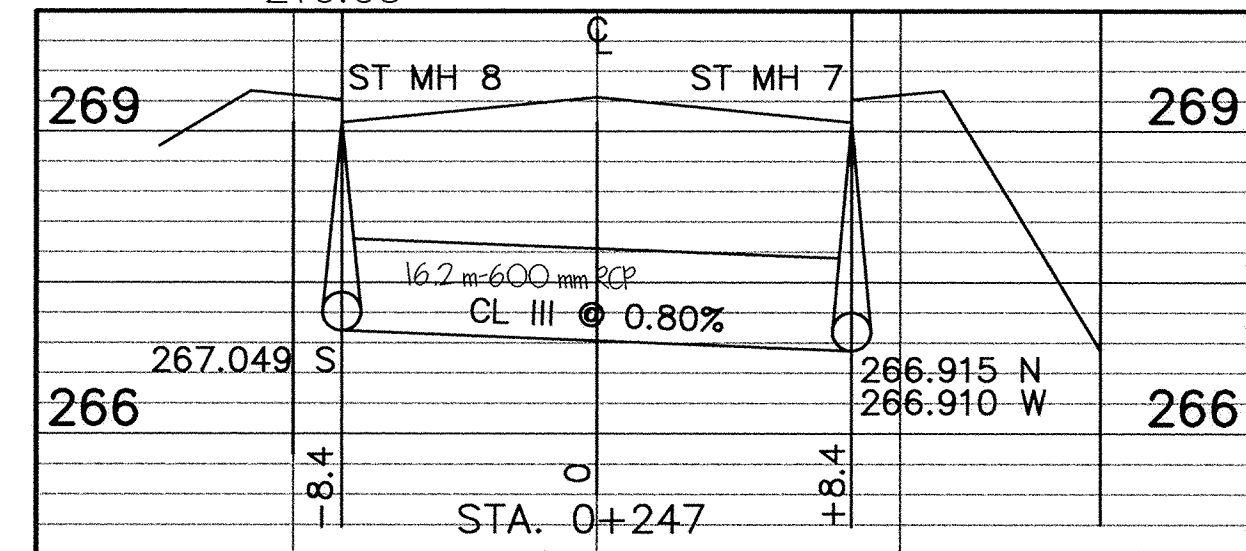
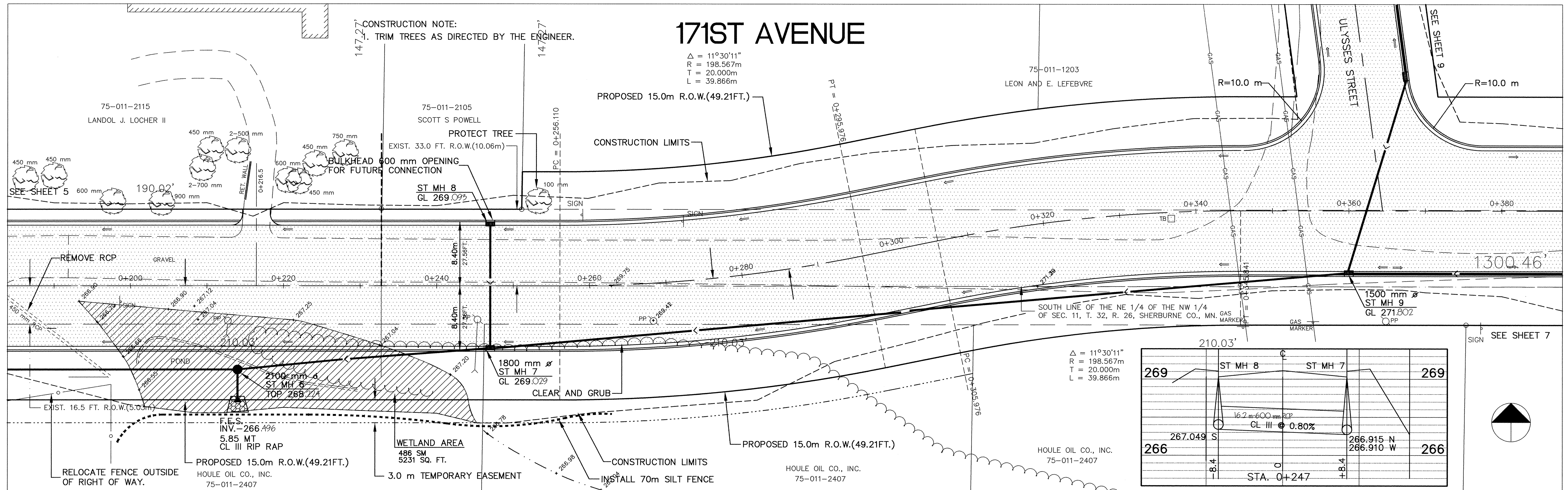


171ST AVENUE

$\Delta = 11^{\circ}30'11''$
 $R = 198.567m$
 $T = 20.000m$
 $L = 39.866m$

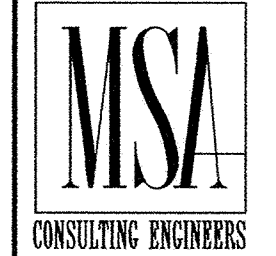
CONSTRUCTION NOTE:
1. TRIM TREES AS DIRECTED BY THE ENGINEER.

PROPOSED 15.0m R.O.W.(49.21FT.)



I HEREBY CERTIFY THAT THIS PLAN, SPECIFICATION, OR REPORT WAS PREPARED BY ME OR UNDER MY DIRECT SUPERVISION AND THAT I AM A DULY REGISTERED PROFESSIONAL ENGINEER UNDER THE LAWS OF THE STATE OF MINNESOTA.

Samy Mounir
DATE 7/23/96 REG. NO. 15316



1326 ENERGY PARK DRIVE
ST. PAUL, MINNESOTA 55108
(612) 644-4389

REVISIONS	DATE	DESCRIPTION	DESIGN	DRAWN

CITY OF ELK RIVER 171ST AVENUE STORM SEWER AND STREET CONSTRUCTION 171ST AVENUE	
S.A.P. 204-132-01	STA 0+190 TO STA 0+380
DATE JULY 1996	SHEET 6 OF 25 SHEETS
PROJECT NO. 230-313-20	