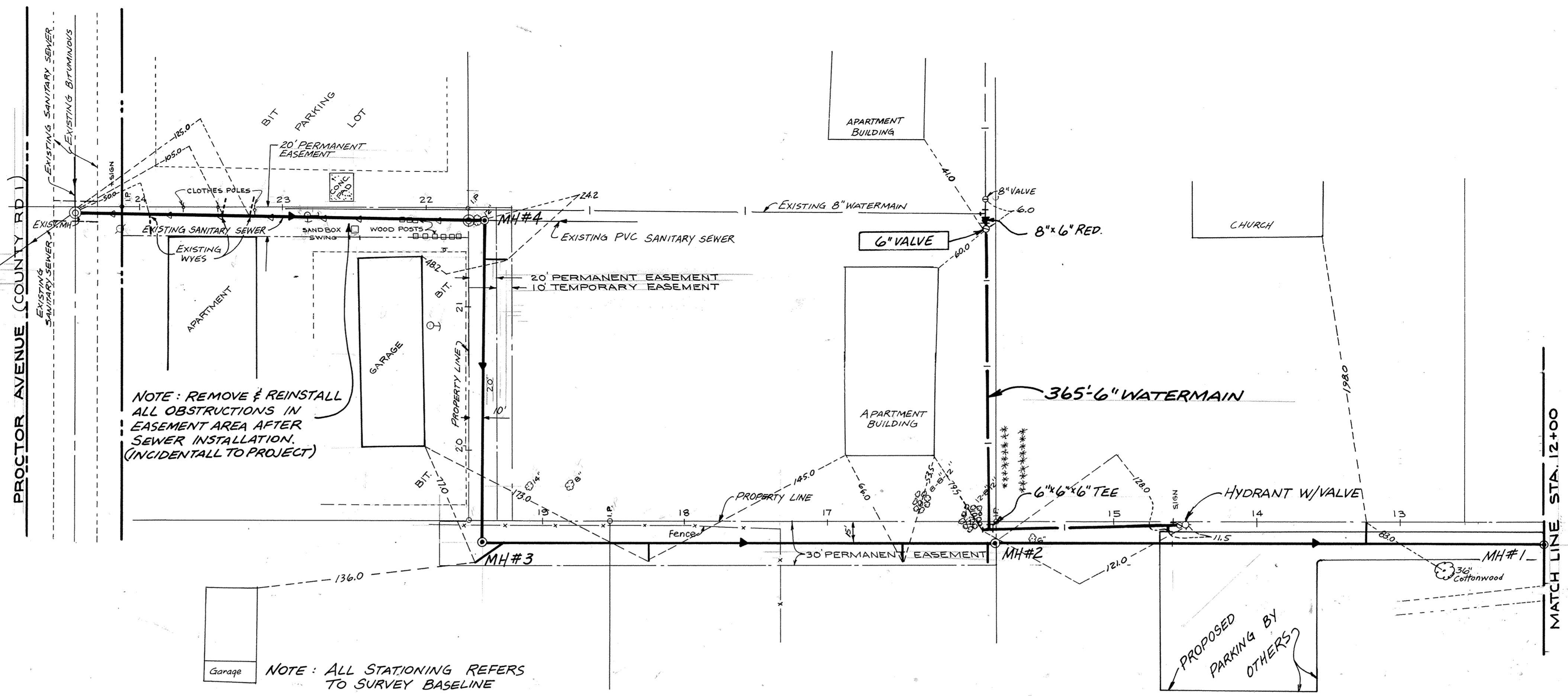
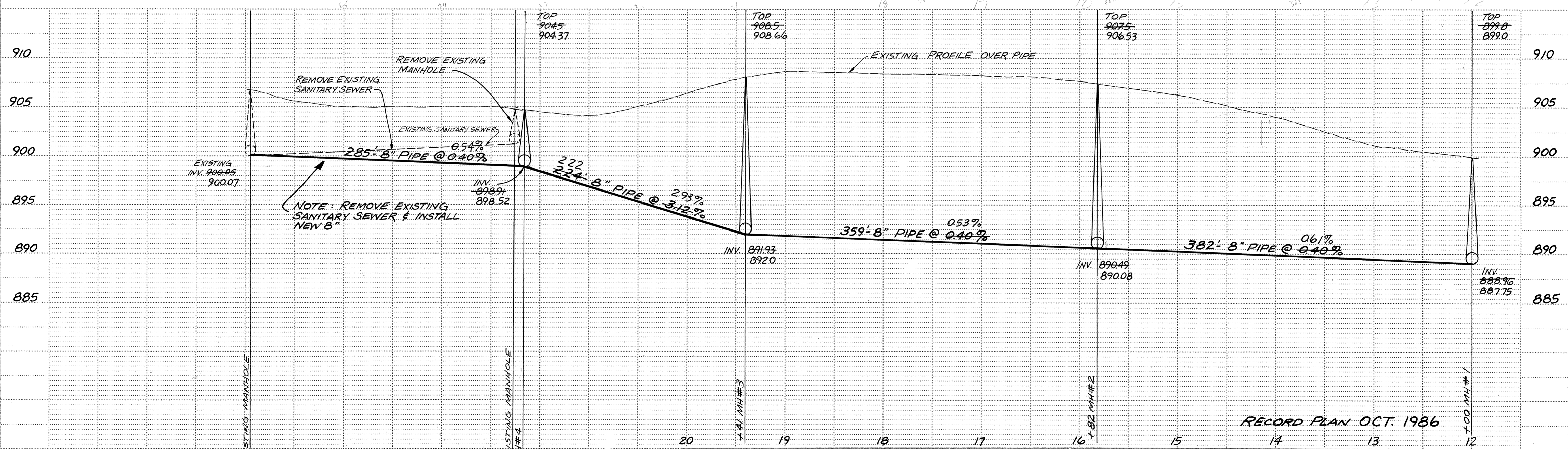


RESTORATION OF PROCTOR AVE. SHALL CONSIST OF 4" OF CLASS 5 AGGREGATE BASE AND 2" BIT WEARING COURSE (MNDOT 2341)
 CONTRACTOR TO SEAL OFF EXIST. SANITARY SEWER LINE FLOWING TO THE WEST.



NOTE: REMOVE & REINSTALL ALL OBSTRUCTIONS IN EASEMENT AREA AFTER SEWER INSTALLATION. (INCIDENTAL TO PROJECT)

NOTE: ALL STATIONING REFERS TO SURVEY BASELINE



RECORD PLAN OCT. 1986

MSA CONSULTING ENGINEERS
Maier Stewart & Associates Inc.
 480 CEDAR STREET (612)227-3475 ST. PAUL, MINNESOTA 55101

DATE	DESCRIPTION

CITY OF ELK RIVER
SANITARY SEWER EXTENSION
 400' SO OF SCHOOL ST FROM STA. 12+00 TO PROCTOR AVE.
 DESIGNED: _____
 CHECKED: _____
 DRAWN: JPD
 GRAPHIC SCALE: 1" = 50'
 DATE: FEB. 1986 SHEET 6 OF 7 SHEETS PROJECT NO. 230-013