

DRAWING NUMBER

DRAWING NUMBER

DRAWING NUMBER

DRAWING NUMBER  
169THWY.86  
1

MAIER STUART & ASSOCIATES  
REGISTERED PROFESSIONAL ENGINEERS

MAIER STUART & ASSOCIATES  
REGISTERED PROFESSIONAL ENGINEERS

MAIER STUART & ASSOCIATES  
REGISTERED PROFESSIONAL ENGINEERS

MAIER STUART & ASSOCIATES  
REGISTERED PROFESSIONAL ENGINEERS

# WATERMAIN AND SANITARY SEWER IMPROVEMENTS

## STATE HIGHWAY NO. 169 SCHOOL STREET

I HEREBY CERTIFY THAT THIS PLAN, SPECIFICATION, OR REPORT  
WAS PREPARED BY ME OR UNDER MY DIRECT SUPERVISION AND I  
AM A DULY REGISTERED PROFESSIONAL ENGINEER UNDER THE  
LAWS OF THE STATE OF MINNESOTA.

*Kevin J. Maier*  
DATE 3/7/86 MINNESOTA REGISTRATION NO. 15316

---



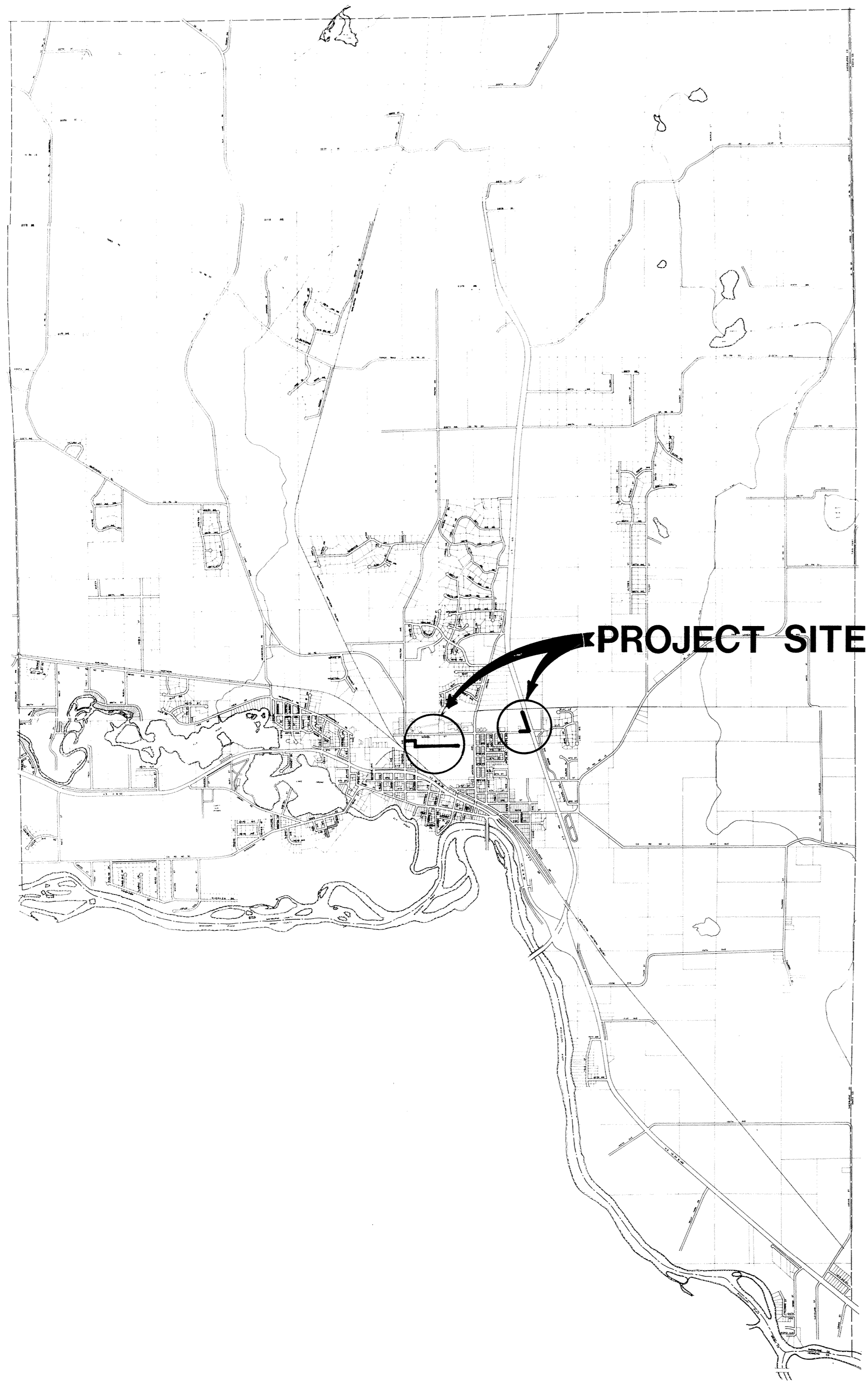
**CONSULTING ENGINEERS**  
**Maier Stewart & Associates Inc.**

480 CEDAR STREET      (612)227-9475      ST. PAUL, MINNESOTA 55101

---



**City of  
Elk River**



STATE HWY NO 169  
SCHOOL SAN SEW.  
1986  
PG'S 120-127

RECORD PLAN OCT. 1986