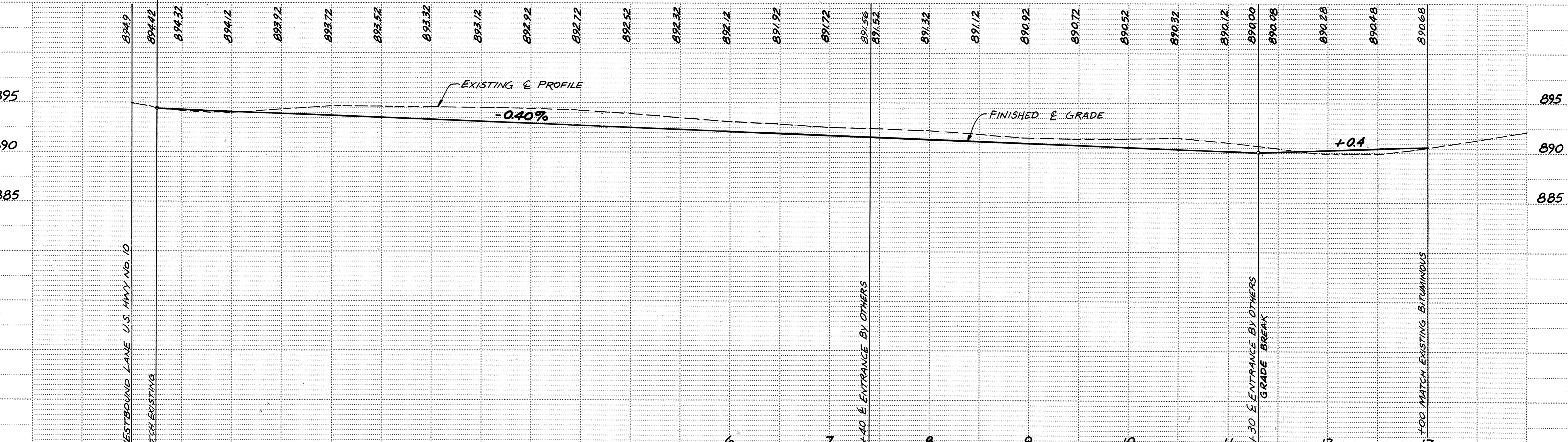
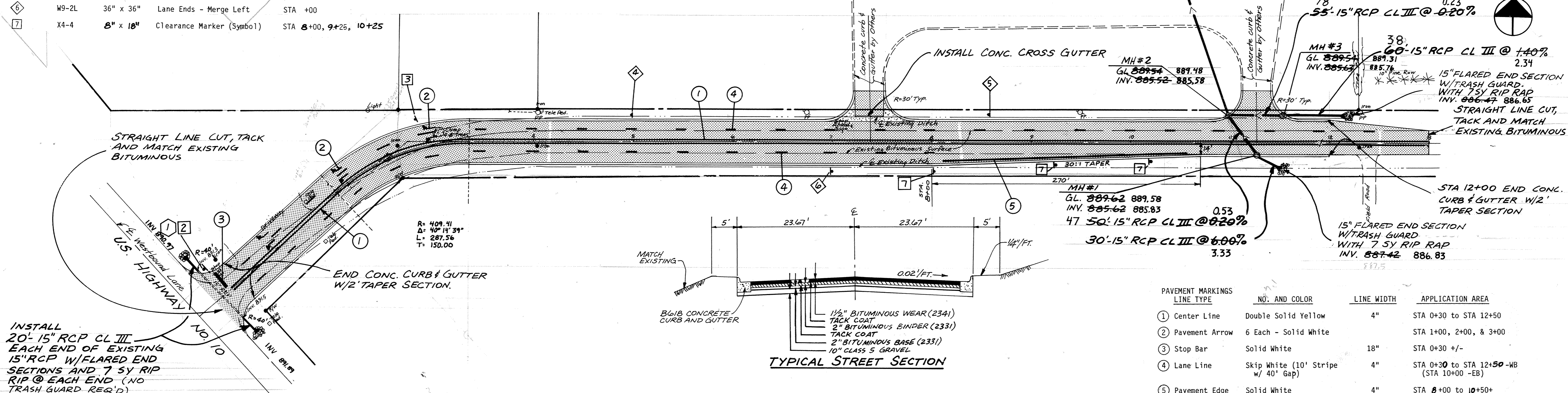


SIGNING SYMBOL	SIGN CODE	SIZE	SIGN MESSAGE	LOCATION
1	R1-1	30" x 30"	Stop	STA 0+30
2	R6-3a	24" x 18"	Divided Highway (Symbol)	STA 0+30
3	R3-8E	36" x 30"	Left and Right Turn (Symbol)	STA 3+00
4	W3-1	30" x 30"	Stop Ahead	STA 5+00
5	W1-1L	30" x 30"	Left Turn (Symbol)	STA 8+50
6	W9-2L	36" x 36"	Lane Ends - Merge Left	STA +00
7	X4-4	8" x 18"	Clearance Marker (Symbol)	STA 8+00, 9+25, 10+25

# 165TH AVENUE



INSTALL 20'-15" RCP CL III EACH END OF EXISTING 15" RCP W/ FLARED END SECTIONS AND 7 SY RIP RIP @ EACH END (NO TRASH GUARD REQ'D)

TYPICAL STREET SECTION

PAVEMENT MARKINGS LINE TYPE	NO. AND COLOR	LINE WIDTH	APPLICATION AREA
1 Center Line	Double Solid Yellow	4"	STA 0+30 to STA 12+50
2 Pavement Arrow	6 Each - Solid White		STA 1+00, 2+00, & 3+00
3 Stop Bar	Solid White	18"	STA 0+30 +/-
4 Lane Line	Skip White (10' Stripe w/ 40' Gap)	4"	STA 0+30 to STA 12+50-WB (STA 10+00 -EB)
5 Pavement Edge	Solid White	4"	STA 8+00 to 10+50+

**Maier Stewart & Associates Inc.**  
 CONSULTING ENGINEERS  
 1959 SLOAN PLACE (612) 774-6021 ST. PAUL, MINNESOTA 55117

DATE	7/25/88	DESCRIPTION	Minor Stationing for Striping
REVISIONS	DEC 88	RECORD PLAN	
DESIGNED		CHECKED	
DRAWN	MR	GRAPHIC SCALE	
		HORIZ. 50'	
		VERT. 5'	

**CITY OF ELK RIVER**  
 STREET IMPROVEMENTS  
 165TH AVENUE  
 DATE July 1987 SHEET 2 OF 5 SHEETS PROJECT NO. 230-039

DRAWING NUMBER 165AV 88

DRAWING NUMBER 231

DRAWING NUMBER 2

DRAWING NUMBER 231