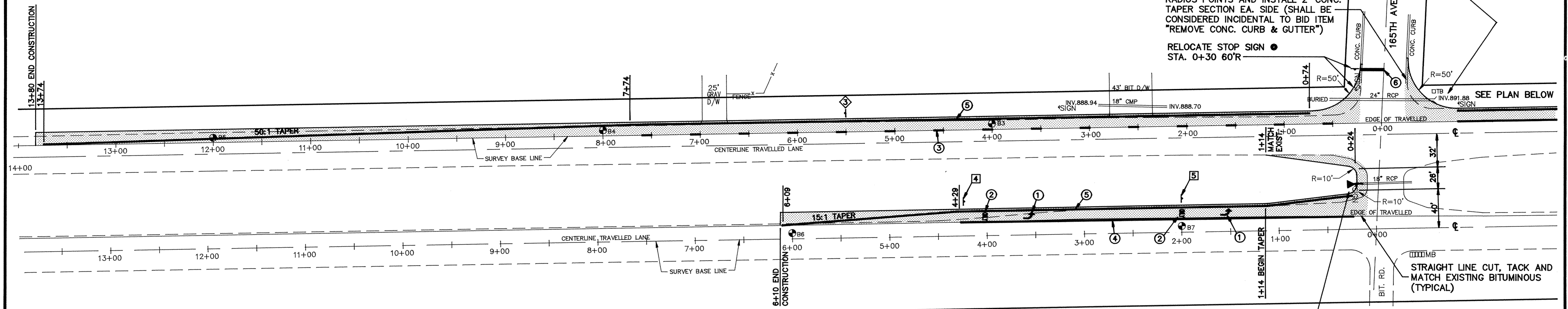
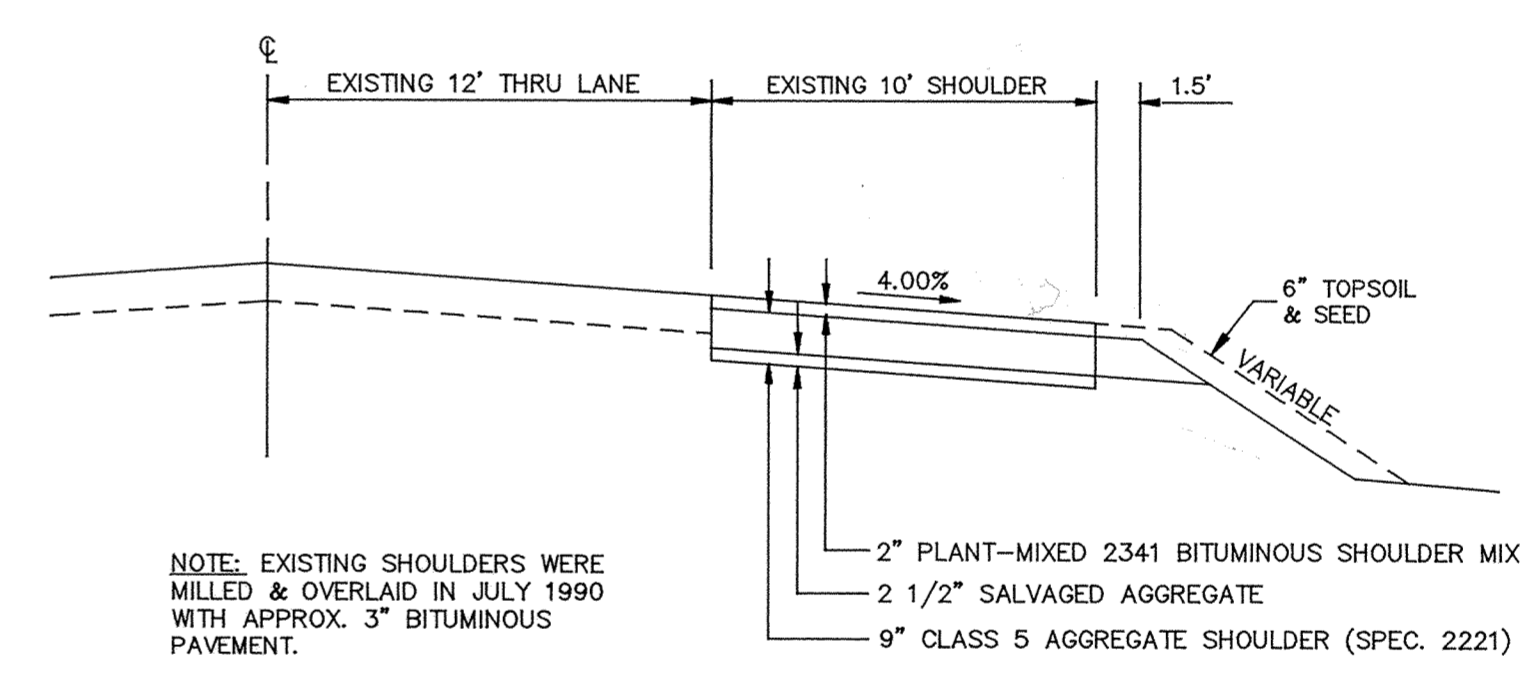
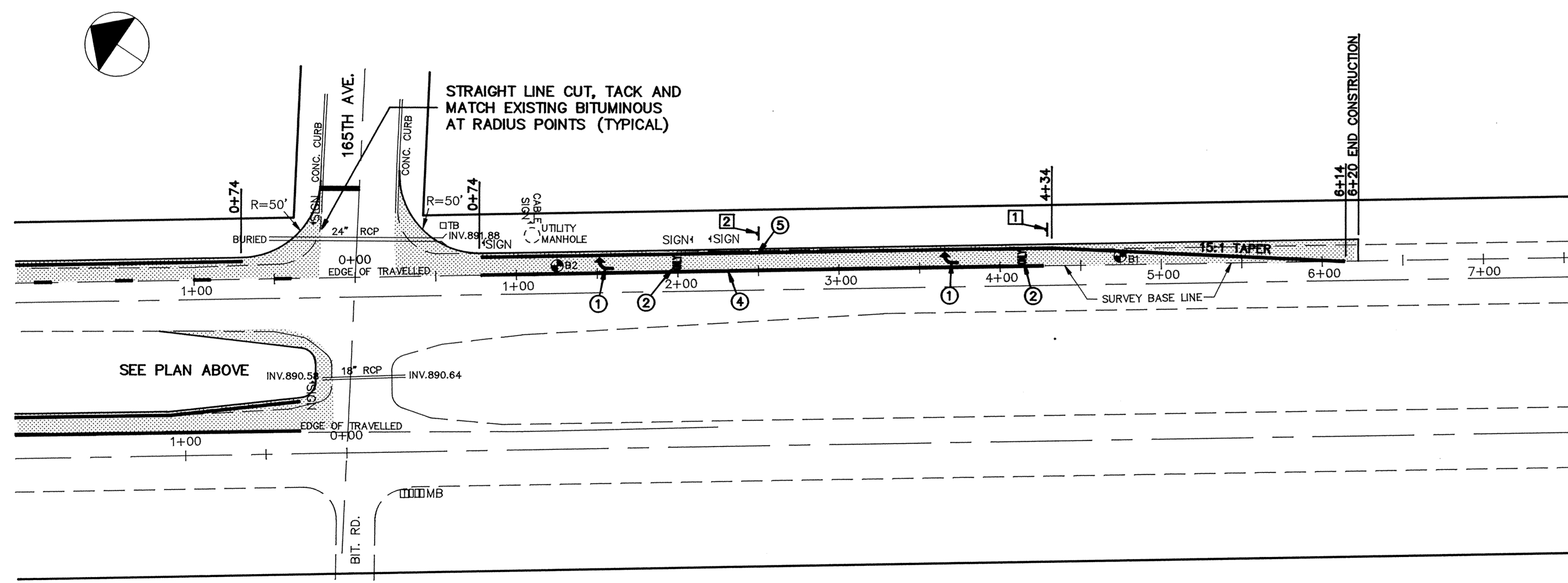


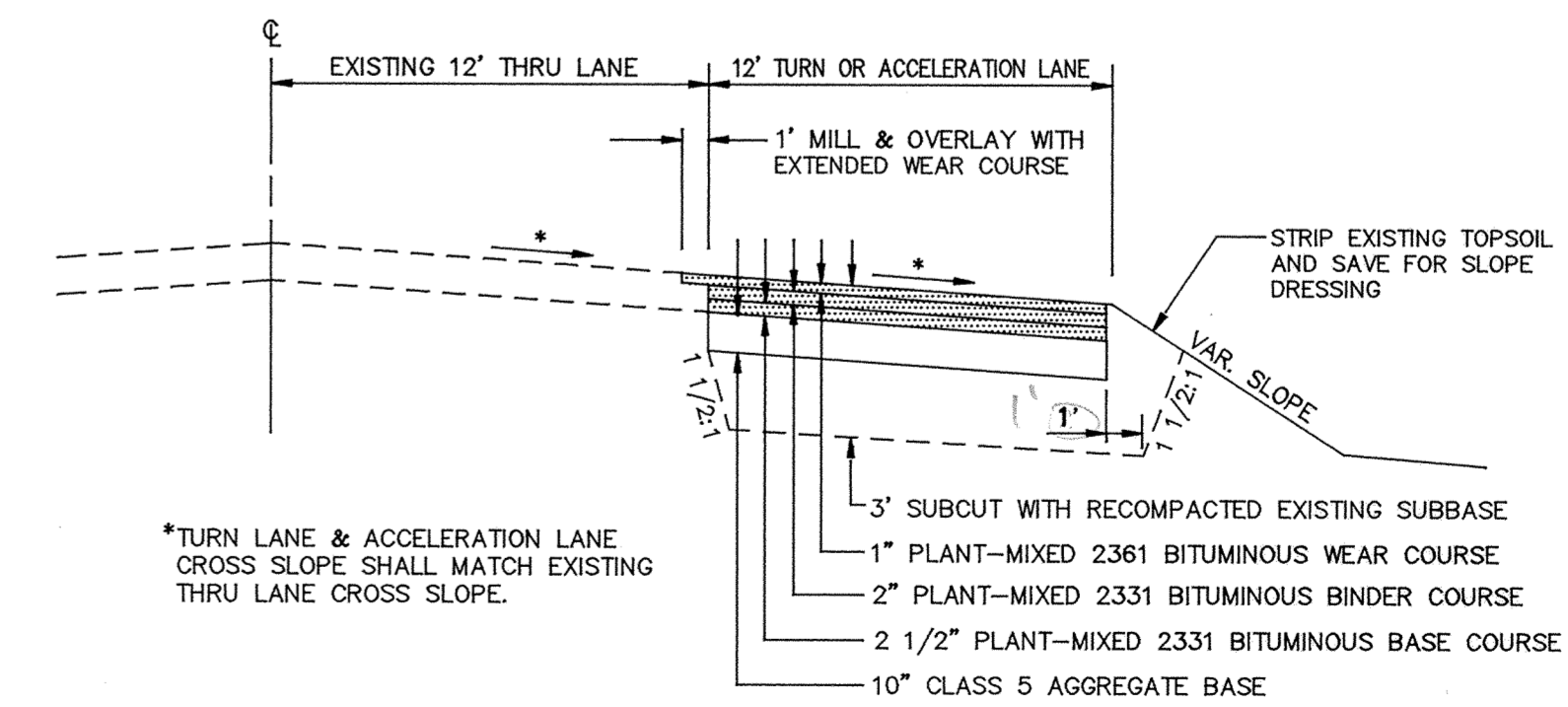
U.S. HIGHWAY 10 WEST OF 165TH AVENUE



U.S. HIGHWAY 10 EAST OF 165TH AVENUE



EXISTING TYPICAL SECTION (1968)



PROPOSED TYPICAL SECTION

PROPOSED AUXILIARY LANES AND MEDIAN WIDENING

I HEREBY CERTIFY THAT THIS PLAN, SPECIFICATION, OR REPORT WAS PREPARED BY ME OR UNDER MY DIRECT SUPERVISION AND THAT I AM A DULY REGISTERED PROFESSIONAL ENGINEER UNDER THE LAWS OF THE STATE OF MINNESOTA.

Ferry J. Mann

DATE 8/15/90 REG. NO. 15316

MSA CONSULTING ENGINEERS
Maier Stewart & Associates Inc.
1959 SLOAN PLACE (612) 774-6021 ST. PAUL, MINNESOTA 55117

DATE	DESCRIPTION	DESIGNED	CHKD
		WKW	JEW
			GG

GRAPHIC SCALE
HORIZ. 50
VERT. 5

CITY OF ELK RIVER
TURN LANE CONSTRUCTION
U.S. HWY. 10 & 165TH AVE. INTERSECTION

DATE AUG. 1990 SHEET 3 OF 4 SHEETS PROJECT NO. 230-100

DRAWING NUMBER 10USHWY 90 360

DRAWING NUMBER 3

DRAWING NUMBER 360

SARCO PRODUCTS • NEW HOPE, MINNESOTA
REGISTERED BY PART NUMBER 6532

SARCO PRODUCTS • NEW HOPE, MINNESOTA
REGISTERED BY PART NUMBER 6532

SARCO PRODUCTS • NEW HOPE, MINNESOTA
REGISTERED BY PART NUMBER 6532

SARCO PRODUCTS • NEW HOPE, MINNESOTA
REGISTERED BY PART NUMBER 6532