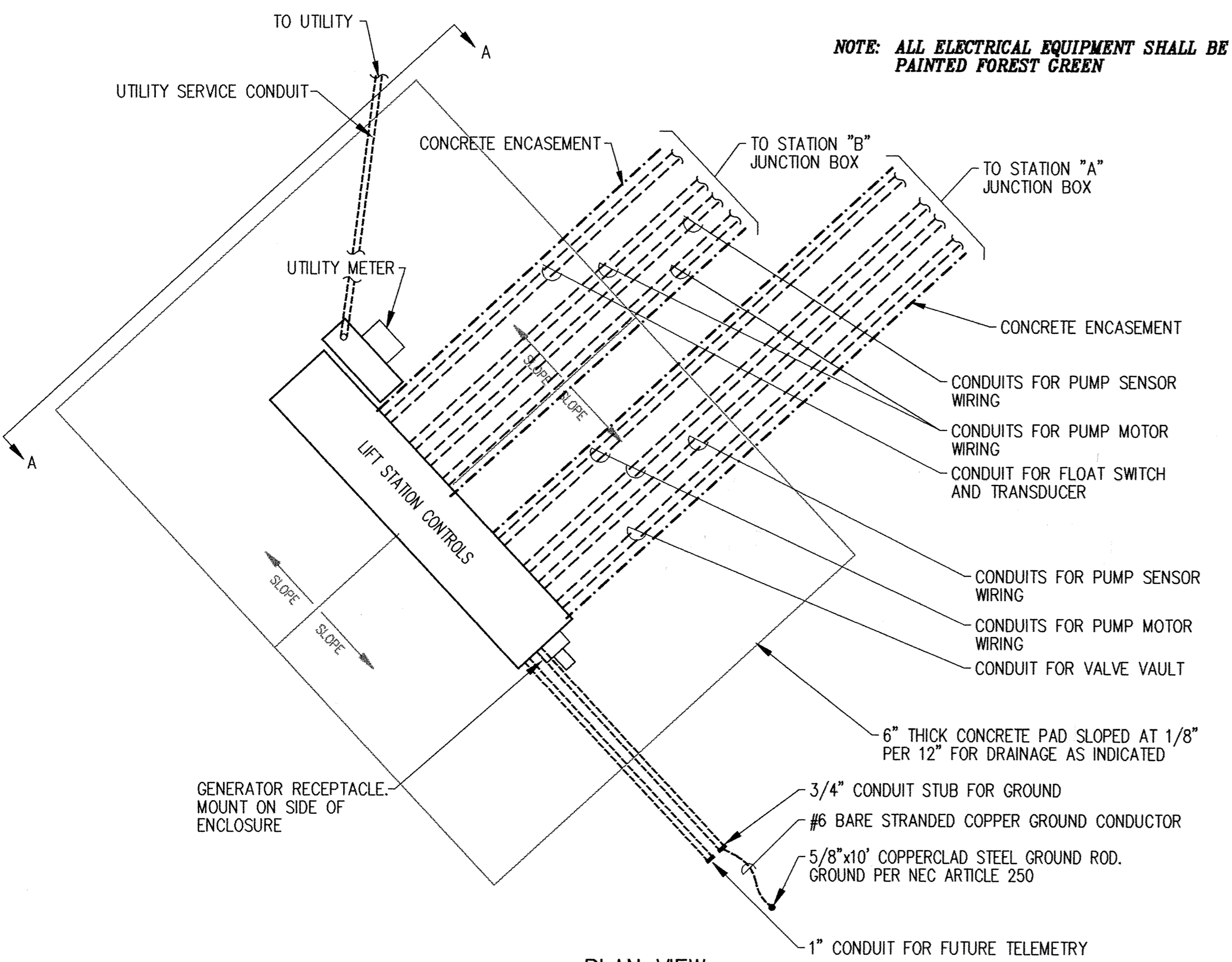


VIEW A-A



PLAN VIEW

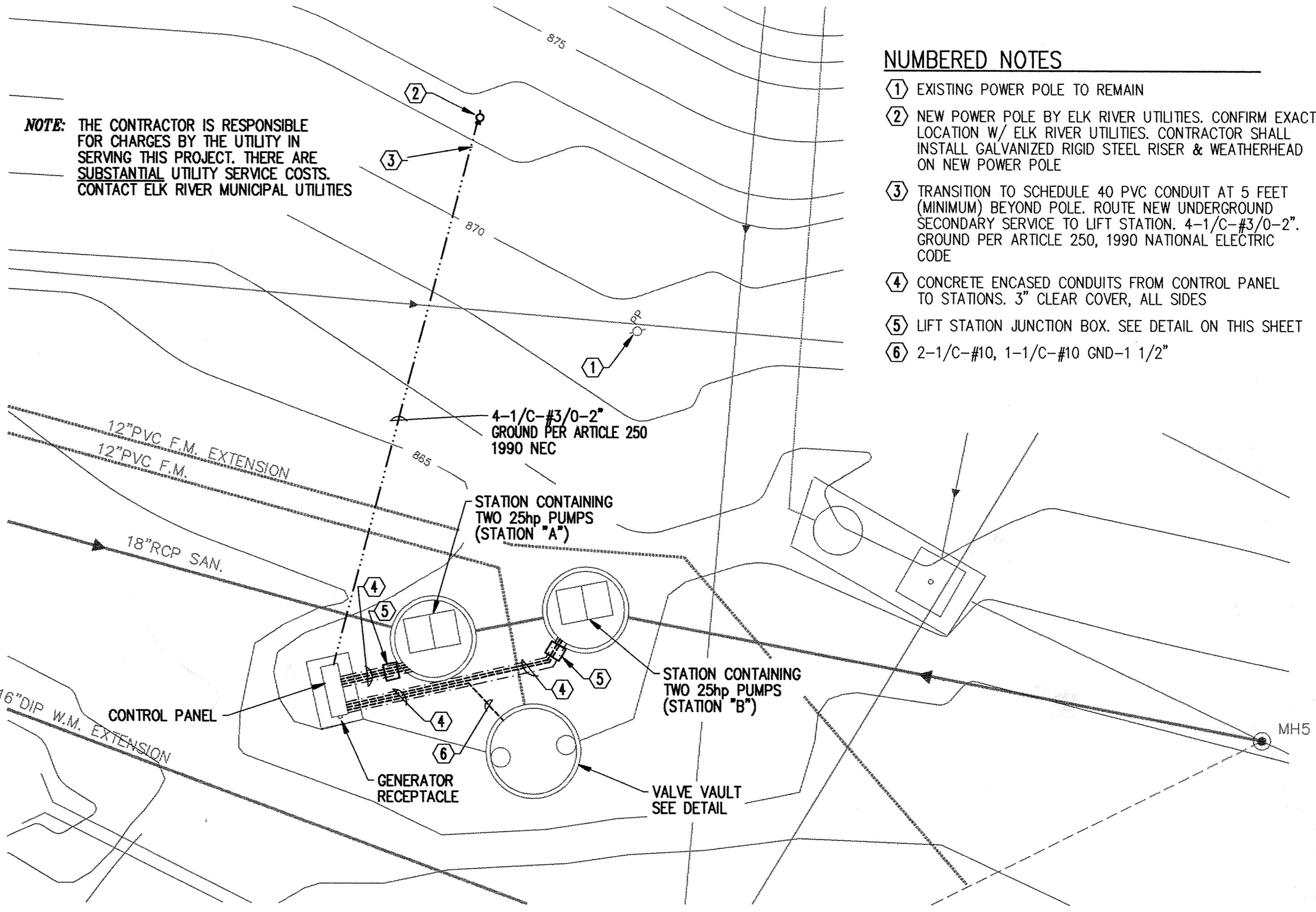
CONTROL PANEL DETAILS
SCALE: 3/4"=1'-0"

This drawing was prepared by:
Reading & Associates, Inc.
7300 France Avenue South
Suite 330
Minneapolis, MN 55435
Telephone: (612) 831-0317
Fax: (612) 831-2179

I hereby certify that this report, plan, or specification was prepared by me or under my direct supervision and I am a duly registered Professional Engineer under the laws of the State of Minnesota

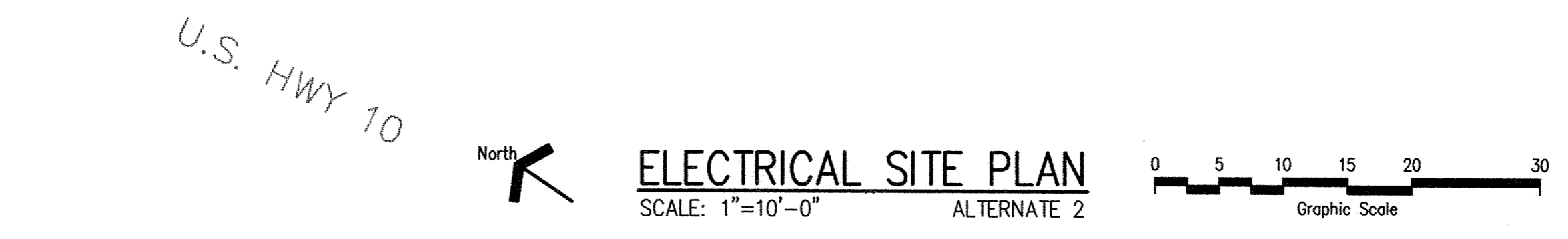
[Signature]
Date: 23 AUG 93 Registration No.: 9955

Maier Stewart & Associates Inc.
CONSULTING ENGINEERS
1959 SLOAN PLACE (612) 774-6021 ST. PAUL, MINNESOTA 55117
9800 SHELARD PARKWAY (612) 546-0432 MINNEAPOLIS, MINNESOTA 55441

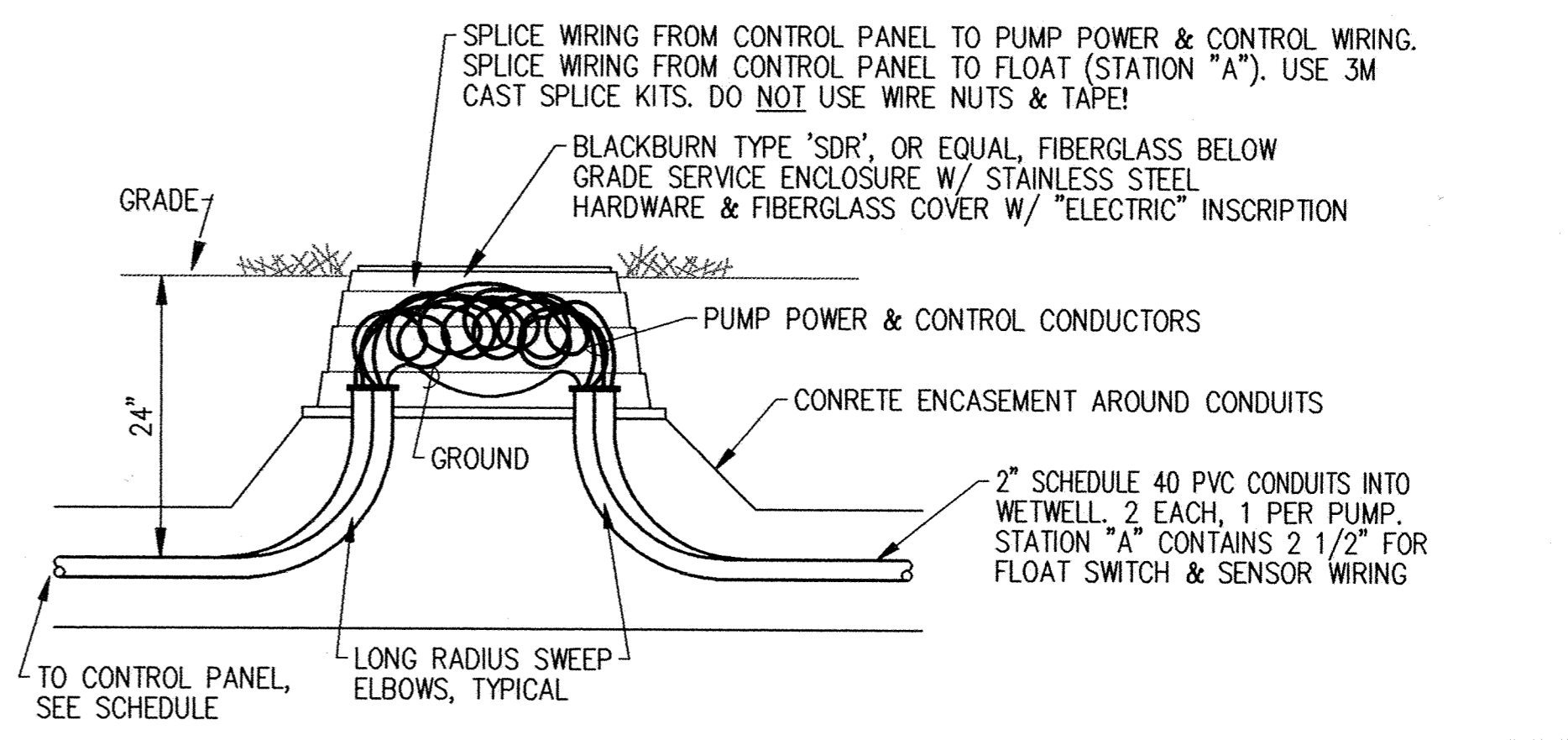


NOTE: THE CONTRACTOR IS RESPONSIBLE FOR CHARGES BY THE UTILITY IN SERVING THIS PROJECT. THERE ARE SUBSTANTIAL UTILITY SERVICE COSTS. CONTACT ELK RIVER MUNICIPAL UTILITIES

- NUMBERED NOTES**
- ① EXISTING POWER POLE TO REMAIN
 - ② NEW POWER POLE BY ELK RIVER UTILITIES. CONFIRM EXACT LOCATION W/ ELK RIVER UTILITIES. CONTRACTOR SHALL INSTALL GALVANIZED RIGID STEEL RISER & WEATHERHEAD ON NEW POWER POLE
 - ③ TRANSITION TO SCHEDULE 40 PVC CONDUIT AT 5 FEET (MINIMUM) BEYOND POLE. ROUTE NEW UNDERGROUND SECONDARY SERVICE TO LIFT STATION. 4-1/C-#3/0-2". GROUND PER ARTICLE 250, 1990 NATIONAL ELECTRIC CODE
 - ④ CONCRETE ENCASED CONDUITS FROM CONTROL PANEL TO STATIONS. 3" CLEAR COVER, ALL SIDES
 - ⑤ LIFT STATION JUNCTION BOX. SEE DETAIL ON THIS SHEET
 - ⑥ 2-1/C-#10, 1-1/C-#10 GND-1 1/2"



STATION PUMP WIRING REQUIREMENTS				
CONDUIT	FROM	TO	REQUIREMENTS	USE
1	CONTROL PANEL	JUNCTION BOX "A"	3-1/C-#6 1-1/C-#6 GND 1 1/2"	PUMP 1
2	CONTROL PANEL	JUNCTION BOX "A"	3-1/C-#6 1-1/C-#6 GND 1 1/2"	PUMP 2
3	CONTROL PANEL	JUNCTION BOX "A"	3-1/C-#12 1-1/C-#12 GND 1 1/2"	FLOAT & TRANSDUCER
4	CONTROL PANEL	JUNCTION BOX "B"	3-1/C-#6 1-1/C-#6 GND 1 1/2"	PUMP 3
5	CONTROL PANEL	JUNCTION BOX "B"	3-1/C-#6 1-1/C-#6 GND 1 1/2"	PUMP 4
6	CONTROL PANEL	JUNCTION BOX "A"	4-1/C-#12 1-1/C-#12 GND 1 1/2"	PUMP SENSORS
7	CONTROL PANEL	JUNCTION BOX "B"	4-1/C-#12 1-1/C-#12 GND 1 1/2"	PUMP SENSORS



LIFT STATION JUNCTION BOX DETAIL
NO SCALE TYPICAL

RECORD PLAN
JUNE 1994

CITY OF ELK RIVER
HIGHWAY 10 LIFT STATION
ALTERNATE 2 QUAD LIFT STATION ELECTRICAL SITE PLAN

DESIGNED PFK
CHECKED PFK
DRAWN CPM

GRAPHIC SCALE
0 HORIZ.
0 VERT.

DATE AUG. 1993 SHEET 20 OF 20 SHEETS PROJECT NO. 230-178