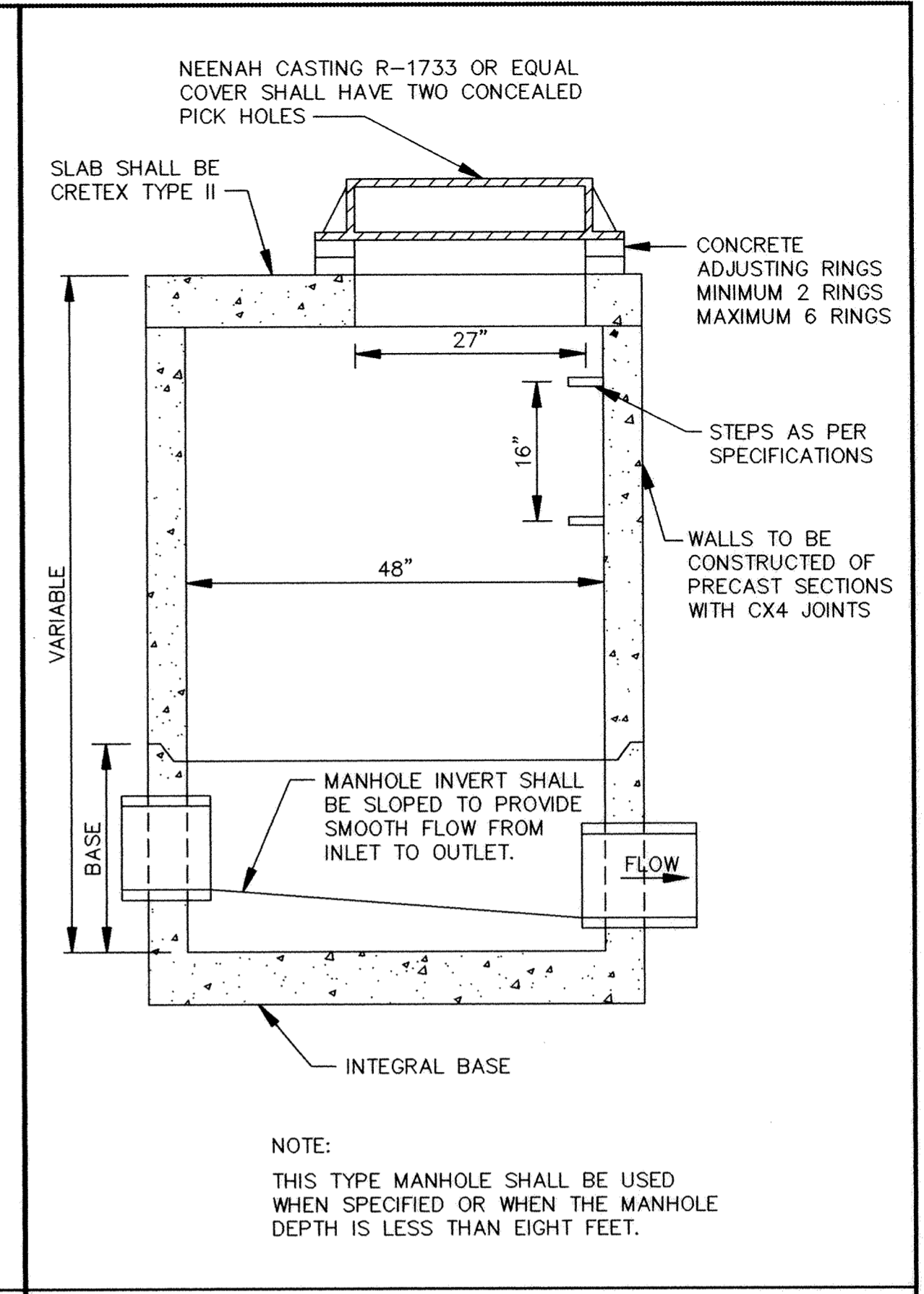
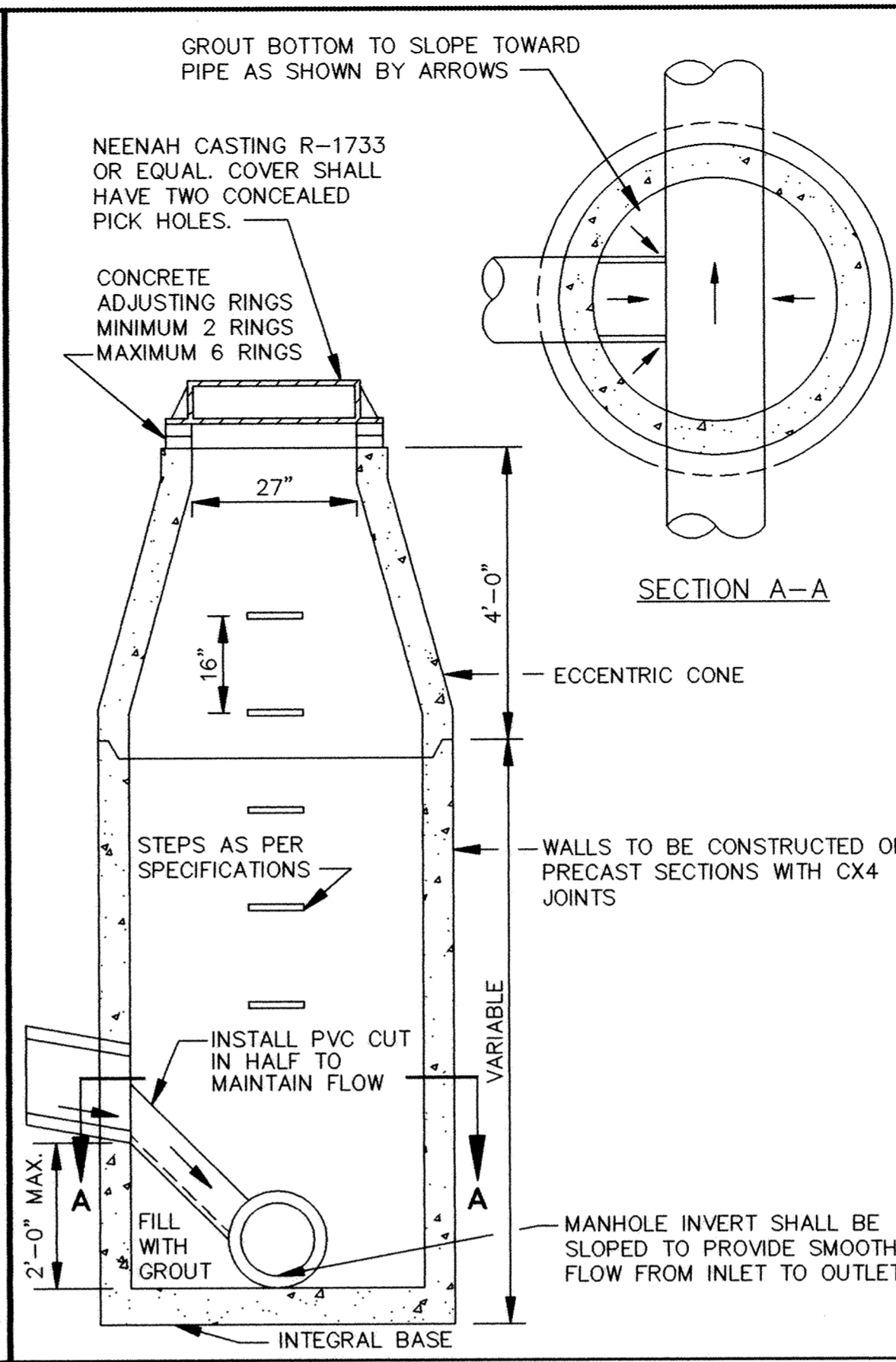


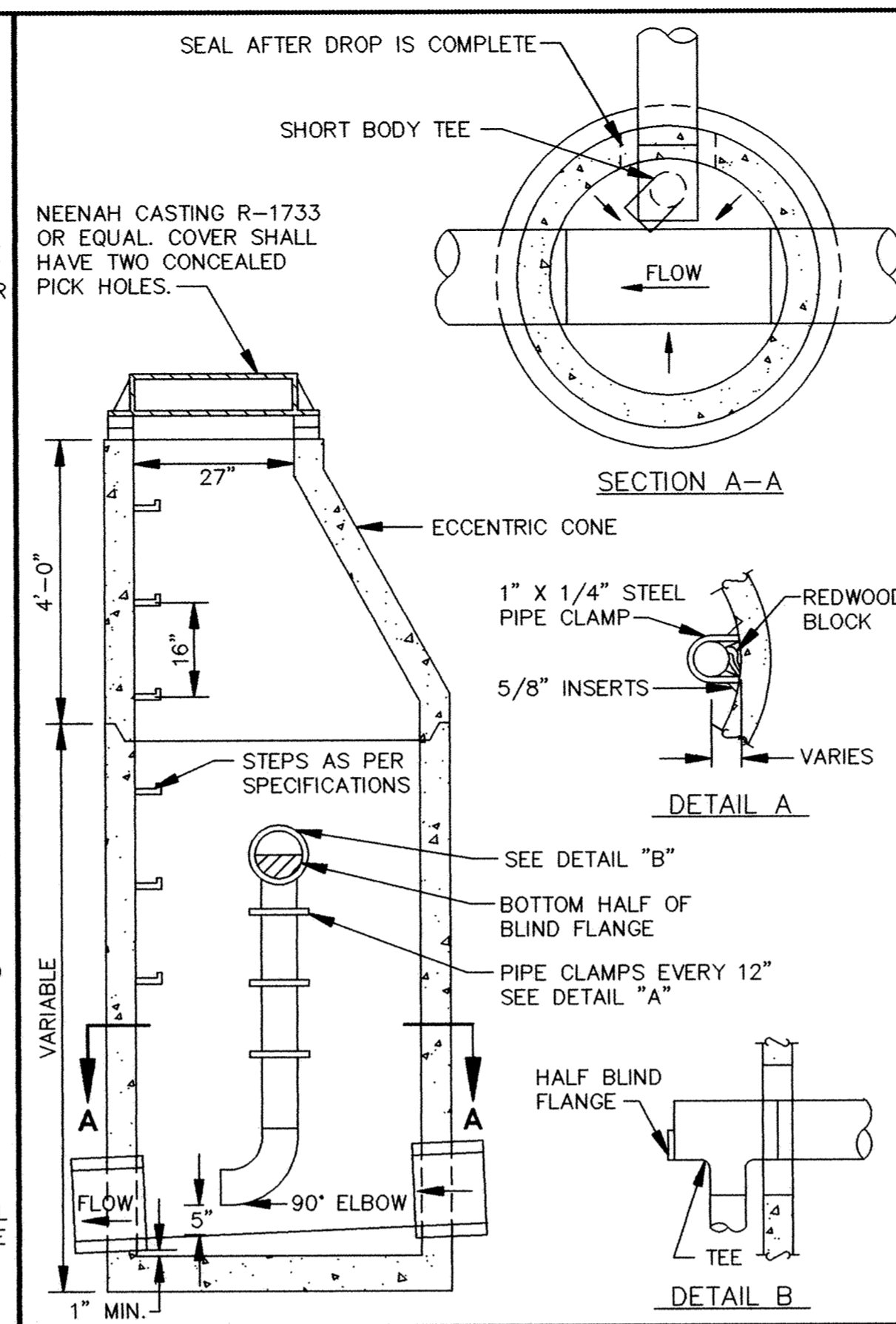
SARCO PRODUCTS • NEW HOPE, MINNESOTA
REORDER BY PART NUMBER 8552
SARCO PRODUCTS • NEW HOPE, MINNESOTA
REORDER BY PART NUMBER 8552
SARCO PRODUCTS • NEW HOPE, MINNESOTA
REORDER BY PART NUMBER 8552
SARCO PRODUCTS • NEW HOPE, MINNESOTA
REORDER BY PART NUMBER 8552



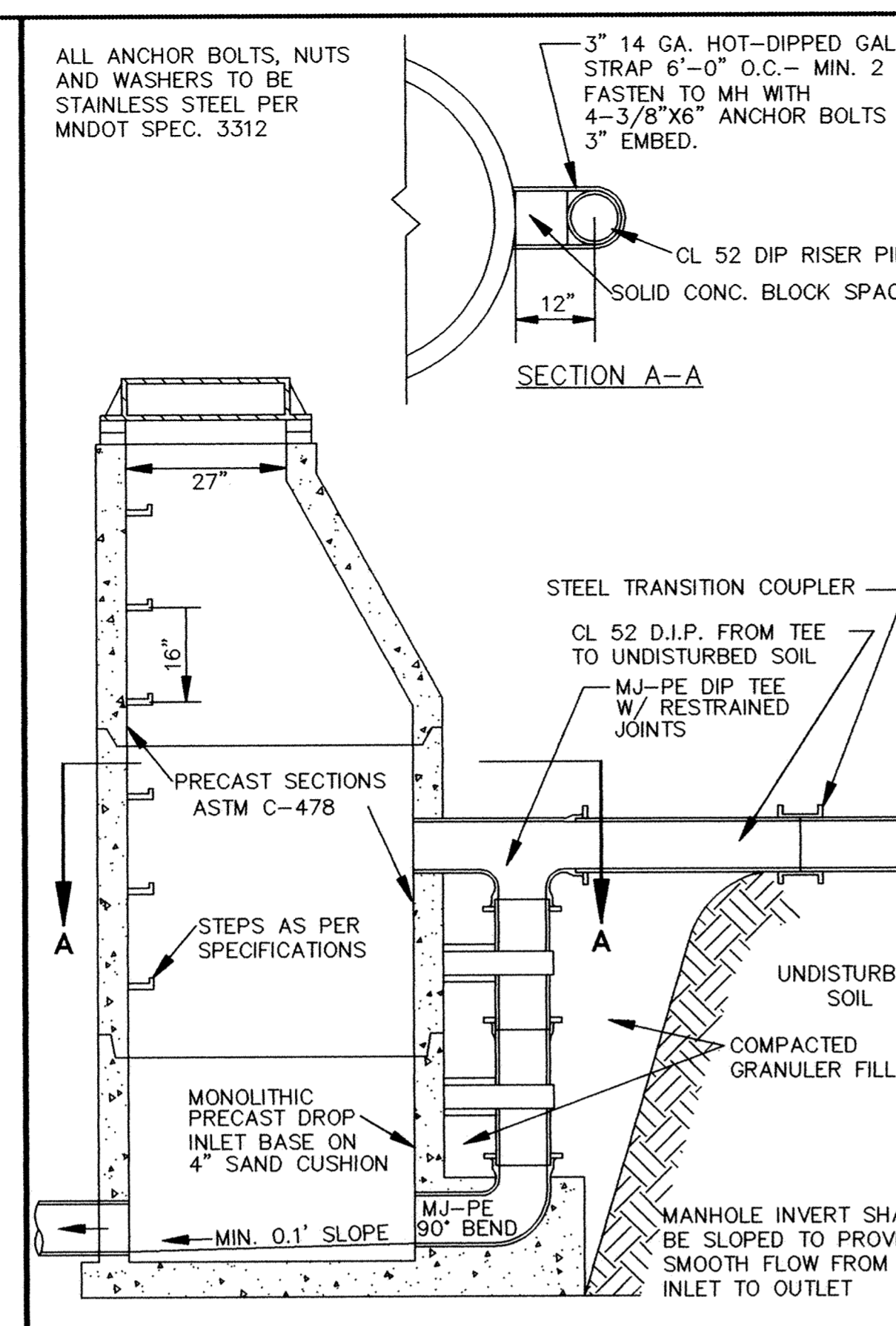
SLAB TOP MANHOLE



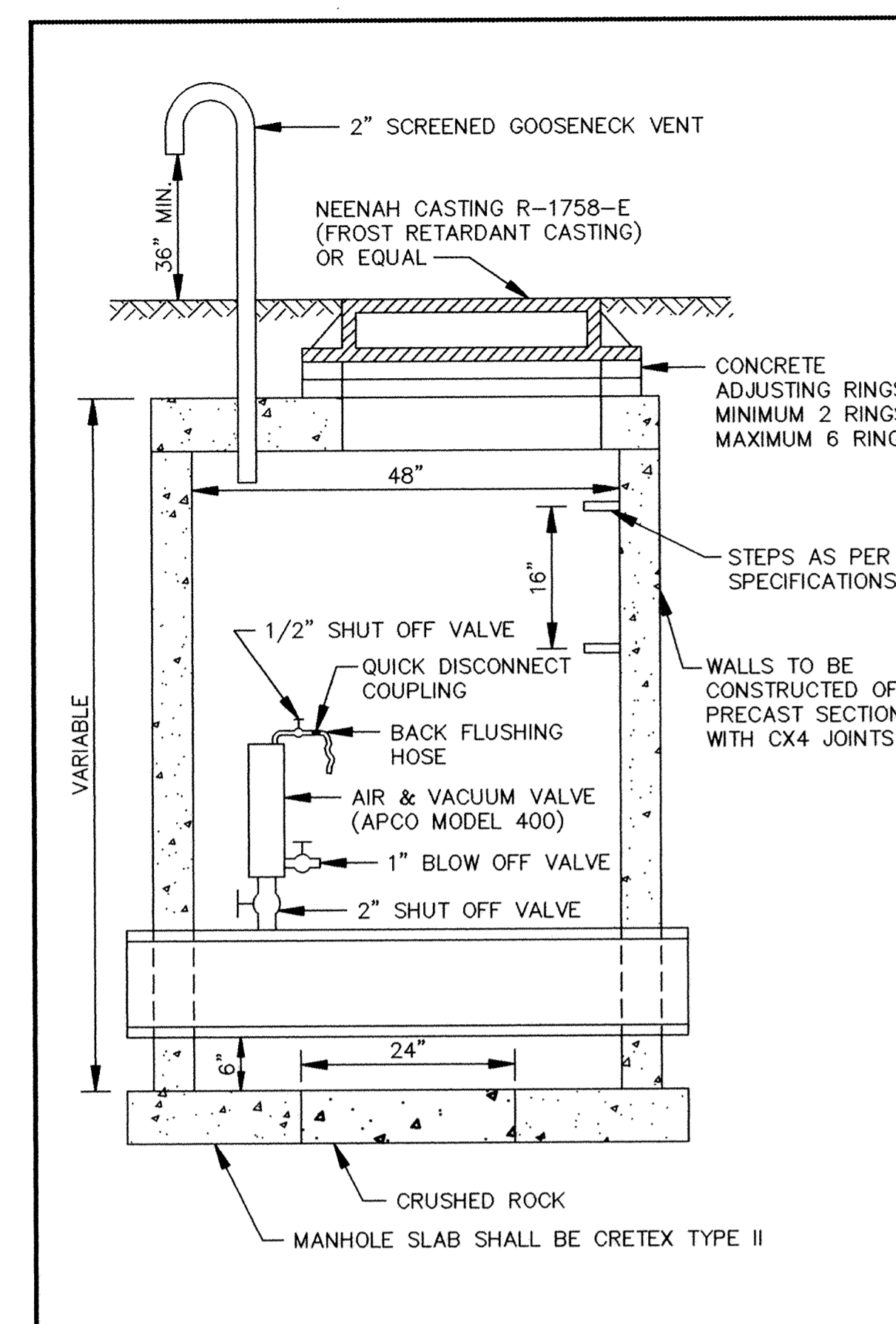
INSIDE DROP MANHOLE (TWO FEET OR LESS)



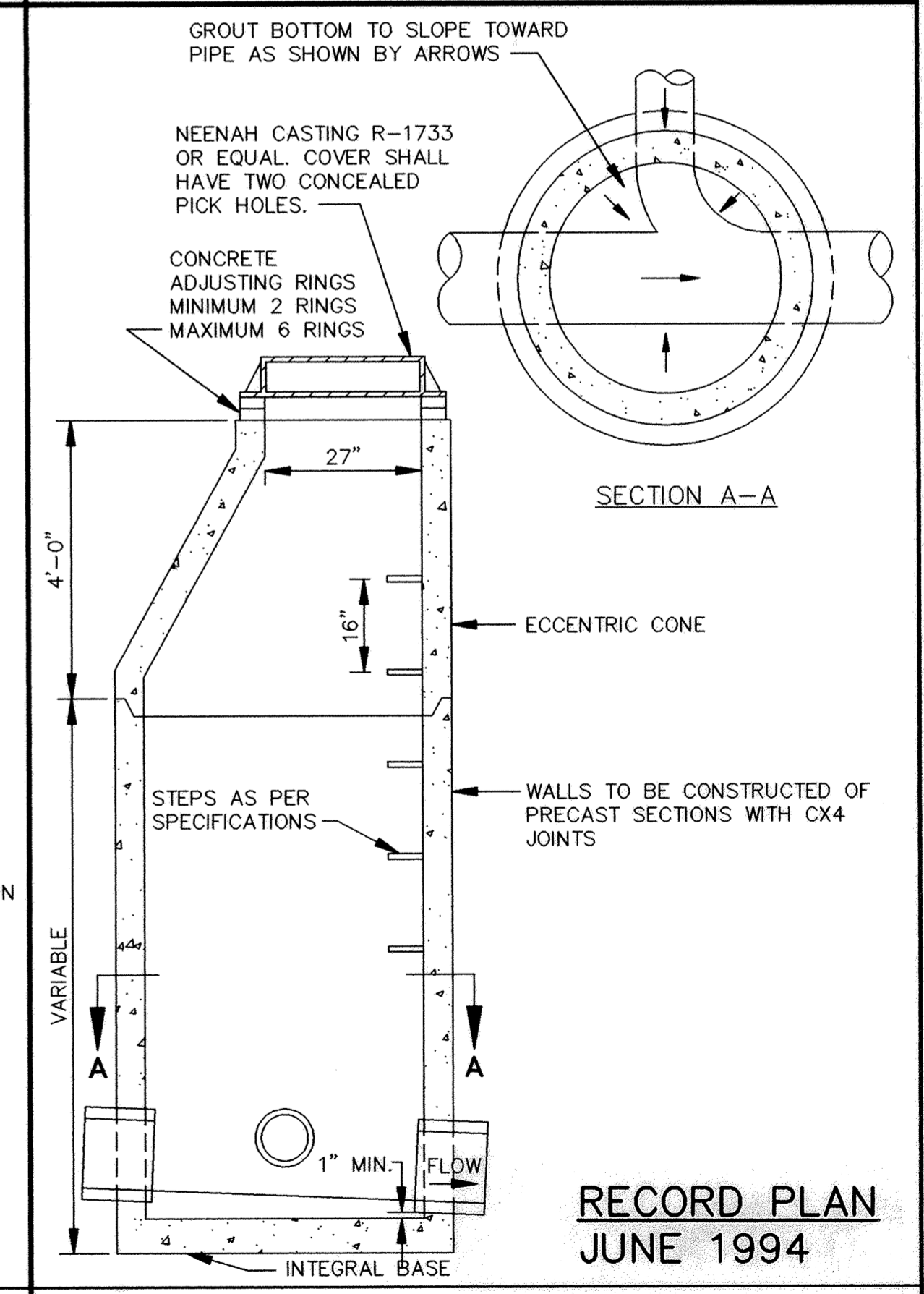
INSIDE DROP MANHOLE



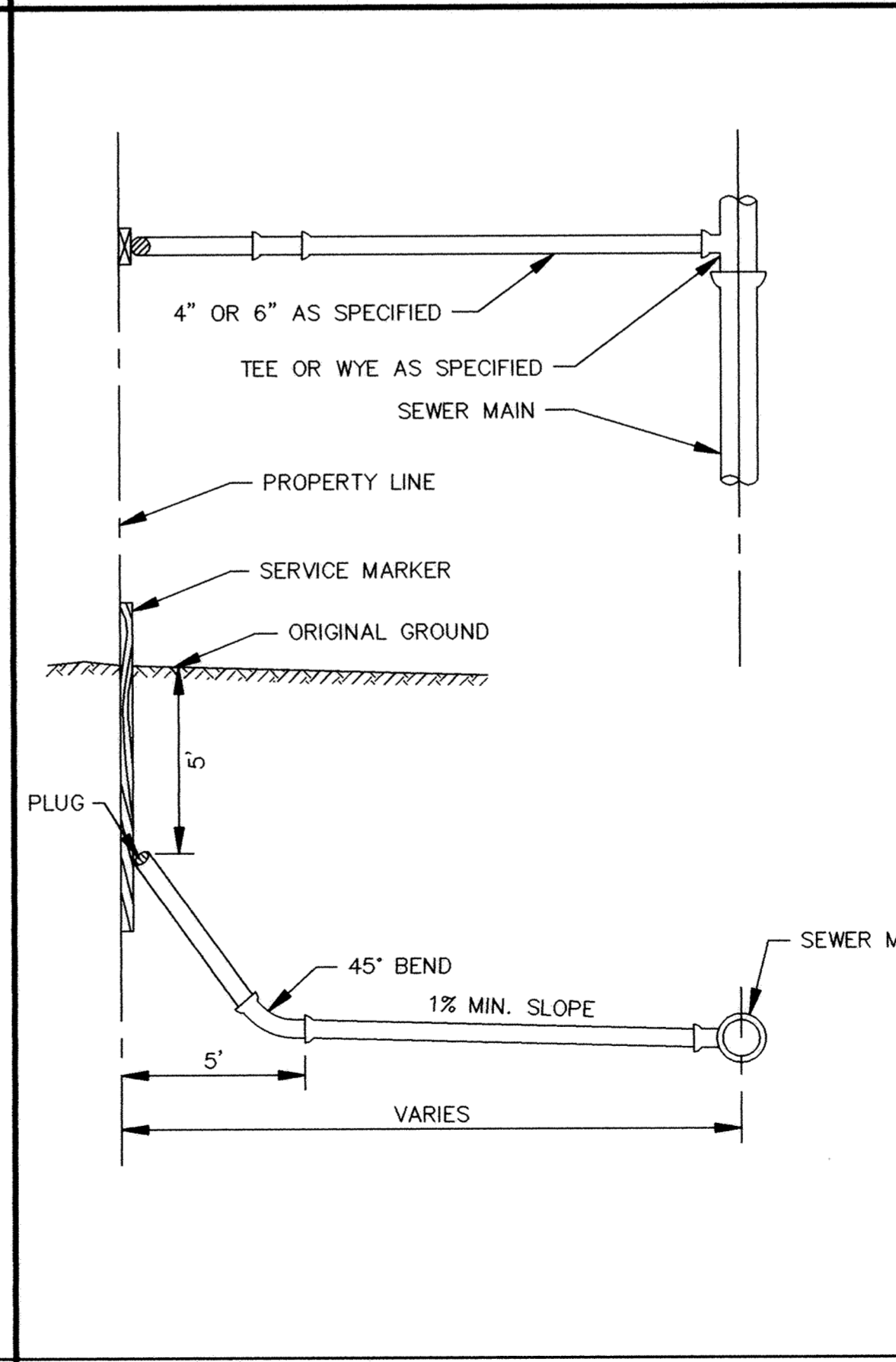
OUTSIDE DROP MANHOLE



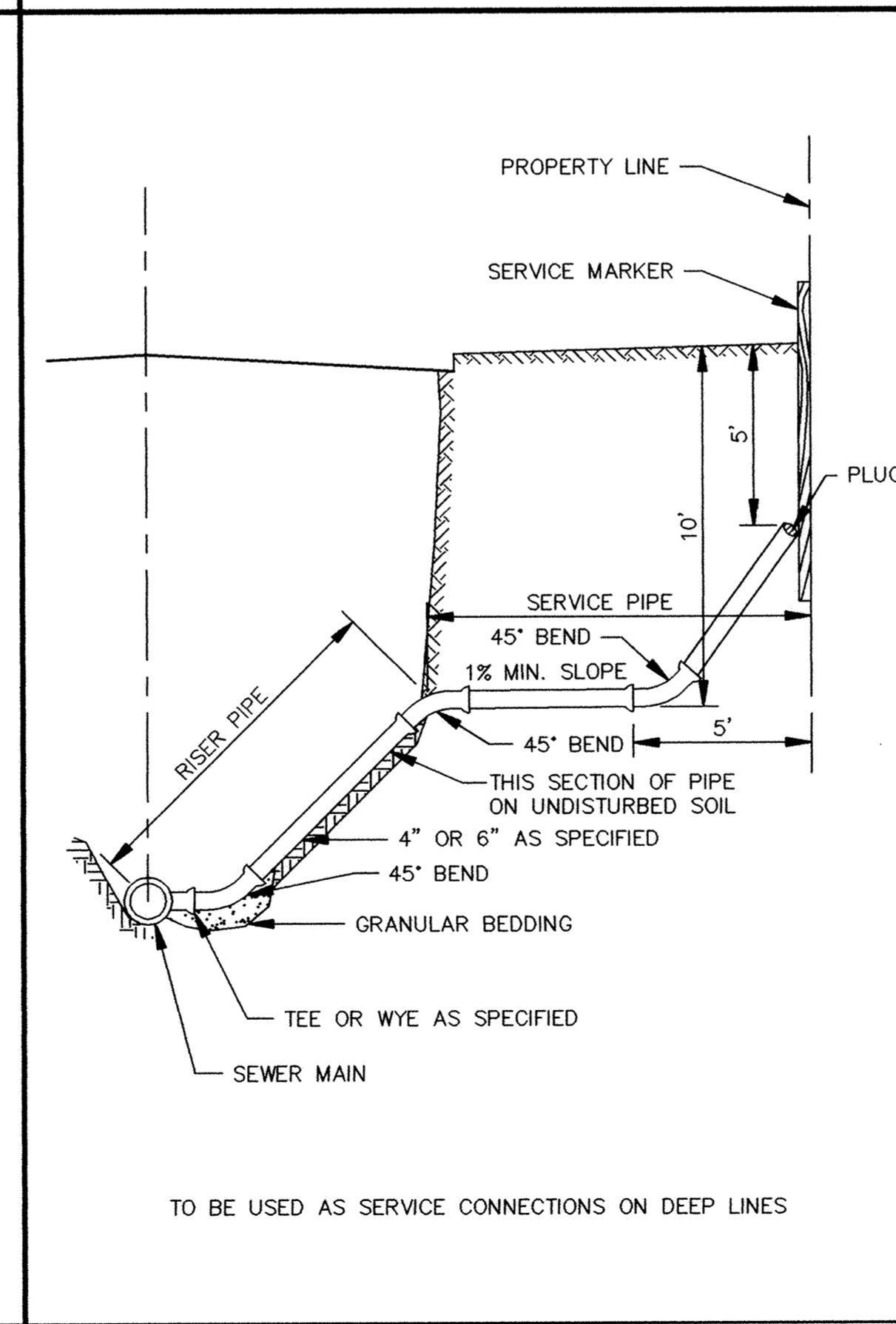
STANDARD AIR RELIEF MANHOLE



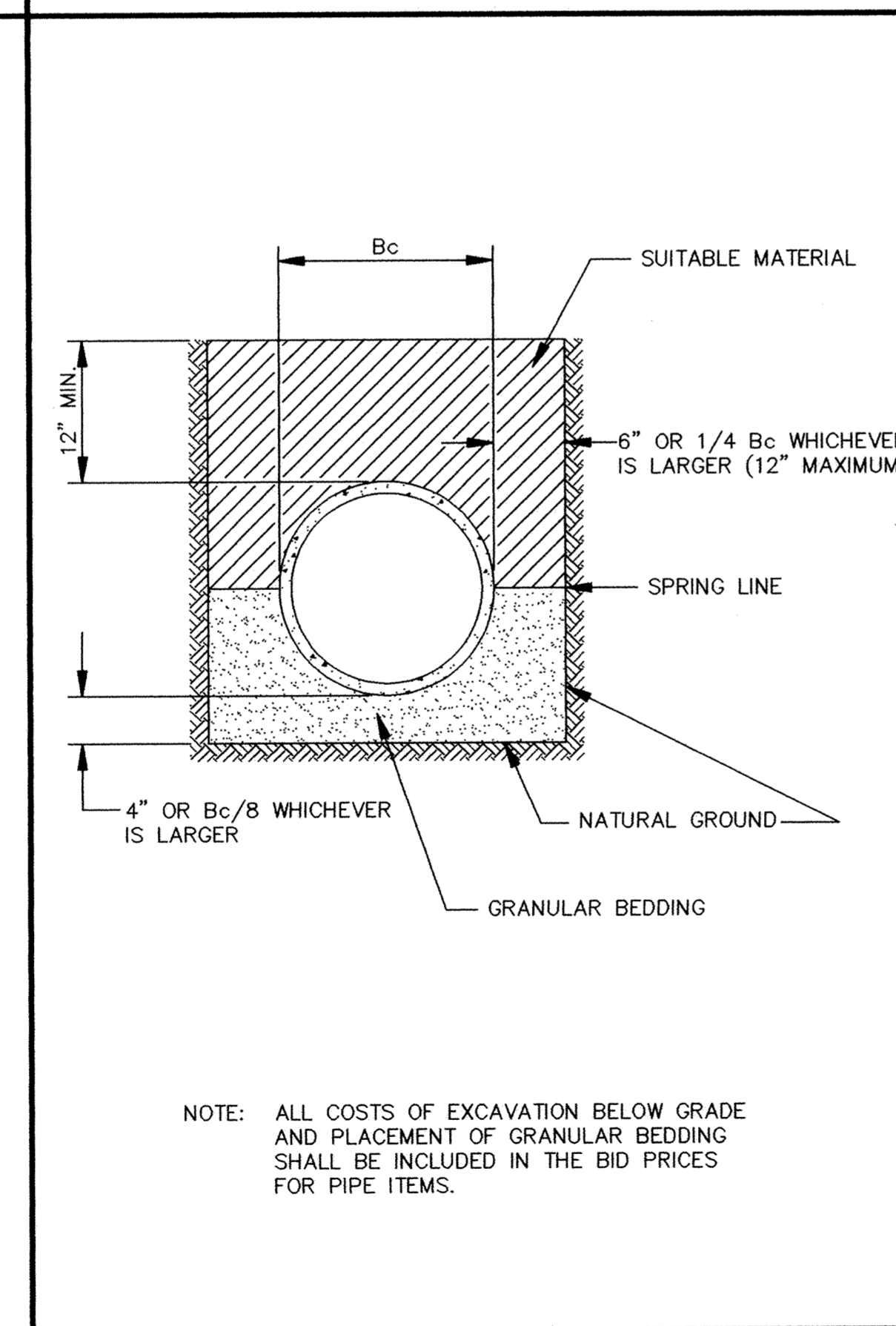
STANDARD MANHOLE



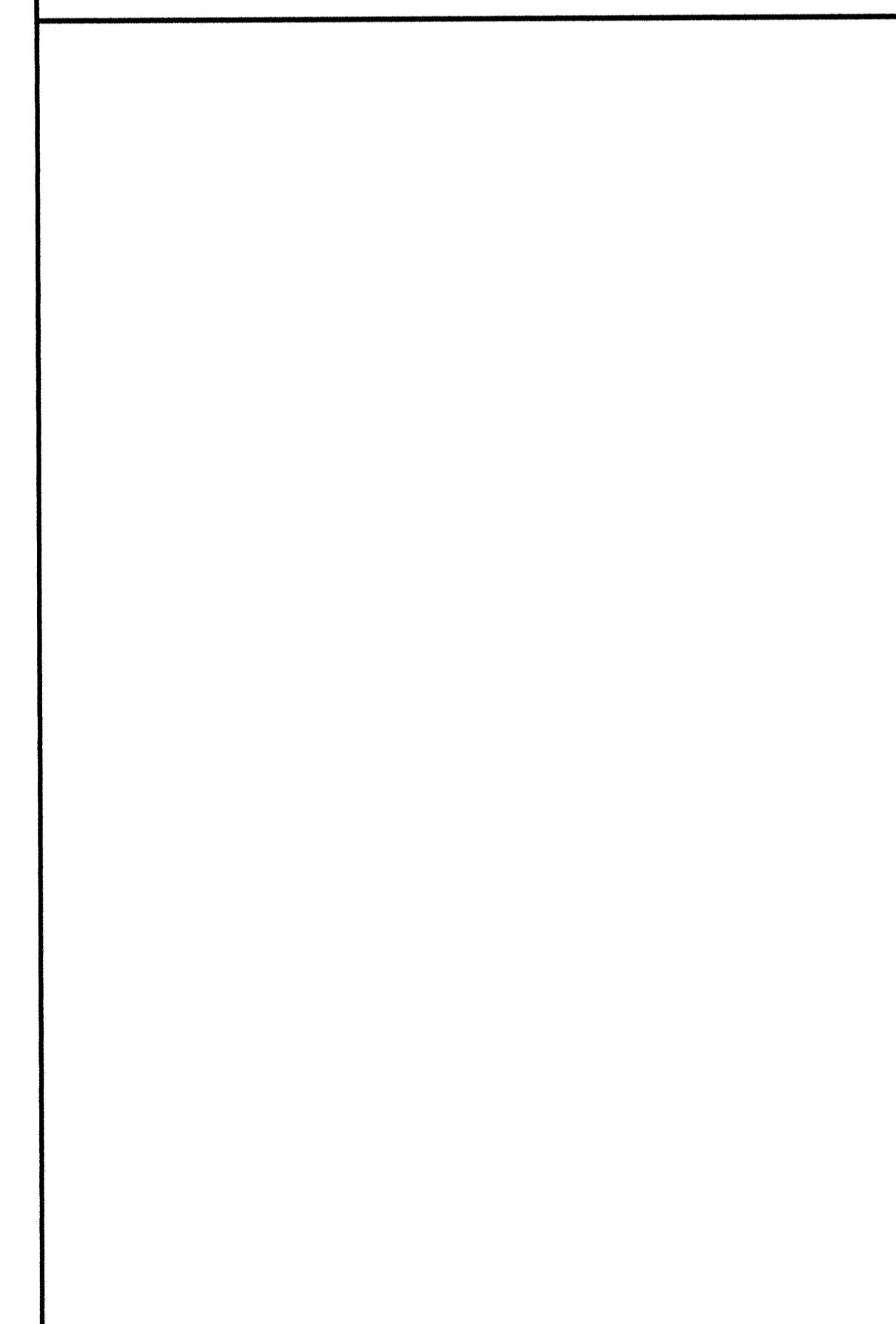
TYPICAL HOUSE SERVICE



SERVICE RISER SECTION



CLASS B PIPE BEDDING



CLASS B PIPE BEDDING

I HEREBY CERTIFY THAT THIS PLAN, SPECIFICATION, OR REPORT WAS PREPARED BY ME OR UNDER MY DIRECT SUPERVISION AND THAT I AM A DULY REGISTERED PROFESSIONAL ENGINEER UNDER THE LAWS OF THE STATE OF MINNESOTA.

DATE _____ REG. NO. _____

Maier Stewart & Associates Inc. CONSULTING ENGINEERS
1959 SLOAN PLACE (612) 774-6021 ST. PAUL, MINNESOTA 55117
9800 SHELARD PARKWAY (612) 546-0432 MINNEAPOLIS, MINNESOTA 55441

DATE	DESCRIPTION	DESIGNED	CHECKED

GRAPHIC SCALE
0 HORIZ. 2'
0 VERT. N/A

CITY OF ELK RIVER
HWY. 10 LIFT STATION
SANITARY SEWER DETAILS

DATE AUG 1993 SHEET 12 OF 20 SHEETS PROJECT NO. 230-178