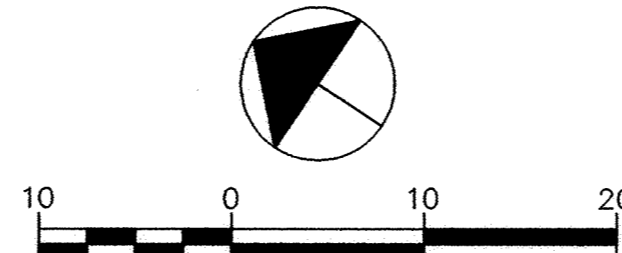
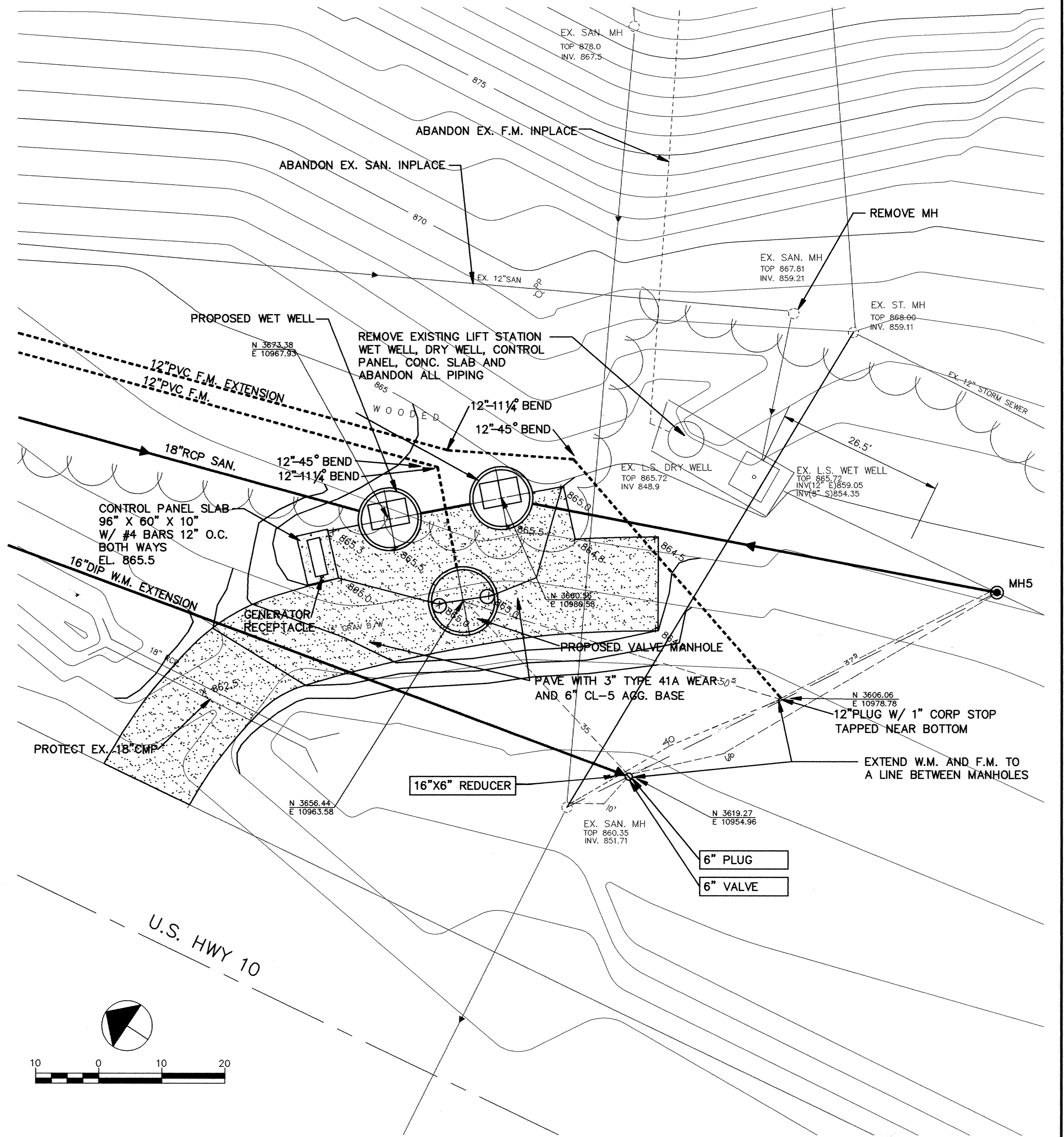


3:1 PRODUCTS • NEW HOPE, MINNESOTA
PROJECT BY PART NUMBER 6592

3:1 PRODUCTS • NEW HOPE, MINNESOTA
PROJECT BY PART NUMBER 6592

3:1 PRODUCTS • NEW HOPE, MINNESOTA
PROJECT BY PART NUMBER 6592

3:1 PRODUCTS • NEW HOPE, MINNESOTA
PROJECT BY PART NUMBER 6592



RECORD PLAN
JUNE 1994

I HEREBY CERTIFY THAT THIS PLAN, SPECIFICATION, OR REPORT WAS PREPARED BY ME OR UNDER MY DIRECT SUPERVISION AND THAT I AM A DULY REGISTERED PROFESSIONAL ENGINEER UNDER THE LAWS OF THE STATE OF MINNESOTA.

Bruce A. David
DATE 8/24/93 REG. NO. 14974

MSA CONSULTING ENGINEERS
Maier Stewart & Associates Inc.

1959 SLOAN PLACE (612) 774-8021 ST. PAUL, MINNESOTA 55117
9800 SHELARD PARKWAY (612) 546-0432 MINNEAPOLIS, MINNESOTA 55441

DATE	DESCRIPTION	DESIGNED
		CHECKED
		DRAWN

GRAPHIC SCALE
0 HORIZ. 10
0 VERT. NA

CITY OF ELK RIVER
HIGHWAY 10 LIFT STATION / TRUNK SEWER
ALTERNATE 2 QUAD LIFT STATION SITE PLAN

DATE AUG 1993 SHEET 10 OF 20 SHEETS PROJECT NO. 230-178