

SAFCO PRODUCTS • NEW HOPE, MINNESOTA
REPRODUCED BY PART NUMBER 8502
SAFCO PRODUCTS • NEW HOPE, MINNESOTA
REPRODUCED BY PART NUMBER 8502
SAFCO PRODUCTS • NEW HOPE, MINNESOTA
REPRODUCED BY PART NUMBER 8502

2003 RAW WATERMAIN IMPROVEMENTS

NOTE:
THESE PLANS HAVE BEEN REDUCED TO
APPROXIMATELY 1/2 THEIR ORIGINAL SIZE.
THESE 1/2 SIZE PLANS ARE TO BE USED
FOR BIDDING PURPOSES ONLY.

INDEX

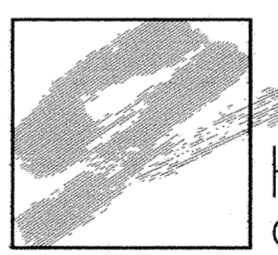
SHEET NO. 1	TITLE SHEET
SHEET NO. 2	LOCATION MAP
SHEET NO. 3-12	PLAN AND PROFILE
SHEET NO. 13	WATERMAIN DETAILS
SHEET NO. 14	VALVE STATION DETAILS
SHEET NO. 15-17	ACCESS ROAD
SHEET NO. 18-20	ACCESS ROAD CROSS SECTIONS

THIS PLAN CONTAINS 20 SHEETS

RECORD PLAN
JANUARY 2005

I HEREBY CERTIFY THAT THIS PLAN, SPECIFICATION,
OR REPORT WAS PREPARED BY ME OR UNDER MY DIRECT
SUPERVISION AND THAT I AM A DULY LICENSED
PROFESSIONAL ENGINEER UNDER THE LAWS OF THE
STATE OF MINNESOTA.

John Anderson JOHN ANDERSON
DATE 2/2/05 LIC. NO. 25889



1326 ENERGY PARK DRIVE
ST. PAUL, MINNESOTA 55108
(651) 644-4389
Howard R. Green Company
CONSULTING ENGINEERS

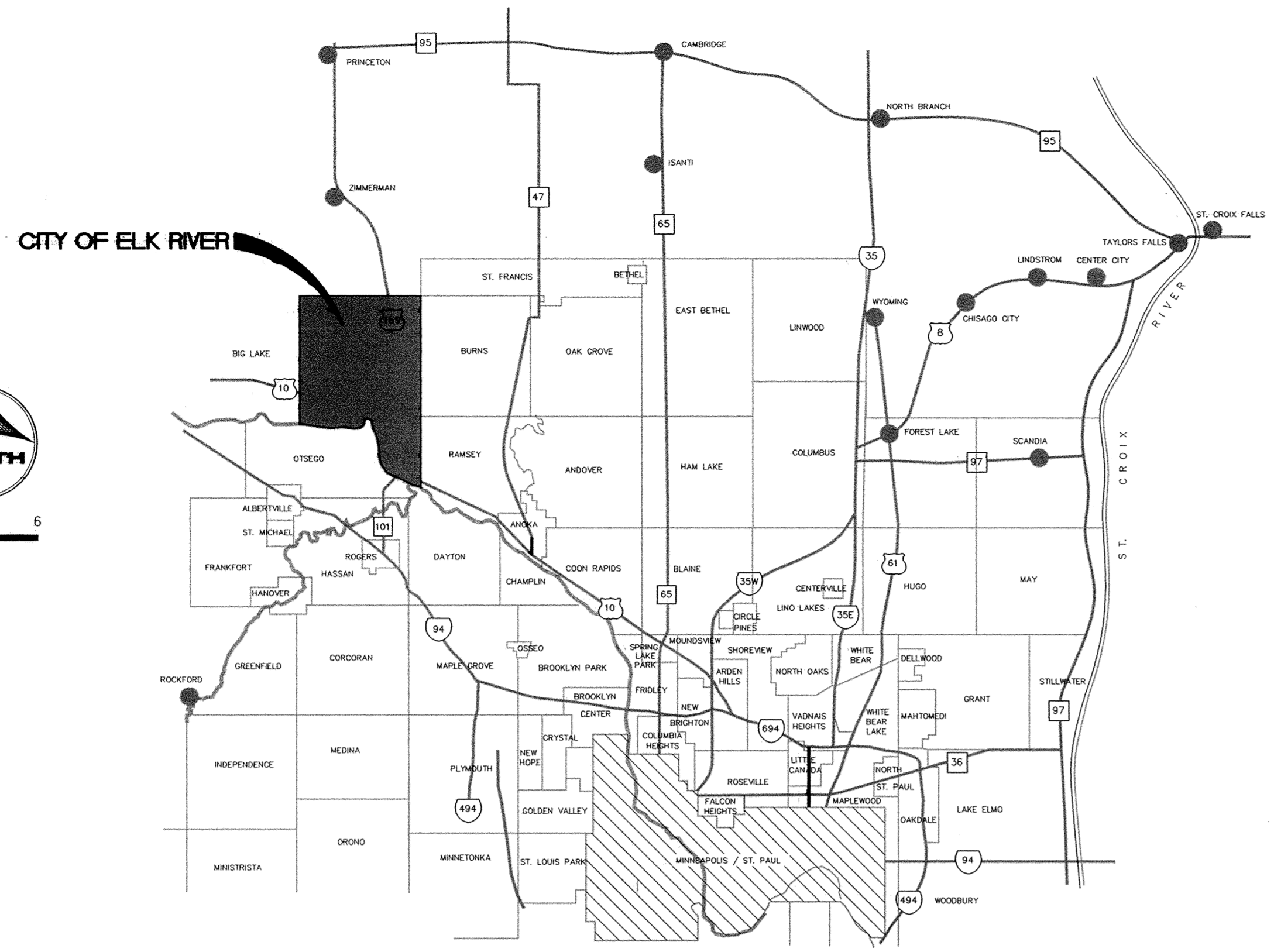
PREPARED FOR:

**THE CITY OF ELK RIVER
MUNICIPAL UTILITIES**

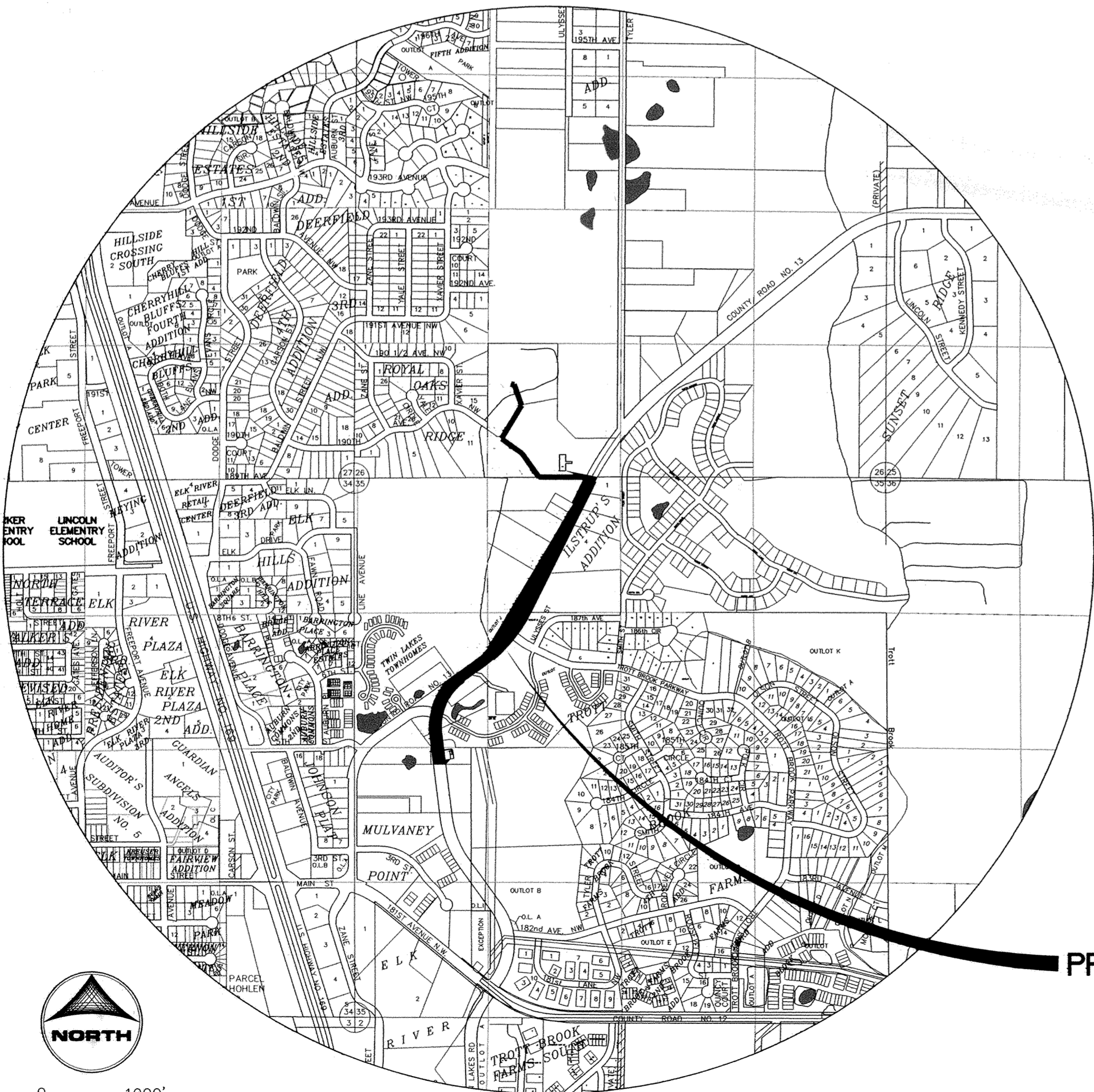


AUGUST, 2003

SHEET 1 OF 20



0 1 2 3 6
MILES



PROJECT LOCATION



0 1000'

LOCATION MAP