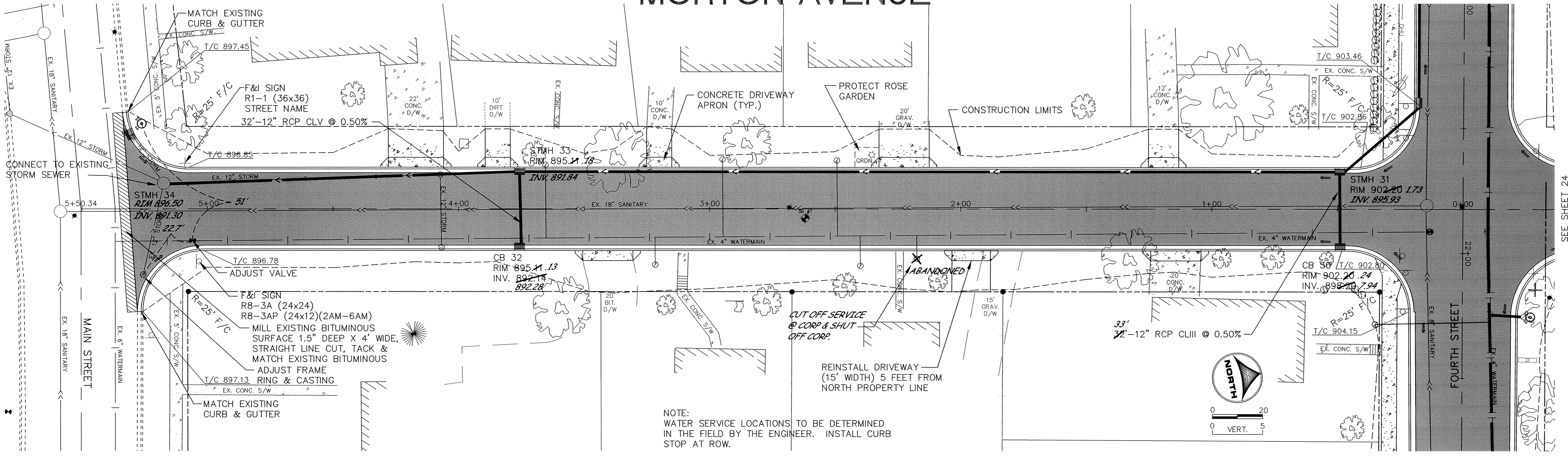


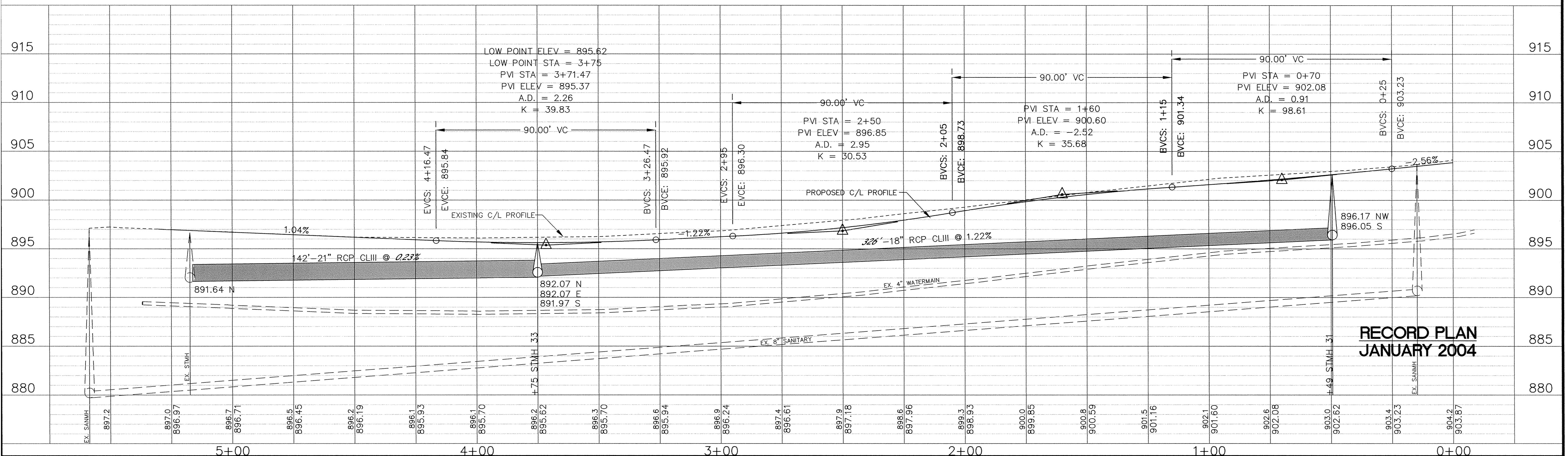
MORTON AVENUE

SEE SHEET 18



NOTE:
WATER SERVICE LOCATIONS TO BE DETERMINED
IN THE FIELD BY THE ENGINEER. INSTALL CURB
STOP AT ROW.

SEE SHEET 18



**RECORD PLAN
JANUARY 2004**

DESIGNED BY: DESIGNED BY: RKM
DRAWN BY: RKM
APPROVED BY: APPROVED BY: JOB NUMBER 818980J
CAD DATE: March 08, 2004 10:56:49 a.m.
CAD FILE: 818980J\As-built\C\CT-D10.DWG (TELGAAR)

I HEREBY CERTIFY THAT THIS PLAN, SPECIFICATION, OR REPORT
WAS PREPARED BY ME OR UNDER MY DIRECT SUPERVISION AND
THAT I AM A DULY LICENSED PROFESSIONAL ENGINEER UNDER
THE LAWS OF THE STATE OF MINNESOTA.
SIGNATURE: *Kristina Thompson* DATE: 4/2/04
PRINTED NAME: KRISTINA J. THOMPSON LIC. NO. 42350

NO.	DATE	BY	REVISION DESCRIPTION

1326 ENERGY PARK DRIVE
ST. PAUL, MINNESOTA 55108
(651) 644-4389
Howard R. Green Company

**2003 STREET IMPROVEMENTS
CITY OF ELK RIVER**

**PLAN AND PROFILE
MORTON AVENUE**
0+00 TO 5+50.34

SHEET NO.
23