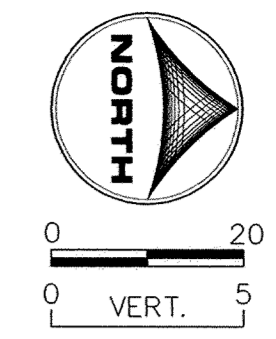
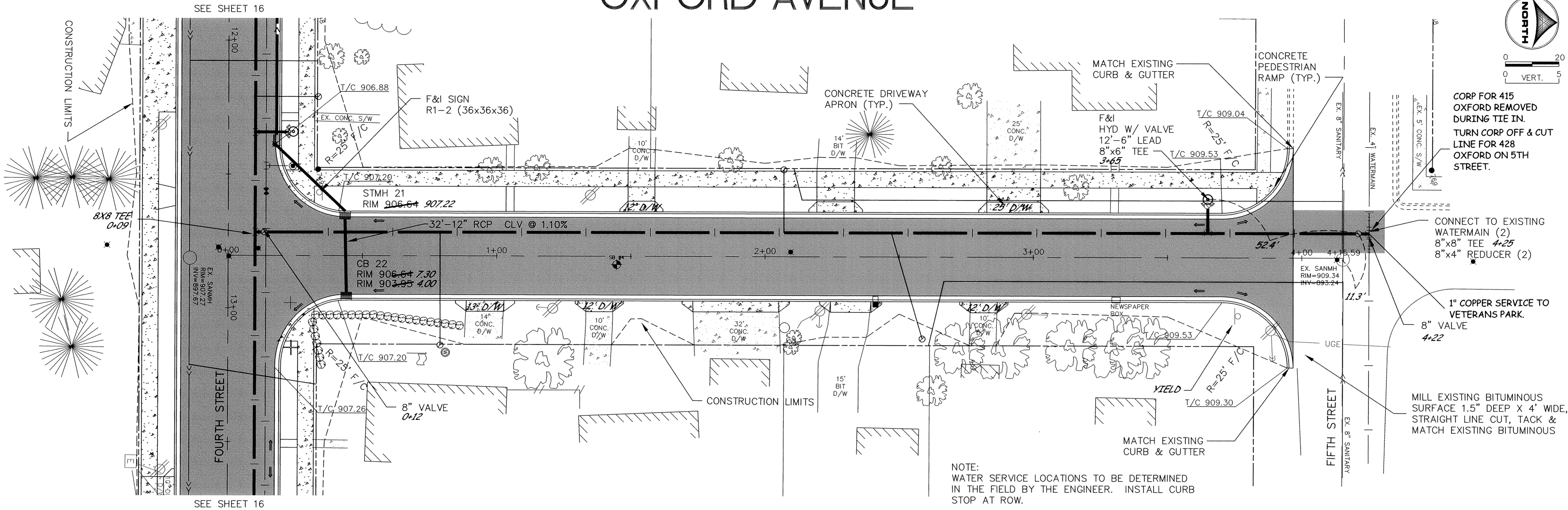


# OXFORD AVENUE



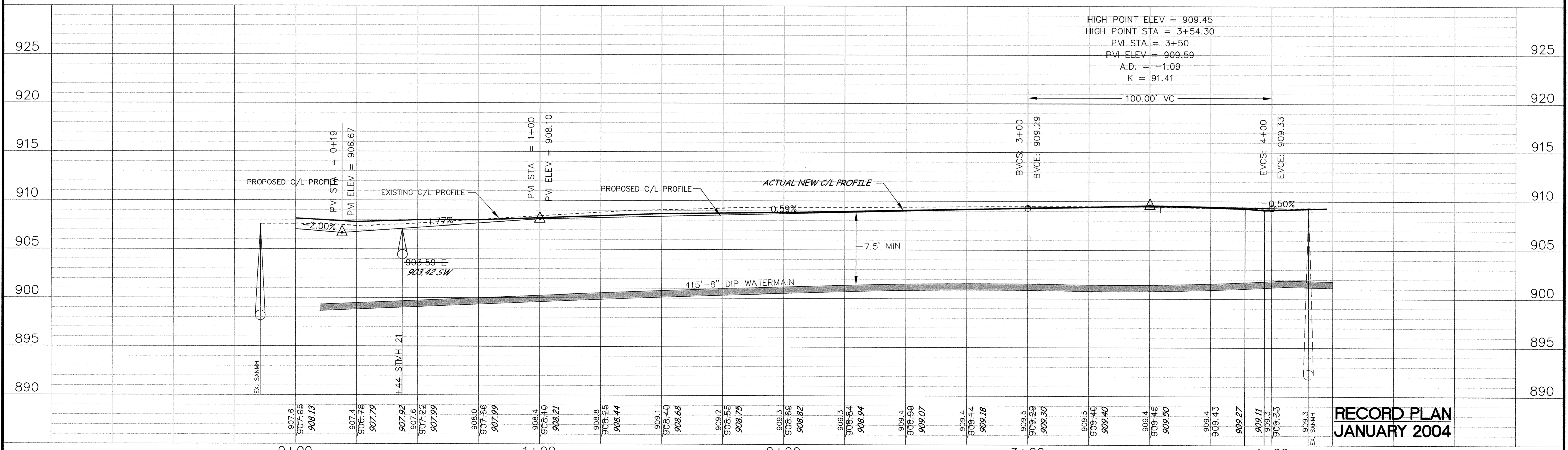
CORP FOR 415 OXFORD REMOVED DURING TIE IN. TURN CORP OFF & CUT LINE FOR 428 OXFORD ON 5TH STREET.

CONNECT TO EXISTING WATERMAIN (2) 8"x8" TEE 4+25 8"x4" REDUCER (2)

1" COPPER SERVICE TO VETERANS PARK. 8" VALVE 4+22

MILL EXISTING BITUMINOUS SURFACE 1.5" DEEP X 4' WIDE, STRAIGHT LINE CUT, TACK & MATCH EXISTING BITUMINOUS

NOTE: WATER SERVICE LOCATIONS TO BE DETERMINED IN THE FIELD BY THE ENGINEER. INSTALL CURB STOP AT ROW.



HIGH POINT ELEV = 909.45  
HIGH POINT STA = 3+54.30  
PVI STA = 3+50  
PVI ELEV = 909.59  
A.D. = -1.09  
K = 91.41

**RECORD PLAN**  
**JANUARY 2004**

DESIGNED BY: DESIGNED BY: DRAWN BY: RKM  
APPROVED BY: APPROVED BY: JOB NUMBER 818980J  
CAD DATE: March 08, 2004 9:12:46 a.m.  
CAD FILE: 818980J\As-built\C\CT-008.DWG (TELGAAR)

I HEREBY CERTIFY THAT THIS PLAN, SPECIFICATION, OR REPORT WAS PREPARED BY ME OR UNDER MY DIRECT SUPERVISION AND THAT I AM A DULY LICENSED PROFESSIONAL ENGINEER UNDER THE LAWS OF THE STATE OF MINNESOTA.  
SIGNATURE: *Kristina Thompson* DATE: 4/2/04  
PRINTED NAME: KRISTINA J. THOMPSON LIC. NO. 42350

NO.	DATE	BY	REVISION DESCRIPTION

1326 ENERGY PARK DRIVE  
ST. PAUL, MINNESOTA 55108  
(651) 644-4389  
**Howard R. Green Company**

**2003 STREET IMPROVEMENTS**  
CITY OF ELK RIVER

PLAN AND PROFILE  
OXFORD AVENUE  
0+00 TO 4+15.59

SHEET NO.  
**21**

DRAWING NUMBER 03IMPR.04 21  
SACD PRODUCTS • NEW HOPE, MINNESOTA  
DESIGNED BY: PAUL THOMPSON 818980J  
PROJECT NO. 03-008  
DATE: 03/08/04  
SHEET NO. 21 OF 21