

PLANT SCHEDULE JOHNSON ST NO

TREES	CODE	BOTANICAL NAME / COMMON NAME	CONT	CAL	QTY
	SB	Amelanchier canadensis 'Autumn Brilliance' / Autumn Brilliance Serviceberry	B & B	2"Cal	7
	IL	Syringa reticulata 'Ivory Silk' / Ivory Silk Japanese Tree Lilac	B & B	2"Cal	11
BOULEVARD TREES	CODE	BOTANICAL NAME / COMMON NAME	CONT	CAL	QTY
	HB	Celtis occidentalis / Common Hackberry	B & B	2.5"Cal	8
DROUGHT TOLERANT	CODE	BOTANICAL NAME / COMMON NAME	CONT	CAL	QTY
	KC	Gymnocladus dioica 'Espresso' / Kentucky Coffeetree	B & B	2.5"Cal	10

NOTE: LANDSCAPE TREES SHOWN ON THIS PLAN WILL BE PLANTED DURING HOME CONSTRUCTION AND WILL NOT BE INSTALLED DURING THE UTILITY & STREET IMPROVEMENTS.

NOTES

GENERAL NOTES:

- THE CONTRACTOR SHALL INSPECT THE SITE AND BECOME FAMILIAR WITH THE EXISTING CONDITIONS RELATING TO THE NATURE AND SCOPE OF THE WORK.
- THE CONTRACTOR SHALL VERIFY PLAN LAYOUT AND BRING TO THE ATTENTION OF THE LANDSCAPE ARCHITECT DISCREPANCIES WHICH MAY COMPROMISE THE DESIGN OR INTENT OF THE LAYOUT.
- THE CONTRACTOR SHALL BE RESPONSIBLE FOR COMPLYING WITH ALL APPLICABLE CODES, REGULATIONS, AND PERMITS GOVERNING THE WORK.
- THE CONTRACTOR SHALL PROTECT EXISTING ROADS, CURBS/GUTTERS, TRAILS, TREES, LAWNS AND SITE ELEMENTS DURING CONSTRUCTION. DAMAGE TO SAME SHALL BE REPAIRED AND/OR REPLACED AT NO ADDITIONAL COST TO THE OWNER.
- LOCATE AND VERIFY ALL UTILITIES, INCLUDING IRRIGATION LINES, WITH THE OWNER FOR PROPRIETARY UTILITIES AND Gopher State ONE CALL 48 HOURS BEFORE DIGGING. CONTRACTOR SHALL BE RESPONSIBLE FOR THE PROTECTION AND REPAIR OF ANY DAMAGES TO SAME. NOTIFY THE LANDSCAPE ARCHITECT OF ANY CONFLICTS TO FACILITATE PLANT RELOCATION.
- THE LANDSCAPE CONTRACTOR SHALL COORDINATE THE PHASES OF CONSTRUCTION AND PLANTING INSTALLATION WITH OTHER CONTRACTORS WORKING ON SITE.**
- THE CONTRACTOR SHALL REVIEW THE SITE FOR DEFICIENCIES IN SITE CONDITIONS WHICH MIGHT NEGATIVELY AFFECT PLANT ESTABLISHMENT, SURVIVAL OR WARRANTY. UNDESIRABLE SITE CONDITIONS SHALL BE BROUGHT TO THE ATTENTION OF THE LANDSCAPE ARCHITECT PRIOR TO BEGINNING OF WORK.
- THE PLAN TAKES PRECEDENCE OVER THE LANDSCAPE LEGEND IF DISCREPANCIES EXIST. QUANTITIES SHOWN IN THE PLANTING SCHEDULE ARE FOR THE CONTRACTOR'S CONVENIENCE. CONTRACTOR TO VERIFY QUANTITIES SHOWN ON THE PLAN.
- THE SPECIFICATIONS TAKE PRECEDENCE OVER THE PLANTING NOTES AND GENERAL NOTES.
- EXISTING TREES AND SHRUBS TO REMAIN SHALL BE PROTECTED TO THE DRIP LINE FROM ALL CONSTRUCTION TRAFFIC, STORAGE OF MATERIALS ETC. WITH 4' HT. ORANGE PLASTIC SAFETY FENCING ADEQUATELY SUPPORTED BY STEEL FENCE POSTS @ 6' C. MAXIMUM SPACING.
- LONG-TERM STORAGE OF MATERIALS OR SUPPLIES ON-SITE WILL NOT BE ALLOWED.
- CONTRACTOR SHALL REQUEST IN WRITING, A FINAL ACCEPTANCE INSPECTION.

PLANTING NOTES:

- NO PLANTS SHALL BE INSTALLED UNTIL FINAL GRADING AND CONSTRUCTION HAS BEEN COMPLETED IN THE IMMEDIATE AREA.
- A GRANULAR PRE-EMERGENT HERBICIDE SHALL BE APPLIED TO ALL PLANT BEDS AT THE MANUFACTURERS RECOMMENDED RATE PRIOR TO PLANT INSTALLATION.
- ALL PLANTING STOCK SHALL CONFORM TO THE "AMERICAN STANDARD FOR NURSERY STOCK," ANSI-Z60, LATEST EDITION, OF THE AMERICAN ASSOCIATION OF NURSERYMEN, INC. AND SHALL CONSTITUTE MINIMUM QUALITY REQUIREMENTS FOR PLANT MATERIALS.
- OVERSTORY TREES SHALL BEGIN BRANCHING NO LOWER THAN 6' ABOVE PAVED SURFACES.
- ALL PLANTS MUST BE HEALTHY, VIGOROUS MATERIAL, FREE OF PESTS AND DISEASE AND BE CONTAINER GROWN OR BALLED AND BURLAPPED AS INDICATED IN THE LANDSCAPE LEGEND.
- PLANT MATERIALS TO BE INSTALLED PER PLANTING DETAILS.
- ALL TREES MUST BE STRAIGHT TRUNKED AND FULL HEADED AND MEET ALL REQUIREMENTS SPECIFIED.
- THE LANDSCAPE ARCHITECT RESERVES THE RIGHT TO REJECT ANY PLANTS WHICH ARE DEEMED UNSATISFACTORY BEFORE, DURING, OR AFTER INSTALLATION.
- NO SUBSTITUTIONS OF PLANT MATERIAL SHALL BE ACCEPTED UNLESS APPROVED IN WRITING BY THE LANDSCAPE ARCHITECT.
- ALL PLANT MATERIAL QUANTITIES, SHAPES OF BEDS AND LOCATIONS SHOWN ARE APPROXIMATE. CONTRACTOR SHALL BE RESPONSIBLE FOR COMPLETE COVERAGE OF ALL PLANTING BEDS AT SPACING SHOWN AND ADJUSTED TO CONFORM TO THE EXACT CONDITIONS OF THE SITE. THE LANDSCAPE ARCHITECT SHALL APPROVE THE STAKING LOCATION OF ALL PLANT MATERIALS PRIOR TO INSTALLATION.
- ALL PLANTING AREAS MUST BE COMPLETELY MULCHED AS SPECIFIED.
- MULCH: SHREDDED HARDWOOD MULCH, CLEAN AND FREE OF NOXIOUS WEEDS OR OTHER DELETERIOUS MATERIAL, IN ALL MASS PLANTING BEDS AND FOR TREES, UNLESS INDICATED AS ROCK MULCH ON DRAWINGS. SUBMIT SAMPLE TO LANDSCAPE ARCHITECT PRIOR TO DELIVERY FOR APPROVAL. DELIVER MULCH ON DAY OF INSTALLATION. USE 4" FOR SHRUB BEDS, AND 3" FOR PERENNIAL/GROUND COVER BEDS, UNLESS OTHERWISE DIRECTED.
- THE CONTRACTOR SHALL BE RESPONSIBLE FOR ALL MULCHES AND PLANTING SOIL QUANTITIES TO COMPLETE THE WORK SHOWN ON THE PLAN.
- USE ANTI-DESICCANT (WILTRUF OR APPROVED EQUAL) ON DECIDUOUS PLANTS MOVED IN LEAF AND FOR EVERGREENS MOVED ANYTIME. APPLY AS PER MANUFACTURER'S INSTRUCTION. ALL EVERGREENS SHALL BE SPACED IN THE LATE FALL FOR WINTER PROTECTION DURING WARRANTY PERIOD.
- PLANTING SOIL FOR TREES, SHRUBS AND GROUND COVERS: FERTILE FRAGILE LOAM CONTAINING A LIBERAL AMOUNT (4% MIN.) OF HUMUS AND CAPABLE OF SUSTAINING VIGOROUS PLANT GROWTH. IT SHALL COMPLY WITH MNDOT SPECIFICATION 3877 TYPE B SELECT TOPSOIL. MIXTURE SHALL BE FREE FROM HARDPACK SUBSOIL, STONES, CHEMICALS, NOXIOUS WEEDS, ETC. SOIL MIXTURE SHALL HAVE A PH BETWEEN 6.1 AND 7.5 AND 10-0-10 FERTILIZER AT THE RATE OF 3 POUNDS PER CUBIC YARD. IN PLANTING BEDS INCORPORATE THIS MIXTURE THROUGHOUT THE ENTIRE BED IN A 6" LAYER AND ROTO-TILLING IT INTO THE TOP 12" OF SOIL AT A 1:1 RATIO. ANY PLANT STOCK NOT PLANTED ON DAY OF DELIVERY SHALL BE HELED IN AND WATERED UNTIL INSTALLATION. PLANTS NOT MAINTAINED IN THIS MANNER WILL BE REJECTED.
- ALL PLANTS SHALL BE GUARANTEED FOR TWO COMPLETE GROWING SEASONS (APRIL 1 - NOVEMBER 1), UNLESS OTHERWISE SPECIFIED. THE GUARANTEE SHALL COVER THE FULL COST OF REPLACEMENT INCLUDING LABOR AND PLANTS.

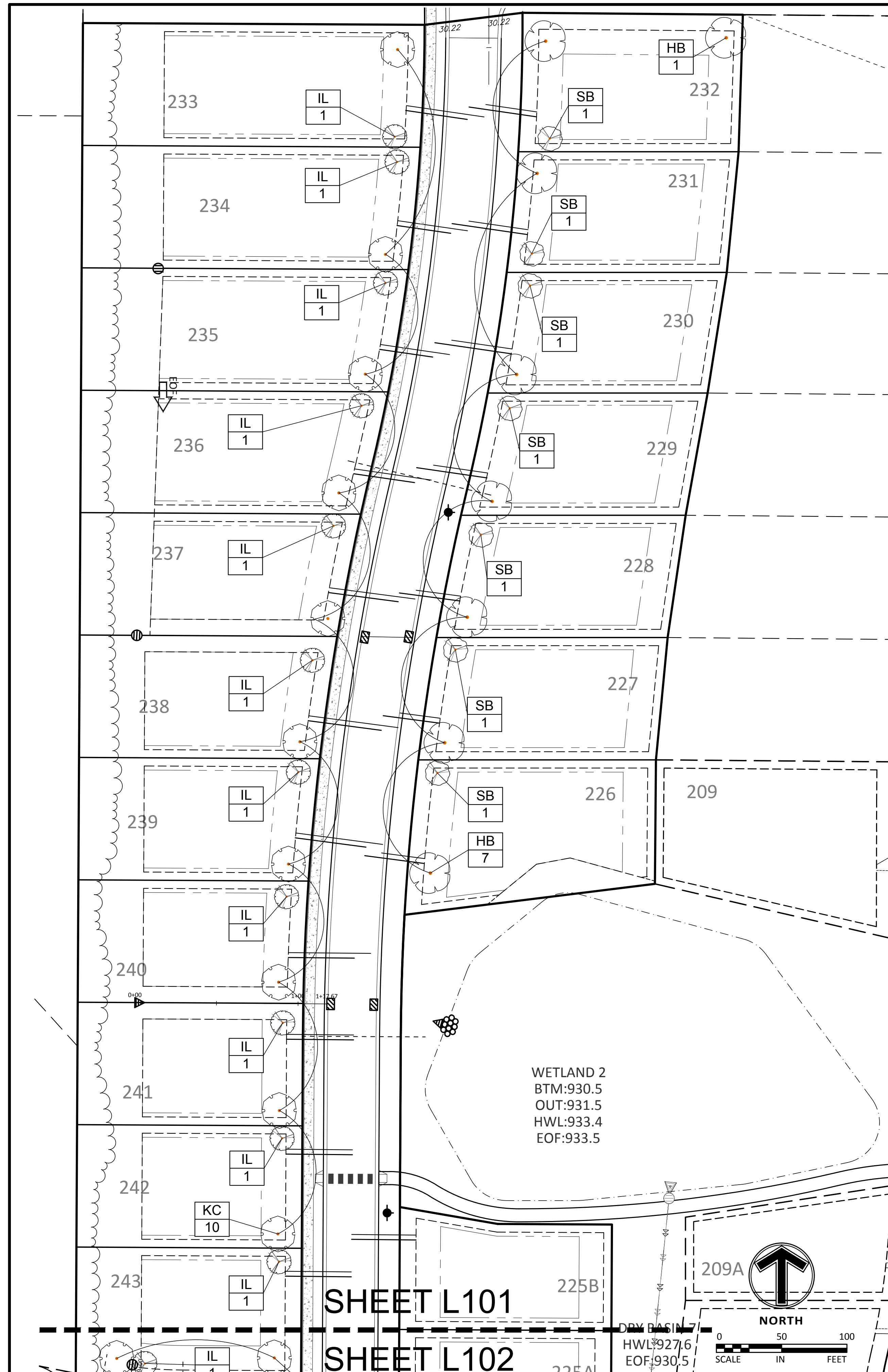
- CONTRACTOR SHALL NOTIFY THE LANDSCAPE ARCHITECT AT LEAST 3 DAYS PRIOR TO PLANNED DELIVERY. THE CONTRACTOR SHALL NOTIFY THE LANDSCAPE ARCHITECT AT LEAST 24 HOURS IN ADVANCE OF BEGINNING PLANT INSTALLATION.
- SEASONS/TIME OF PLANTING AND SEEDING: NOTE: THE CONTRACTOR MAY ELECT TO PLANT IN OFF-SEASONS ENTIRELY AT HIS/HER RISK. DECIDUOUS
 - 17.1. POTTED PLANTS: 4/1 - 6/1; 9/21 - 11/1
 - 17.2. DECIDUOUS /B&B: 4/1 - 6/1; 9/21 - 11/1
 - 17.3. EVERGREEN POTTED PLANTS: 4/1 - 6/1; 9/21 - 11/1
 - 17.4. EVERGREEN B&B: 4/1 - 5/1; 9/21 - 11/1
 - 17.5. TURF/LAWN SEEDING: 4/1 - 6/1; 7/20 - 9/20
 - 17.6. NATIVE MIX SEEDING: 4/1 - 7/20; 9/20-10/20
- MAINTENANCE SHALL BEGIN IMMEDIATELY AFTER EACH PORTION OF THE WORK IS IN PLACE. PLANT MATERIAL SHALL BE PROTECTED AND MAINTAINED UNTIL THE INSTALLATION OF THE PLANTS IS COMPLETE, INSPECTION HAS BEEN MADE, AND PLANTINGS ARE ACCEPTED EXCLUSIVE OF THE GUARANTEE. MAINTENANCE SHALL INCLUDE WATERING, CULTIVATING, MULCHING, REMOVAL OF DEAD MATERIALS, RE-SETTING PLANTS TO PROPER GRADE AND KEEPING PLANTS IN A PLUMB POSITION. AFTER ACCEPTANCE, THE OWNER SHALL ASSUME MAINTENANCE RESPONSIBILITIES. HOWEVER, THE CONTRACTOR SHALL CONTINUE TO BE RESPONSIBLE FOR KEEPING THE TREES PLUMB THROUGHOUT THE GUARANTEE PERIOD.
- ANY PLANT MATERIAL WHICH DIES, TURNS BROWN, OR DEFOLIATES PRIOR TO TOTAL ACCEPTANCE OF THE WORK SHALL BE PROMPTLY REMOVED FROM THE SITE AND REPLACED WITH MATERIAL OF THE SAME SPECIES, QUANTITY, AND SIZE AND MEETING ALL LANDSCAPE REGARD SPECIFICATIONS.
- WATERING: MAINTAIN A WATERING SCHEDULE WHICH WILL THOROUGHLY WATER ALL PLANTS ONCE A WEEK. IN EXTREMELY HOT, DRY WEATHER, WATER MORE OFTEN AS REQUIRED BY INDICATIONS OF HEAT STRESS SUCH AS WILTING LEAVES. CHECK MOISTURE UNDER MULCH PRIOR TO WATERING TO DETERMINE NEED. CONTRACTOR SHALL MAKE THE NECESSARY ARRANGEMENTS FOR WATER.
- ALL BOULEVARD TREES SHALL RECEIVE A TREEGATOR BAG WATERING SYSTEM TO BE FILLED TO MEET THE WATERING NEEDS OF THE TREE.

TURF NOTES:

- TURF ESTABLISHMENT SHALL BE ACCOMPLISHED IN ACCORDANCE WITH THE PROVISIONS OF THE MN/DOT 2105 AND 2575 EXCEPT AS MODIFIED BELOW:
- ALL AREAS TO RECEIVE SOD SHALL ALSO RECEIVE 4" OF TOPSOIL PRIOR TO INSTALLING SOD. TOPSOIL SHALL BE FREE OF TREE ROOTS, STUMPS, BUILDING MATERIAL, AND TRASH, AND SHALL BE FREE OF STONES LARGER THAN 1 1/2" INCHES IN ANY DIMENSION.
 - WHERE SOD ABUTS PAVED SURFACES, FINISHED GRADE OF SOD/SEED SHALL BE HELD 1" BELOW SURFACE ELEVATION OF TRAIL, SLAB, CURB, ETC.
 - SOD SHALL BE LAID PARALLEL TO THE CONTOURS AND SHALL HAVE STAGGERED JOINTS. ON SLOPES STEEPER THAN 3:1 OR IN DRAINAGE SWALES, SOD SHALL BE STAKED SECURELY.
 - TURF ON ALL OTHER AREAS DISTURBED BY CONSTRUCTION SHALL BE RESTORED BY SEEDING, MULCHING AND FERTILIZING. SEED MIXTURE NO.25-121 (FORMERLY MNDOT 240) WILL BE PLACED AT THE RATE OF 70 POUNDS PER ACRE.
 - ALL DISTURBED AREAS TO BE TURF SEED, ARE TO RECEIVE 4" TOP SOIL, SEED, MULCH, AND WATER UNTIL A HEALTHY STAND OF GRASS IS OBTAINED. FOR SLOPES STEEPER THAN 3:1 OR IN DRAINAGE SWALES INSTALL EROSION CONTROL BLANKET.
 - ALL DISTURBED AREAS TO RECEIVE NATIVE SEED, ARE TO RECEIVE PLANTING SOIL, SEED, MULCH, AND WATER UNTIL A HEALTHY STAND OF GRASS IS OBTAINED. FOR SLOPES STEEPER THAN 3:1 OR IN DRAINAGE SWALES INSTALL EROSION CONTROL BLANKET.

IRRIGATION NOTES:

- IRRIGATION SYSTEM TO BE DESIGN/BUILD. CONTRACTOR TO SUBMIT SHOP DRAWINGS FOR APPROVAL OF SYSTEM LAYOUT PRIOR TO INSTALLATION.
- VERIFY WITH CITY THE SIZE OF THE SOURCE PIPE AND DETERMINE GPH AND PSI FOR SYSTEM DESIGN NEEDS.
- ALL SOD TO RECEIVE SPRAY OR ROTOR IRRIGATION HEADS WITH MINIMUM DESIGN OF 1" IRRIGATION PER WEEK.
- ALL PLANT BEDS TO RECEIVE DRIP LINE IRRIGATION, WITH A MINIMUM DESIGN OF .25" IRRIGATION PER WEEK.
- SCREENING TREES TO BE IRRIGATED BY DRIP EMITTERS. SEE PLAN ENLARGEMENTS FOR WATER SUPPLY LOCATION. VERIFY WITH CITY REGARDING WATER METERING. USE NODE CONTROLLER FOR EACH VALVE.
- CONTRACTOR TO INSTALL A TOTAL OF 4 QUICK COUPLERS AT THE CORNERS OF THE SCREENING AREA, TWO NORTH OF 190TH AND TWO SOUTH OF 190TH.



Certification

I hereby certify that this survey, plan or report was prepared by me or under my direct supervision and that I am a duly licensed LANDSCAPE ARCHITECT under the laws of the State of Minnesota.

Ash McKinney
Joshua J. McKinney
Registration No. 53234 Date: 03/27/2017

This certification is not valid unless wet signed in blue ink. If applicable, contact us for a wet signed copy of this survey which is available upon request at Sambatek, Minnetonka, MN office.

Summary

Designed: JJM Drawn: JJM
Approved: ETL Initial Issue: 03/15/18
Phase: CONSTRUCTION DOCUMENTS

Revision History

No.	Date	By	Submittal / Revision
A	04/18/18	ETL	REVISE EAST TRAIL GRADES

Sheet Title
WEST LANDSCAPE PLAN-NORTH

Sheet No. Revision
L1.01 A