

Client
PAXMAR, LLC.

3495 NORTHDAL BLVD. NW
SUITE 210
COON RAPIDS, MN 55448

Project
MISKE
MEADOWS
FOURTH
ADDITION

Location
ELK RIVER, MN

Certification

I hereby certify that this plan, specification or report was prepared by me or under my direct supervision and that I am a duly licensed professional ENGINEER under the laws of the state of Minnesota.

Eric T. Luth
Eric T. Luth
Registration No. 50475 Date: 03/28/2018

If applicable, contact us for a wet signed copy of this plan which is available upon request at Sambatek's, Minnetonka, MN office.

Summary

Designed: NRH Drawn: NRH
Approved: ETL Initial Issue: 03/15/18
Phase: CONSTRUCTION DOCUMENTS

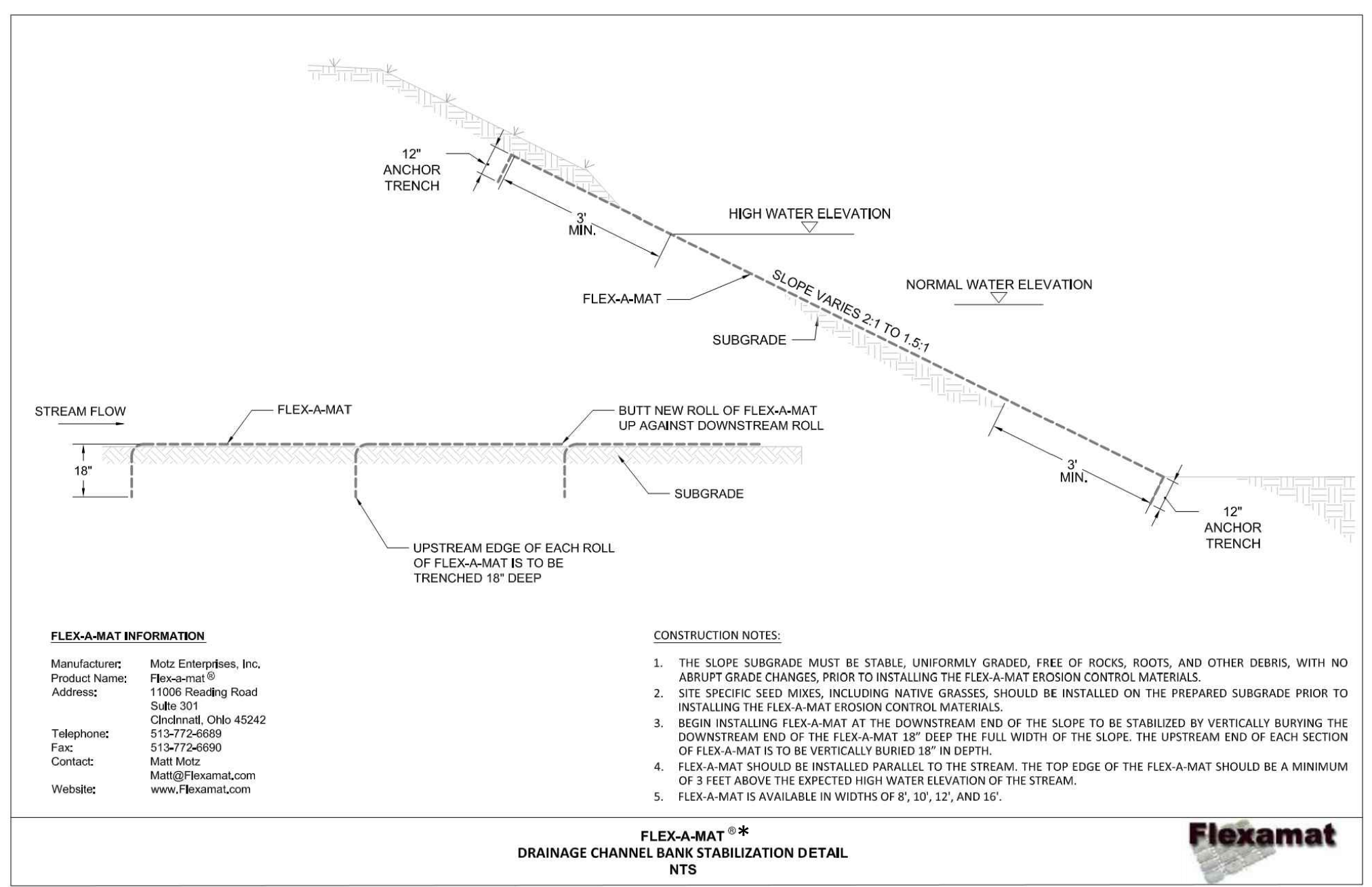
Revision History

No.	Date	By	Submittal / Revision
03/28/18	MMQ		CONSTRUCTION DOCS
A	04/18/18	ETL	REVISE EAST TRAIL GRADES

Sheet Title
CONSTRUCTION
DETAILS

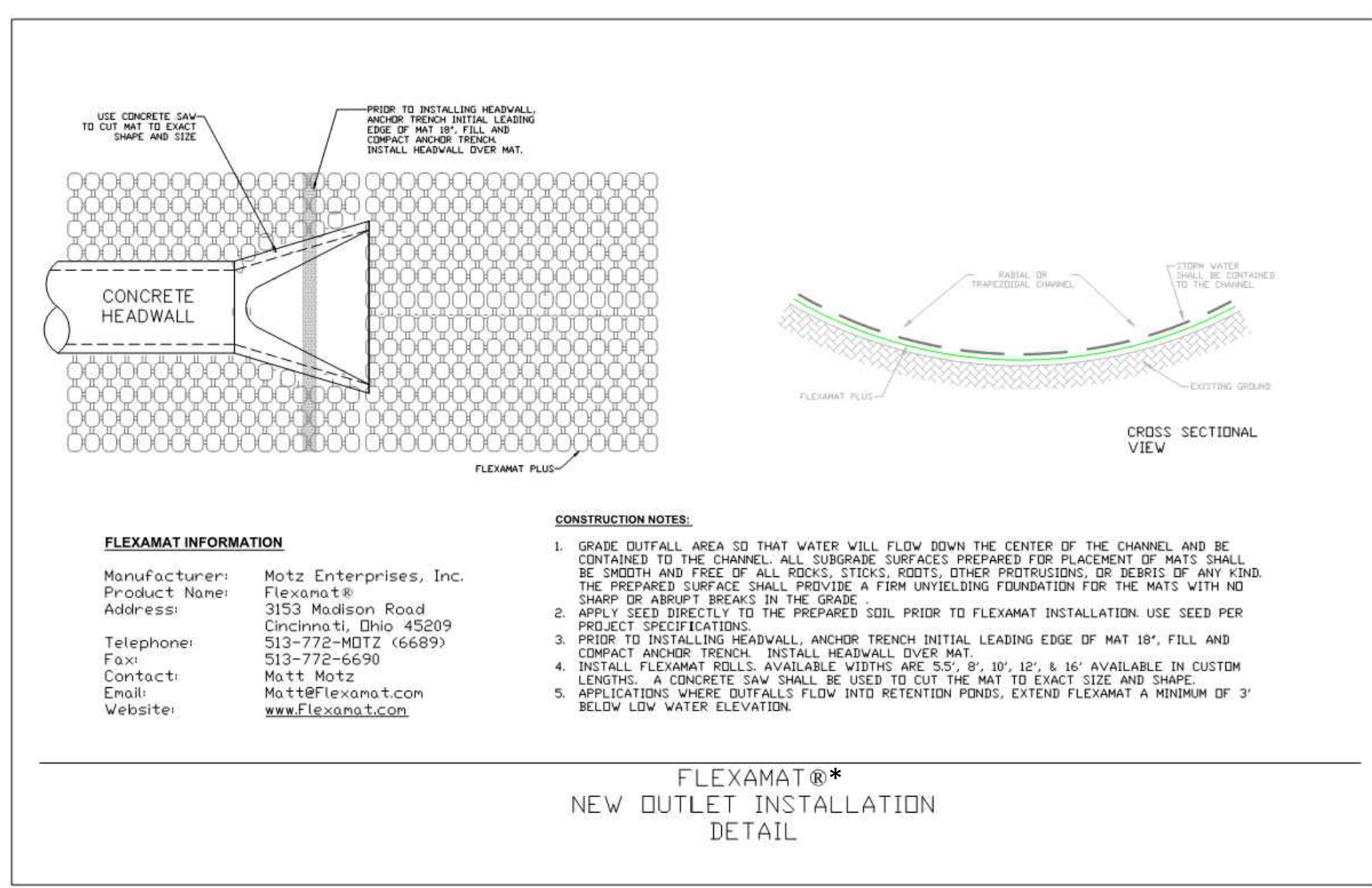
Sheet No. Revision
C9.03 A

Project No. 20460.05



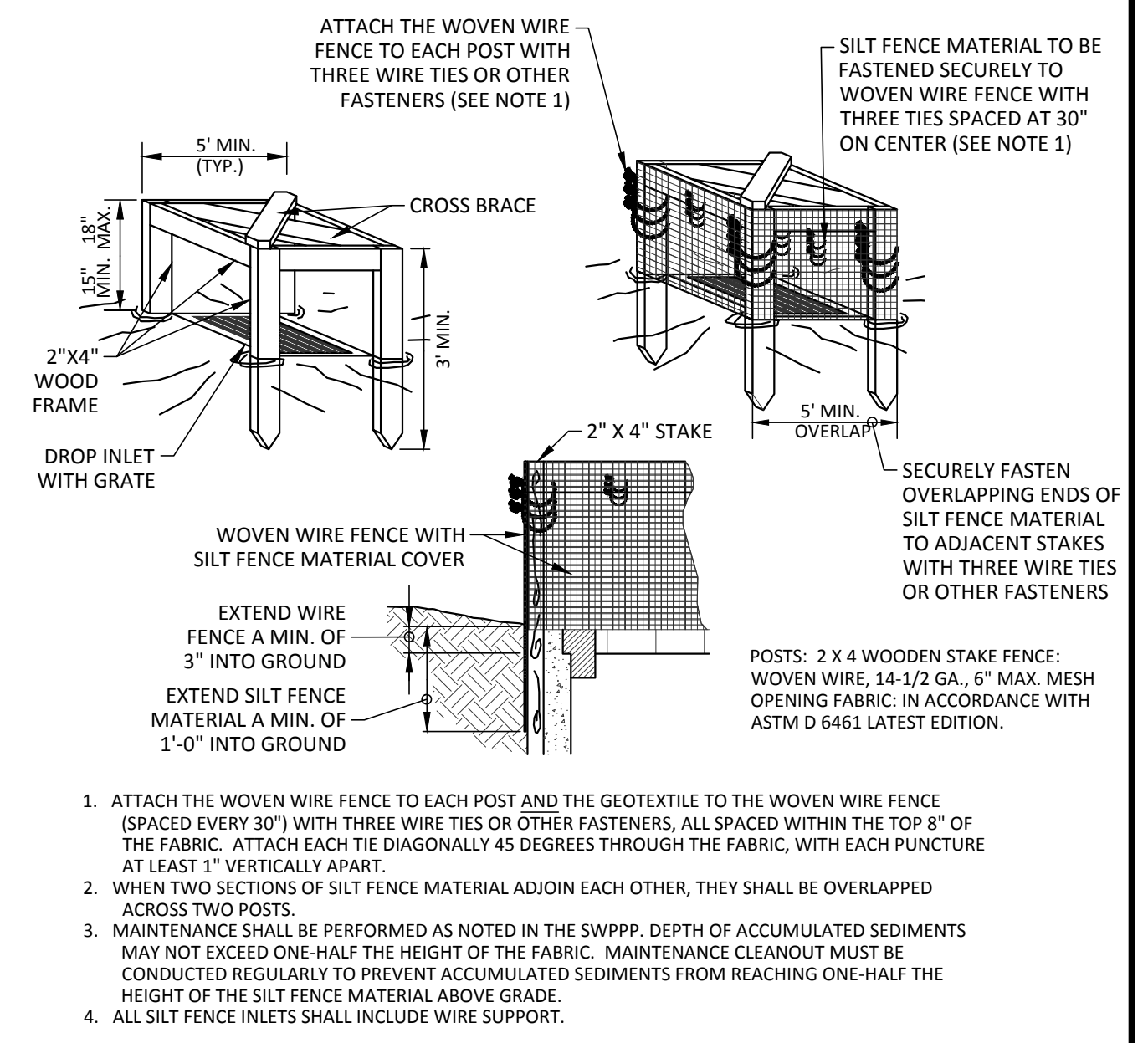
FLEX-A-MAT**
DRAINAGE CHANNEL BANK STABILIZATION DETAIL
NTS

*OR APPROVED EQUAL

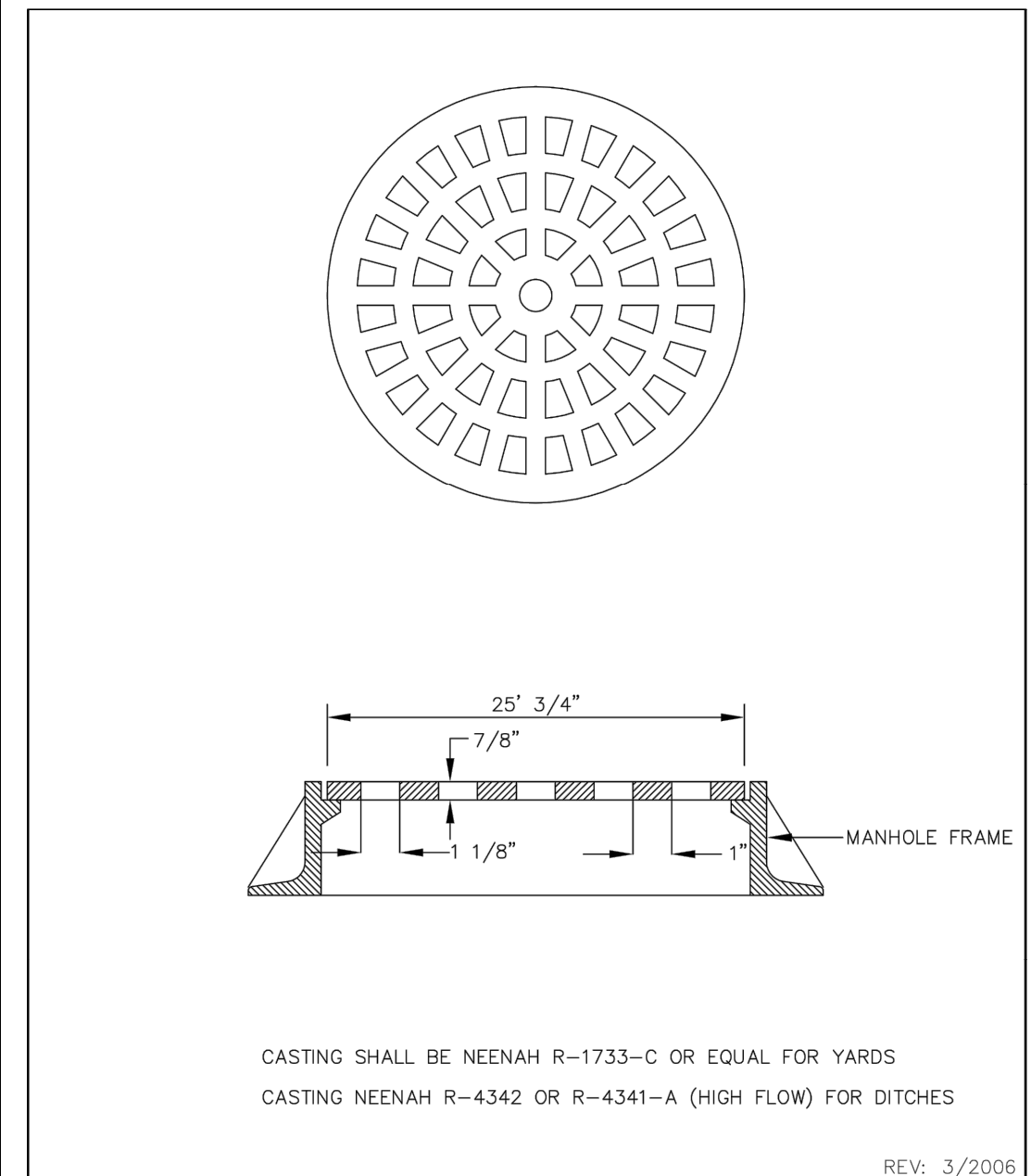


FLEXAMAT**
NEW OUTLET INSTALLATION
DETAIL

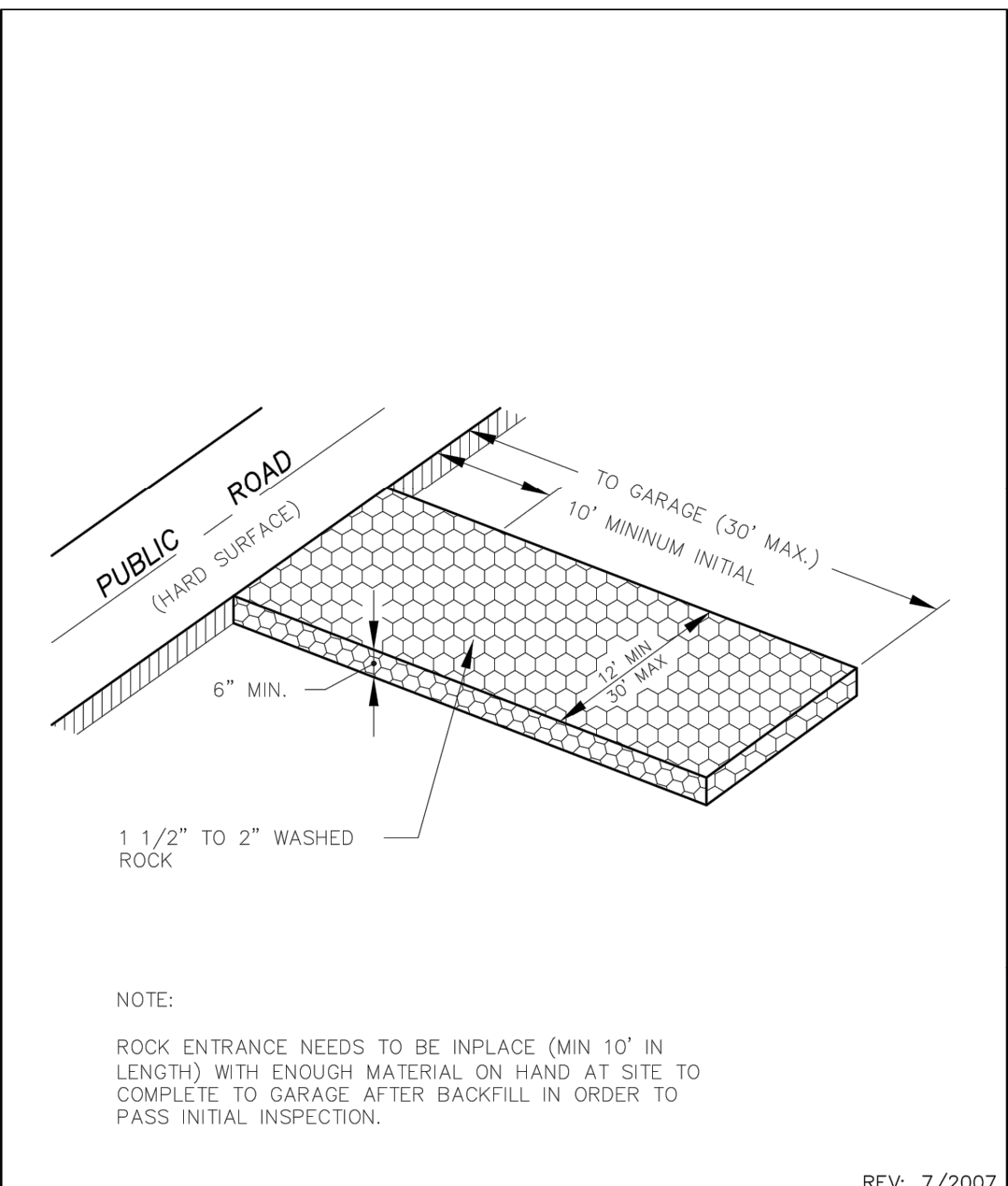
*OR APPROVED EQUAL



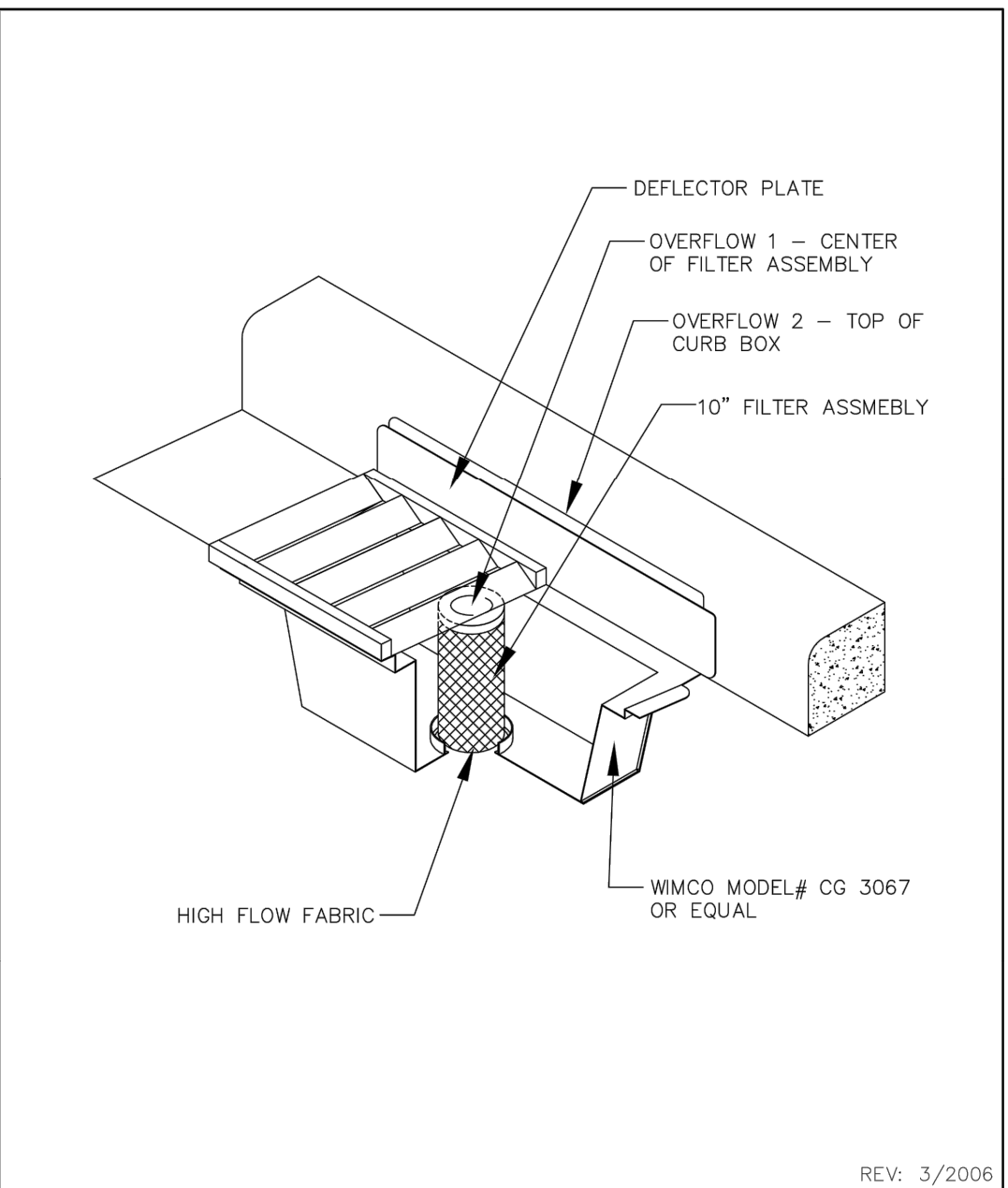
1 **INLET PROTECTION DEVICE (IP1)**
N.T.S.



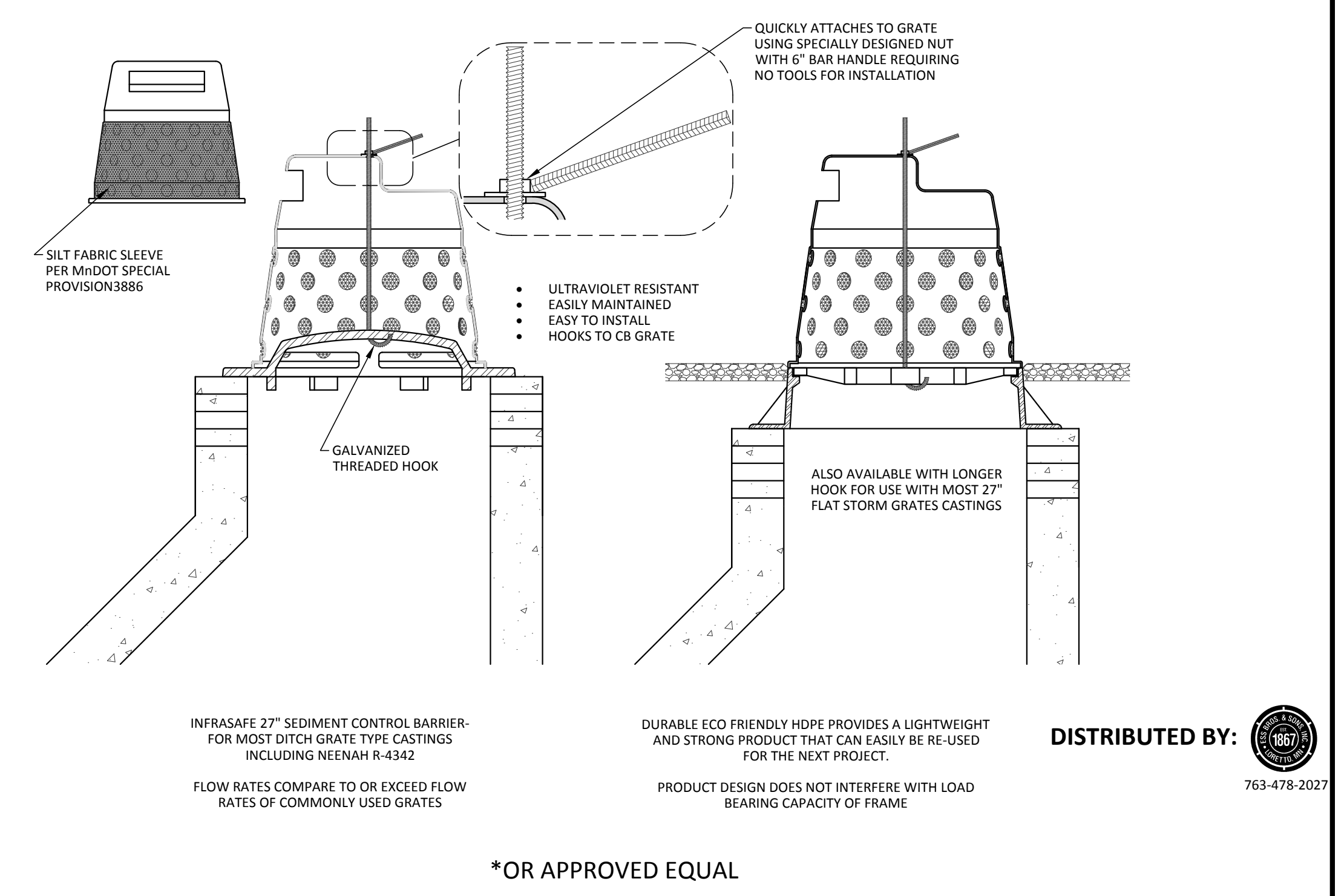
GRATE CASTING
STANDARD PLATE NO. **2509**



ROCK CONSTRUCTION ENTRANCE
BUILDING PERMIT
STANDARD PLATE NO. **2015**



(IP2)
STANDARD PLATE NO. **2511**



3 **27\"/>**

