

**Client**  
**PAXMAR, LLC.**

3495 NORTHDAL BLVD. NW  
SUITE 210  
COON RAPIDS, MN 55448

**Project**  
**MISKE MEADOWS FOURTH ADDITION**

**Location**  
**ELK RIVER, MN**

**Certification**

I hereby certify that this plan, specification or report was prepared by me or under my direct supervision and that I am a duly licensed professional ENGINEER under the laws of the state of Minnesota.

*Eric T. Luth*  
Eric T. Luth  
Registration No. 50475 Date: 03/28/2018

If applicable, contact us for a wet signed copy of this plan which is available upon request at Sambatek's, Minnetonka, MN office.

**Summary**

Designed: NRH Drawn: NRH  
Approved: ETL Initial Issue: 03/15/18  
Phase: CONSTRUCTION DOCUMENTS

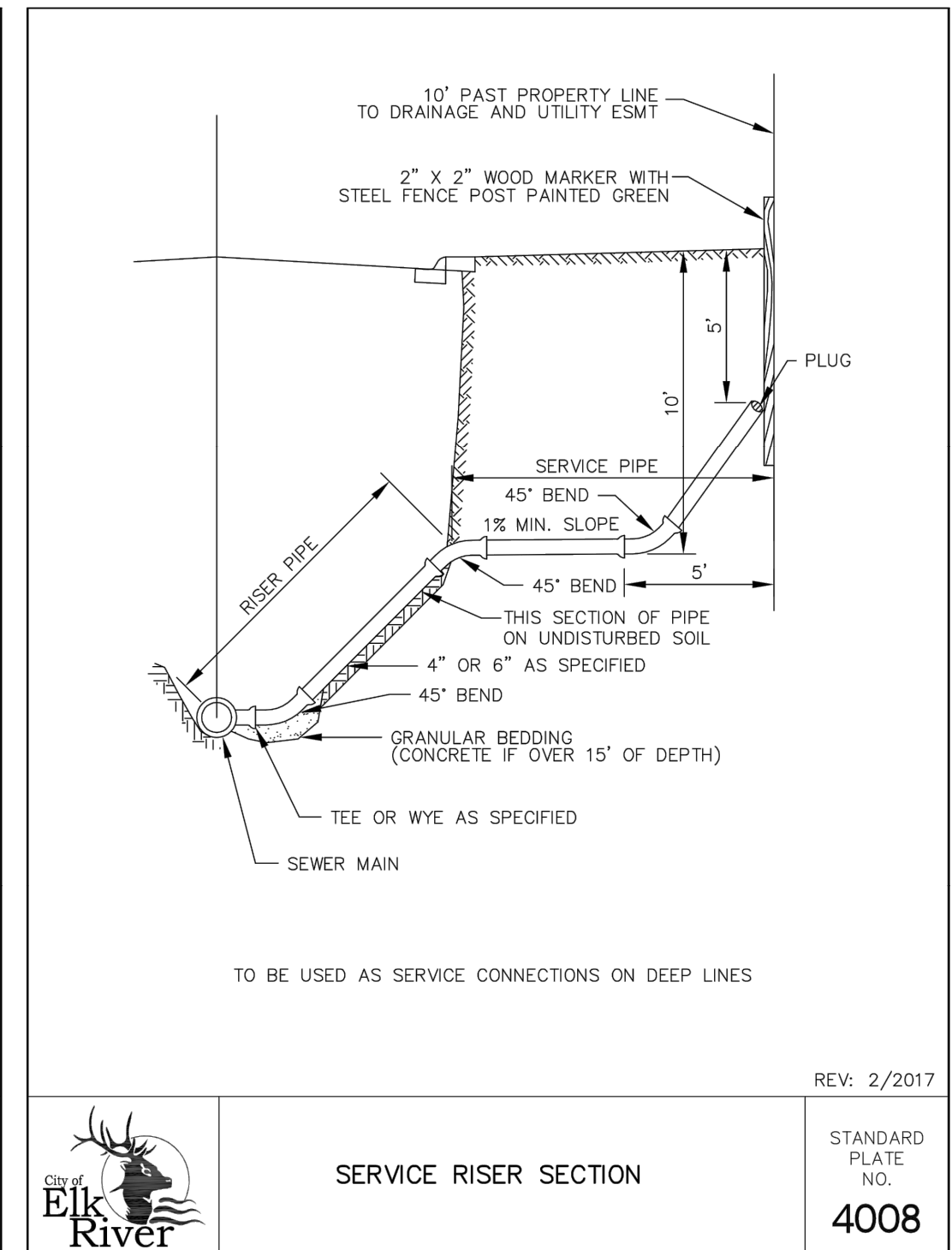
**Revision History**

| No.      | Date     | By                | Submittal / Revision     |
|----------|----------|-------------------|--------------------------|
| 03/28/18 | MMQ      | CONSTRUCTION DOCS |                          |
| A        | 04/18/18 | ETL               | REVISE EAST TRAIL GRADES |

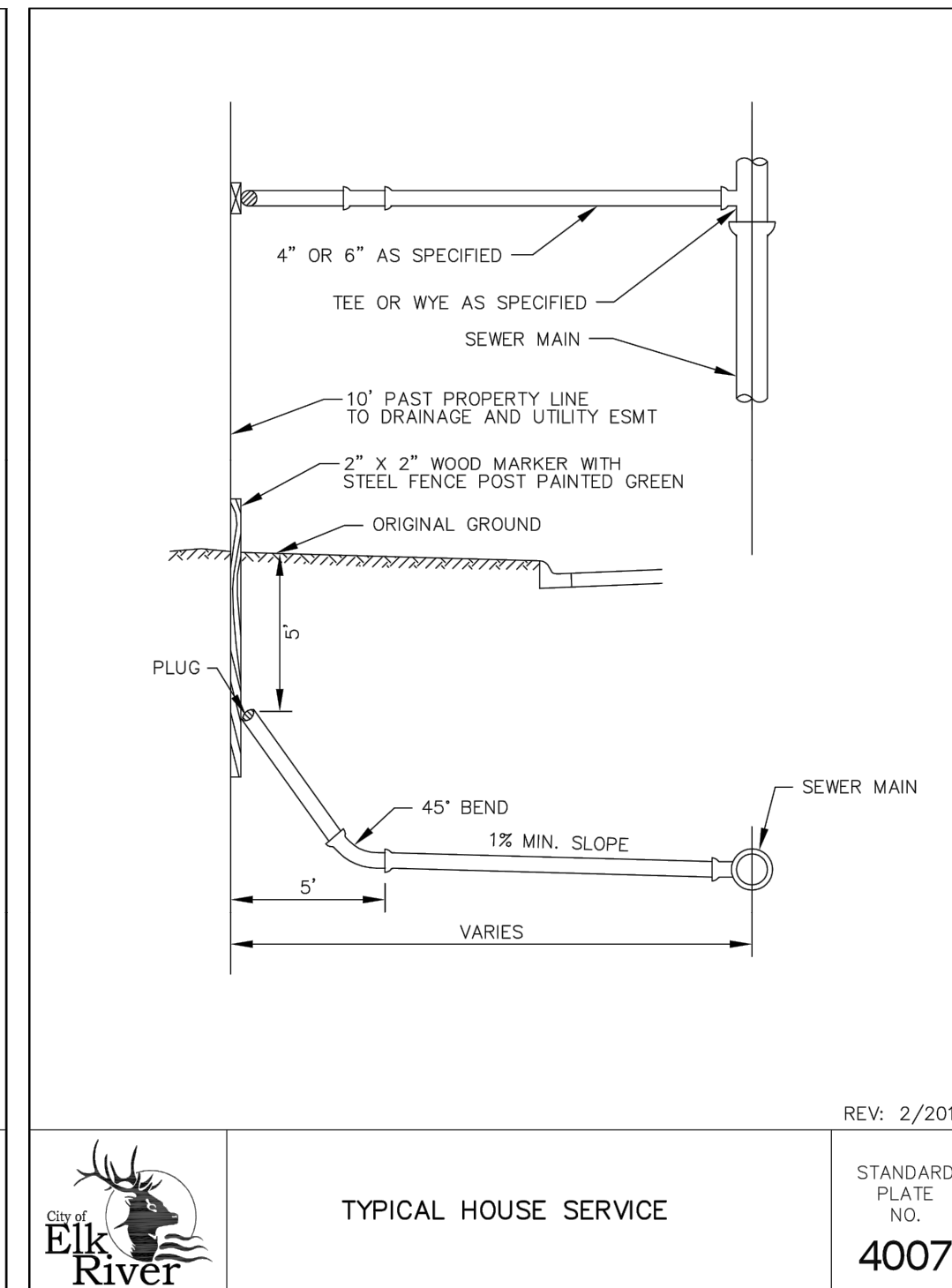
**Sheet Title**  
**CONSTRUCTION DETAILS**

**Sheet No. Revision**  
**C9.01 A**

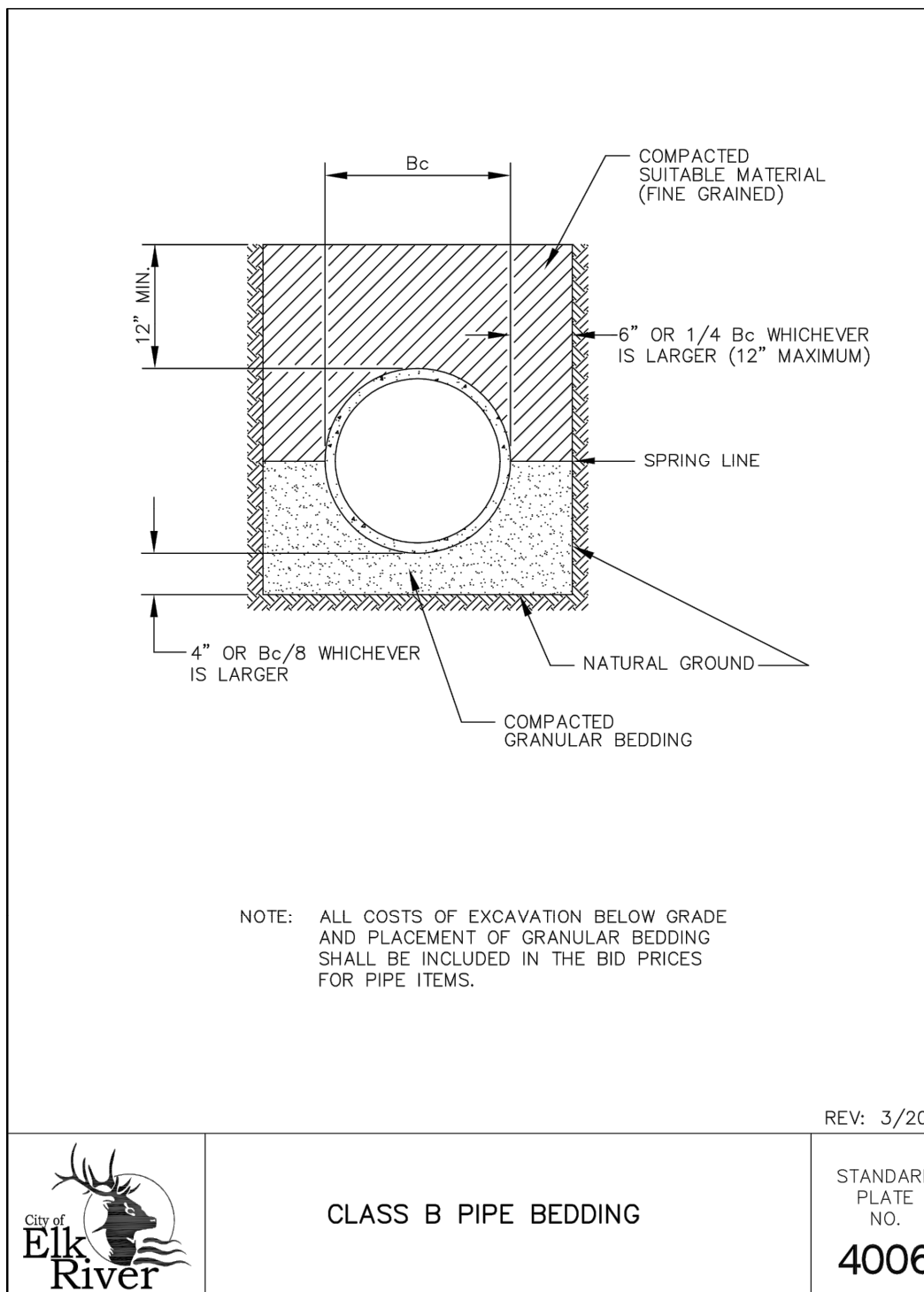
**Project No.** 20460.05



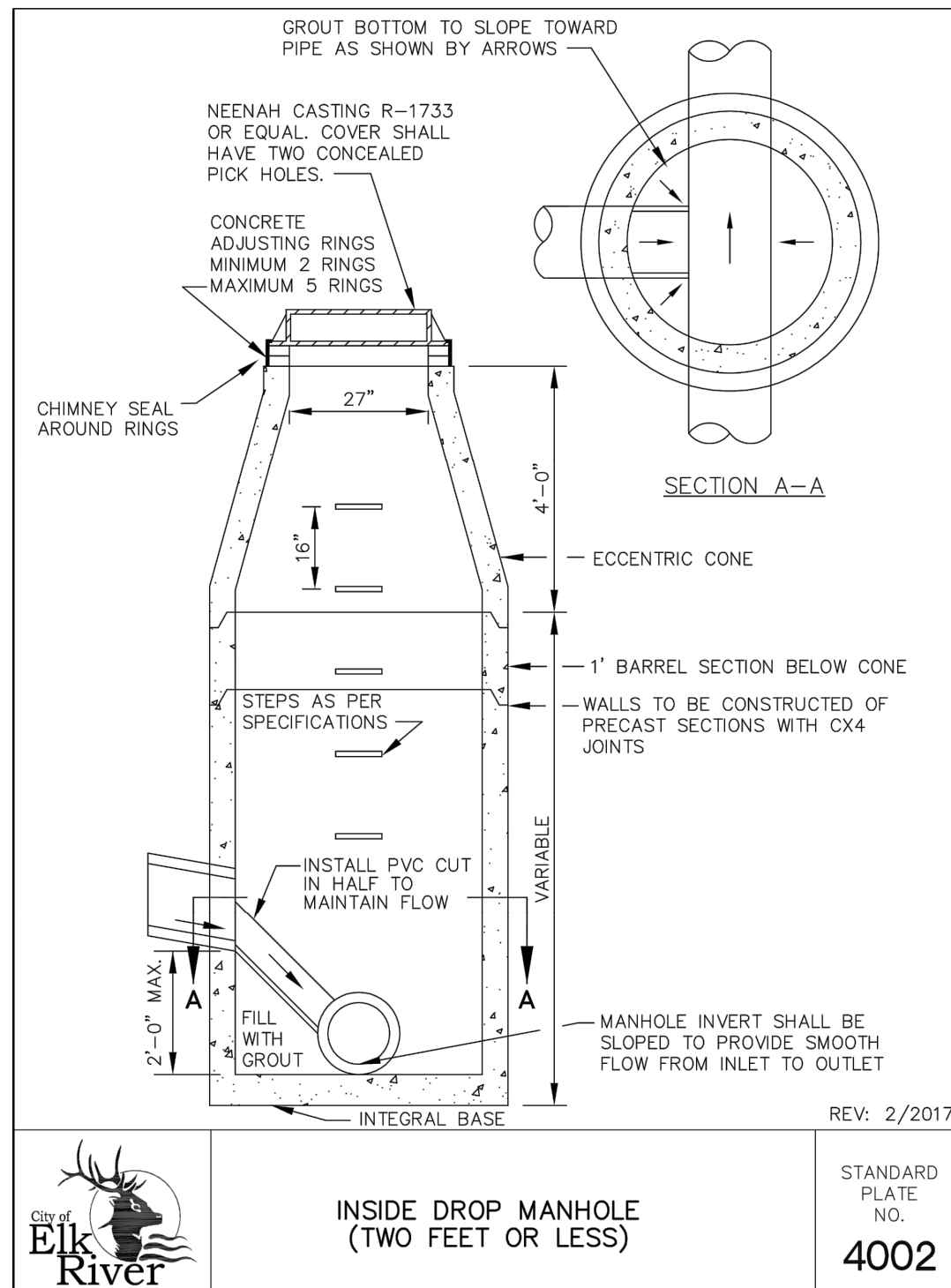
STANDARD PLATE NO. 4008



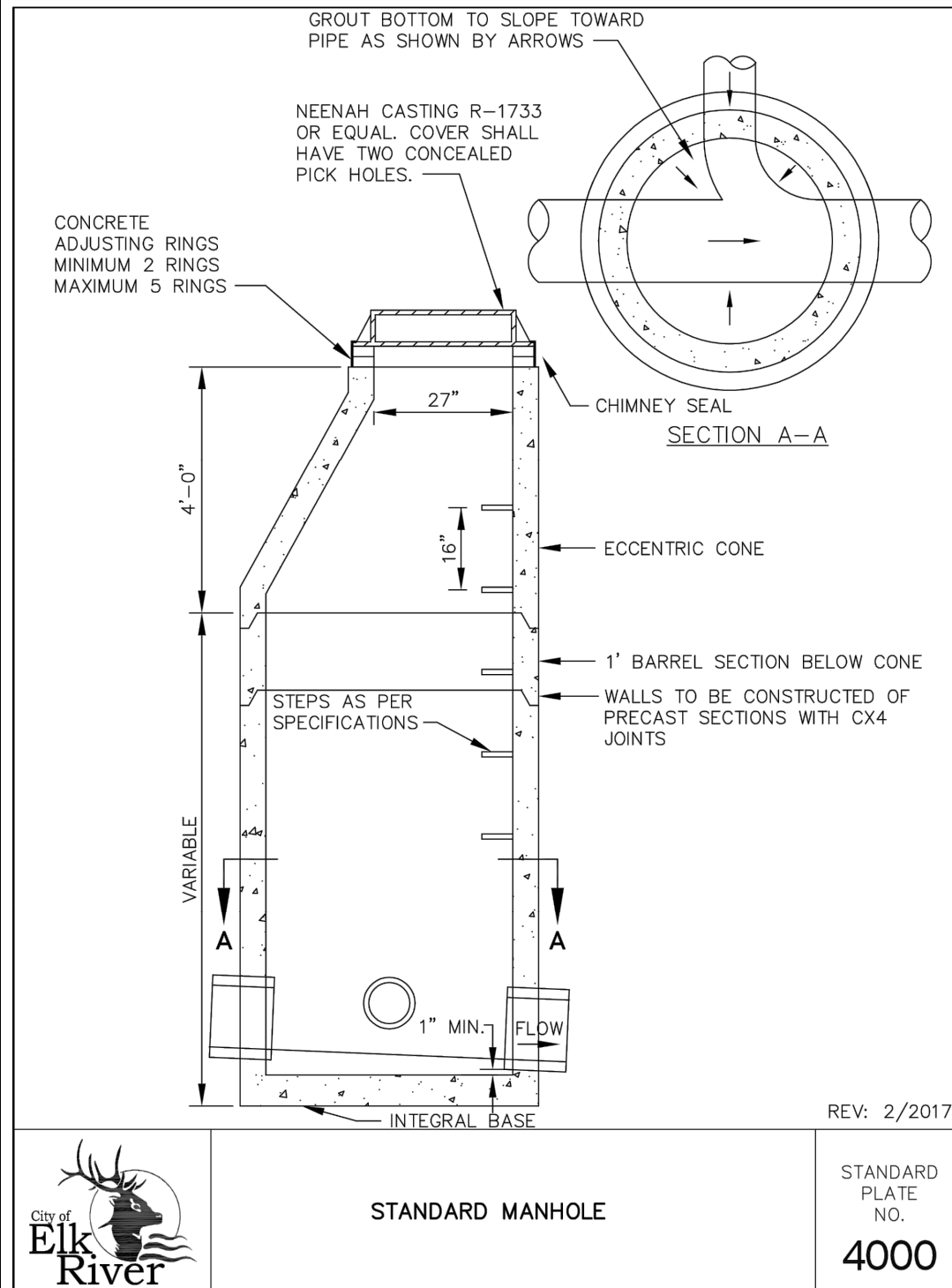
STANDARD PLATE NO. 4007



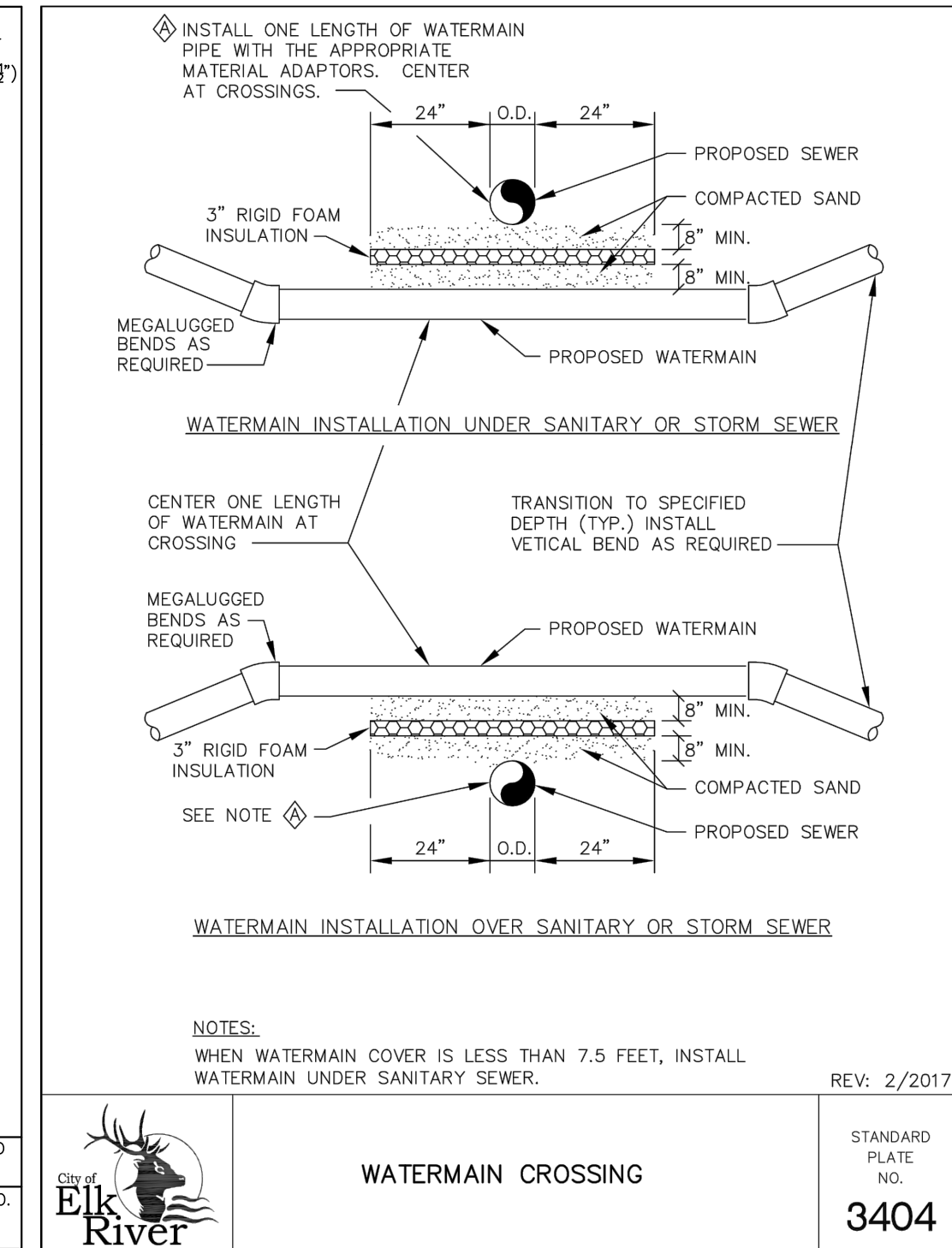
STANDARD PLATE NO. 4006



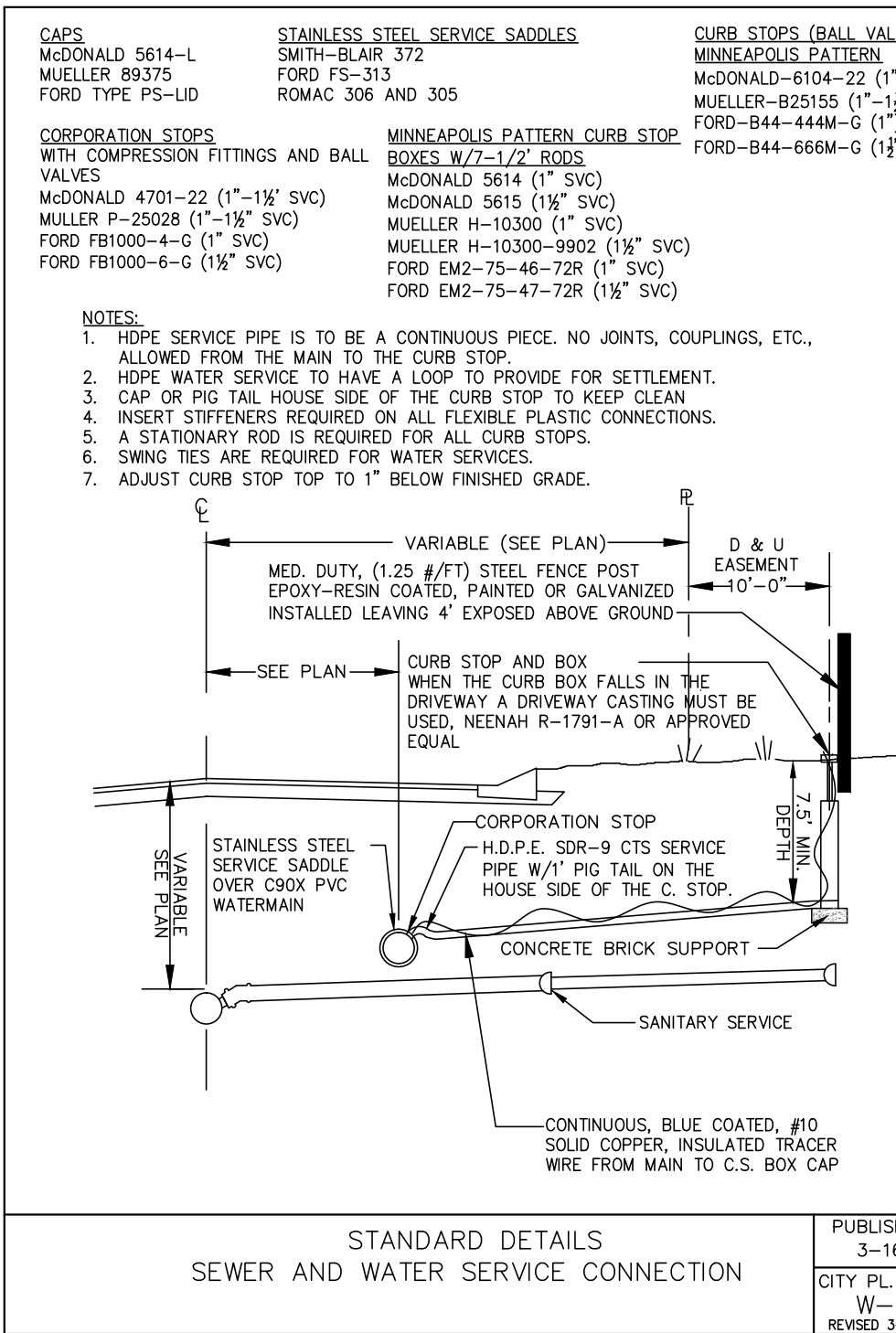
STANDARD PLATE NO. 4002



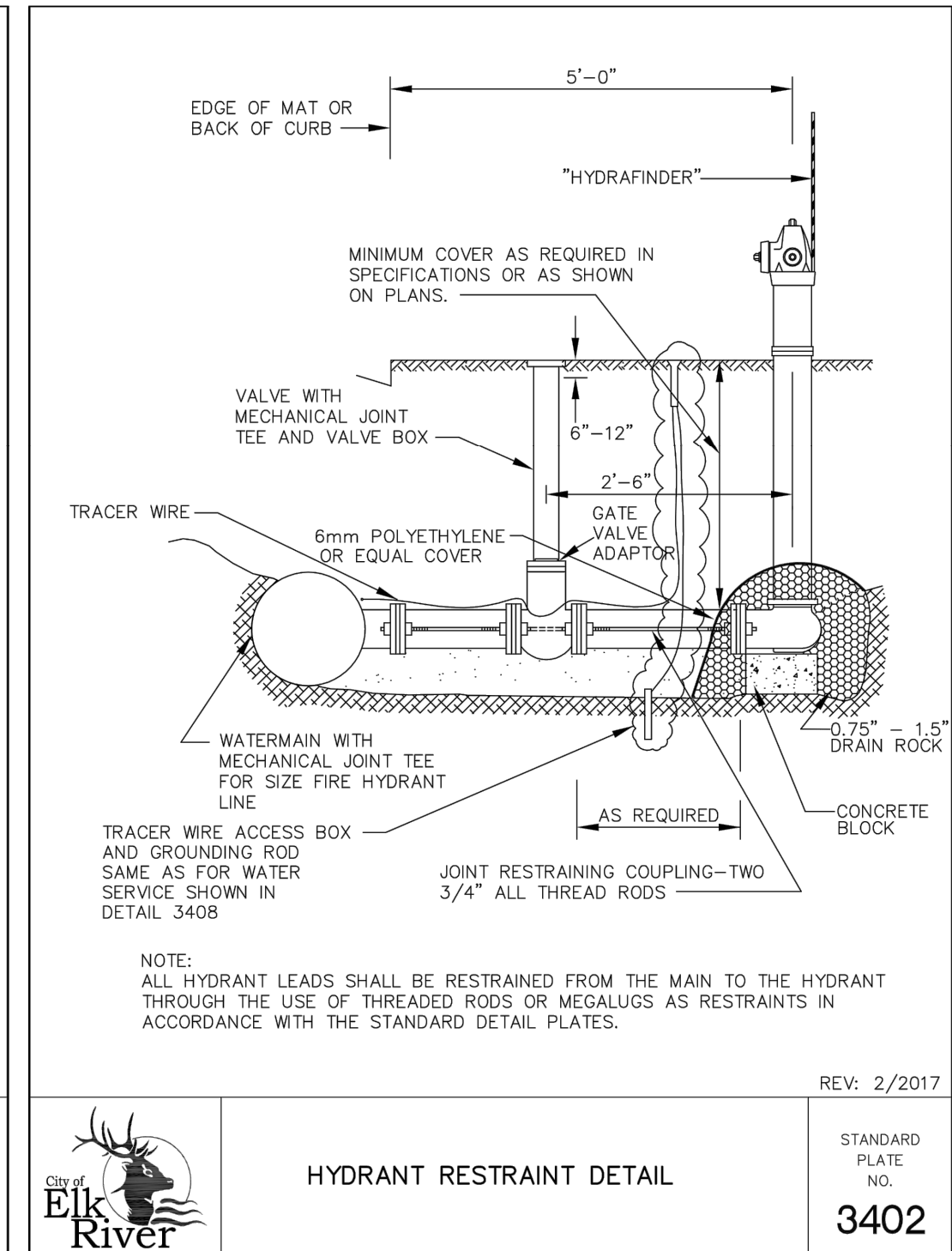
STANDARD PLATE NO. 4000



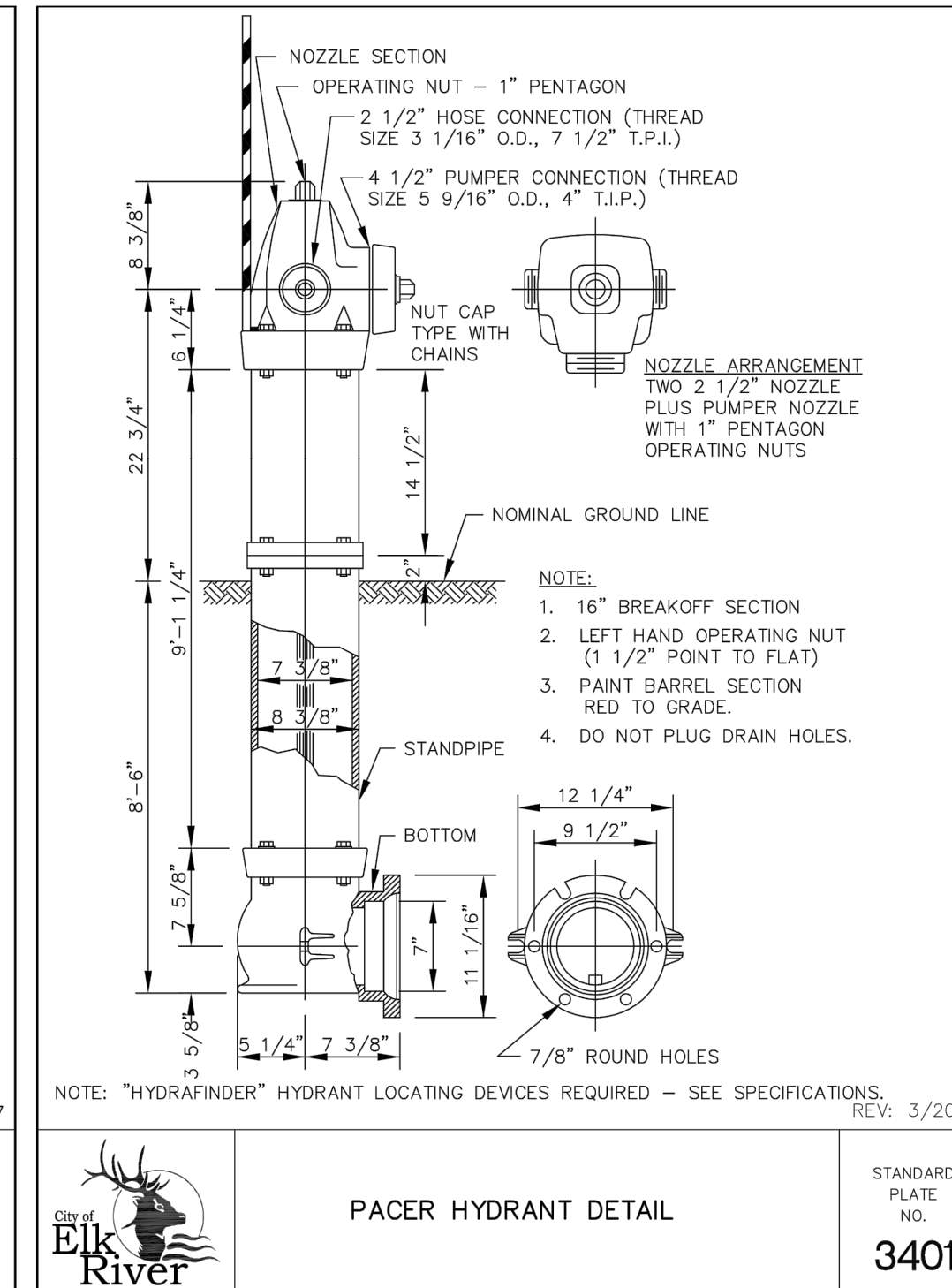
STANDARD PLATE NO. 3404



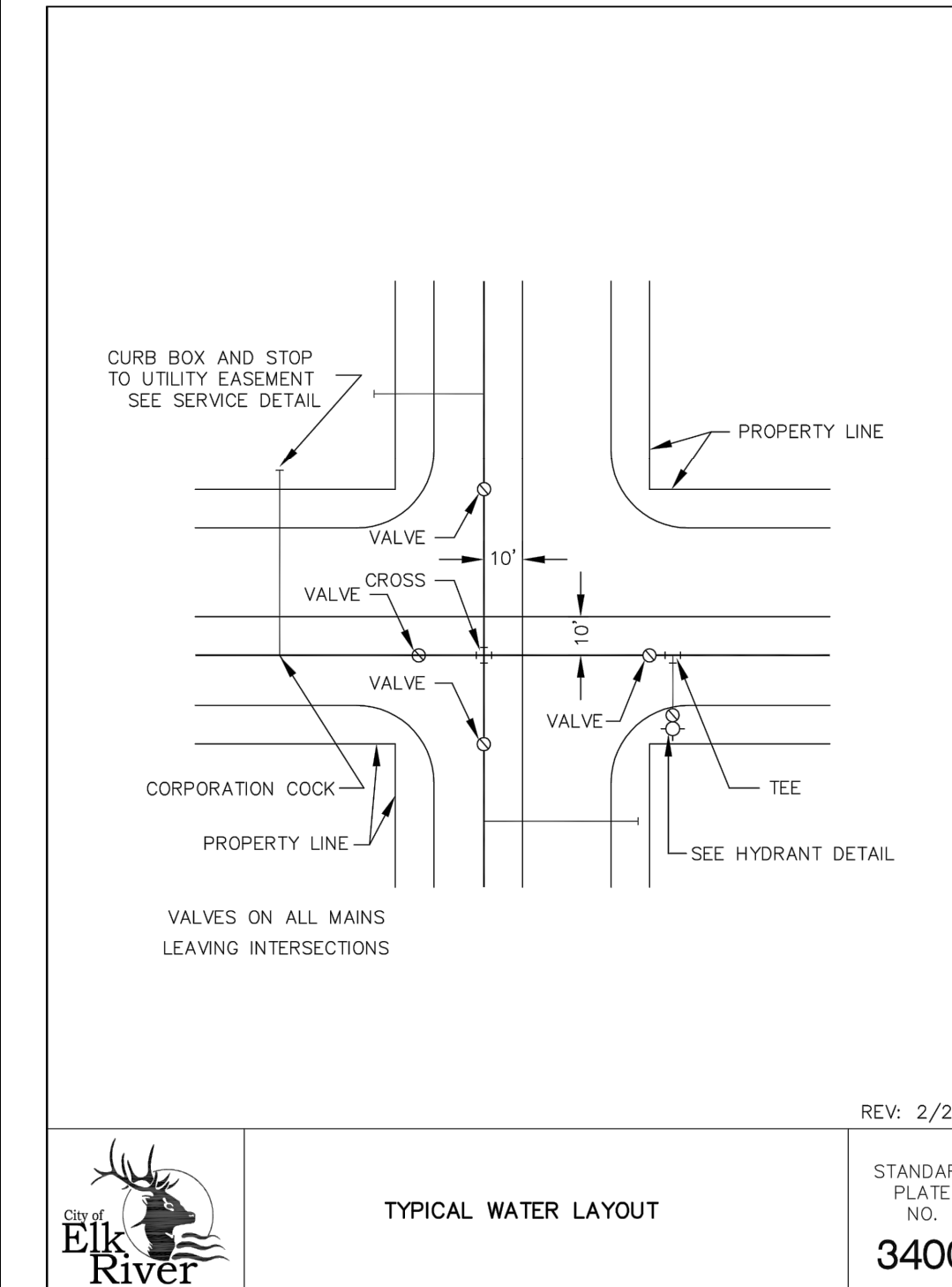
STANDARD PLATE NO. 3402



STANDARD PLATE NO. 3402



STANDARD PLATE NO. 3401



STANDARD PLATE NO. 3400