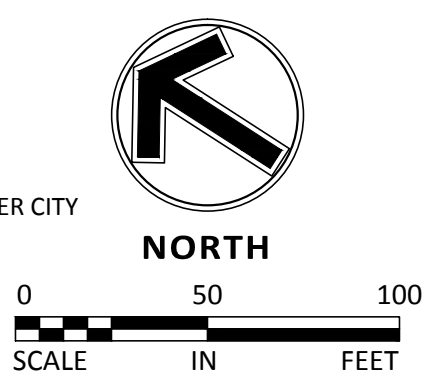


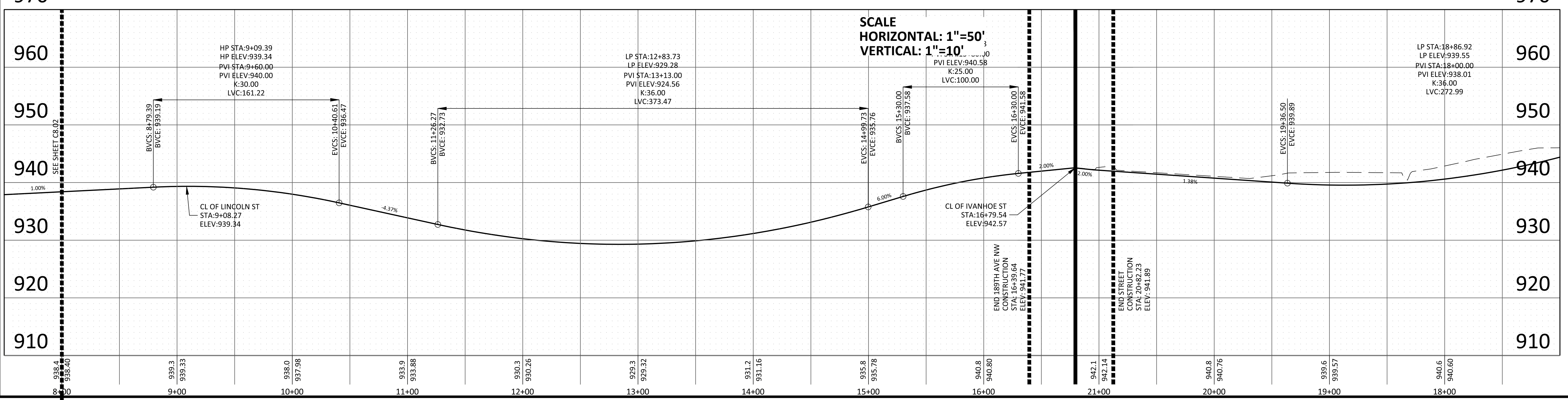
LEGEND	PROPOSED	EXISTING	FUTURE
CURB & GUTTER			
STORM SEWER			
SANITARY SEWER			
WATERMAIN			
EASEMENT			
STREET LIGHT			
CONCRETE SIDEWALK			
HEAVY DUTY PAVEMENT			
BITUMINOUS TRAIL			

- KEY NOTES**
- BEGIN SURMOUNTABLE CURB AND GUTTER
 - END SURMOUNTABLE CURB AND GUTTER
 - PEDESTRIAN CURB RAMP
 - CROSSWALK STRIPING
 - PEDESTRIAN CROSSING SIGN
 - B618 CURB (PER DETAIL 200 SHEET C9.04)
 - SEE DETAIL 2005 SHEET C9.04
 - MOUNT STREET SIGN BLADES ATOP STOP SIGN PER CITY REQUIREMENTS
 - 4 - 4" BURIED CONDUIT, 60 LF TRENCH
 - EXISTING 4 - 4" BURIED CONDUIT, 60 LF
 - INSTALL 8' WIDE BITUMINOUS TRAIL
 - BEGIN NON-URBAN RESIDENTIAL STREET SECTION

- STREET CONSTRUCTION NOTES**
- STATIONING REFERS TO STREET CENTERLINE.
 - ALL SPOT ELEVATIONS ARE TO GUTTER UNLESS OTHERWISE NOTED.
 - ALL DIMENSIONS ARE TO BACK OF CURB UNLESS OTHERWISE NOTED.
 - SEE GRADING PLAN FOR PROPOSED SPOT ELEVATIONS IN PRIVATE DRIVEWAYS.
 - TACK FACE OF EXISTING CURB PRIOR TO PAVING.
 - RELOCATE SIGNS AND UTILITIES AS REQUIRED.
 - ALL EXCESS MATERIAL FROM THE CONSTRUCTION SHALL BE REMOVED FROM THE SITE BY THE CONTRACTOR.
 - STANDING WATER SHALL NOT BE ALLOWED WITHIN THE STREET SUBGRADE. CONTRACTOR SHALL PROVIDE TEMPORARY DRAINAGE OR PUMP OUT WATER FOUND IN THE SUBGRADE WITHIN 24 HOURS OF A RAIN EVENT.
 - ALL CASTINGS (MANHOLES AND VALVE BOXES) MUST BE ADJUSTED TO 1/2" BELOW THE FINISHED ASPHALT BASE COURSE ELEVATION BEFORE PAVING OF THE ASPHALT BASE. NO CUTS WILL BE ALLOWED IN THE NEW PAVEMENT TO ADJUST THE CASTINGS TO GRADE. ADJUSTMENTS TO MEET THE FINAL WEAR COURSE ELEVATION WILL BE ACCOMPLISHED USING GLUE IN STEEL ADJUSTMENT RINGS. THE CITY WILL IMPOSE A \$1,000 FINE TO THE DEVELOPER FOR EVERY PATCH LOCATION NEEDED IN THE BASE COURSE PAVEMENT.
 - ALL MAILBOXES SHALL BE CLUSTERED.



JOHNSON STREET/189TH AVE NW



Engineering | Surveying | Planning | Environmental
Client
PAXMAR, LLC.

3495 NORTHDAL BLVD. NW
SUITE 210
COON RAPIDS, MN 55448

Project
MISKE MEADOWS FOURTH ADDITION

Location
ELK RIVER, MN

Certification
I hereby certify that this plan, specification or report was prepared by me or under my direct supervision and that I am a duly licensed professional ENGINEER under the laws of the state of Minnesota.
Eric T. Luth
Eric T. Luth
Registration No. 50475 Date: 03/28/2018

Summary
Designed: NRH Drawn: NRH
Approved: ETL Initial Issue: 03/15/18
Phase: CONSTRUCTION DOCUMENTS

Revision History
No. Date By Submittal / Revision
A 04/18/18 ETL REVISE EAST TRAIL GRADES

Sheet Title
FINAL STREET PLAN - JOHNSON ST (CONT.)
Sheet No. Revision
C8.03 A

Project No. 20460.05