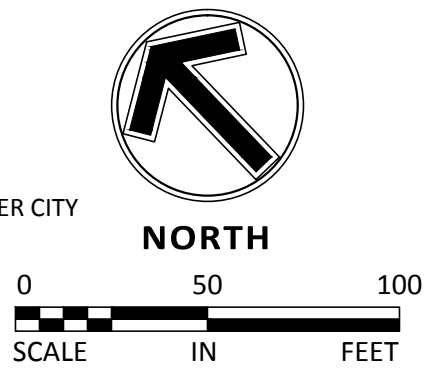


LEGEND

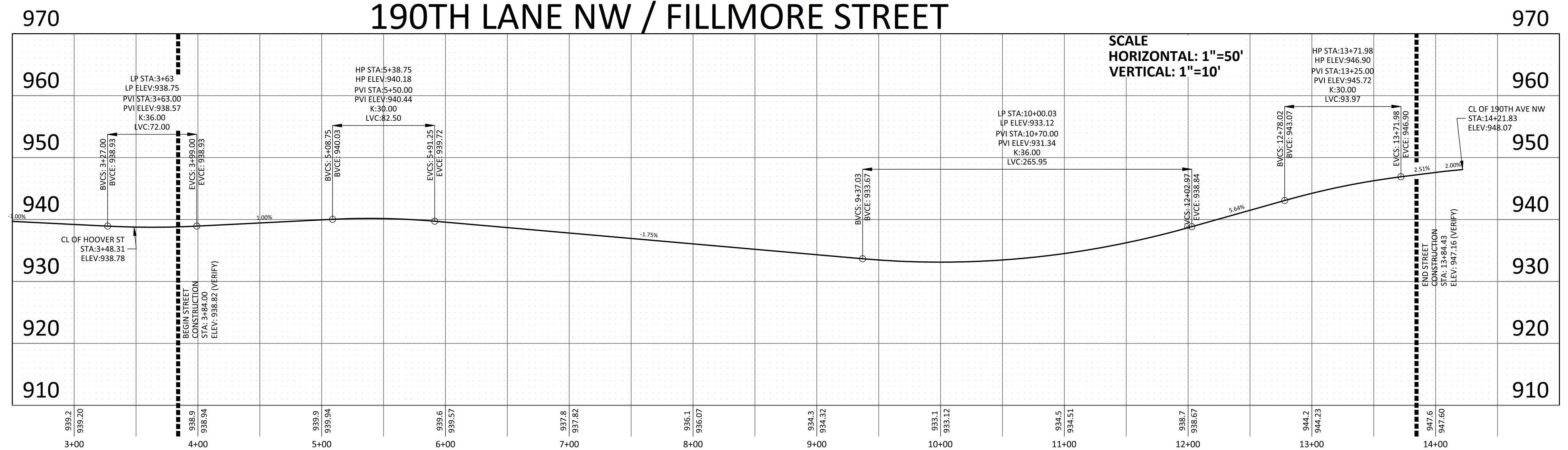
	PROPOSED	EXISTING	FUTURE
CURB & GUTTER			
STORM SEWER			
SANITARY SEWER			
WATERMAIN			
EASEMENT			
STREET LIGHT (TO BE INSTALLED BY CITY)			
CONCRETE SIDEWALK			
BITUMINOUS TRAIL			

- KEY NOTES**
- BEGIN SURMOUNTABLE CURB AND GUTTER
 - END SURMOUNTABLE CURB AND GUTTER
 - PEDESTRIAN CURB RAMP
 - CROSSWALK STRIPING
 - PEDESTRIAN CROSSING SIGN
 - B618 CURB (PER DETAIL 200 SHEET C9.04)
 - SEE DETAIL 2005 SHEET C9.04
 - MOUNT STREET SIGN BLADES ATOP STOP SIGN PER CITY REQUIREMENTS
 - 4 - 4" BURIED CONDUIT, 60 LF TRENCH
 - EXISTING 4 - 4" BURIED CONDUIT, 60 LF
 - INSTALL 8' WIDE BITUMINOUS TRAIL

- STREET CONSTRUCTION NOTES**
- STATIONING REFERS TO STREET CENTERLINE.
 - ALL SPOT ELEVATIONS ARE TO GUTTER UNLESS OTHERWISE NOTED.
 - ALL DIMENSIONS ARE TO BACK OF CURB UNLESS OTHERWISE NOTED.
 - SEE GRADING PLAN FOR PROPOSED SPOT ELEVATIONS IN PRIVATE DRIVEWAYS.
 - TACK FACE OF EXISTING CURB PRIOR TO PAVING.
 - RELOCATE SIGNS AND UTILITIES AS REQUIRED.
 - STANDING WATER SHALL NOT BE ALLOWED WITHIN THE STREET SUBGRADE. CONTRACTOR SHALL PROVIDE TEMPORARY DRAINAGE OR PUMP OUT WATER FOUND IN THE SUBGRADE WITHIN 24 HOURS OF A RAIN EVENT.
 - ALL CASTINGS (MANHOLES AND VALVE BOXES) MUST BE ADJUSTED TO 1/2" BELOW THE FINISHED ASPHALT BASE COURSE ELEVATION BEFORE PAVING OF THE ASPHALT BASE. NO CUTS WILL BE ALLOWED IN THE NEW PAVEMENT TO ADJUST THE CASTINGS TO GRADE. ADJUSTMENTS TO MEET THE FINAL WEAR COURSE ELEVATION WILL BE ACCOMPLISHED USING GLUE IN STEEL ADJUSTMENT RINGS. THE CITY WILL IMPOSE A \$1,000 FINE TO THE DEVELOPER FOR EVERY PATCH LOCATION NEEDED IN THE BASE COURSE PAVEMENT.
 - ALL MAILBOXES SHALL BE CLUSTERED.



190TH LANE NW / FILLMORE STREET



Sambatek
www.sambatek.com
12800 Whitewater Drive, Suite 300
Minnetonka, MN 55343
763.476.6010 telephone
763.476.8532 facsimile
Engineering | Surveying | Planning | Environmental

Client
PAXMAR, LLC.

3495 NORTHDAL BLVD. NW
SUITE 210
COON RAPIDS, MN 55448

Project
**MISKE
MEADOWS
FOURTH
ADDITION**

Location
ELK RIVER, MN

Certification
I hereby certify that this plan, specification or report was prepared by me or under my direct supervision and that I am a duly licensed professional ENGINEER under the laws of the state of Minnesota.

Eric T. Luth
Eric T. Luth
Registration No. 50475 Date: 03/28/2018
If applicable, contact us for a wet signed copy of this plan which is available upon request at Sambatek's, Minnetonka, MN office.

Summary
Designed: NRH Drawn: NRH
Approved: ETL Initial Issue: 03/15/18
Phase: CONSTRUCTION DOCUMENTS

Revision History
No. Date By Submittal / Revision
A 04/18/18 ETL REVISE EAST TRAIL GRADES

Sheet Title
**FINAL STREET
PLAN - 190TH LN
NW & FILLMORE
ST**
Sheet No. Revision
C8.01 A
Project No. 20460.05