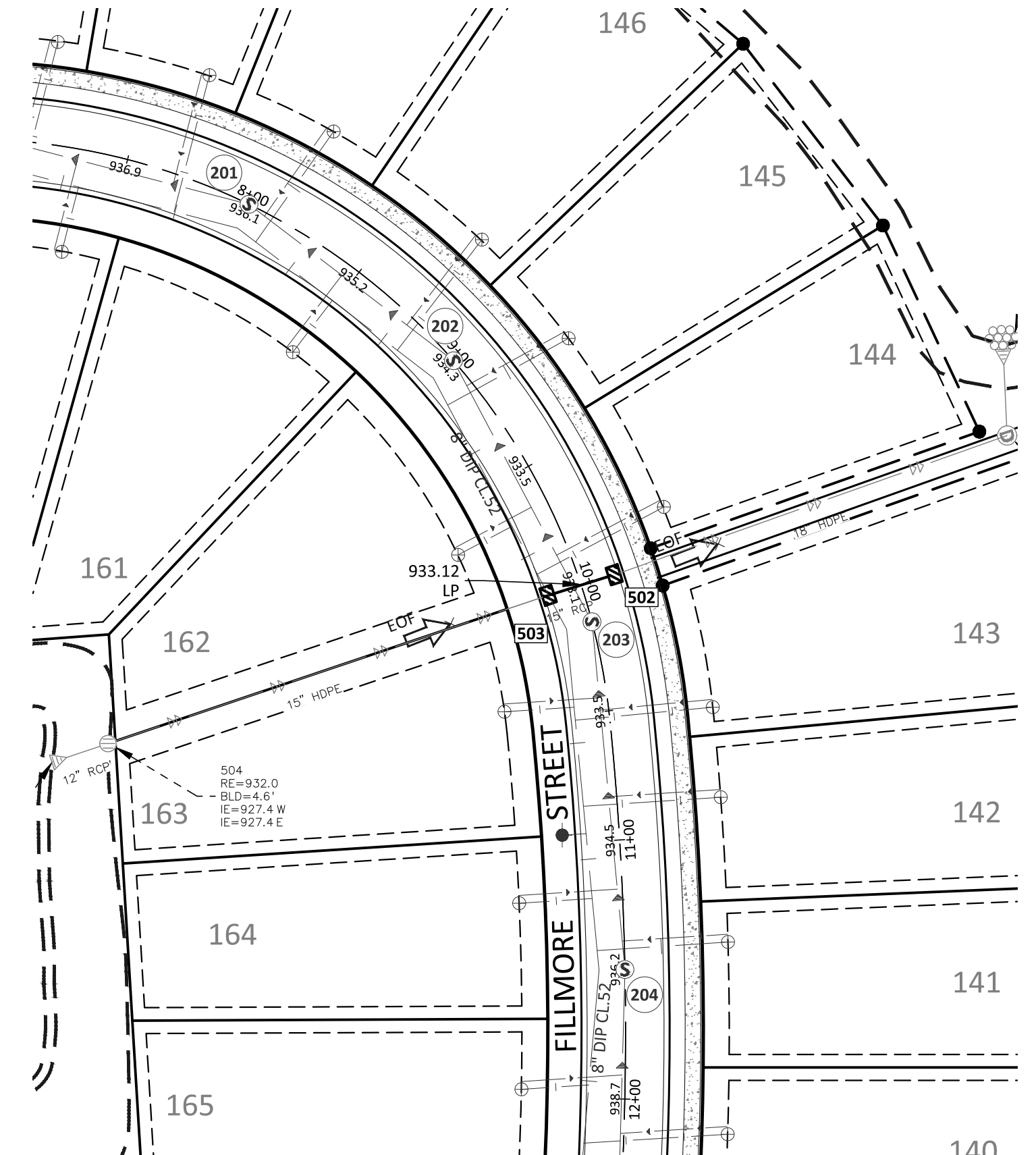


STORM
1500 & 3500



Know what's below.
Call before you dig.

STR. #	TYPE	DIA.	RIM	BLD	IE	Casting
502	CBMH	48"Ø	932.6	6.5	926.5	R-3067
503	CBMH	48"Ø	932.6	6.1	926.1	R-3067
1503	CBMH	48"Ø	928.8	6.8	922.0	R-3067
1508	CB	2'x3'	936.2	4.0	932.2	R-3067-V
3500	CBMH	48"Ø	933.4	6.0	927.4	R-3067-V
3501	SSMH	48"Ø	939.0	8.9	930.2	R-1733
3502	CBMH	48"Ø	936.8	4.8	932.0	R-3067
3503	CBMH	48"Ø	936.8	4.3	932.5	R-3067
3504	CBMH	27"Ø	936.0	3.0	933.0	R-4342
EX-1501	CBMH	60"Ø	934.9	17.6	920.8	R-3067-V
EX 1502	CBMH	72"Ø	928.8	6.9	921.8	R-3067



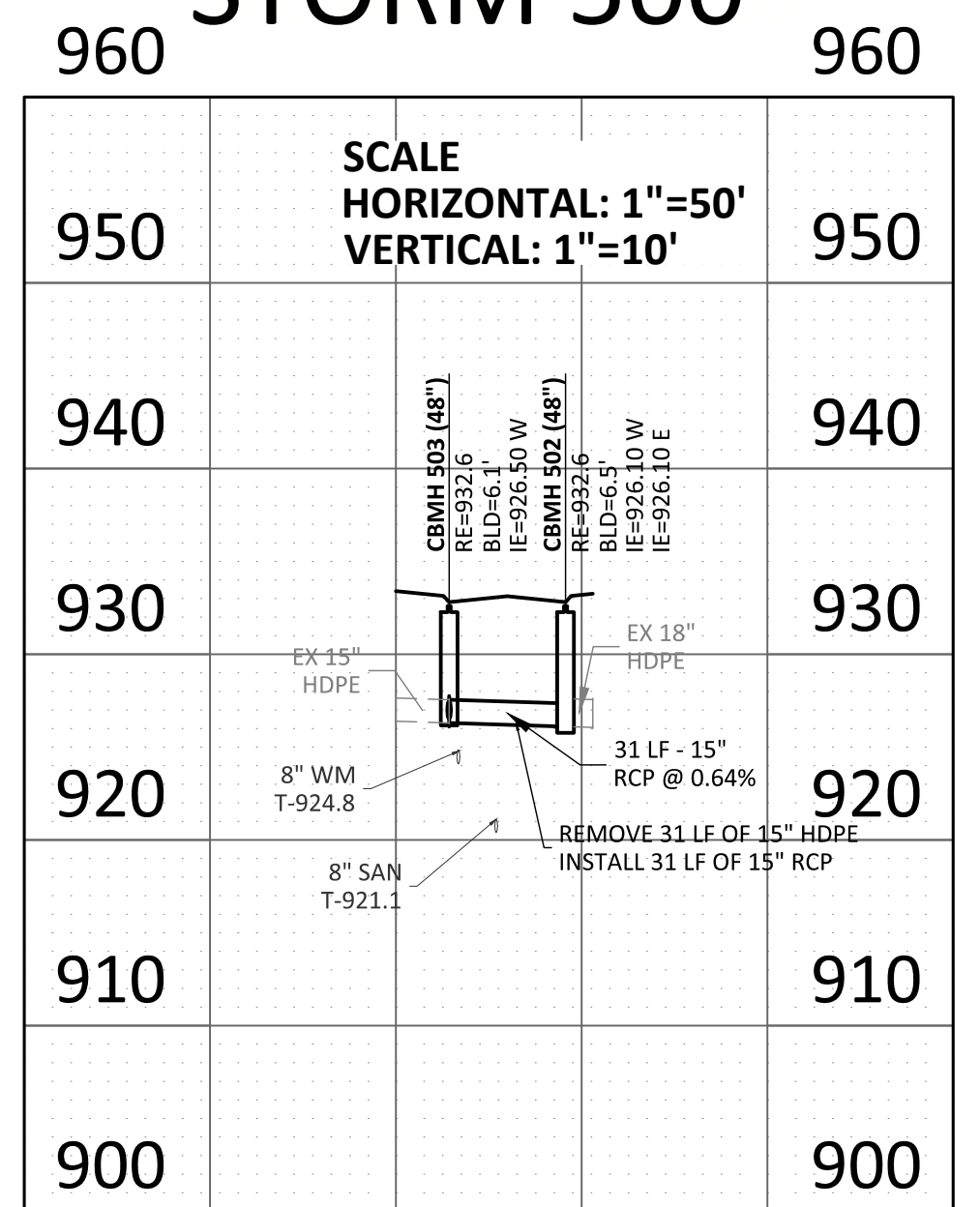
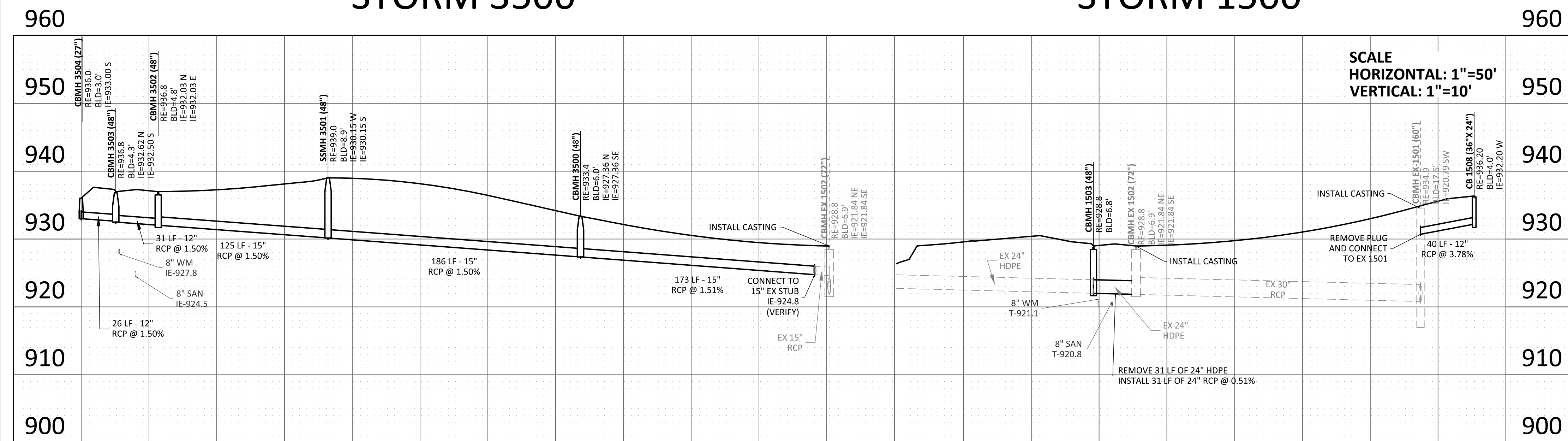
STORM 500



STORM 3500

STORM 1500

STORM 500



Client
PAXMAR, LLC.

3495 NORTHDAL BLVD. NW
SUITE 210
COON RAPIDS, MN 55448

Project
MISKE
MEADOWS
FOURTH
ADDITION

Location
ELK RIVER, MN

Certification
I hereby certify that this plan, specification or report was prepared by me or under my direct supervision and that I am a duly licensed professional ENGINEER under the laws of the state of Minnesota.

Eric T. Luth
Eric T. Luth
Registration No. 50475 Date: 03/28/2018

Summary
Designed: NRH Drawn: NRH
Approved: ETL Initial Issue: 03/15/18
Phase: CONSTRUCTION DOCUMENTS

Revision History
No. Date By Submittal / Revision
A 04/18/18 ETL REVISE EAST TRAIL GRADES

Sheet Title
STORM SEWER
PLAN & PROFILE
(3500, 1500, &
500)
Sheet No. Revision
C7.02 A

Project No. 20460.05