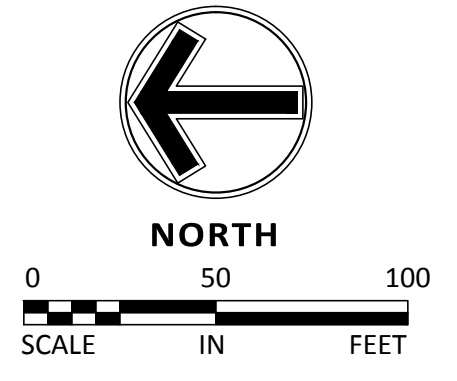


LEGEND

CURB & GUTTER
 STORM SEWER
 SANITARY SEWER
 WATERMAIN
 PROPERTY LINE
 EASEMENT
 SANITARY SERVICE
 WATER SERVICE

PROPOSED EXISTING FUTURE



Sambatek
 www.sambatek.com
 12800 Whitewater Drive, Suite 300
 Minnetonka, MN 55343
 763.476.6010 telephone
 763.476.8532 facsimile

Engineering | Surveying | Planning | Environmental

Client
PAXMAR, LLC.

3495 NORTHDAL BLVD. NW
 SUITE 210
 COON RAPIDS, MN 55448

Project
**MISKE
 MEADOWS
 FOURTH
 ADDITION**

Location
ELK RIVER, MN

Certification
 I hereby certify that this plan, specification or report was prepared by me or under my direct supervision and that I am a duly licensed professional ENGINEER under the laws of the state of Minnesota.

Eric T. Luth
 Eric T. Luth
 Registration No. 50475 Date: 03/28/2018

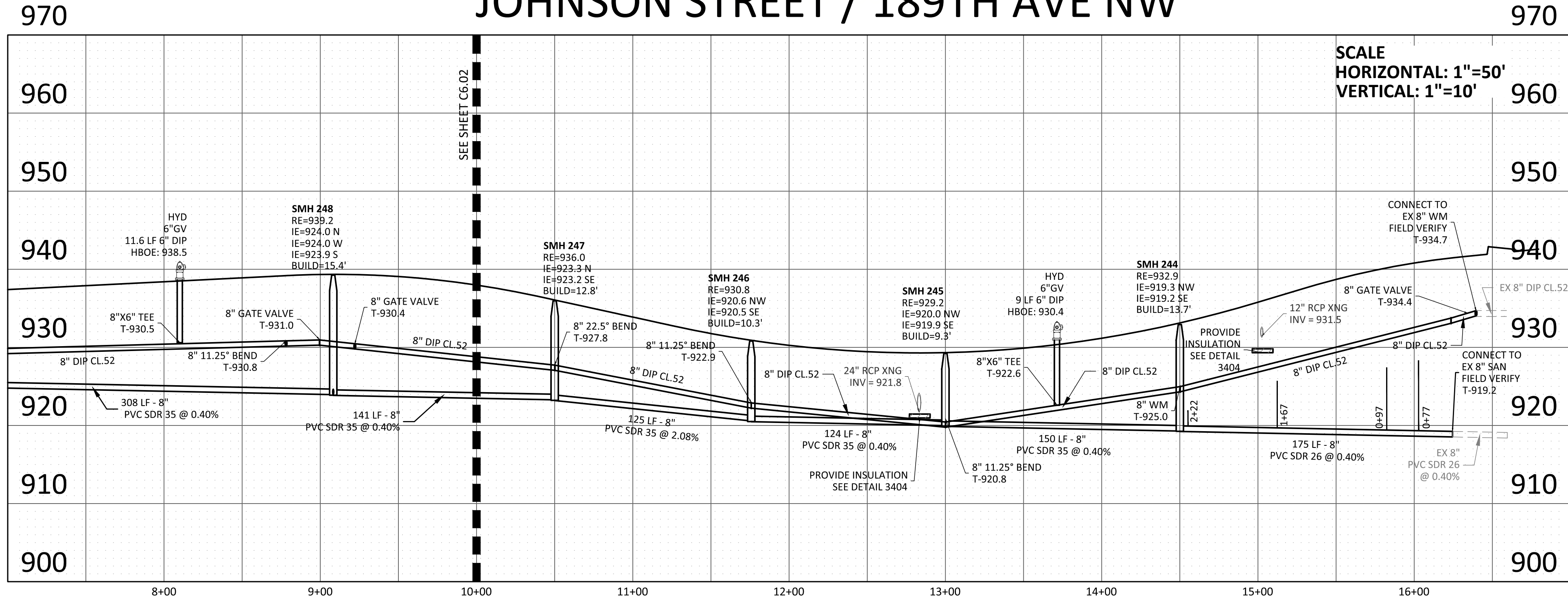
If applicable, contact us for a wet signed copy of this plan which is available upon request at Sambatek's, Minnetonka, MN office.

Summary
 Designed: NRH Drawn: NRH
 Approved: ETL Initial Issue: 03/15/18
 Phase: CONSTRUCTION DOCUMENTS

Revision History

No.	Date	By	Submittal / Revision
03/28/18	MMQ		CONSTRUCTION DOCS
A	04/18/18	ETL	REVISE EAST TRAIL GRADES

JOHNSON STREET / 189TH AVE NW



SCALE
HORIZONTAL: 1"=50'
VERTICAL: 1"=10'

Sheet Title
**FINAL SANITARY
 SEWER &
 WATERMAIN PLAN -
 JOHNSON ST (CONT.)**

Sheet No. Revision
C6.03 A

Project No. 20460.05