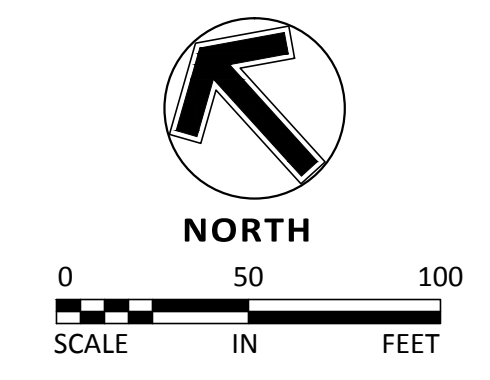


**LEGEND**

	PROPOSED	EXISTING	FUTURE
CURB & GUTTER			
STORM SEWER			
SANITARY SEWER			
WATERMAIN			
PROPERTY LINE			
EASEMENT			
SANITARY SERVICE			
WATER SERVICE			



**Sambatek**  
www.sambatek.com  
12800 Whitewater Drive, Suite 300  
Minnetonka, MN 55343  
763.476.6010 telephone  
763.476.8532 facsimile

Engineering | Surveying | Planning | Environmental

**Client**  
**PAXMAR, LLC.**

3495 NORTHDAL BLVD. NW  
SUITE 210  
COON RAPIDS, MN 55448

**Project**  
**MISKE  
MEADOWS  
FOURTH  
ADDITION**

**Location**  
**ELK RIVER, MN**

**Certification**

I hereby certify that this plan, specification or report was prepared by me or under my direct supervision and that I am a duly licensed professional ENGINEER under the laws of the state of Minnesota.

*Eric T. Luth*  
Eric T. Luth  
Registration No. 50475 Date: 03/28/2018

If applicable, contact us for a wet signed copy of this plan which is available upon request at Sambatek's, Minnetonka, MN office.

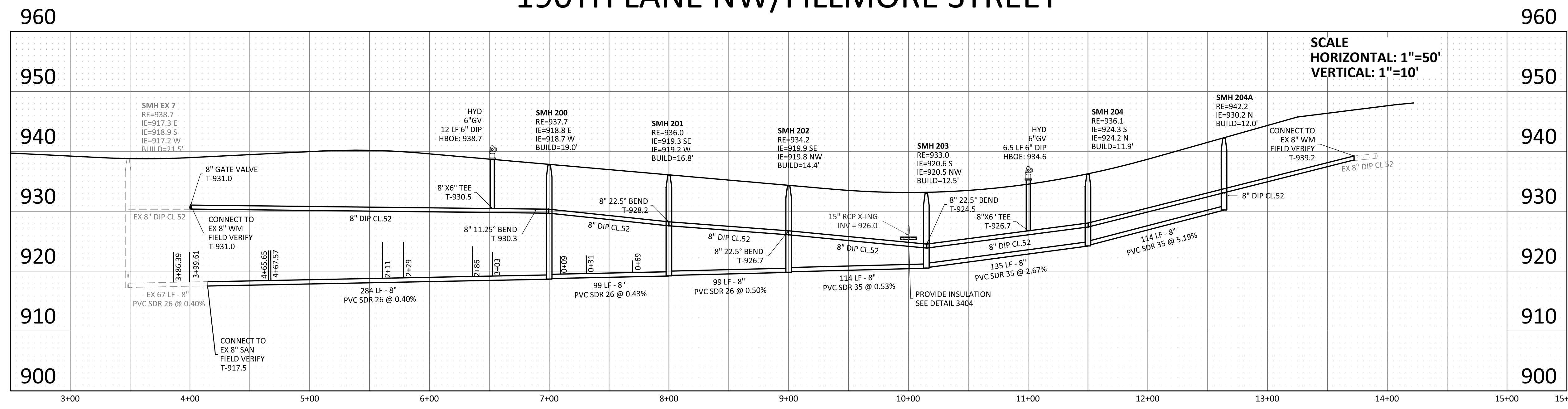
**Summary**

Designed: NRH Drawn: NRH  
Approved: ETL Initial Issue: 03/15/18  
Phase: CONSTRUCTION DOCUMENTS

**Revision History**

No.	Date	By	Submittal / Revision
03/28/18	MMQ		CONSTRUCTION DOCS
A	04/18/18	ETL	REVISE EAST TRAIL GRADES

**190TH LANE NW/FILLMORE STREET**



**SCALE**  
**HORIZONTAL: 1"=50'**  
**VERTICAL: 1"=10'**

**Sheet Title**  
**FINAL SANITARY  
SEWER &  
WATERMAIN PLAN -  
190TH ST  
NW-FILLMORE ST**

**Sheet No. Revision**  
**C6.01 A**

**Project No.** 20460.05